

Runway Use Report

Chicago O'Hare International Airport

Period: January 2011

Time of Day: All hours



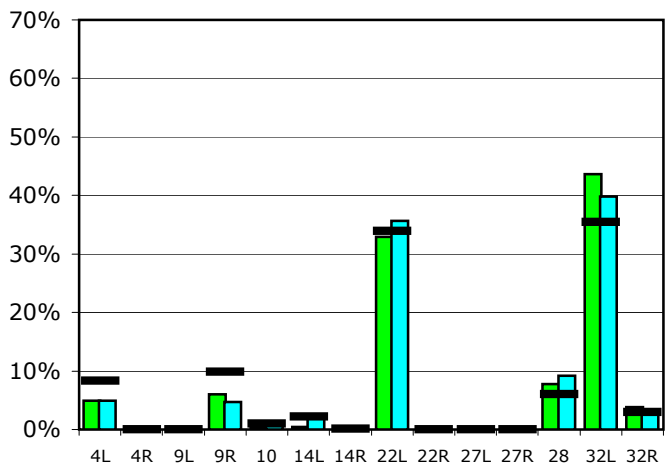
Runway Use (All hours)

Source: Airport Noise Management System (ANMS)

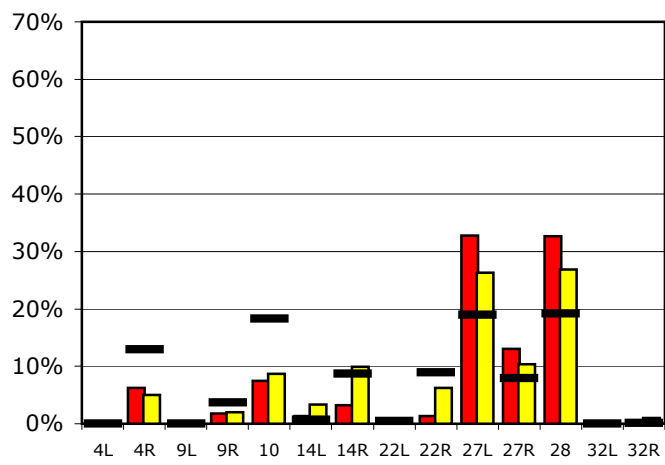
Runway Utilization

	4L	4R	9L	9R	10	14L	14R	22L	22R	27L	27R	28	32L	32R
Average Daily Departures														
January 2011	56	0	0	67	4	5	0	370	0	0	0	88	491	43
December 2010	55	0	0	53	8	27	0	401	0	0	0	103	447	29
12 Month Avg.	94	0	0	111	12	25	1	381	0	1	0	68	399	34
Average Daily Arrivals														
January 2011	0	69	0	20	83	14	36	0	14	361	144	360	0	0
December 2010	0	55	1	22	96	37	109	2	69	290	114	295	0	11
12 Month Avg.	0	152	0	43	215	8	103	5	105	223	93	225	0	1

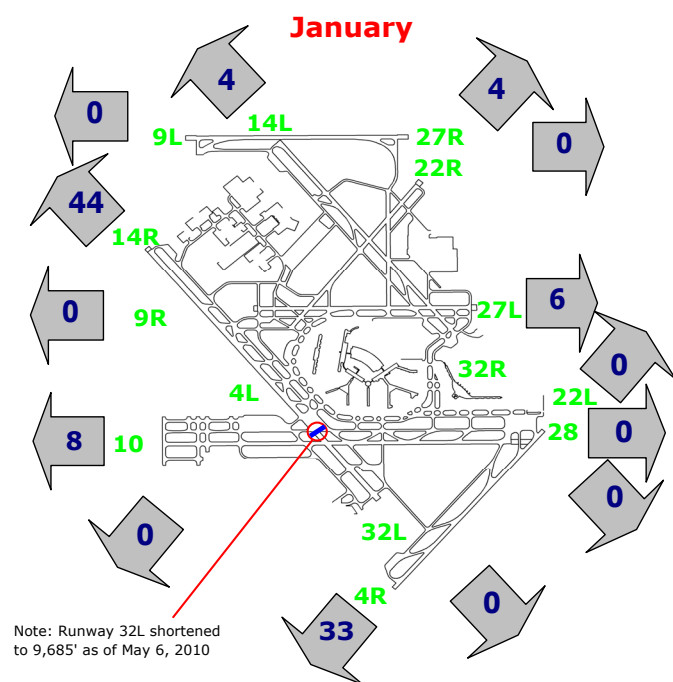
Departures (All hours)



Arrivals (All hours)



Percentage Departure Utilization



Percentage Arrival Utilization

