

# Runway Use Report

Chicago O'Hare International Airport

Period: January 2011

Time of Day: 10:00 p.m. to 7:00 a.m.



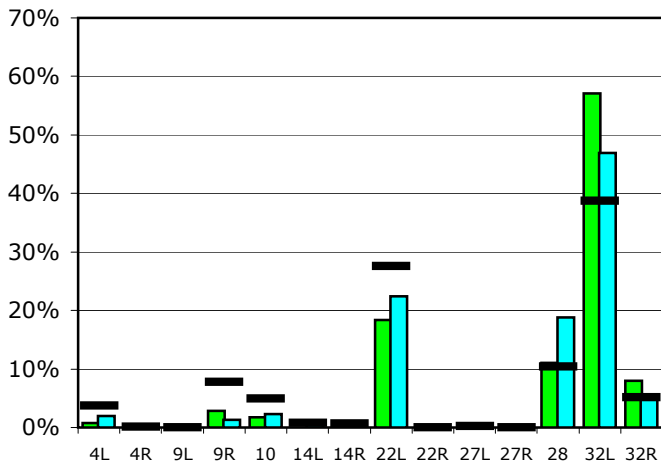
## Runway Use (10 p.m. to 7 a.m.)

Source: Airport Noise Management System (ANMS)

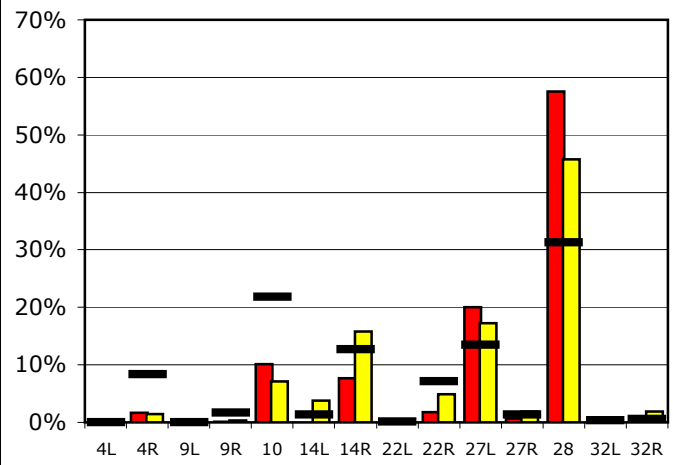
### Runway Utilization

	4L	4R	9L	9R	10	14L	14R	22L	22R	27L	27R	28	32L	32R
<b>Average Daily Departures</b>														
January 2011	1	0	0	2	2	0	0	16	0	0	0	10	49	7
December 2010	2	0	0	1	2	1	0	23	0	0	0	19	47	5
12 Month Avg.	3	0	0	7	4	1	1	25	0	0	0	9	36	5
<b>Average Daily Arrivals</b>														
January 2011	0	2	0	0	10	0	8	0	2	20	1	57	0	0
December 2010	0	2	0	0	8	4	18	0	6	20	2	52	0	2
12 Month Avg.	0	10	0	2	26	2	15	0	8	16	2	37	0	1

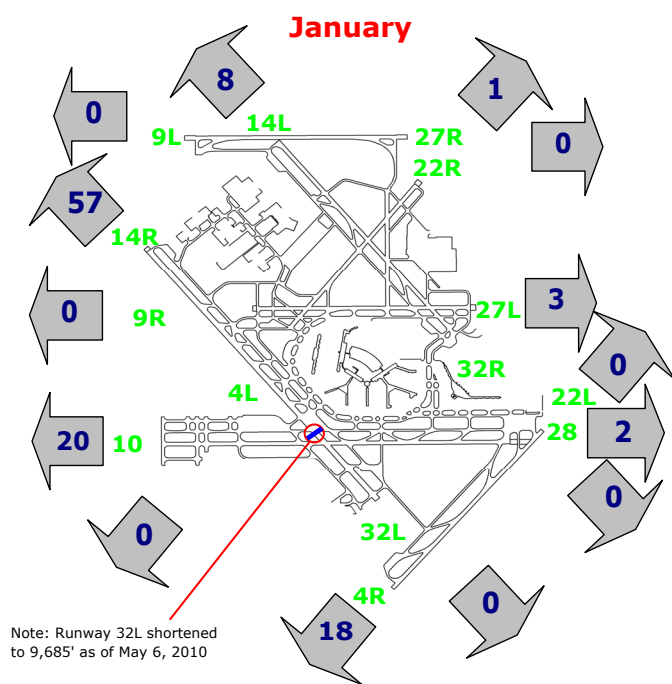
### Departures (10 p.m. to 7 a.m.)



### Arrivals (10 p.m. to 7 a.m.)



### Percentage Departure Utilization



### Percentage Arrival Utilization

