

Runway Use Report

Chicago O'Hare International Airport

Period: September 2009

Time of Day: All hours

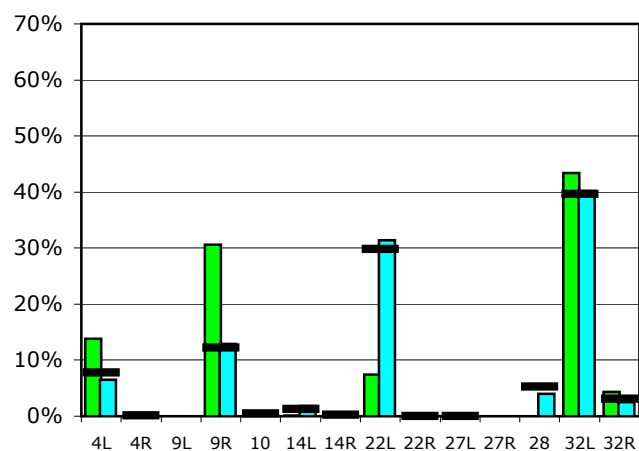


Runway Use (All hours)

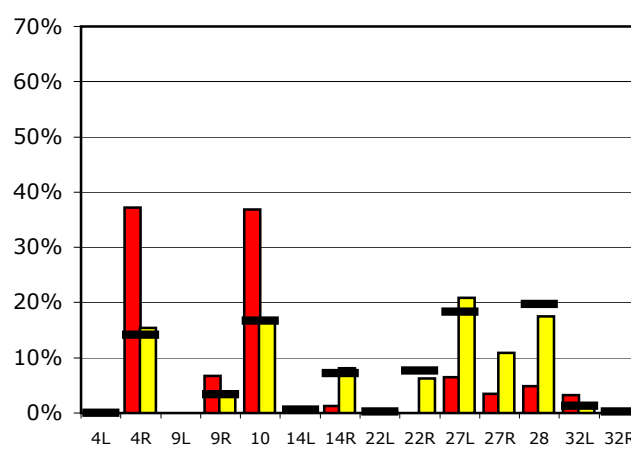
Source: Airport Noise Management System (ANMS)

		Runway Utilization ¹													
		4L	4R	9L	9R	10	14L	14R	22L	22R	27L	27R	28	32L	32R
Average Daily Departures															
September 2009		144	0	0	319	1	1	2	77	0	0	0	0	452	45
August 2009		71	0	0	140	1	20	6	342	0	0	0	43	437	28
12 Month Avg.		82	1	n/a	130	5	14	3	317	0	0	n/a	56	421	32
Average Daily Arrivals															
September 2009		0	419	0	75	414	0	14	0	0	73	39	55	36	0
August 2009		0	176	0	35	189	3	94	1	71	239	125	200	13	0
12 Month Avg.		0	158	n/a	38	187	7	80	3	85	205	n/a	220	14	2

Departures (All hours)

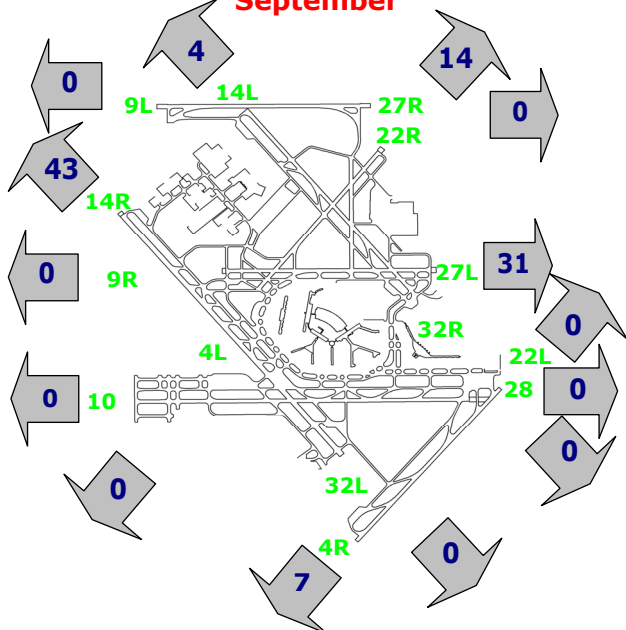


Arrivals (All hours)



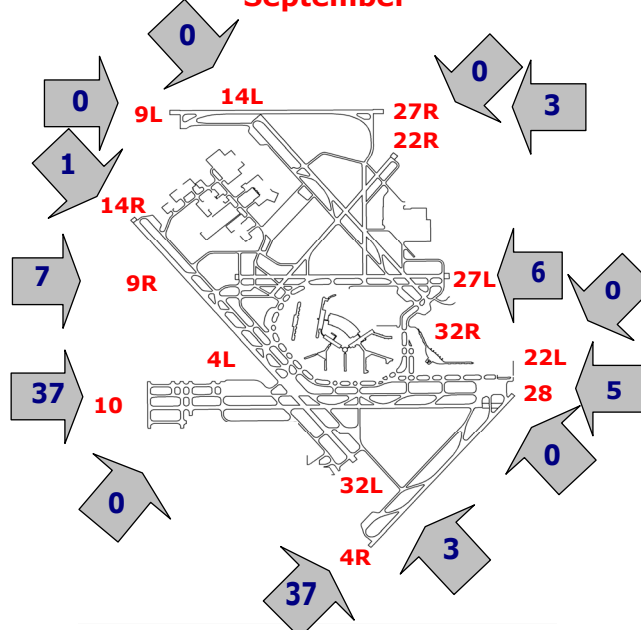
Percentage Departure Utilization

September



Percentage Arrival Utilization

September



¹ Runway 9L/27R was commissioned on November 20, 2008