

Runway Use Report

Chicago O'Hare International Airport
 Period: September 2008
 Time of Day: 10:00 p.m. to 7:00 a.m.



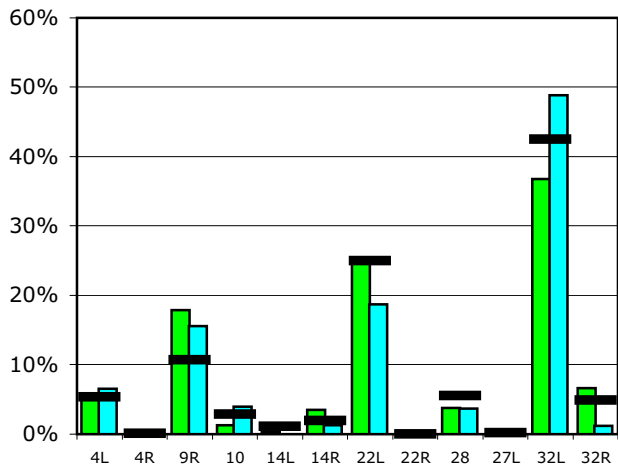
Runway Use (10 p.m. to 7 a.m.)

Source: Airport Noise Management System (ANMS)

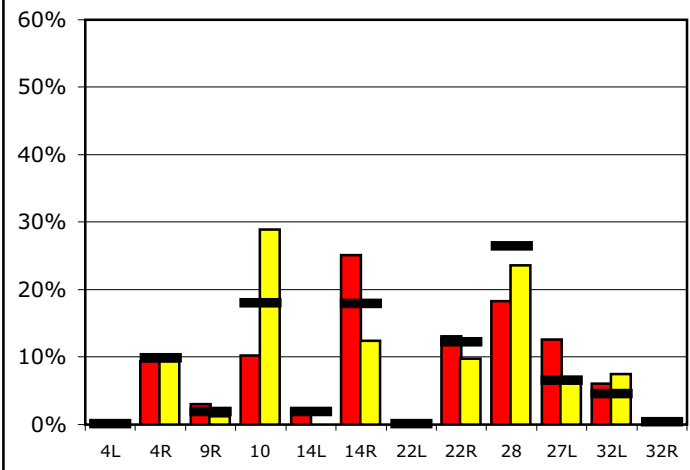
Runway Utilization

	4L	4R	9R	10	14L	14R	22L	22R	28	27L	32L	32R
Average Daily Departures												
September 2008	5	0	17	1	0	3	23	0	4	0	35	6
August 2008	8	0	19	5	0	2	23	0	4	0	59	1
12 Month Avg.	5	0	11	3	1	2	25	0	6	0	42	5
Average Daily Arrivals												
September 2008	0	12	4	13	2	31	0	16	22	16	8	0
August 2008	0	16	2	49	0	21	0	16	40	12	13	0
12 Month Avg.	0	13	2	23	2	23	0	16	34	8	6	1

Departures (10 p.m. to 7 a.m.)

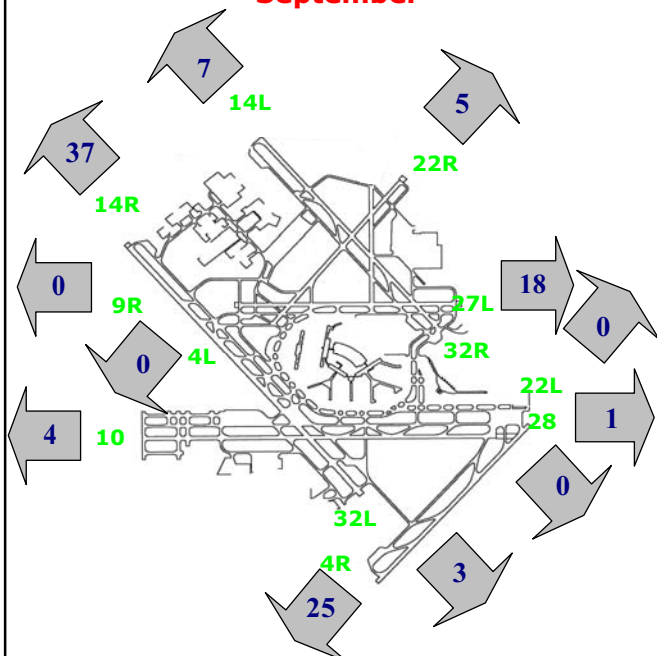


Arrivals (10 p.m. to 7 a.m.)



Percentage Departure Utilization

September



Percentage Arrival Utilization

September

