

Runway Use Report

Chicago O'Hare International Airport

Period: August 2010

Time of Day: 10:00 p.m. to 7:00 a.m.



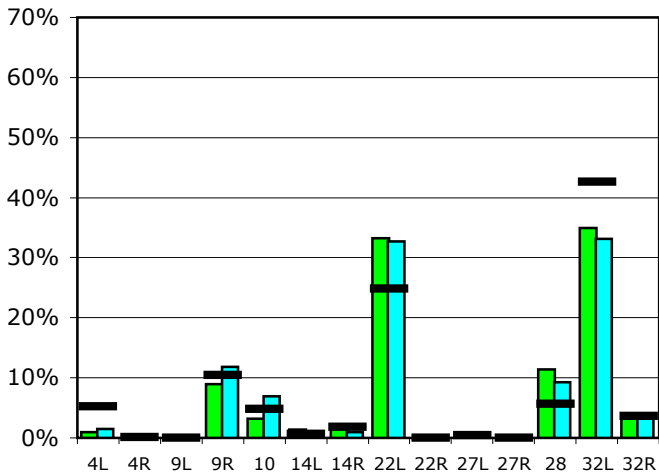
Runway Use (10 p.m. to 7 a.m.)

Source: Airport Noise Management System (ANMS)

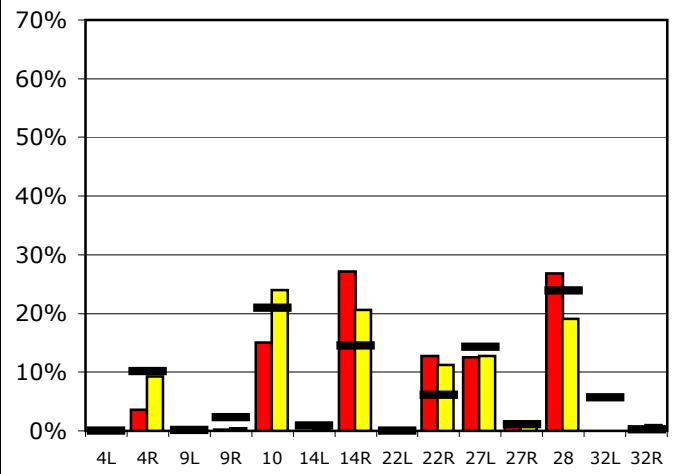
Runway Utilization

	4L	4R	9L	9R	10	14L	14R	22L	22R	27L	27R	28	32L	32R
Average Daily Departures														
August 2010	1	0	0	9	3	1	2	35	0	0	0	12	37	4
July 2010	1	0	0	9	5	0	1	25	0	0	0	7	25	3
12 Month Avg.	4	0	0	9	4	1	1	21	0	0	0	5	35	3
Average Daily Arrivals														
August 2010	0	5	0	0	20	0	37	0	17	17	2	37	0	0
July 2010	0	11	0	1	28	0	24	0	13	15	1	22	0	1
12 Month Avg.	0	12	0	3	24	1	17	0	7	16	1	27	6	0

Departures (10 p.m. to 7 a.m.)

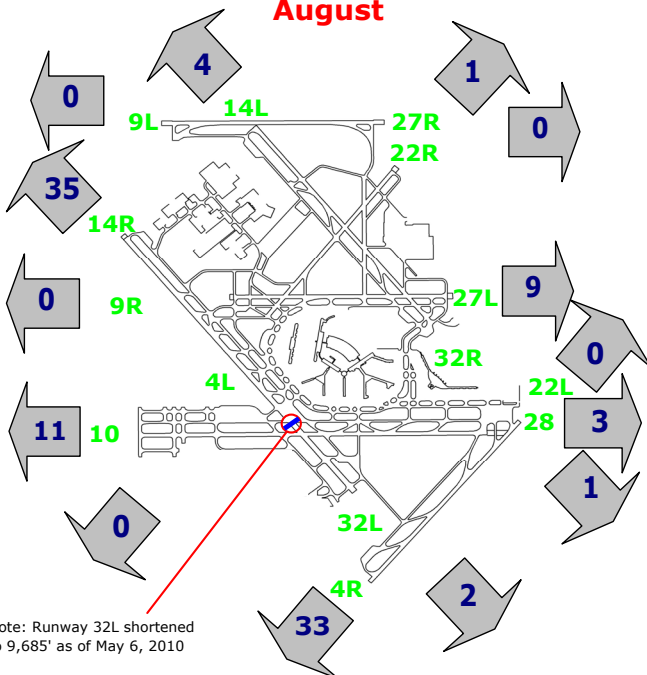


Arrivals (10 p.m. to 7 a.m.)



Percentage Departure Utilization

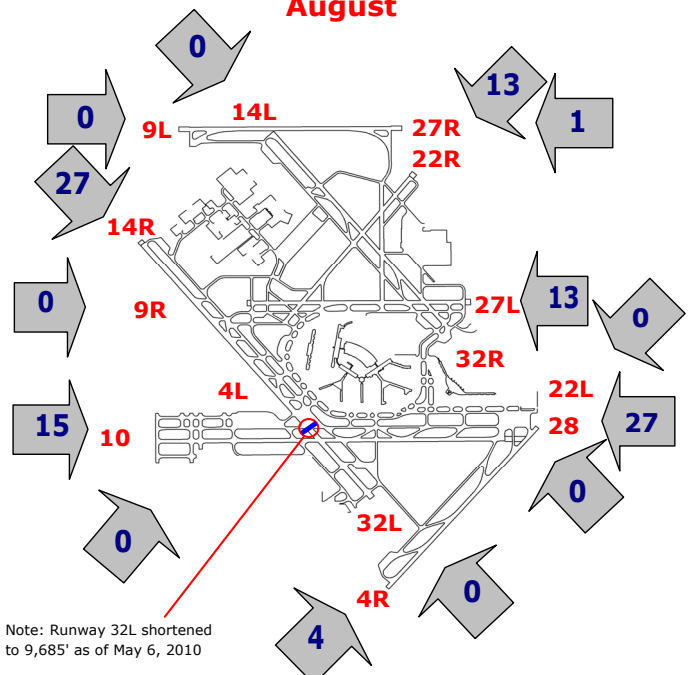
August



Note: Runway 32L shortened to 9,685' as of May 6, 2010

Percentage Arrival Utilization

August



Note: Runway 32L shortened to 9,685' as of May 6, 2010