

Runway Use Report

Chicago O'Hare International Airport

Period: August 2010

Time of Day: All hours



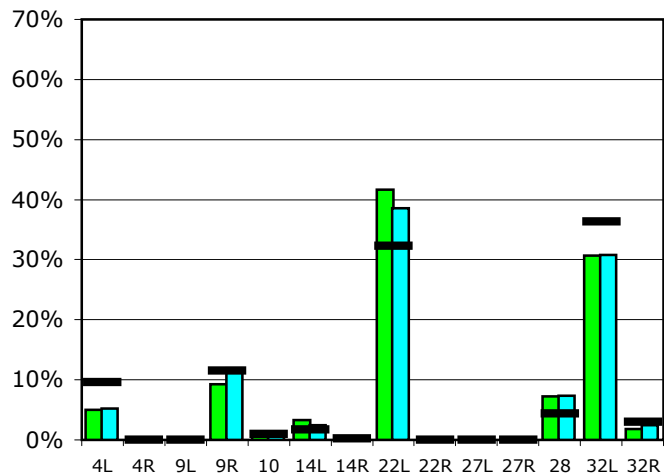
Runway Use (All hours)

Source: Airport Noise Management System (ANMS)

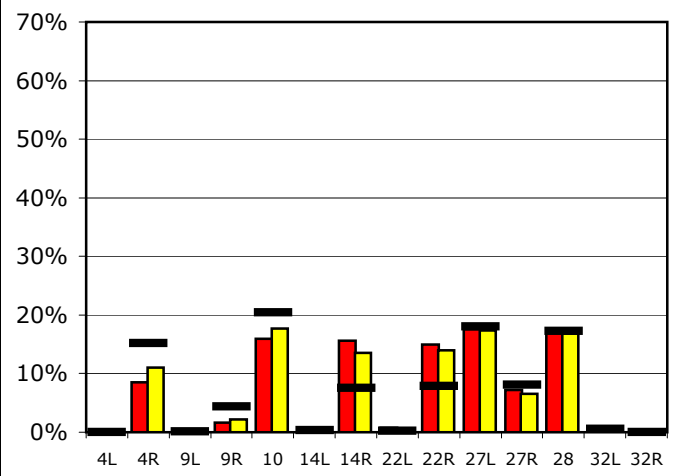
Runway Utilization

	4L	4R	9L	9R	10	14L	14R	22L	22R	27L	27R	28	32L	32R
Average Daily Departures														
August 2010	63	0	0	117	11	41	2	526	0	0	0	92	388	23
July 2010	66	0	0	149	14	31	1	483	0	0	0	91	385	30
12 Month Avg.	100	0	0	119	10	18	2	334	0	1	0	45	376	31
Average Daily Arrivals														
August 2010	0	107	0	20	200	3	195	10	188	221	90	219	0	0
July 2010	0	137	0	27	219	2	168	7	174	215	82	209	0	1
12 Month Avg.	0	174	1	50	234	4	87	3	90	206	92	197	6	0

Departures (All hours)

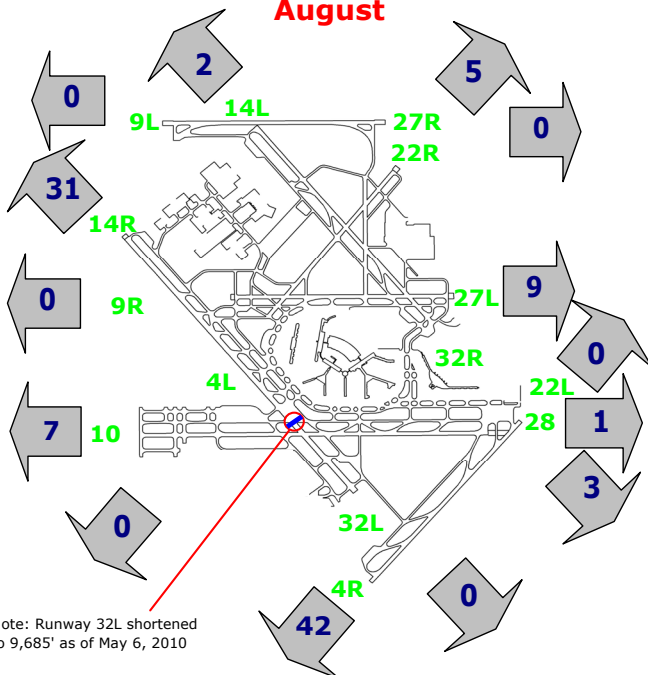


Arrivals (All hours)



Percentage Departure Utilization

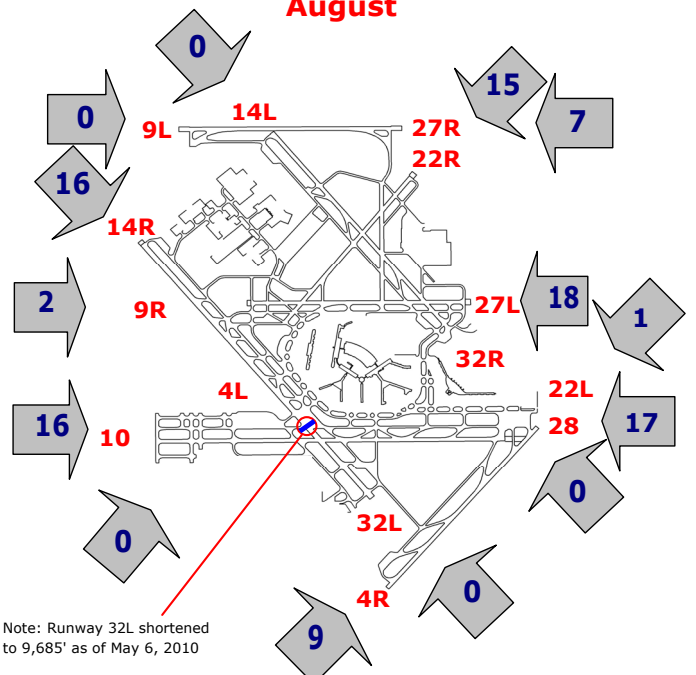
August



Note: Runway 32L shortened to 9,685' as of May 6, 2010

Percentage Arrival Utilization

August



Note: Runway 32L shortened to 9,685' as of May 6, 2010