

Runway Use Report

Chicago O'Hare International Airport

Period: October 2009

Time of Day: All hours

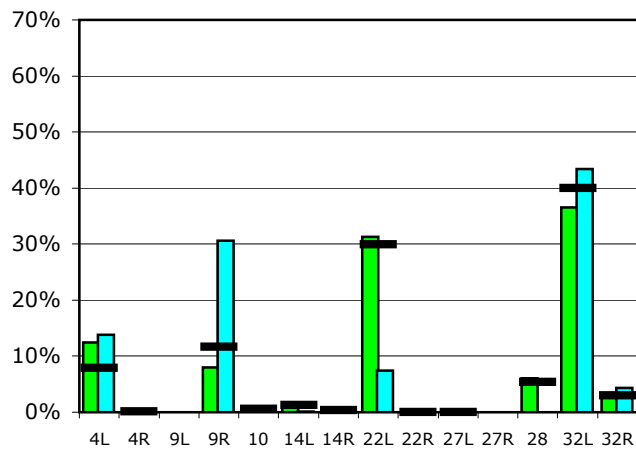


Runway Use (All hours)

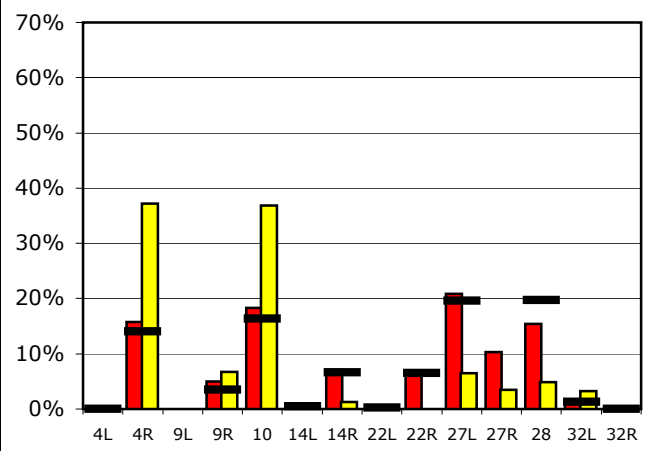
Source: Airport Noise Management System (ANMS)

| | | Runway Utilization ¹ | | | | | | | | | | | | | |
|---------------------------------|---------------------------------------|---------------------------------|-----|-----|-----|-----|-----|-----|-----|-----|-----|-----|-----|-----|-----|
| | | 4L | 4R | 9L | 9R | 10 | 14L | 14R | 22L | 22R | 27L | 27R | 28 | 32L | 32R |
| Average Daily Departures | | | | | | | | | | | | | | | |
| October 2009 | ■ | 118 | 0 | 0 | 76 | 9 | 11 | 6 | 297 | 0 | 1 | 0 | 58 | 348 | 27 |
| September 2009 | ■ | 144 | 0 | 0 | 319 | 1 | 1 | 2 | 77 | 0 | 0 | 0 | 0 | 452 | 45 |
| 12 Month Avg. | ■ | 82 | 1 | n/a | 121 | 6 | 13 | 3 | 310 | 0 | 0 | n/a | 56 | 415 | 31 |
| Average Daily Arrivals | | | | | | | | | | | | | | | |
| October 2009 | ■ | 0 | 177 | 0 | 56 | 205 | 2 | 79 | 1 | 67 | 233 | 116 | 173 | 10 | 0 |
| September 2009 | ■ | 0 | 419 | 0 | 75 | 414 | 0 | 14 | 0 | 73 | 39 | 55 | 36 | 0 | 0 |
| 12 Month Avg. | ■ | 0 | 154 | n/a | 39 | 180 | 5 | 73 | 3 | 71 | 216 | n/a | 217 | 14 | 1 |

Departures (All hours)

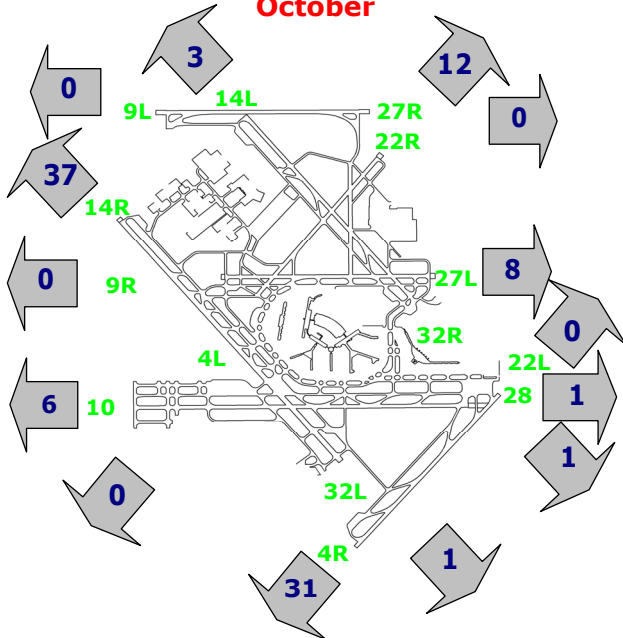


Arrivals (All hours)



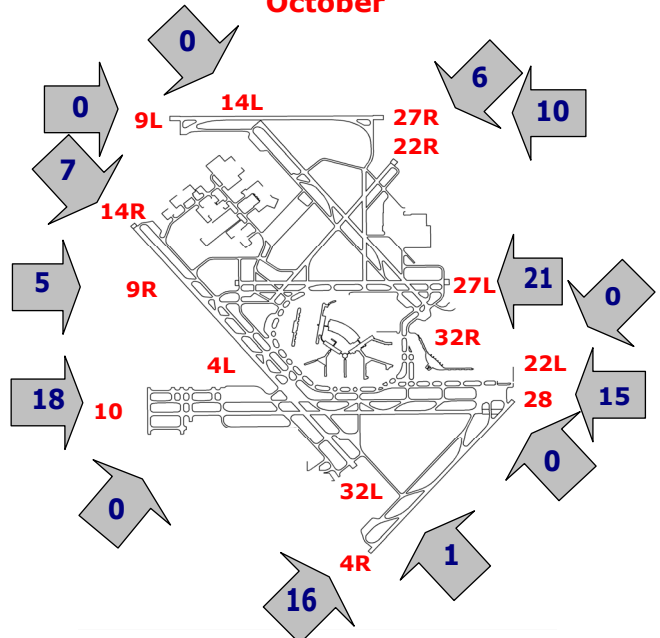
Percentage Departure Utilization

October



Percentage Arrival Utilization

October



¹ Runway 9L/27R was commissioned on November 20, 2008