

Runway Use Report

Chicago O'Hare International Airport

Period: October 2009

Time of Day: 10:00 p.m. to 7:00 a.m.

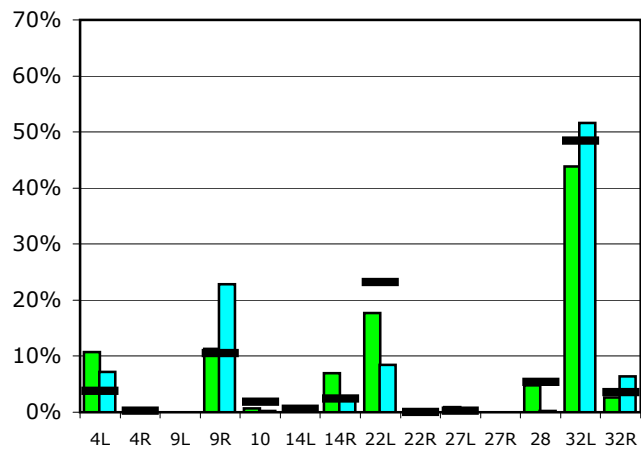


Runway Use (10 p.m. to 7 a.m.)

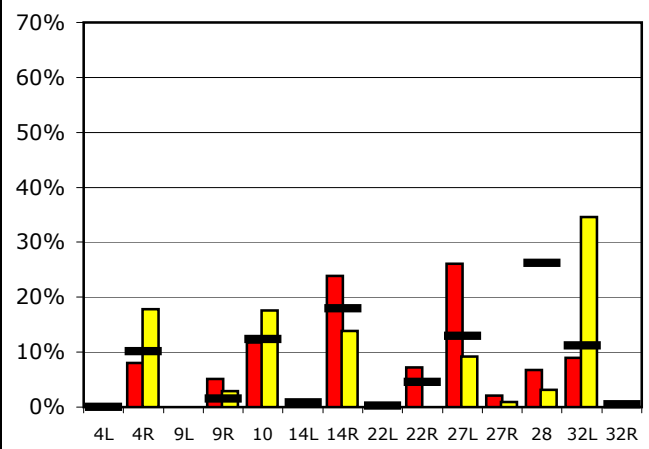
Source: Airport Noise Management System (ANMS)

		Runway Utilization ¹													
		4L	4R	9L	9R	10	14L	14R	22L	22R	27L	27R	28	32L	32R
Average Daily Departures															
October 2009		8	0	0	8	1	0	5	13	0	1	0	3	32	2
September 2009		5	0	0	17	0	0	2	6	0	0	0	0	38	5
12 Month Avg.		3	0	n/a	9	2	0	2	20	0	0	n/a	5	42	3
Average Daily Arrivals															
October 2009		0	9	0	6	13	0	27	0	8	29	2	8	10	0
September 2009		0	18	0	3	18	0	14	0	0	10	1	3	36	0
12 Month Avg.		0	12	n/a	2	14	1	21	0	5	15	n/a	30	13	1

Departures (10 p.m. to 7 a.m.)

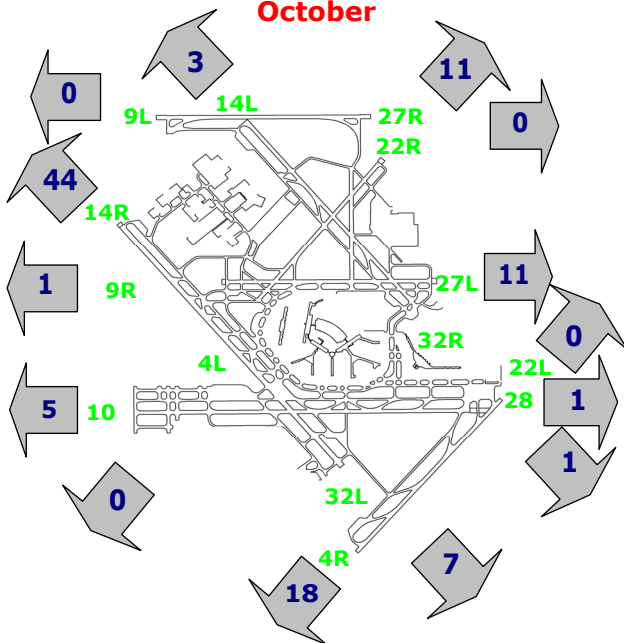


Arrivals (10 p.m. to 7 a.m.)



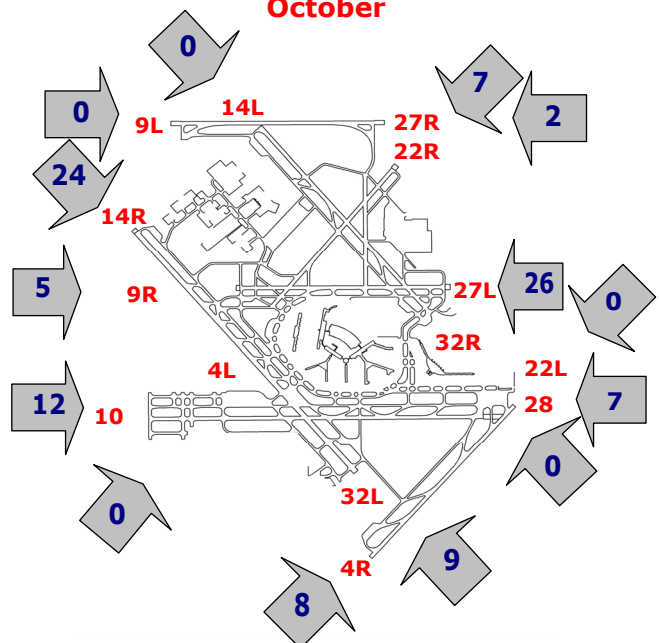
Percentage Departure Utilization

October



Percentage Arrival Utilization

October



¹ Runway 9L/27R was commissioned on November 20, 2008