

Runway Use Report

Chicago O'Hare International Airport

Period: September 2010

Time of Day: All hours



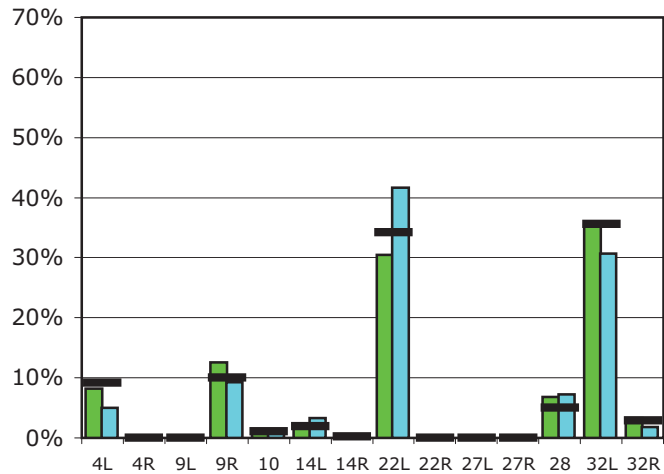
Runway Use (All hours)

Source: Airport Noise Management System (ANMS)

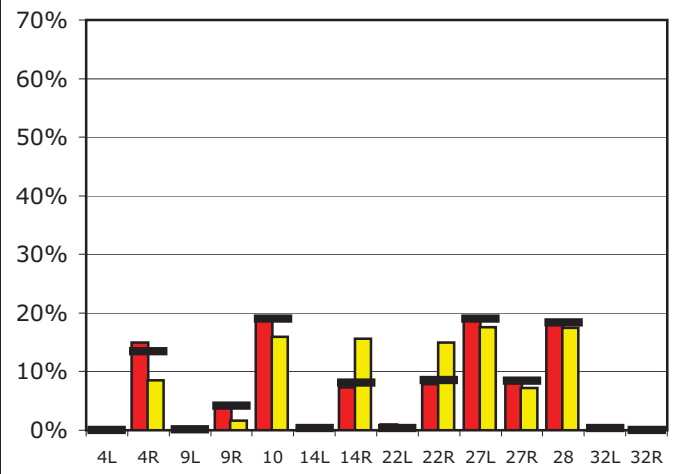
Runway Utilization

	4L	4R	9L	9R	10	14L	14R	22L	22R	27L	27R	28	32L	32R
Average Daily Departures														
September 2010	101	0	1	156	10	25	1	376	0	0	0	84	439	41
August 2010	63	0	0	117	11	41	2	526	0	0	0	92	388	23
12 Month Avg.	96	0	0	105	11	20	2	359	0	1	0	52	375	30
Average Daily Arrivals														
September 2010	0	182	0	48	236	2	90	6	96	232	99	228	0	0
August 2010	0	107	0	20	200	3	195	10	188	221	90	219	0	0
12 Month Avg.	0	154	1	47	219	4	93	3	98	219	97	211	3	0

Departures (All hours)

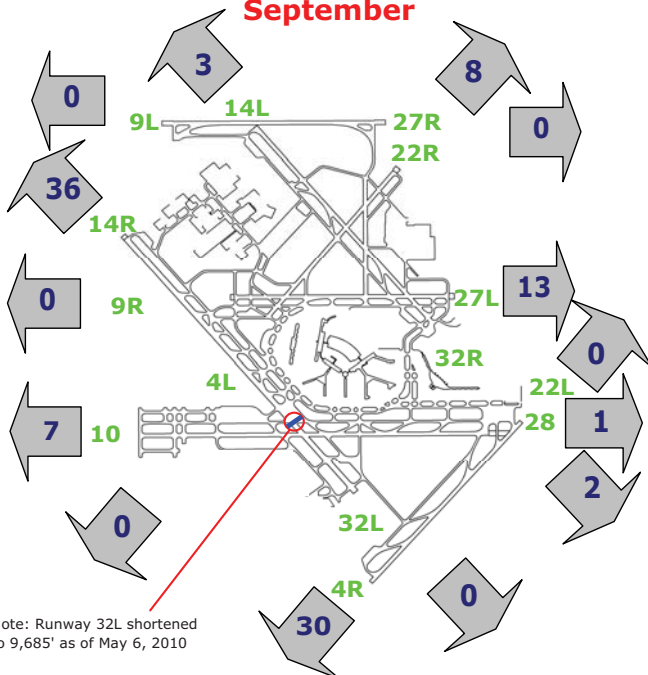


Arrivals (All hours)



Percentage Departure Utilization

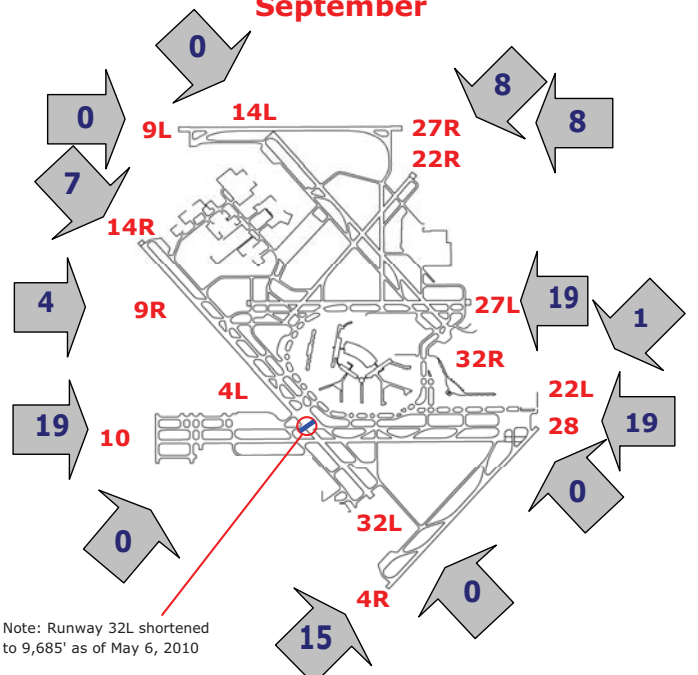
September



Note: Runway 32L shortened to 9,685' as of May 6, 2010

Percentage Arrival Utilization

September



Note: Runway 32L shortened to 9,685' as of May 6, 2010