

# Runway Use Report

Chicago O'Hare International Airport

Period: September 2010

Time of Day: 10:00 p.m. to 7:00 a.m.



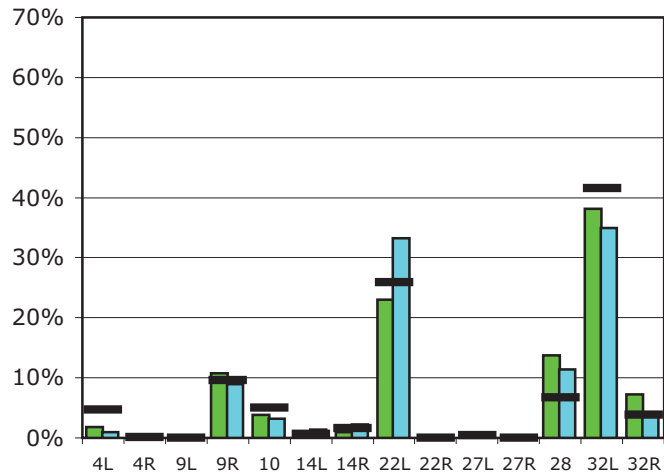
## Runway Use (10 p.m. to 7 a.m.)

Source: Airport Noise Management System (ANMS)

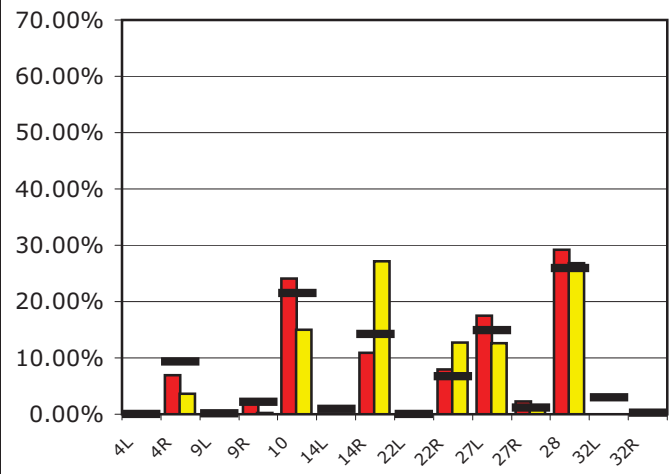
### Runway Utilization

	4L	4R	9L	9R	10	14L	14R	22L	22R	27L	27R	28	32L	32R
<b>Average Daily Departures</b>														
September 2010	2	0	0	10	3	0	1	21	0	0	0	12	35	7
August 2010	1	0	0	9	3	1	2	35	0	0	0	12	37	4
12 Month Avg.	4	0	0	8	4	1	1	22	0	0	0	6	35	3
<b>Average Daily Arrivals</b>														
September 2010	0	8	0	2	29	0	13	0	9	21	3	35	0	0
August 2010	0	5	0	0	20	0	37	0	17	17	2	37	0	0
12 Month Avg.	0	11	0	2	25	1	16	0	8	17	1	30	3	0

## Departures (10 p.m. to 7 a.m.)

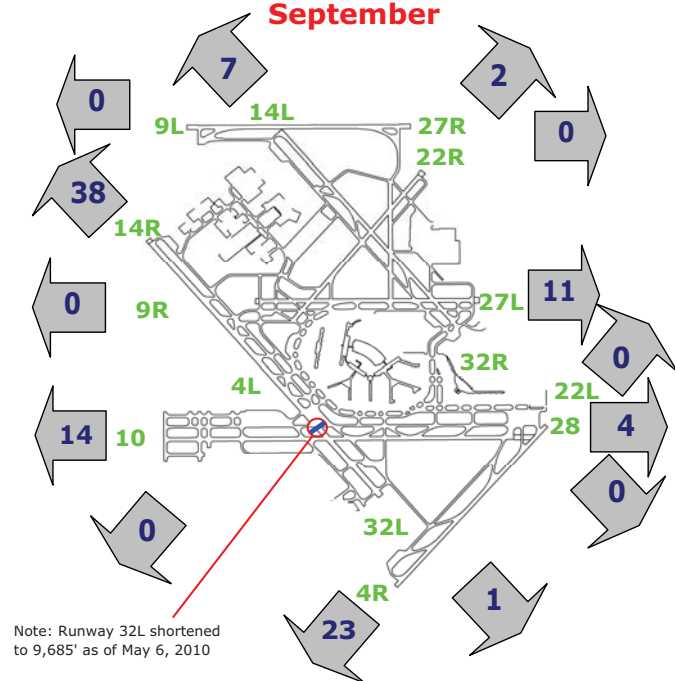


## Arrivals (10 p.m. to 7 a.m.)



## Percentage Departure Utilization

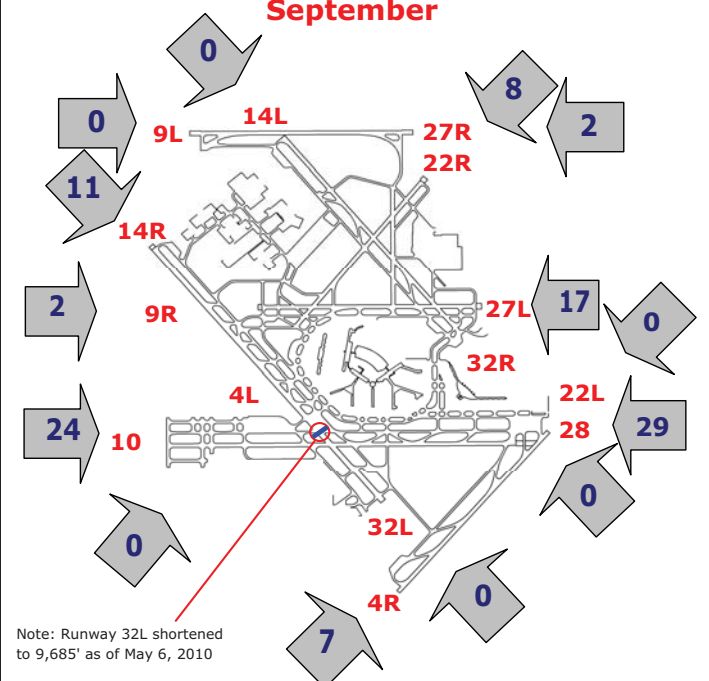
September



Note: Runway 32L shortened to 9,685' as of May 6, 2010

## Percentage Arrival Utilization

September



Note: Runway 32L shortened to 9,685' as of May 6, 2010