

Runway Use Report

Chicago O'Hare International Airport

Period: October 2010

Time of Day: All hours



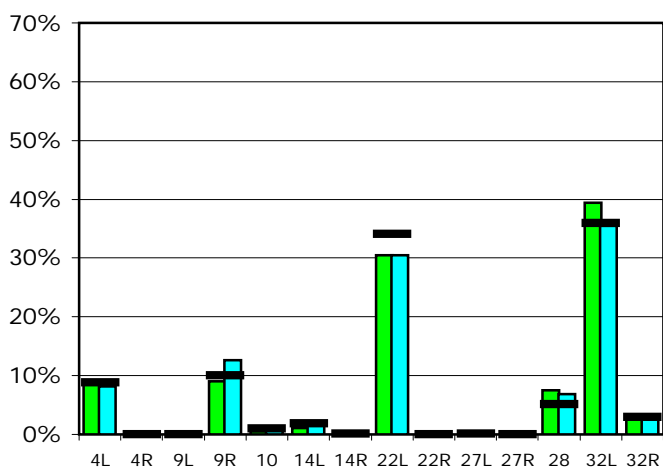
Runway Use (All hours)

Source: Airport Noise Management System (ANMS)

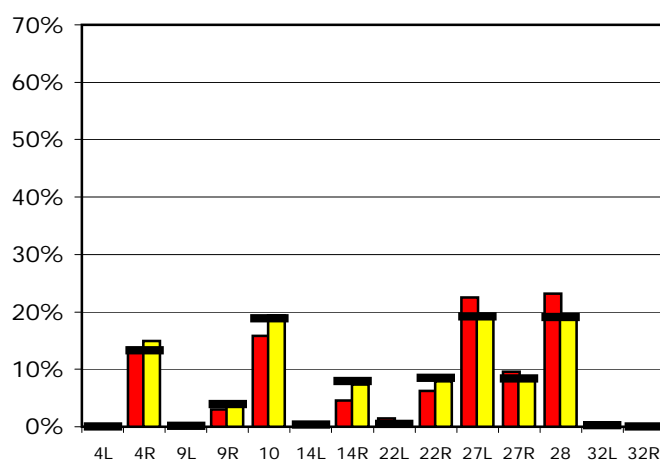
Runway Utilization

	4L	4R	9L	9R	10	14L	14R	22L	22R	27L	27R	28	32L	32R
Average Daily Departures														
October 2010	104	0	0	110	7	14	0	373	0	3	0	91	482	40
September 2010	101	0	1	156	10	25	1	376	0	0	0	84	439	41
12 Month Avg.	95	0	0	108	11	20	1	366	0	1	0	55	386	31
Average Daily Arrivals														
October 2010	0	165	0	36	191	0	56	18	76	272	116	280	0	0
September 2010	0	182	0	48	236	2	90	6	96	232	99	228	0	0
12 Month Avg.	0	153	1	46	218	4	91	5	99	222	97	220	3	0

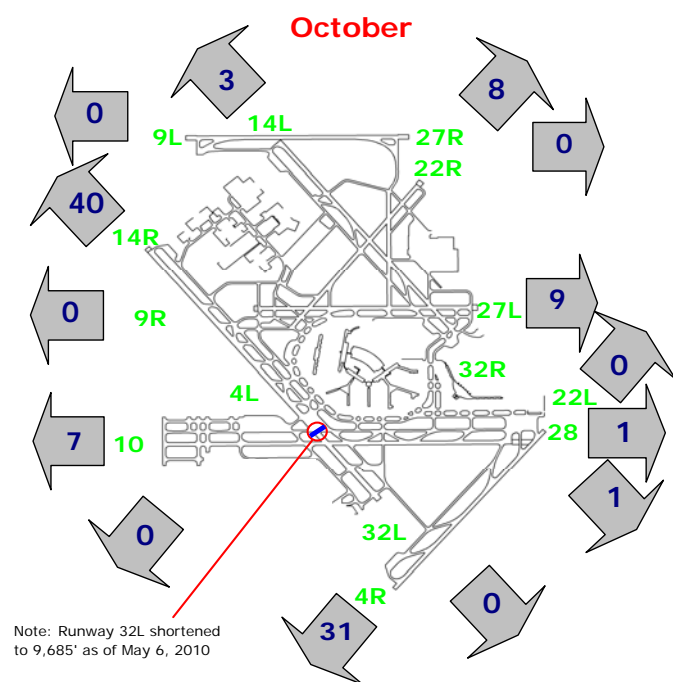
Departures (All hours)



Arrivals (All hours)



Percentage Departure Utilization



Percentage Arrival Utilization

