

# Runway Use Report

Chicago O'Hare International Airport

Period: October 2010

Time of Day: 10:00 p.m. to 7:00 a.m.



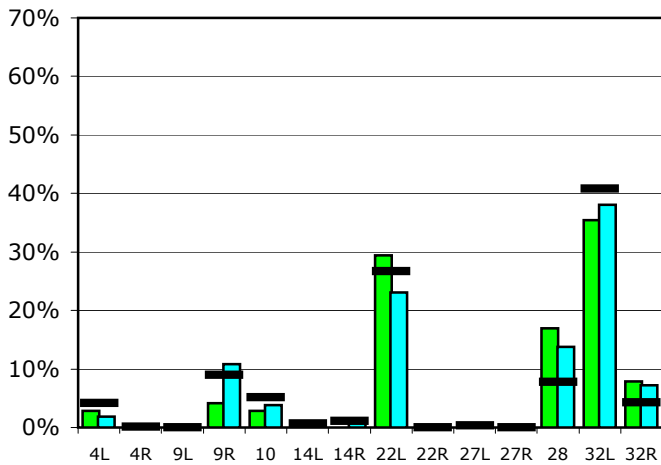
## Runway Use (10 p.m. to 7 a.m.)

Source: Airport Noise Management System (ANMS)

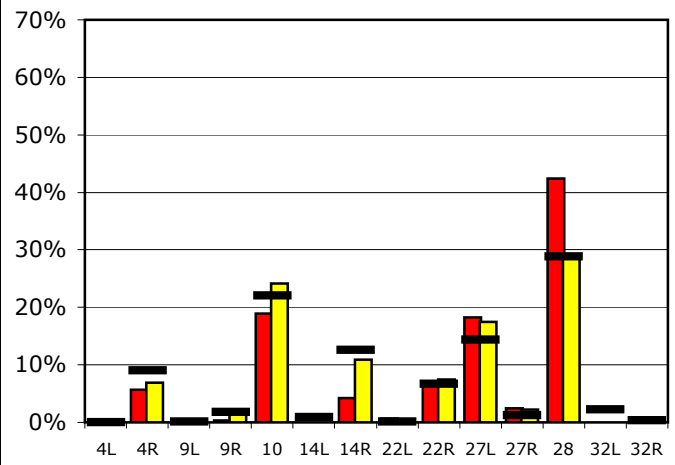
### Runway Utilization

	4L	4R	9L	9R	10	14L	14R	22L	22R	27L	27R	28	32L	32R
<b>Average Daily Departures</b>														
<b>October 2010</b>	3	0	0	4	3	0	0	28	0	0	0	16	33	7
September 2010	2	0	0	10	3	0	1	21	0	0	0	12	35	7
12 Month Avg.	4	0	0	8	4	1	1	23	0	0	0	7	35	4
<b>Average Daily Arrivals</b>														
<b>October 2010</b>	0	7	0	0	23	0	5	1	8	22	3	51	0	0
September 2010	0	8	0	2	29	0	13	0	9	21	3	35	0	0
12 Month Avg.	0	11	0	2	26	1	15	0	8	17	1	34	3	0

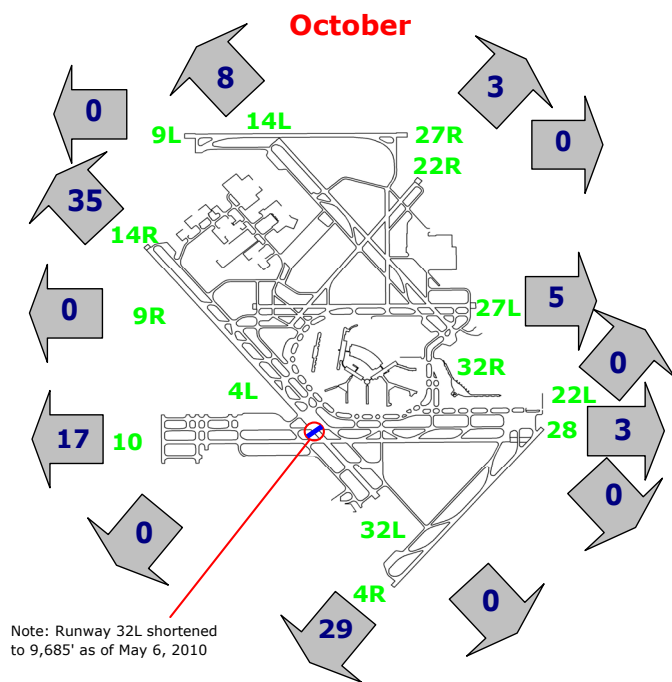
### Departures (10 p.m. to 7 a.m.)



### Arrivals (10 p.m. to 7 a.m.)



### Percentage Departure Utilization



### Percentage Arrival Utilization

