

# Runway Use Report

Chicago O'Hare International Airport

Period: November 2010

Time of Day: 10:00 p.m. to 7:00 a.m.



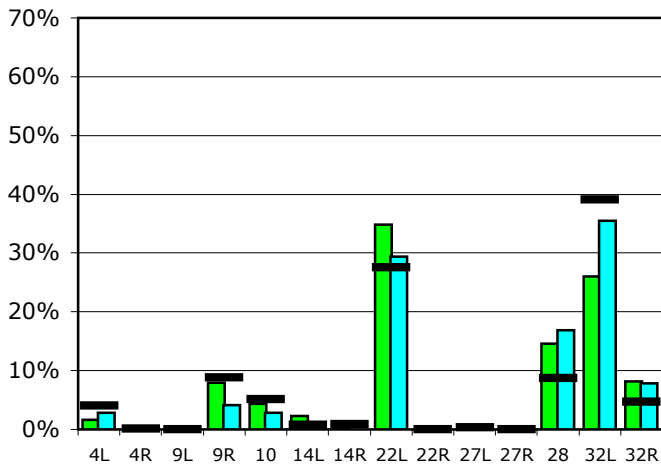
## Runway Use (10 p.m. to 7 a.m.)

Source: Airport Noise Management System (ANMS)

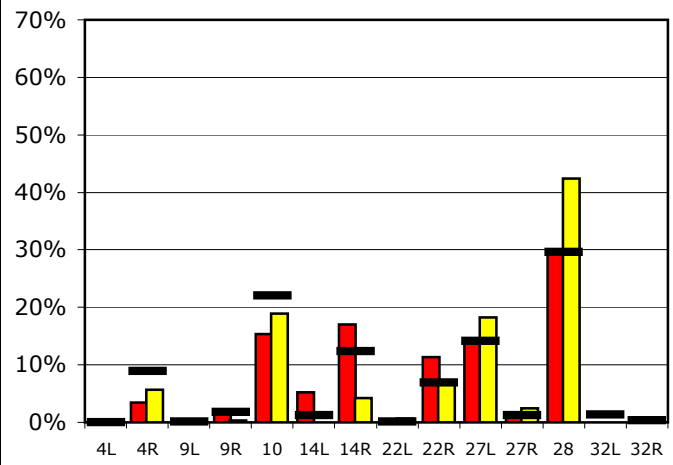
### Runway Utilization

	4L	4R	9L	9R	10	14L	14R	22L	22R	27L	27R	28	32L	32R
<b>Average Daily Departures</b>														
November 2010	1	0	0	7	4	2	0	32	0	0	0	14	24	8
October 2010	3	0	0	4	3	0	0	28	0	0	0	16	33	7
12 Month Avg.	4	0	0	8	5	1	1	25	0	0	0	8	35	4
<b>Average Daily Arrivals</b>														
November 2010	0	4	0	2	18	6	20	0	13	17	2	35	0	1
October 2010	0	7	0	0	23	0	5	1	8	22	3	51	0	0
12 Month Avg.	0	10	0	2	26	1	15	0	8	17	1	35	2	0

### Departures (10 p.m. to 7 a.m.)

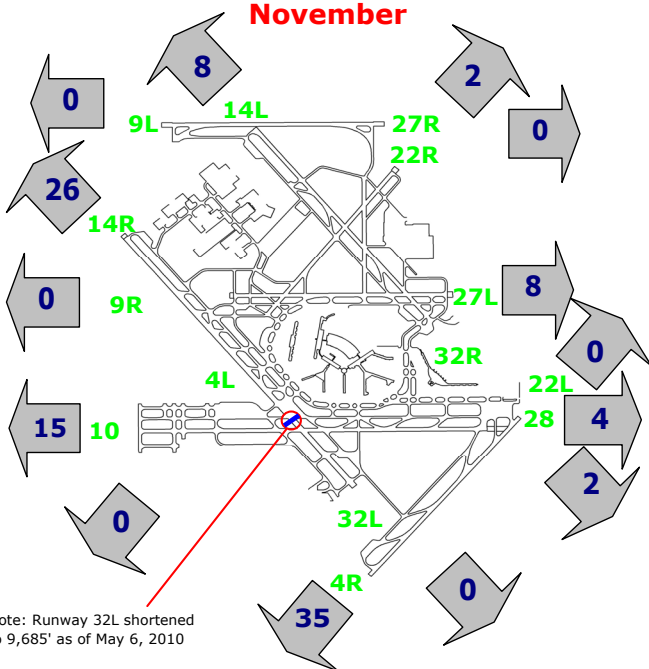


### Arrivals (10 p.m. to 7 a.m.)



### Percentage Departure Utilization

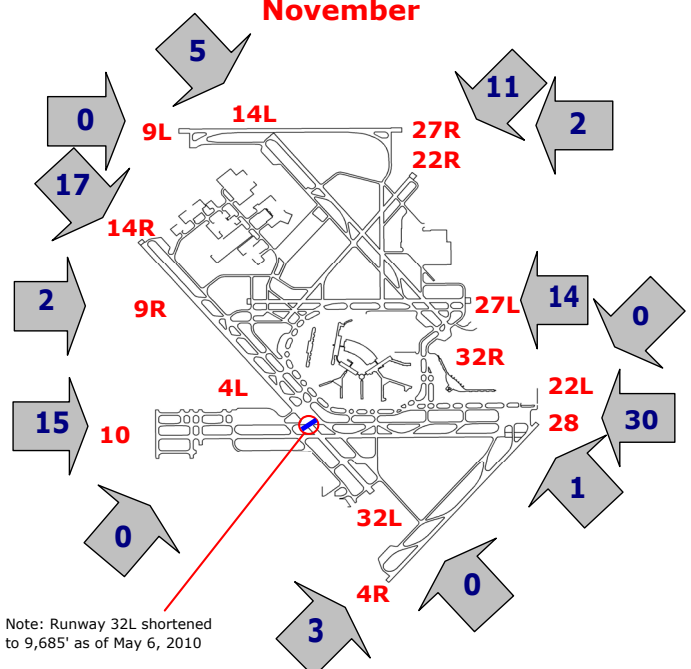
November



Note: Runway 32L shortened to 9,685' as of May 6, 2010

### Percentage Arrival Utilization

November



Note: Runway 32L shortened to 9,685' as of May 6, 2010