

Runway Use Report

Chicago O'Hare International Airport

Period: December 2010

Time of Day: All hours



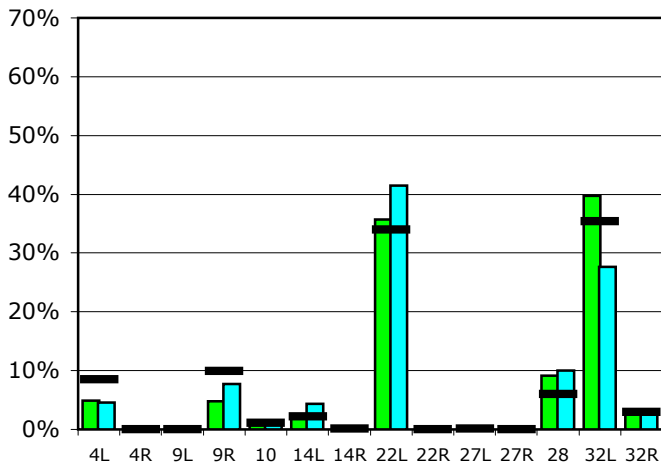
Runway Use (All hours)

Source: Airport Noise Management System (ANMS)

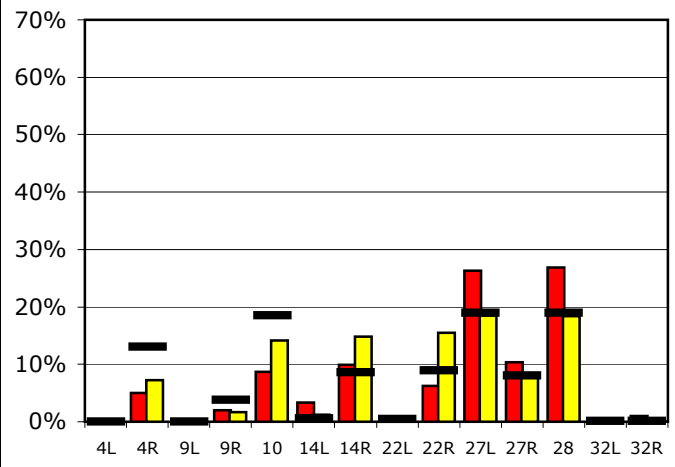
Runway Utilization

	4L	4R	9L	9R	10	14L	14R	22L	22R	27L	27R	28	32L	32R
Average Daily Departures														
December 2010	55	0	0	53	8	27	0	401	0	0	0	103	447	29
November 2010	54	0	0	93	17	52	0	495	0	0	0	119	331	32
12 Month Avg.	95	0	0	110	12	25	1	378	0	1	0	66	393	32
Average Daily Arrivals														
December 2010	0	55	1	22	96	37	109	2	69	290	114	295	0	11
November 2010	0	85	0	20	166	15	175	7	182	217	92	215	0	1
12 Month Avg.	0	153	0	44	216	7	100	5	104	222	94	222	1	1

Departures (All hours)

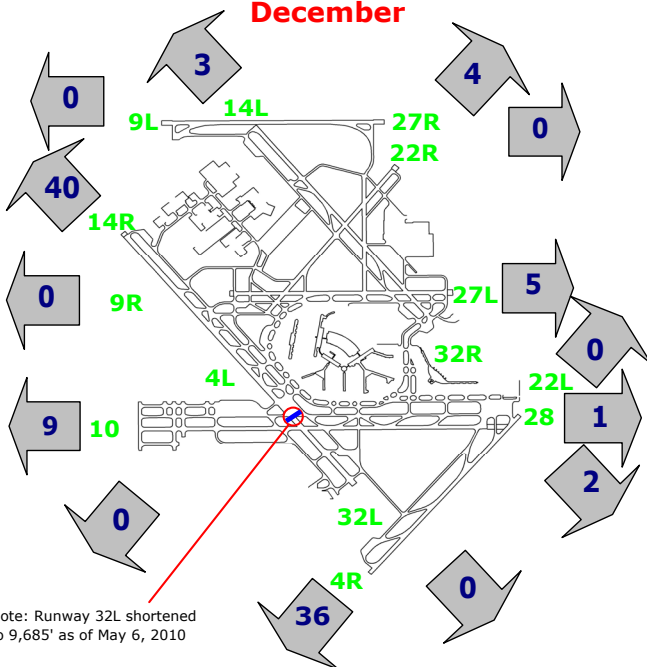


Arrivals (All hours)



Percentage Departure Utilization

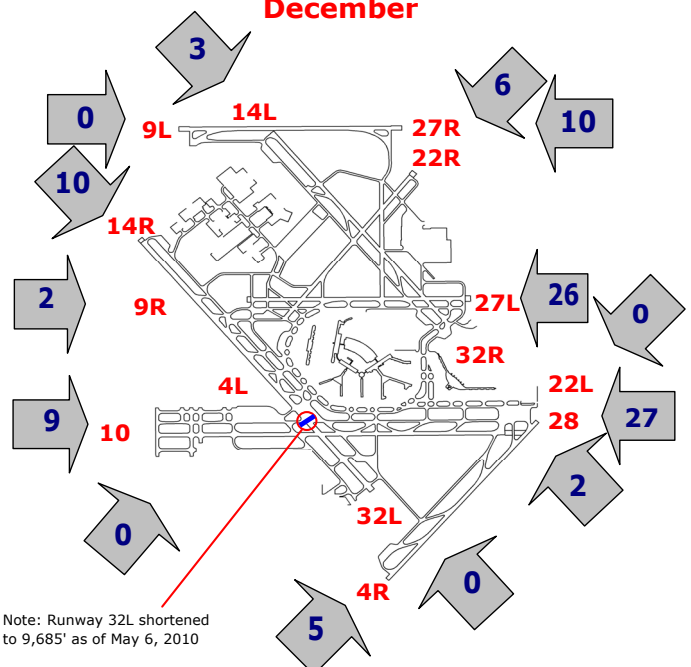
December



Note: Runway 32L shortened to 9,685' as of May 6, 2010

Percentage Arrival Utilization

December



Note: Runway 32L shortened to 9,685' as of May 6, 2010