

Runway Use Report

Chicago O'Hare International Airport

Period: December 2010

Time of Day: 10:00 p.m. to 7:00 a.m.



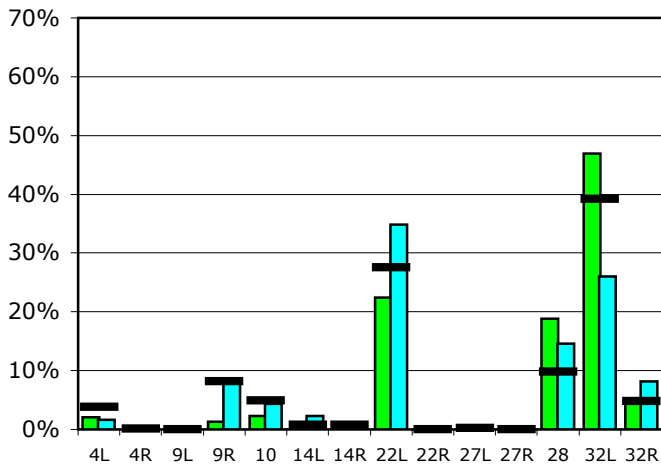
Runway Use (10 p.m. to 7 a.m.)

Source: Airport Noise Management System (ANMS)

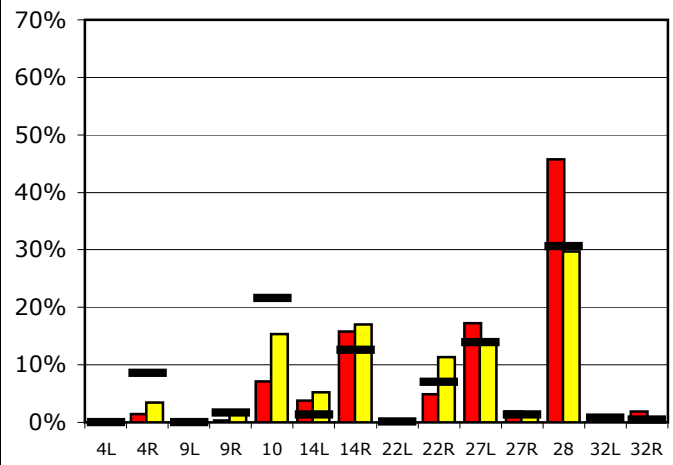
Runway Utilization

	4L	4R	9L	9R	10	14L	14R	22L	22R	27L	27R	28	32L	32R
Average Daily Departures														
December 2010	2	0	0	1	2	1	0	23	0	0	0	19	47	5
November 2010	1	0	0	7	4	2	0	32	0	0	0	14	24	8
12 Month Avg.	3	0	0	7	4	1	1	25	0	0	0	9	36	4
Average Daily Arrivals														
December 2010	0	2	0	0	8	4	18	0	6	20	2	52	0	2
November 2010	0	4	0	2	18	6	20	0	13	17	2	35	0	1
12 Month Avg.	0	10	0	2	26	2	15	0	8	16	2	36	1	1

Departures (10 p.m. to 7 a.m.)

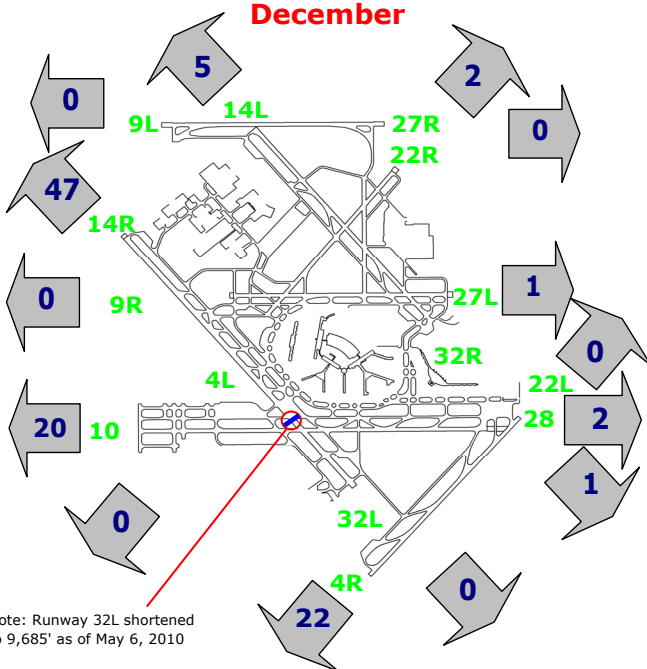


Arrivals (10 p.m. to 7 a.m.)



Percentage Departure Utilization

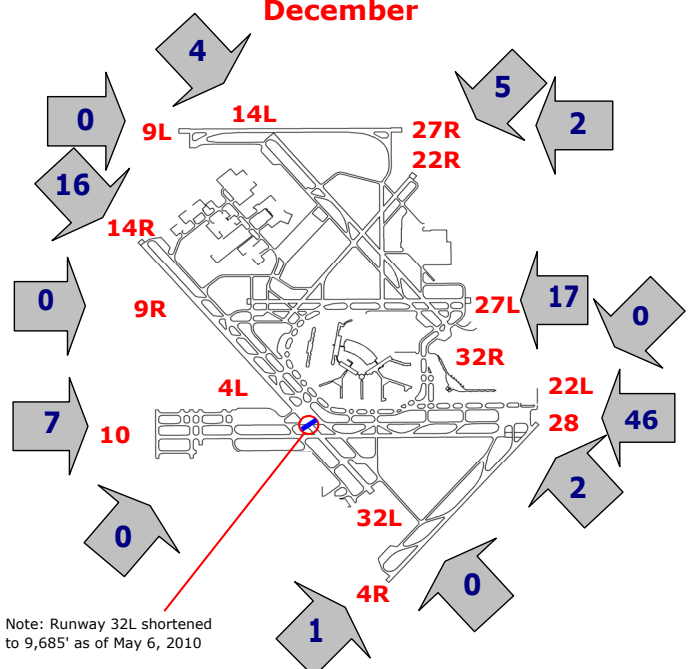
December



Note: Runway 32L shortened to 9,685' as of May 6, 2010

Percentage Arrival Utilization

December



Note: Runway 32L shortened to 9,685' as of May 6, 2010