

Runway Use Report

Chicago O'Hare International Airport

Period: November 2009

Time of Day: All hours



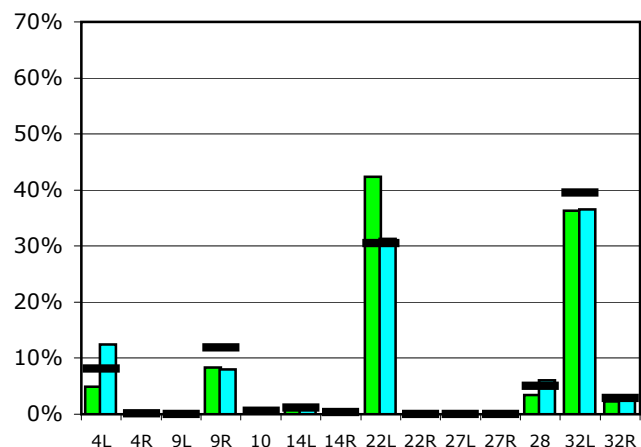
Runway Use (All hours)

Source: Airport Noise Management System (ANMS)

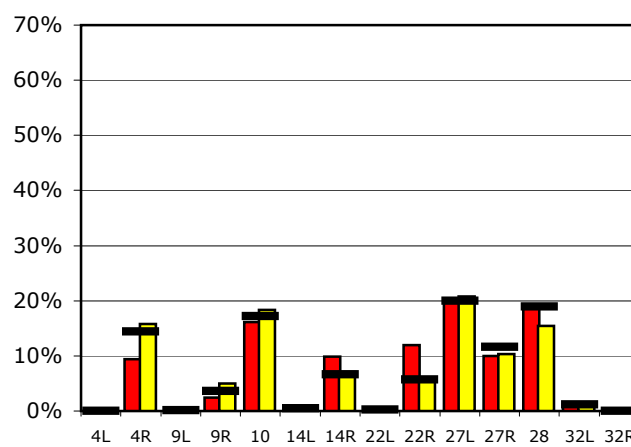
Runway Utilization

	4L	4R	9L	9R	10	14L	14R	22L	22R	27L	27R	28	32L	32R	
Average Daily Departures															
November 2009	46	0	0	78	6	13	4	400	0	1	0	32	342	21	
October 2009	118	0	0	76	9	11	6	297	0	1	0	58	348	27	
12 Month Avg.	84	1	0	122	5	12	3	314	0	0	0	52	408	29	
Average Daily Arrivals															
November 2009	0	102	0	26	175	3	106	1	129	221	108	201	12	0	
October 2009	0	177	0	56	205	2	79	1	67	233	116	173	10	0	
12 Month Avg.	0	159	1	40	189	5	73	3	63	220	128	209	13	1	

Departures (All hours)

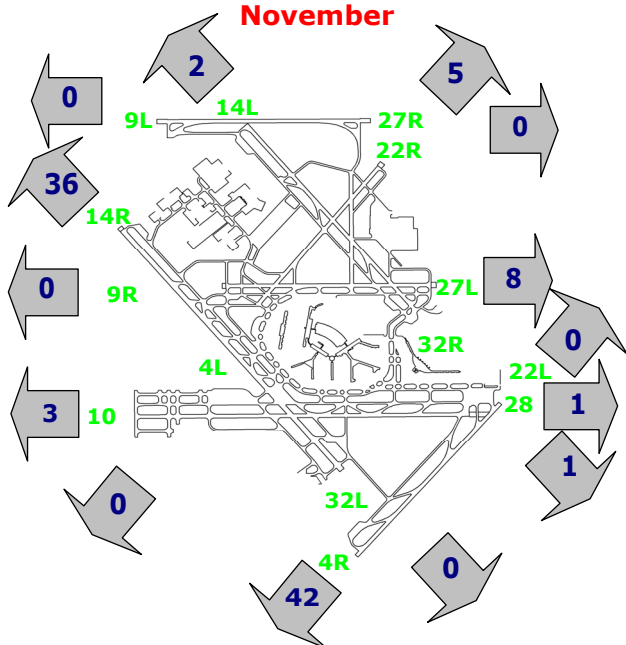


Arrivals (All hours)



Percentage Departure Utilization

November



Percentage Arrival Utilization

November

