

Runway Use Report

Chicago O'Hare International Airport

Period: November 2009

Time of Day: 10:00 p.m. to 7:00 a.m.



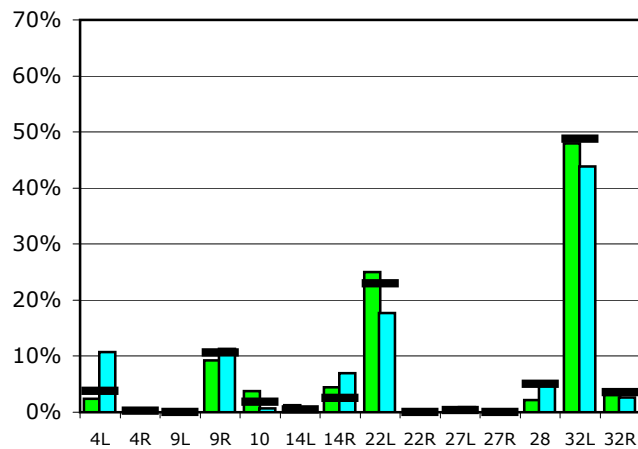
Runway Use (10 p.m. to 7 a.m.)

Source: Airport Noise Management System (ANMS)

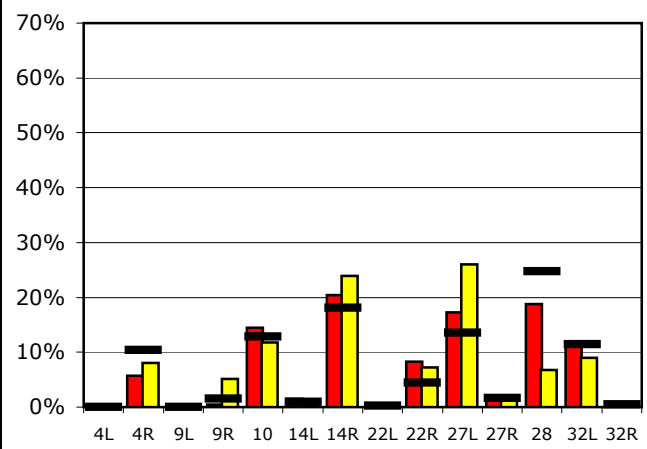
Runway Utilization

	4L	4R	9L	9R	10	14L	14R	22L	22R	27L	27R	28	32L	32R	
Average Daily Departures															
November 2009	2	0	0	6	2	1	3	16	0	0	0	1	30	2	
October 2009	8	0	0	8	1	0	5	13	0	1	0	3	32	2	
12 Month Avg.	3	0	0	9	2	0	2	19	0	0	0	4	41	3	
Average Daily Arrivals															
November 2009	0	6	0	0	15	2	21	0	9	18	1	19	12	0	
October 2009	0	9	0	6	13	0	27	0	8	29	2	8	10	0	
12 Month Avg.	0	12	0	2	15	1	21	0	5	15	2	28	13	1	

Departures (10 p.m. to 7 a.m.)

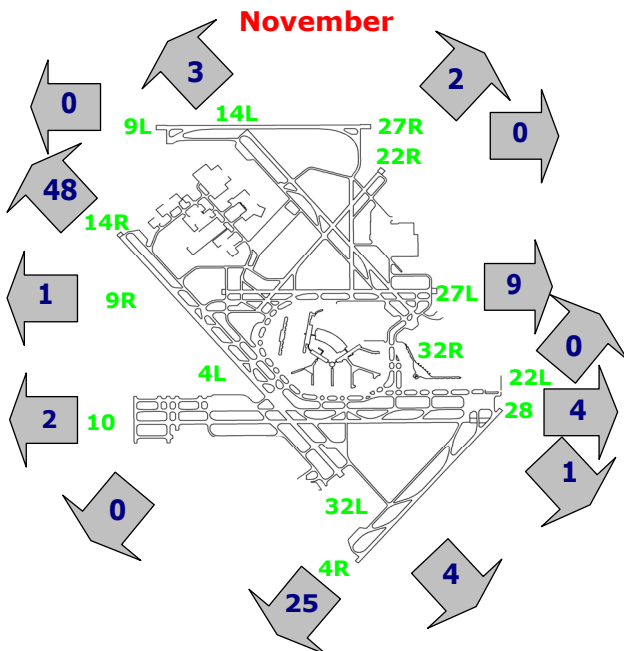


Arrivals (10 p.m. to 7 a.m.)



Percentage Departure Utilization

November



Percentage Arrival Utilization

November

