

# Runway Use Report

Chicago O'Hare International Airport

Period: May 2010

Time of Day: All hours



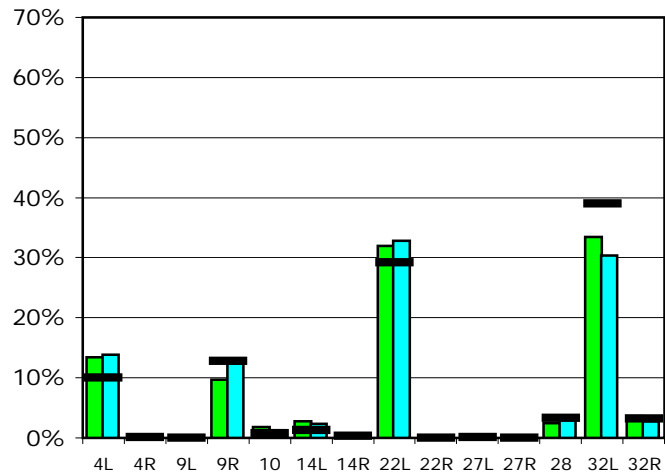
## Runway Use (All hours)

Source: Airport Noise Management System (ANMS)

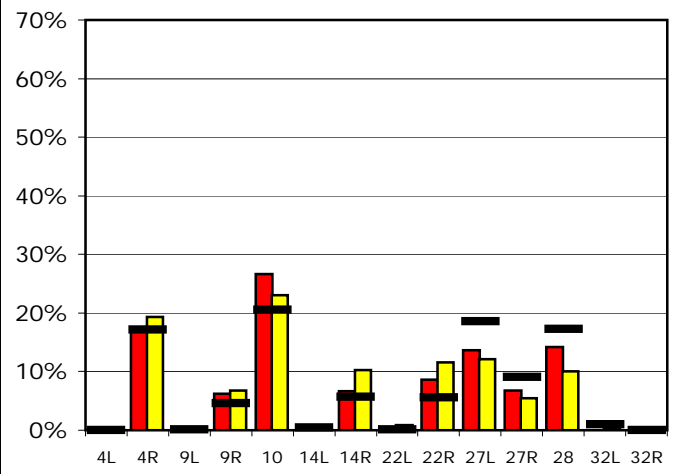
### Runway Utilization

	4L	4R	9L	9R	10	14L	14R	22L	22R	27L	27R	28	32L	32R
<b>Average Daily Departures</b>														
May 2010	138	0	0	100	19	29	0	335	0	2	0	25	345	37
April 2010	144	0	0	129	13	24	3	339	0	1	0	37	314	29
12 Month Avg.	102	1	0	129	7	13	3	294	0	1	0	33	394	33
<b>Average Daily Arrivals</b>														
May 2010	0	203	0	74	316	0	79	1	102	162	80	169	0	0
April 2010	0	225	0	79	270	3	120	10	136	142	64	117	3	0
12 Month Avg.	0	192	1	51	230	5	64	1	63	208	101	193	11	0

## Departures (All hours)

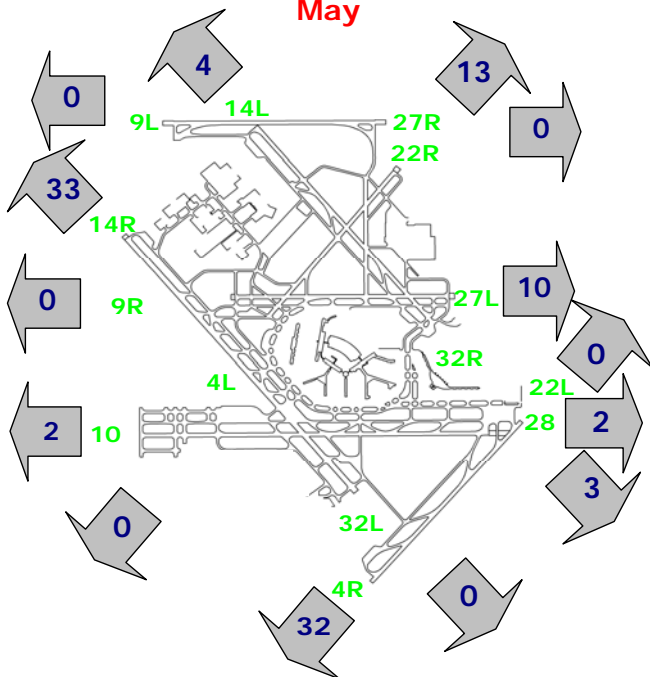


## Arrivals (All hours)



## Percentage Departure Utilization

May



## Percentage Arrival Utilization

May

