

# Runway Use Report

Chicago O'Hare International Airport

Period: May 2009

Time of Day: All hours



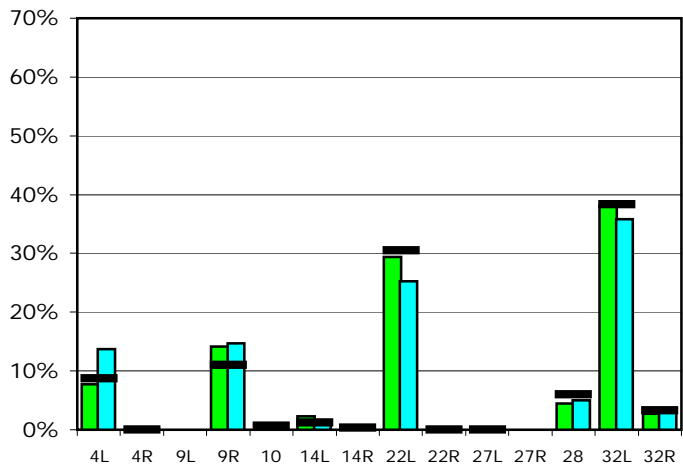
## Runway Use (All hours)

Source: Airport Noise Management System (ANMS)

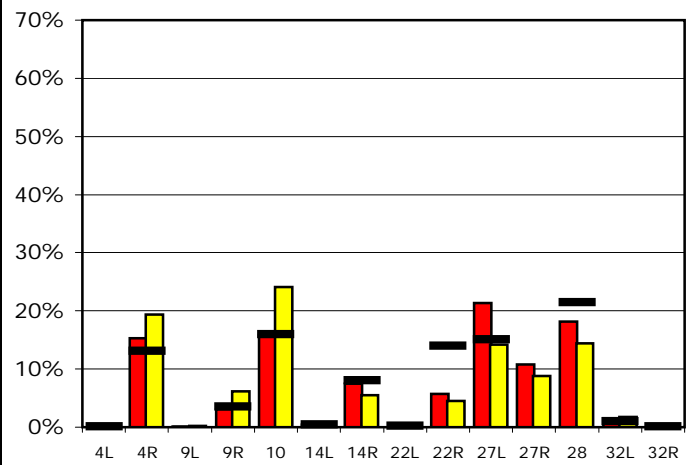
### Runway Utilization<sup>1</sup>

	4L	4R	9L	9R	10	14L	14R	22L	22R	27L	27R	28	32L	32R
<b>Average Daily Departures</b>														
May 2009	81	0	0	149	4	24	6	308	0	0	0	47	399	28
April 2009	145	0	0	155	11	9	2	267	0	0	0	53	377	35
12 Month Avg.	94	0	n/a	119	7	13	4	329	0	0	n/a	64	413	35
<b>Average Daily Arrivals</b>														
May 2009	0	169	1	34	175	4	82	1	63	235	119	199	16	0
April 2009	0	215	2	68	269	7	61	4	50	158	99	160	20	0
12 Month Avg.	1	147	n/a	40	181	5	91	3	158	170	n/a	242	11	2

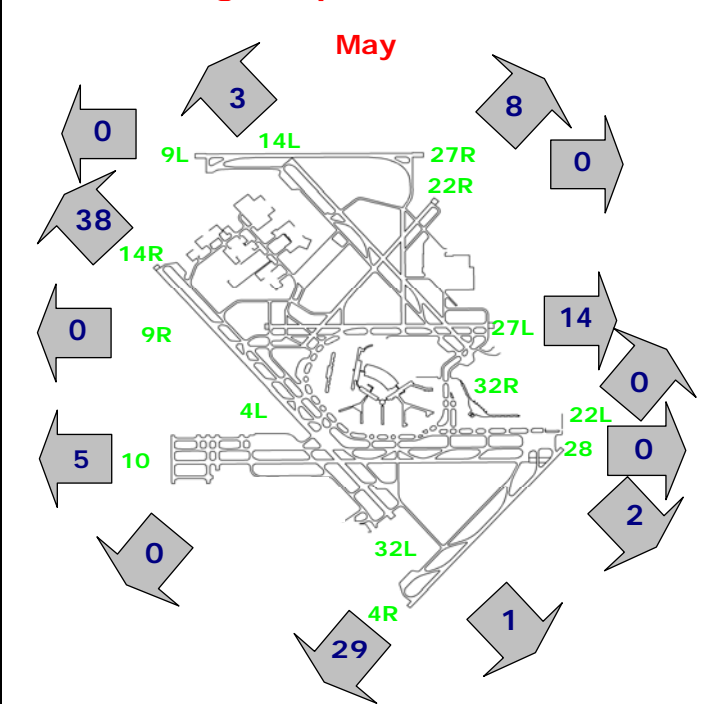
## Departures (All hours)



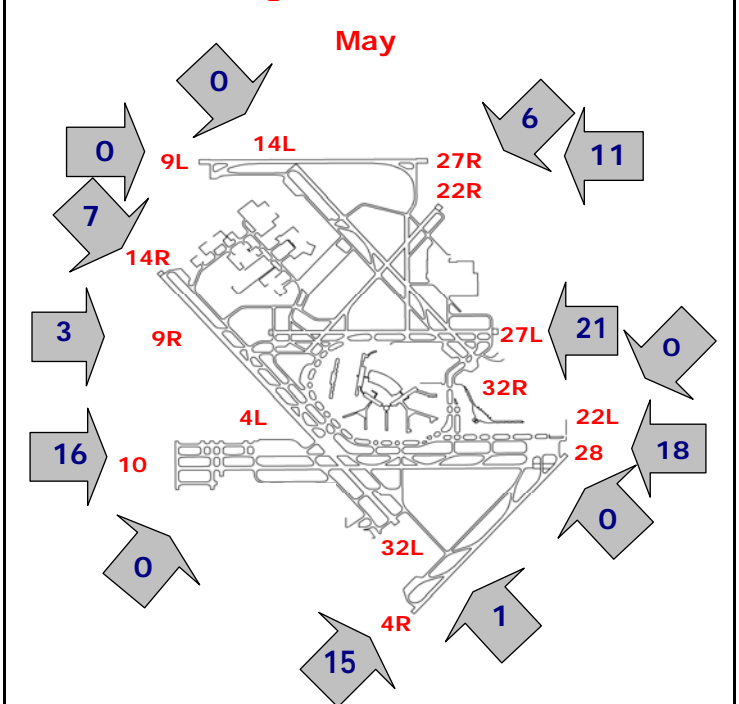
## Arrivals (All hours)



## Percentage Departure Utilization



## Percentage Arrival Utilization



<sup>1</sup> Runway 9L/27R was commissioned on November 20, 2008