

Runway Use Report

Chicago O'Hare International Airport

Period: May 2008

Time of Day: All hours



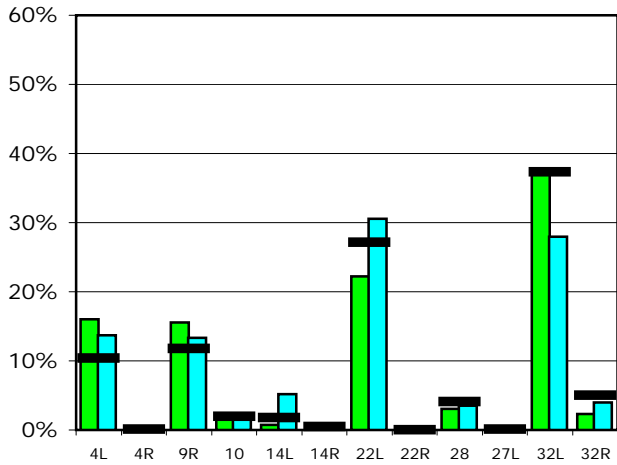
Runway Use (All hours)

Source: Airport Noise Management System (ANMS)

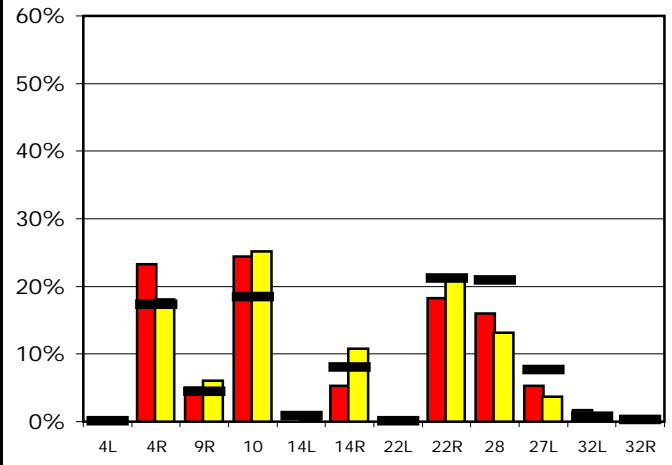
Runway Utilization

		4L	4R	9R	10	14L	14R	22L	22R	28	27L	32L	32R
Average Daily Departures													
May 2008	■	187	5	183	21	9	6	260	0	36	0	438	27
April 2008	■	163	0	158	18	61	4	364	0	41	1	333	48
12 Month Avg.	■	123	1	140	23	21	5	321	0	48	1	441	59
Average Daily Arrivals													
May 2008	■	3	287	62	300	0	65	0	225	197	66	21	5
April 2008	■	0	225	75	314	4	134	0	266	164	46	10	5
12 Month Avg.	■	1	213	55	227	10	99	1	262	258	95	10	3

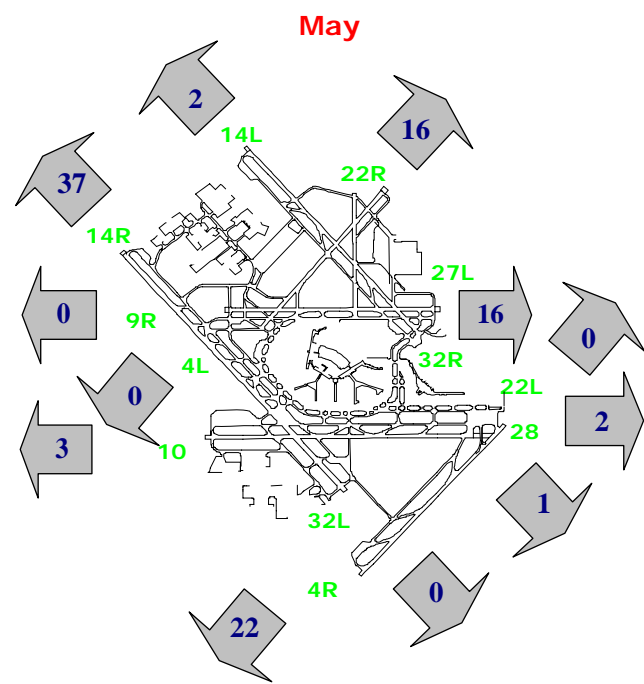
Departures (All hours)



Arrivals (All hours)



Percentage Departure Utilization



Percentage Arrival Utilization

