

Runway Use Report

Chicago O'Hare International Airport

Period: March 2010

Time of Day: All hours



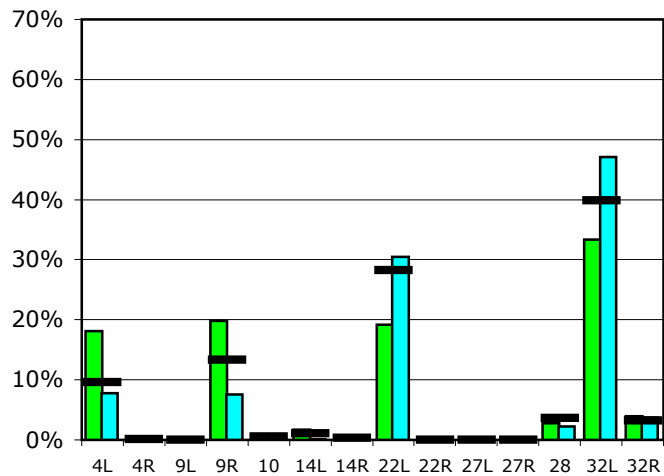
Runway Use (All hours)

Source: Airport Noise Management System (ANMS)

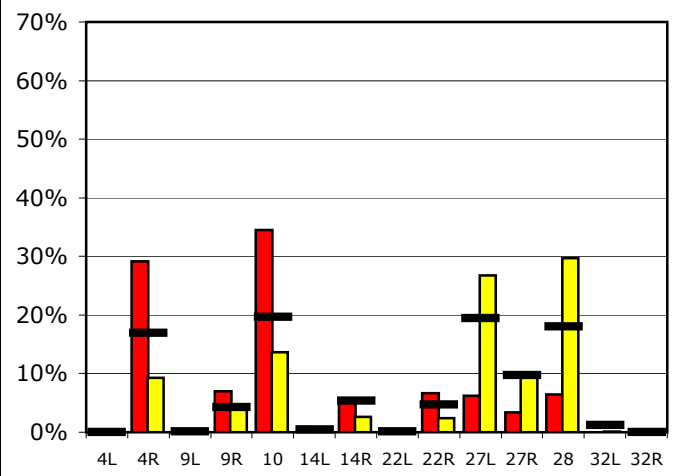
Runway Utilization

	4L	4R	9L	9R	10	14L	14R	22L	22R	27L	27R	28	32L	32R
Average Daily Departures														
March 2010	177	0	0	193	9	17	1	187	0	0	0	27	325	38
February 2010	77	0	0	75	10	1	1	302	0	0	0	22	468	37
12 Month Avg.	97	1	0	135	6	11	3	286	0	0	0	37	404	32
Average Daily Arrivals														
March 2010	0	334	0	79	395	11	65	1	76	71	38	74	0	0
February 2010	0	101	2	50	148	6	29	0	26	291	110	322	1	1
12 Month Avg.	0	188	1	47	218	5	60	1	52	215	107	199	14	0

Departures (All hours)

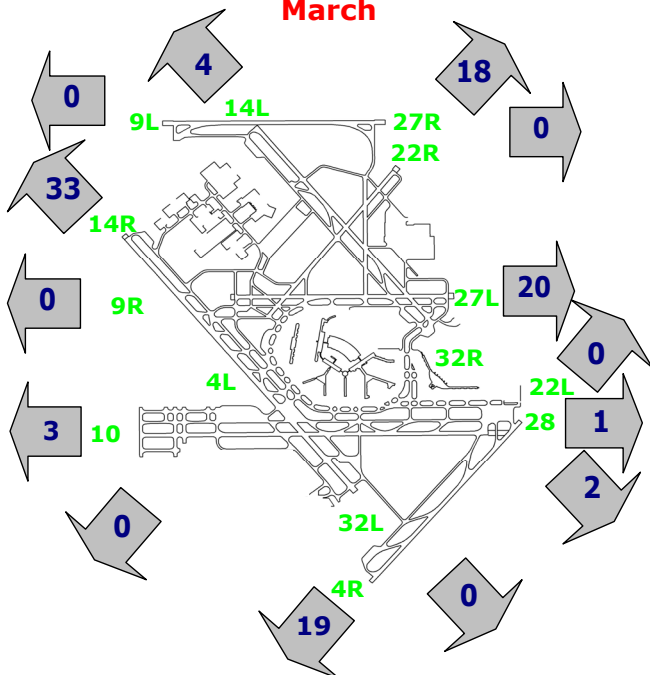


Arrivals (All hours)



Percentage Departure Utilization

March



Percentage Arrival Utilization

March

