

Runway Use Report

Chicago O'Hare International Airport

Period: March 2010

Time of Day: 10:00 p.m. to 7:00 a.m.



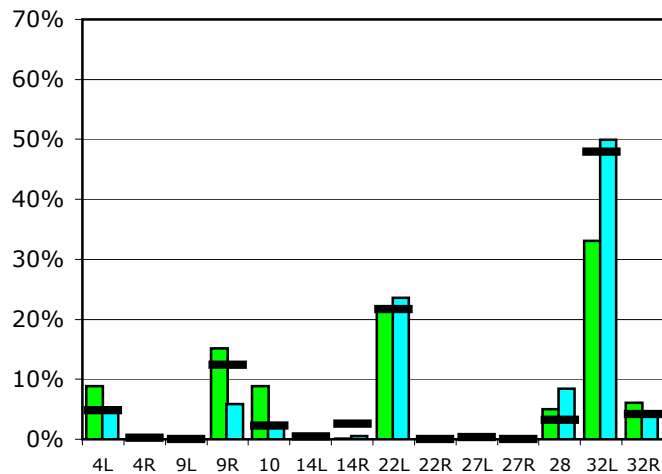
Runway Use (10 p.m. to 7 a.m.)

Source: Airport Noise Management System (ANMS)

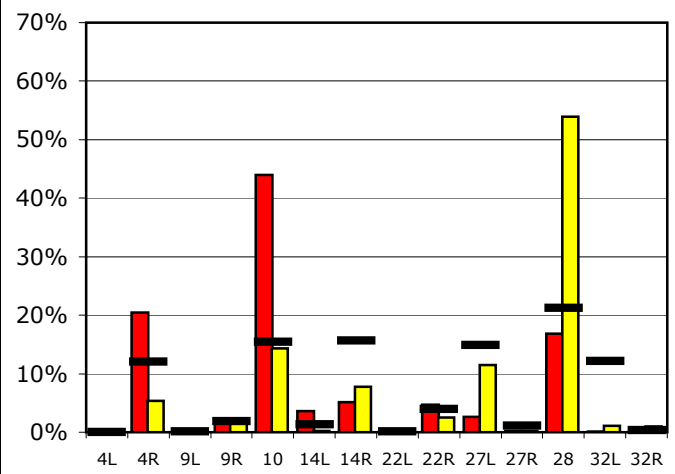
Runway Utilization

	4L	4R	9L	9R	10	14L	14R	22L	22R	27L	27R	28	32L	32R
Average Daily Departures														
March 2010	7	0	0	12	7	0	0	18	0	0	0	4	26	5
February 2010	4	0	0	5	2	0	0	19	0	0	0	7	41	3
12 Month Avg.	4	0	0	10	2	0	2	17	0	0	0	3	39	3
Average Daily Arrivals														
March 2010	0	24	0	2	52	4	6	0	6	3	0	20	0	0
February 2010	0	6	0	2	15	0	8	0	3	12	0	55	1	1
12 Month Avg.	0	14	0	2	17	1	18	0	4	17	1	24	14	0

Departures (10 p.m. to 7 a.m.)

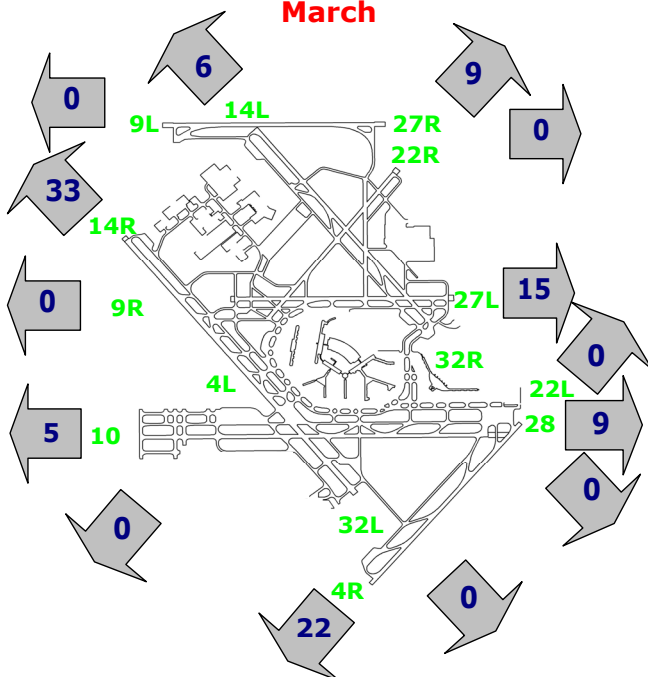


Arrivals (10 p.m. to 7 a.m.)



Percentage Departure Utilization

March



Percentage Arrival Utilization

March

