

Runway Use Report

Chicago O'Hare International Airport

Period: June 2010

Time of Day: All hours



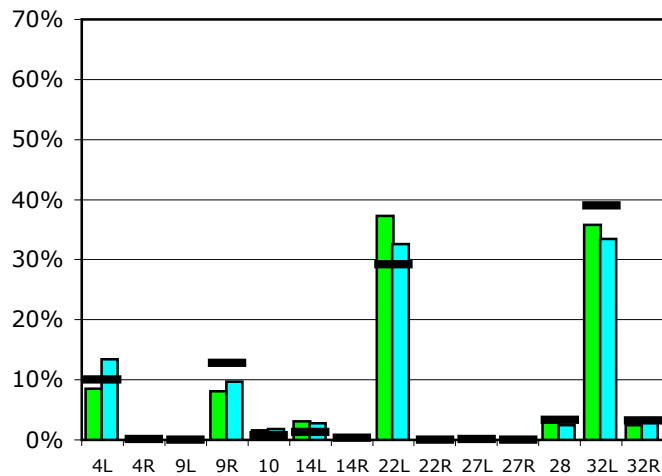
Runway Use (All hours)

Source: Airport Noise Management System (ANMS)

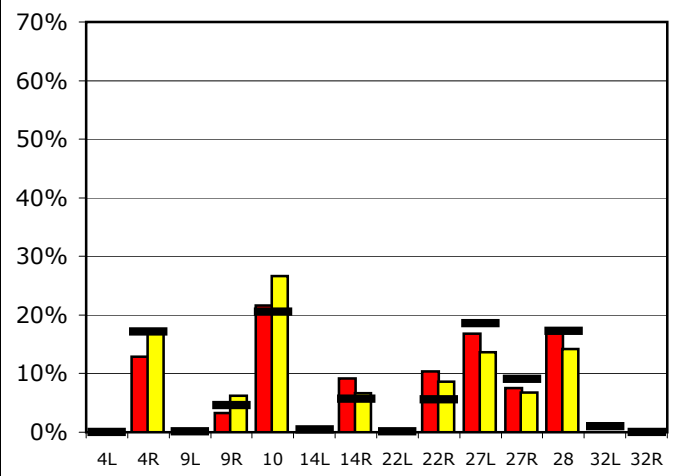
Runway Utilization

	4L	4R	9L	9R	10	14L	14R	22L	22R	27L	27R	28	32L	32R
Average Daily Departures														
June 2010	89	0	0	85	17	32	0	389	0	0	0	31	374	25
May 2010	138	0	0	100	19	29	0	335	0	2	0	25	345	37
12 Month Avg.	102	1	0	129	7	13	3	294	0	1	0	33	394	33
Average Daily Arrivals														
June 2010	0	156	0	40	262	3	111	1	126	204	92	214	0	0
May 2010	0	203	0	74	316	0	79	1	102	162	80	169	0	0
12 Month Avg.	0	192	1	51	230	5	64	1	63	208	101	193	11	0

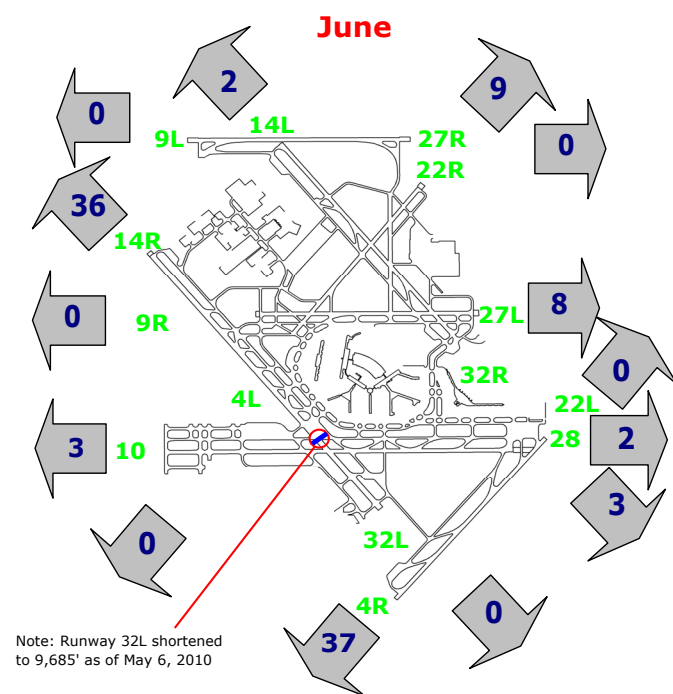
Departures (All hours)



Arrivals (All hours)



Percentage Departure Utilization



Percentage Arrival Utilization

