

Runway Use Report

Chicago O'Hare International Airport

Period: June 2008

Time of Day: All hours



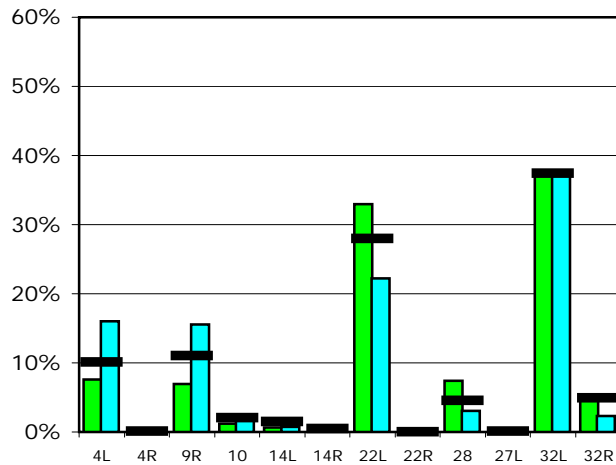
Runway Use (All hours)

Source: Airport Noise Management System (ANMS)

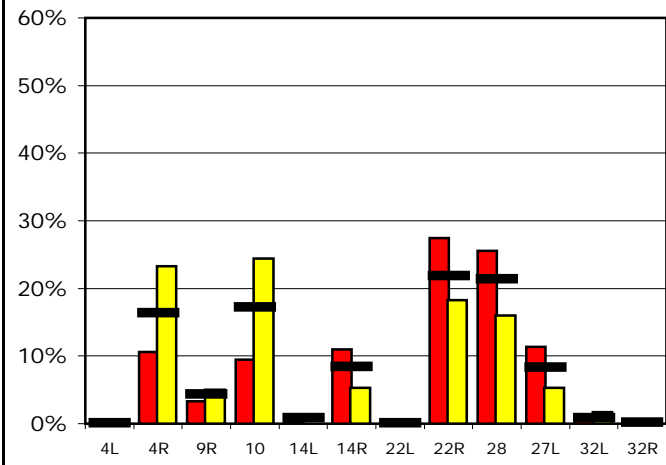
Runway Utilization

	4L	4R	9R	10	14L	14R	22L	22R	28	27L	32L	32R
Average Daily Departures												
June 2008	96	0	89	15	9	12	419	0	94	0	477	58
May 2008	187	5	183	21	9	6	260	0	36	0	438	27
12 Month Avg.	119	1	131	24	18	6	331	0	53	1	442	58
Average Daily Arrivals												
June 2008	0	140	44	126	2	146	0	364	339	150	13	0
May 2008	3	287	62	300	0	65	0	225	197	66	21	5
12 Month Avg.	1	202	54	213	10	104	1	269	264	103	10	3

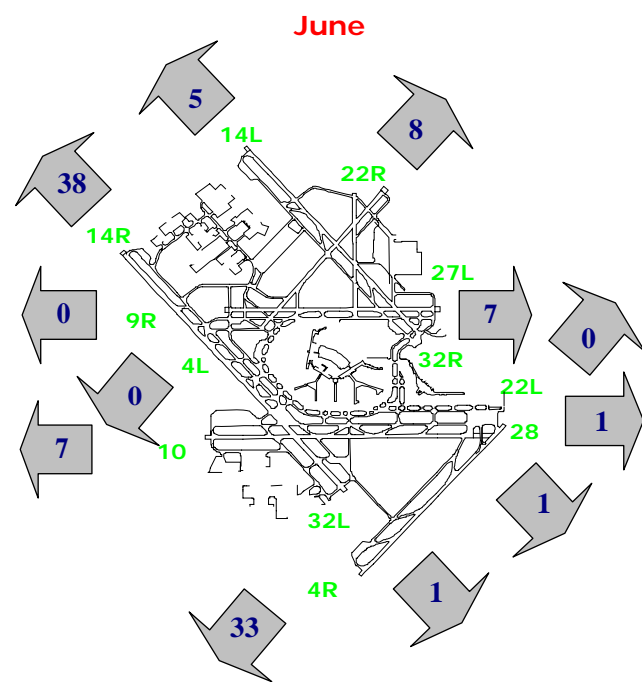
Departures (All hours)



Arrivals (All hours)



Percentage Departure Utilization



Percentage Arrival Utilization

