

# Runway Use Report

Chicago O'Hare International Airport

Period: June 2008

Time of Day: 10:00 p.m. to 7:00 a.m.



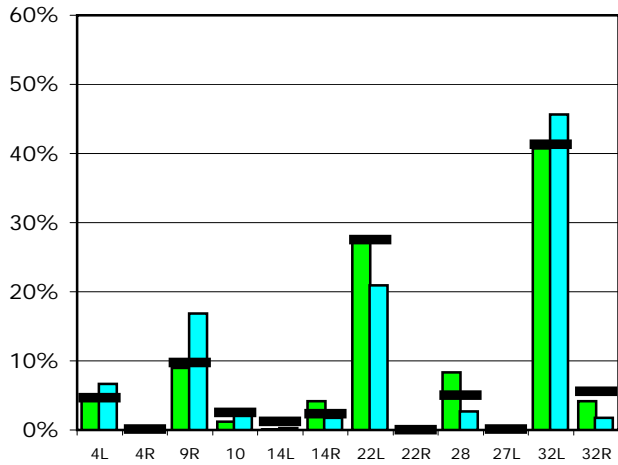
## Runway Use (10 p.m. to 7 a.m.)

Source: Airport Noise Management System (ANMS)

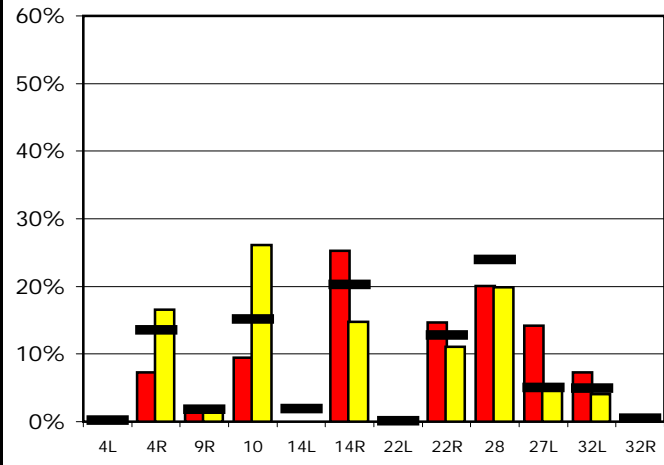
### Runway Utilization

	4L	4R	9R	10	14L	14R	22L	22R	28	27L	32L	32R
<b>Average Daily Departures</b>												
June 2008	7	0	12	2	0	6	36	0	11	0	54	6
May 2008	6	0	15	3	0	2	19	0	2	0	42	2
12 Month Avg.	5	0	11	3	1	3	31	0	6	0	46	6
<b>Average Daily Arrivals</b>												
June 2008	0	11	3	15	0	39	0	23	31	22	11	0
May 2008	0	21	2	33	0	19	0	14	25	7	5	1
12 Month Avg.	0	19	3	22	3	29	0	18	34	7	7	1

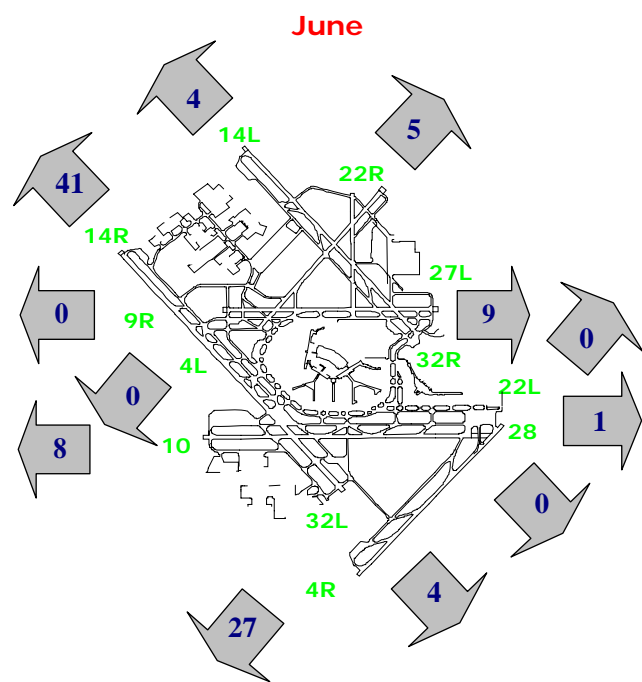
### Departures (10 p.m. to 7 a.m.)



### Arrivals (10 p.m. to 7 a.m.)



### Percentage Departure Utilization



### Percentage Arrival Utilization

