

Runway Use Report

Chicago O'Hare International Airport

Period: July 2010

Time of Day: All hours



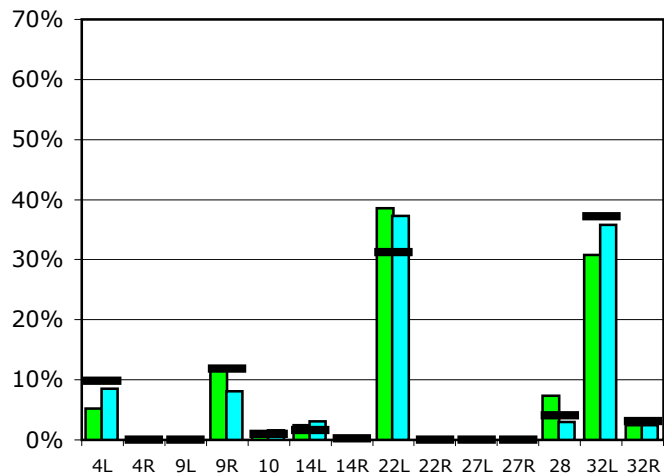
Runway Use (All hours)

Source: Airport Noise Management System (ANMS)

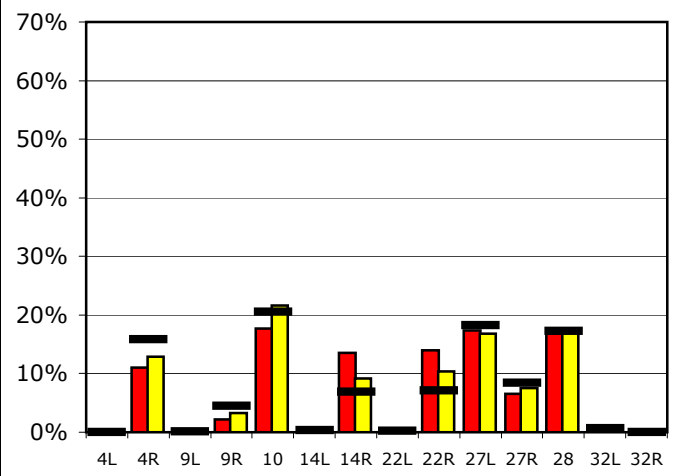
Runway Utilization

	4L	4R	9L	9R	10	14L	14R	22L	22R	27L	27R	28	32L	32R
Average Daily Departures														
July 2010	66	0	0	149	14	31	1	483	0	0	0	91	385	30
June 2010	89	0	0	85	17	32	0	389	0	0	0	31	374	25
12 Month Avg.	100	0	0	121	9	16	2	319	0	1	0	41	380	31
Average Daily Arrivals														
July 2010	0	137	0	27	219	2	168	7	174	215	82	209	0	1
June 2010	0	156	0	40	262	3	111	1	126	204	92	214	0	0
12 Month Avg.	0	180	1	51	233	4	78	2	80	207	95	195	8	0

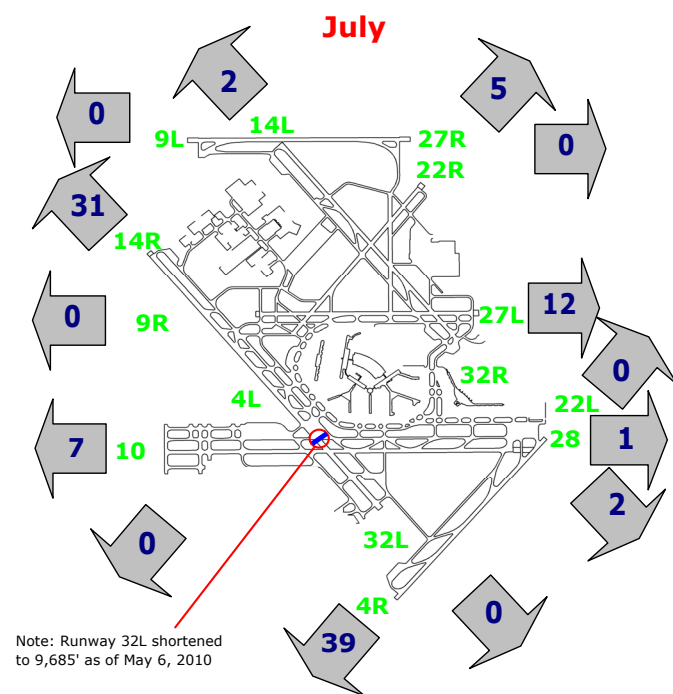
Departures (All hours)



Arrivals (All hours)



Percentage Departure Utilization



Percentage Arrival Utilization

