

# Runway Use Report

Chicago O'Hare International Airport

Period: July 2010

Time of Day: 10:00 p.m. to 7:00 a.m.



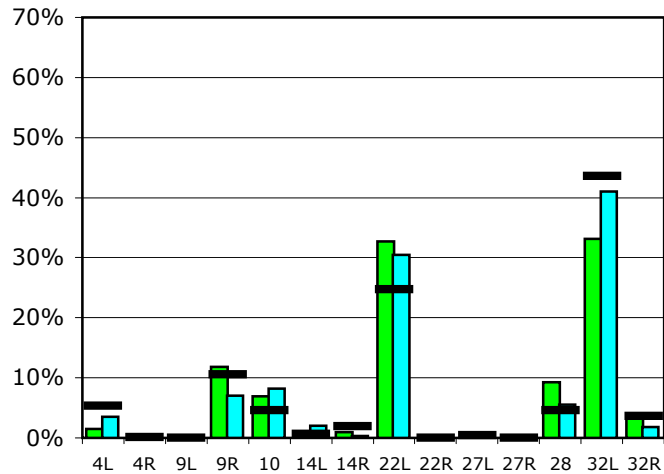
## Runway Use (10 p.m. to 7 a.m.)

Source: Airport Noise Management System (ANMS)

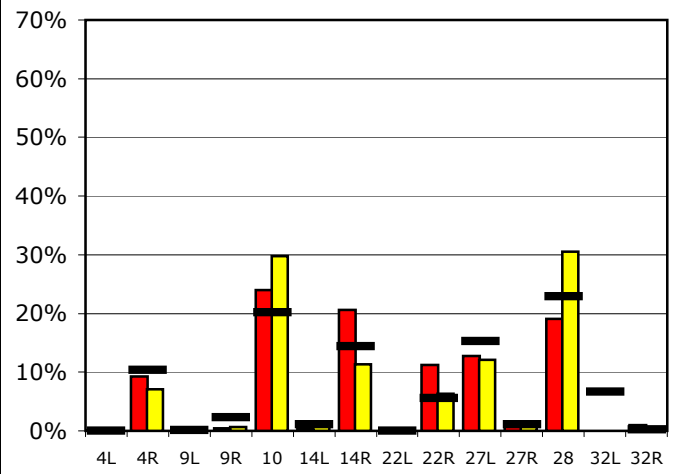
### Runway Utilization

	4L	4R	9L	9R	10	14L	14R	22L	22R	27L	27R	28	32L	32R
<b>Average Daily Departures</b>														
July 2010	1	0	0	9	5	0	1	25	0	0	0	7	25	3
June 2010	4	0	0	8	9	2	0	33	0	0	0	6	45	2
12 Month Avg.	4	0	0	9	4	1	2	20	0	0	0	4	36	3
<b>Average Daily Arrivals</b>														
July 2010	0	11	0	1	28	0	24	0	13	15	1	22	0	1
June 2010	0	10	0	1	41	2	16	0	9	17	1	42	0	0
12 Month Avg.	0	12	0	3	23	1	16	0	6	17	1	26	8	0

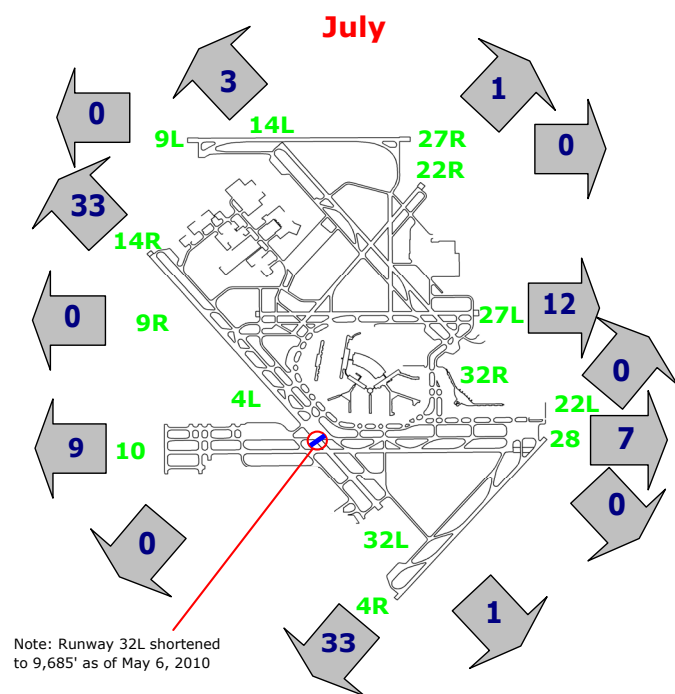
## Departures (10 p.m. to 7 a.m.)



## Arrivals (10 p.m. to 7 a.m.)



## Percentage Departure Utilization



## Percentage Arrival Utilization

