

Runway Use Report

Chicago O'Hare International Airport

Period: July 2009

Time of Day: All hours



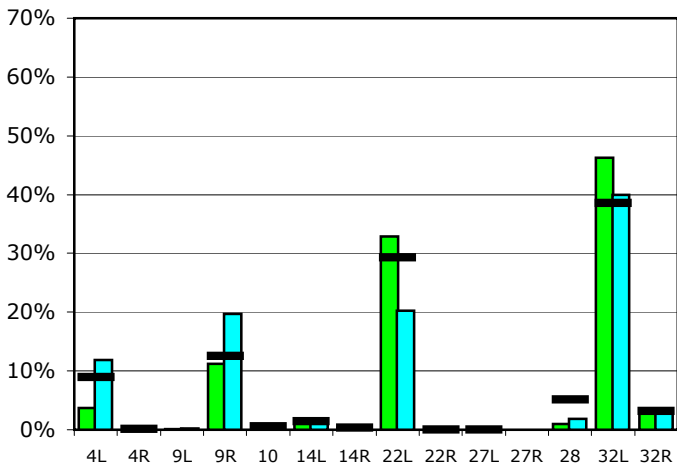
Runway Use (All hours)

Source: Airport Noise Management System (ANMS)

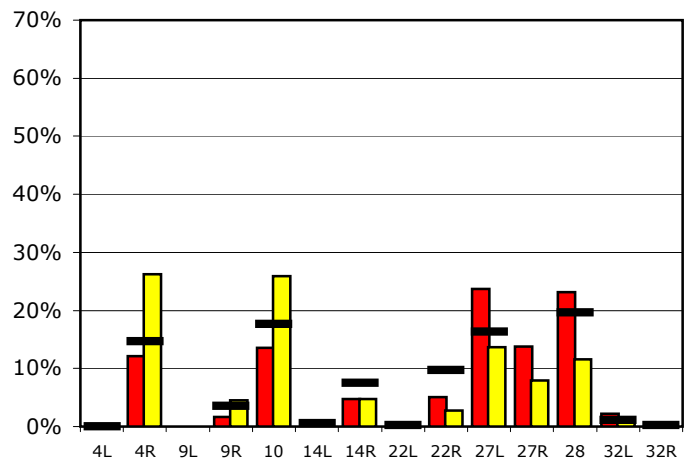
Runway Utilization¹

	4L	4R	9L	9R	10	14L	14R	22L	22R	27L	27R	28	32L	32R
Average Daily Departures														
July 2009	40	0	1	122	1	13	3	355	0	0	0	10	500	36
June 2009	128	6	2	212	3	15	4	217	0	0	0	20	429	37
12 Month Avg.	95	1	n/a	134	6	15	3	314	0	0	n/a	55	412	34
Average Daily Arrivals														
July 2009	0	139	0	19	156	0	55	0	58	271	157	265	25	2
June 2009	0	300	0	52	295	12	55	0	31	155	91	133	17	1
12 Month Avg.	0	164	n/a	39	198	7	84	3	109	183	n/a	220	13	2

Departures (All hours)

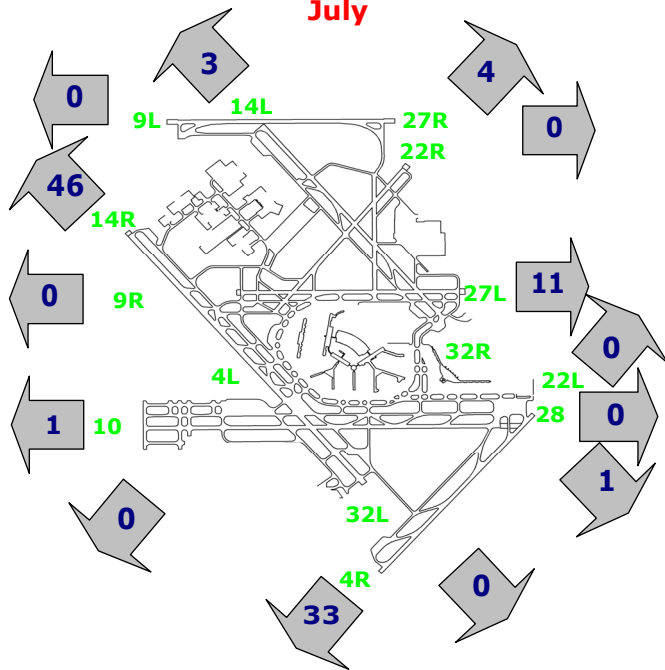


Arrivals (All hours)



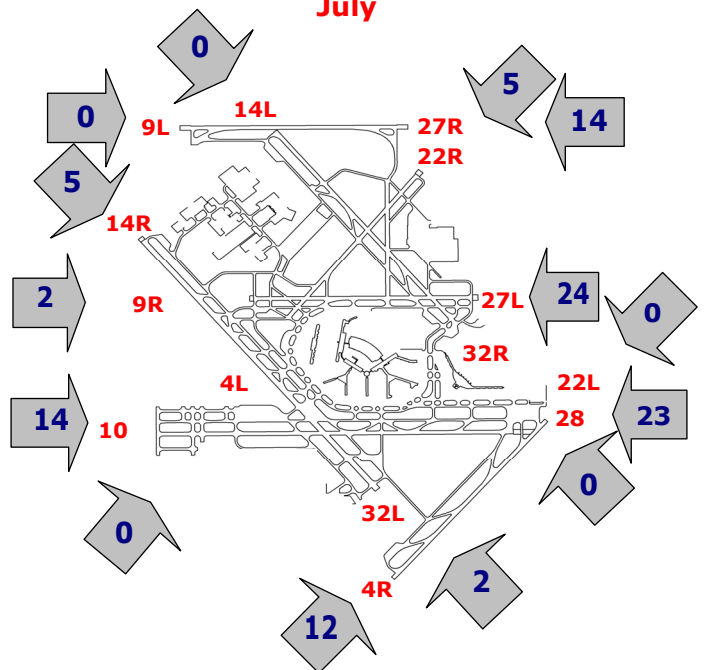
Percentage Departure Utilization

July



Percentage Arrival Utilization

July



¹ Runway 9L/27R was commissioned on November 20, 2008