

Runway Use Report

Chicago O'Hare International Airport

Period: July 2009

Time of Day: 10:00 p.m. to 7:00 a.m.



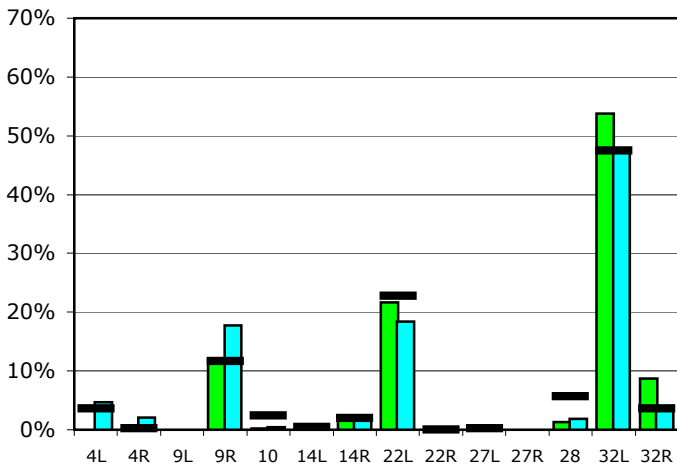
Runway Use (10 p.m. to 7 a.m.)

Source: Airport Noise Management System (ANMS)

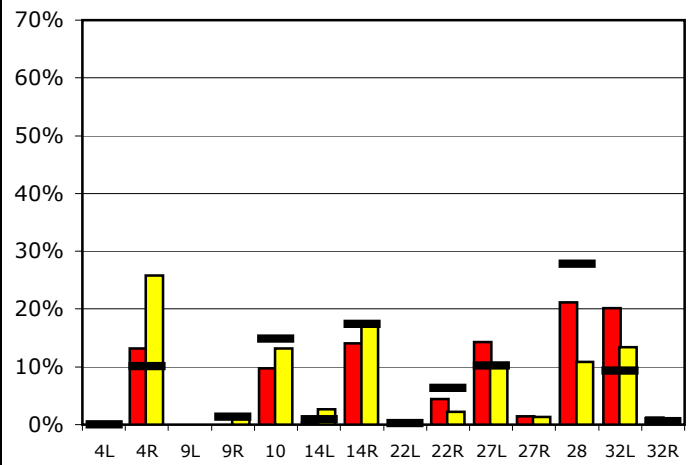
Runway Utilization¹

	4L	4R	9L	9R	10	14L	14R	22L	22R	27L	27R	28	32L	32R	
Average Daily Departures															
July 2009	0	0	0	10	0	0	2	18	0	0	0	1	44	7	
June 2009	4	2	0	17	0	1	2	18	0	0	0	2	46	4	
12 Month Avg.	3	0	n/a	10	2	0	2	21	0	0	n/a	5	43	3	
Average Daily Arrivals															
July 2009	0	16	0	0	12	0	17	0	5	17	2	26	25	2	
June 2009	0	32	0	1	17	3	22	0	3	13	2	14	17	1	
12 Month Avg.	0	12	n/a	2	18	1	21	0	8	12	n/a	33	11	1	

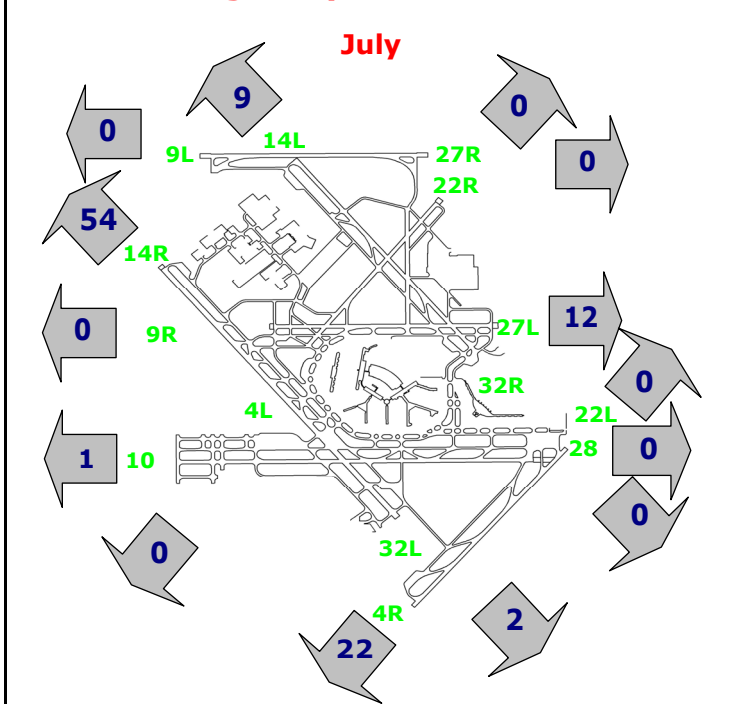
Departures (10 p.m. to 7 a.m.)



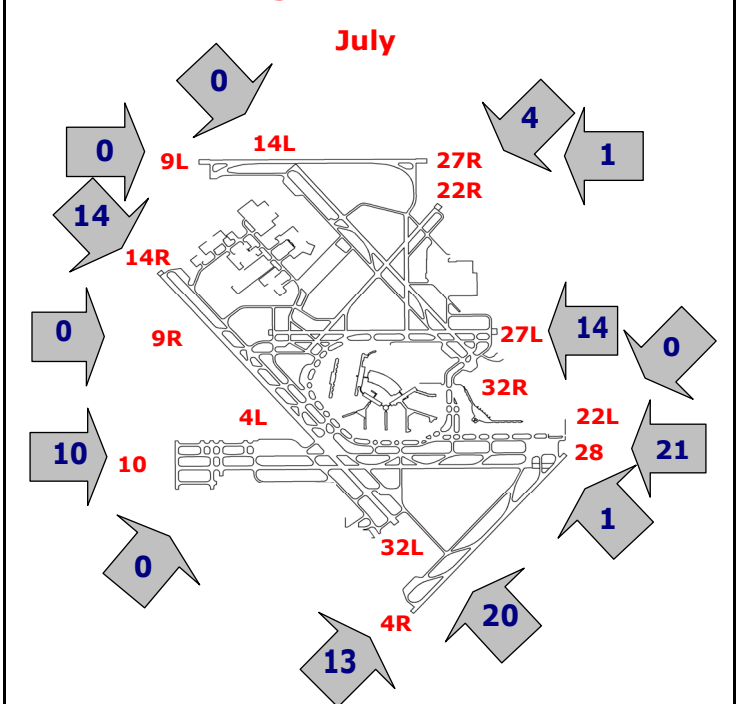
Arrivals (10 p.m. to 7 a.m.)



Percentage Departure Utilization



Percentage Arrival Utilization



¹ Runway 9L/27R was commissioned on November 20, 2008