

# Noise Hotline Report

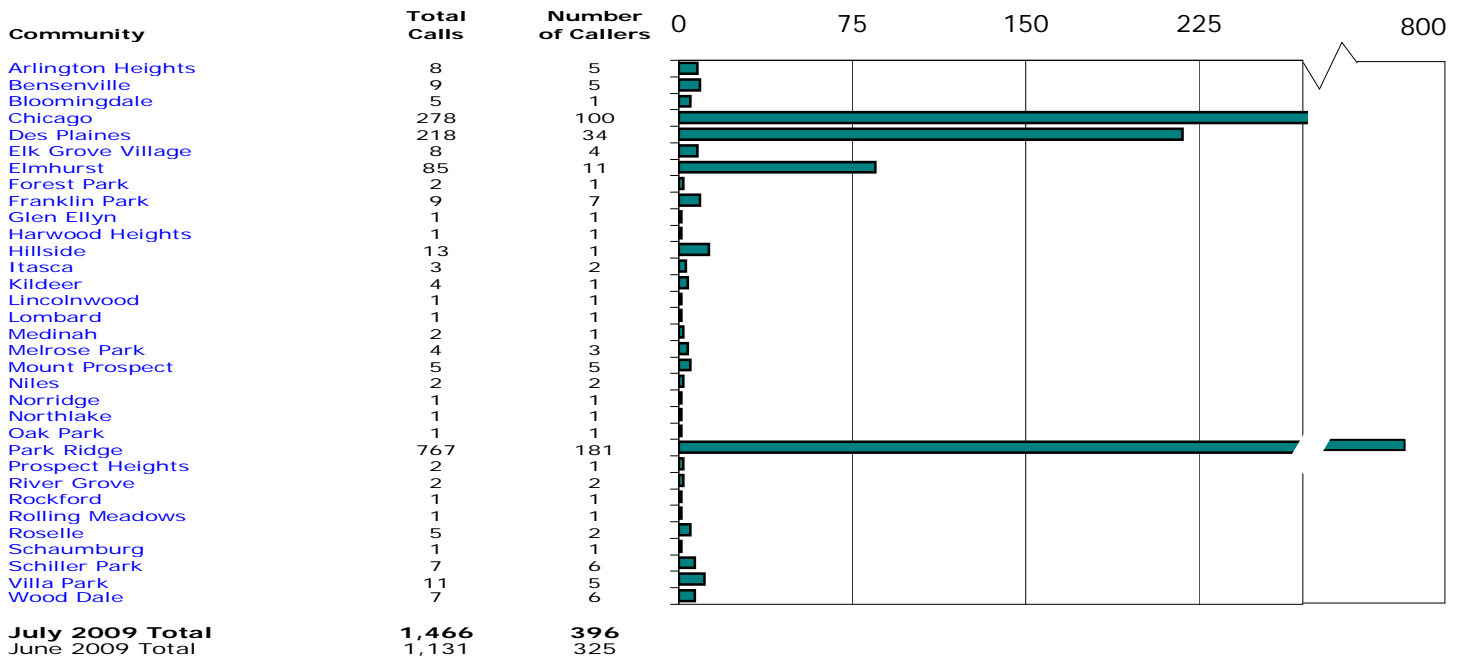
Chicago O'Hare International Airport

Period: July 2009



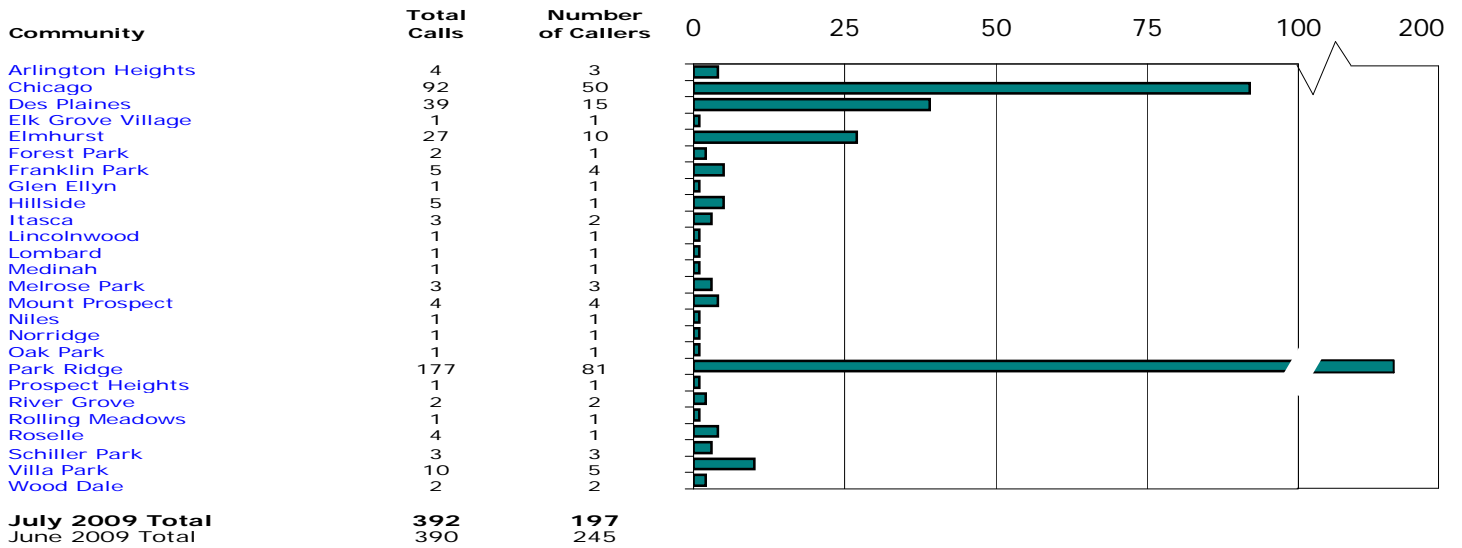
## Monthly Hotline Calls by Community<sup>1</sup>

All Hours



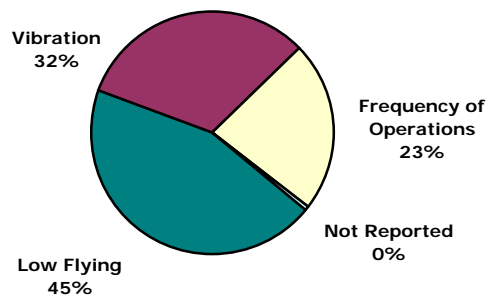
## Monthly Hotline Calls by Community<sup>1</sup>

Nighttime - 10:00 p.m. - 7:00 a.m.



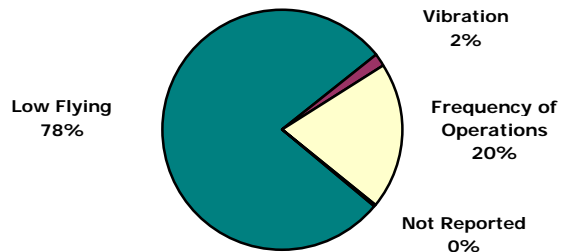
## Nature of Hotline Call Noise Complaint

All Hours



## Nature of Hotline Call Noise Complaint

Nighttime - 10:00 p.m. - 7:00 a.m.



<sup>1</sup> Complaint calls made within the State of Illinois.