

# Runway Use Report

Chicago O'Hare International Airport

Period: July 2008

Time of Day: All hours



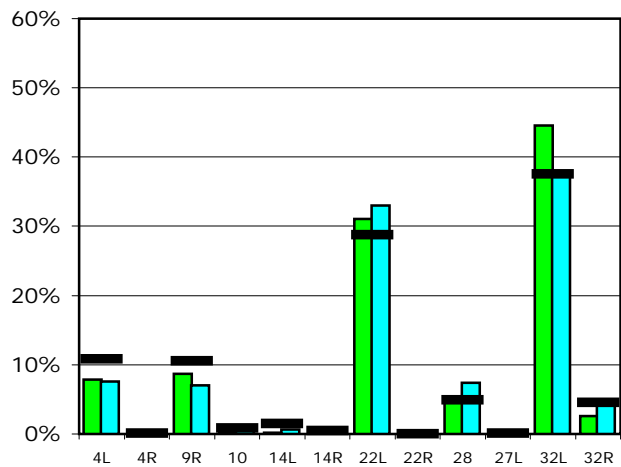
## Runway Use (All hours)

Source: Airport Noise Management System (ANMS)

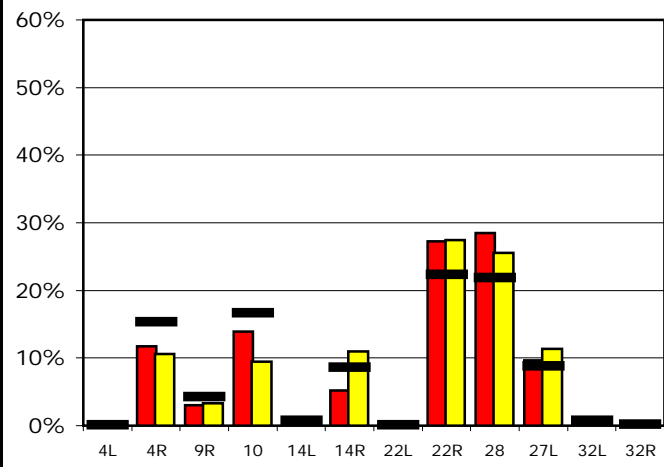
### Runway Utilization

		4L	4R	9R	10	14L	14R	22L	22R	28	27L	32L	32R
<b>Average Daily Departures</b>													
July 2008	<span style="color: green;">■</span>	94	0	103	4	2	2	370	0	54	0	532	31
June 2008	<span style="color: cyan;">■</span>	96	0	89	15	9	12	419	0	94	0	477	58
12 Month Avg.	<span style="color: black;">■</span>	127	1	124	10	17	6	338	0	58	1	441	54
<b>Average Daily Arrivals</b>													
July 2008	<span style="color: red;">■</span>	2	145	37	172	1	65	0	338	353	119	7	0
June 2008	<span style="color: yellow;">■</span>	0	140	44	126	2	146	0	364	339	150	13	0
12 Month Avg.	<span style="color: black;">■</span>	1	189	53	205	10	105	1	275	269	108	10	3

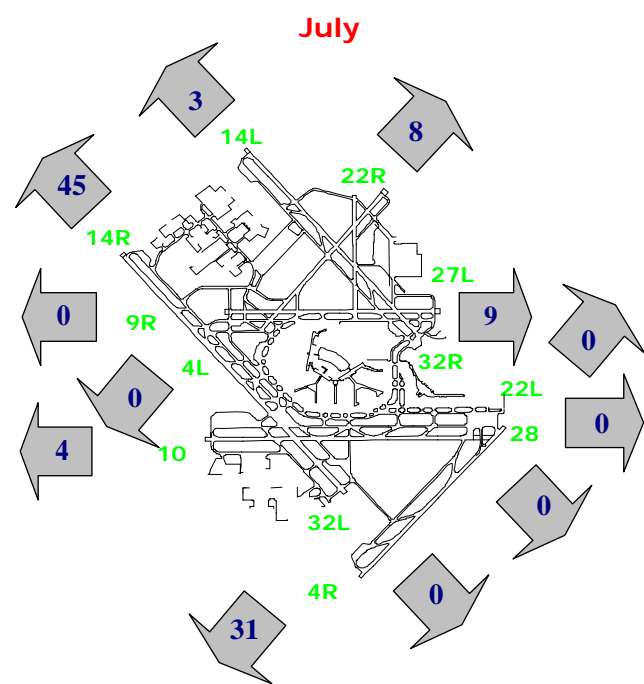
### Departures (All hours)



### Arrivals (All hours)



### Percentage Departure Utilization



### Percentage Arrival Utilization

