

# Runway Use Report

Chicago O'Hare International Airport

Period: July 2008

Time of Day: 10:00 p.m. to 7:00 a.m.



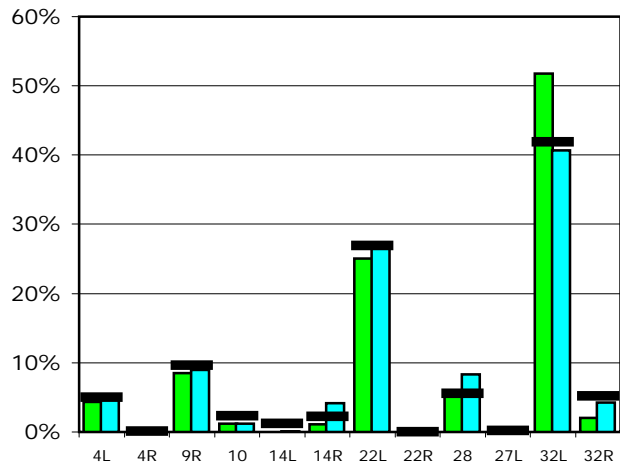
## Runway Use (10 p.m. to 7 a.m.)

Source: Airport Noise Management System (ANMS)

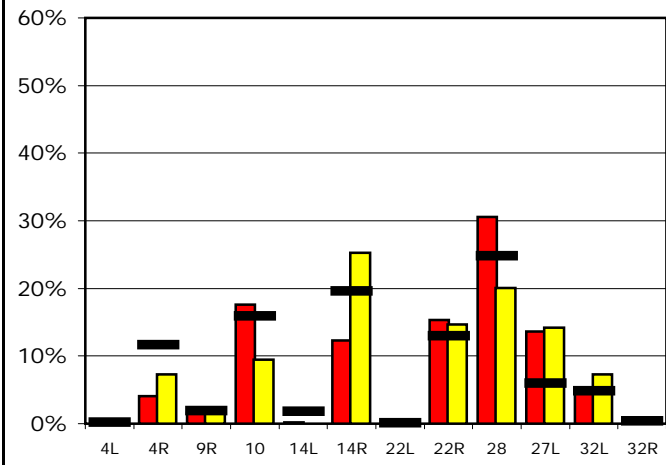
### Runway Utilization

		4L	4R	9R	10	14L	14R	22L	22R	28	27L	32L	32R
<b>Average Daily Departures</b>													
July 2008	<span style="color: green;">■</span>	5	0	10	1	0	1	29	0	7	0	59	2
June 2008	<span style="color: cyan;">■</span>	7	0	12	2	0	6	36	0	11	0	54	6
12 Month Avg.	<span style="color: black;">■</span>	6	0	11	3	1	2	30	0	6	0	47	6
<b>Average Daily Arrivals</b>													
July 2008	<span style="color: red;">■</span>	0	6	2	25	0	18	0	22	44	19	6	0
June 2008	<span style="color: yellow;">■</span>	0	11	3	15	0	39	0	23	31	22	11	0
12 Month Avg.	<span style="color: black;">■</span>	0	17	3	23	2	28	0	18	35	9	7	1

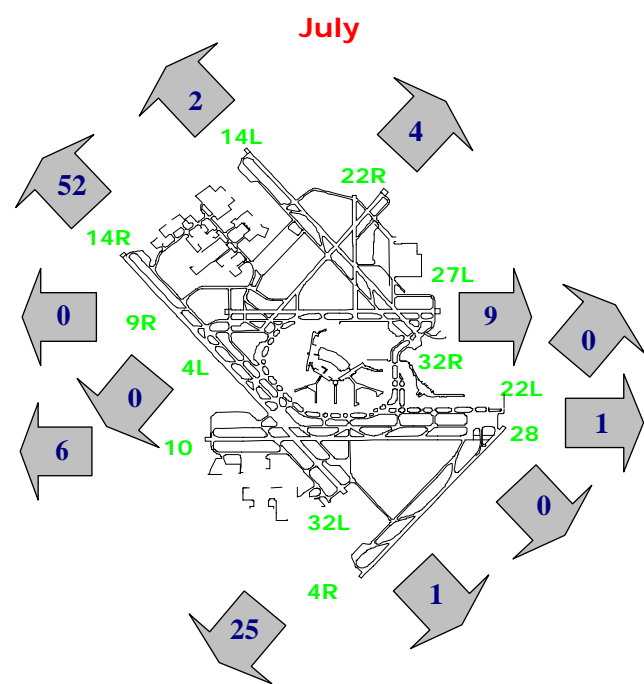
### Departures (10 p.m. to 7 a.m.)



### Arrivals (10 p.m. to 7 a.m.)



### Percentage Departure Utilization



### Percentage Arrival Utilization

