

Runway Use Report

Chicago O'Hare International Airport

Period: January 2010

Time of Day: All hours



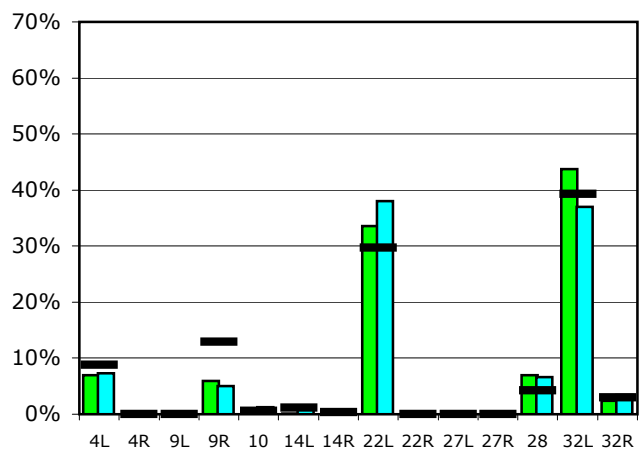
Runway Use (All hours)

Source: Airport Noise Management System (ANMS)

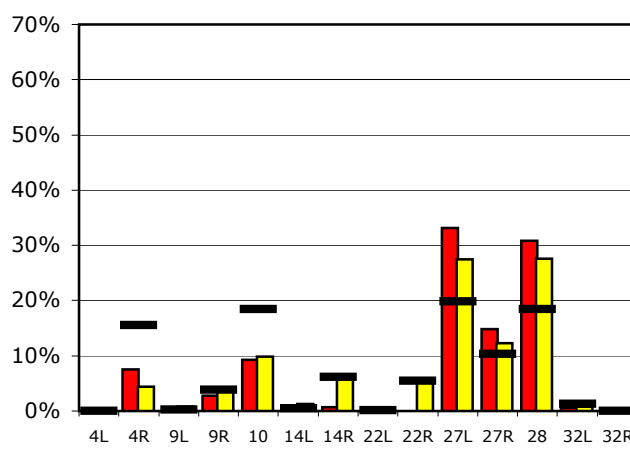
Runway Utilization

	4L	4R	9L	9R	10	14L	14R	22L	22R	27L	27R	28	32L	32R	
Average Daily Departures															
January 2010	67	0	0	58	4	1	0	325	0	0	0	67	424	23	
December 2009	68	0	0	47	11	9	3	352	0	1	0	61	342	32	
12 Month Avg.	90	1	0	131	6	12	3	304	0	0	0	43	401	31	
Average Daily Arrivals															
January 2010	0	80	0	30	97	3	8	0	0	350	156	325	6	0	
December 2009	0	46	8	38	102	13	66	0	57	285	128	286	9	0	
12 Month Avg.	0	172	2	43	203	5	68	2	60	219	114	204	14	0	

Departures (All hours)

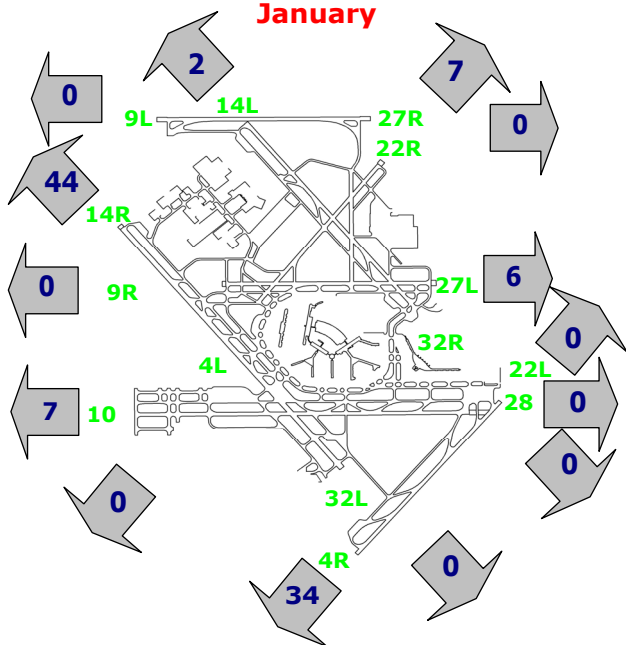


Arrivals (All hours)



Percentage Departure Utilization

January



Percentage Arrival Utilization

January

