

# Runway Use Report

Chicago O'Hare International Airport

Period: January 2010

Time of Day: 10:00 p.m. to 7:00 a.m.



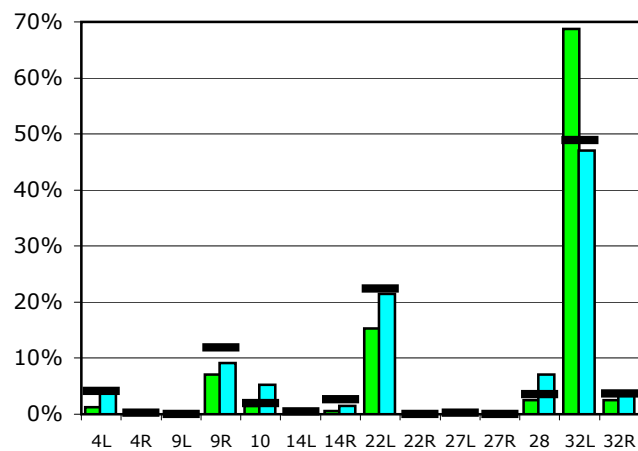
## Runway Use (10 p.m. to 7 a.m.)

Source: Airport Noise Management System (ANMS)

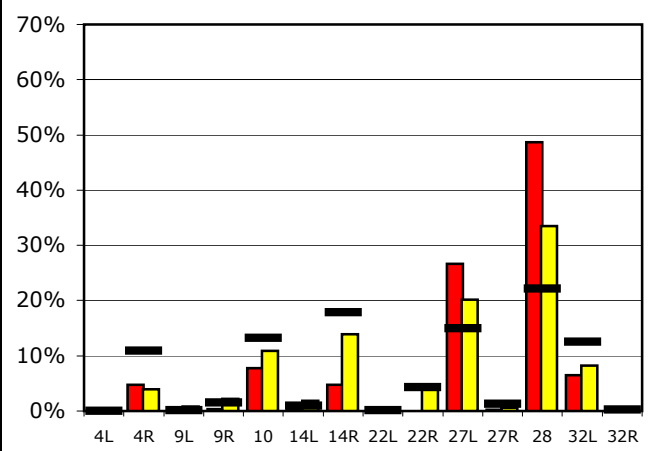
### Runway Utilization

	4L	4R	9L	9R	10	14L	14R	22L	22R	27L	27R	28	32L	32R	
<b>Average Daily Departures</b>															
January 2010	1	0	0	5	1	0	0	11	0	0	0	2	50	2	
December 2009	4	0	0	7	4	0	1	18	0	0	0	6	38	3	
12 Month Avg.	3	0	0	10	2	0	2	18	0	0	0	3	40	3	
<b>Average Daily Arrivals</b>															
January 2010	0	5	0	0	8	0	5	0	0	26	0	47	6	0	
December 2009	0	4	1	2	11	2	15	0	4	21	1	35	9	0	
12 Month Avg.	0	12	0	2	15	1	20	0	5	17	1	25	14	0	

## Departures (10 p.m. to 7 a.m.)

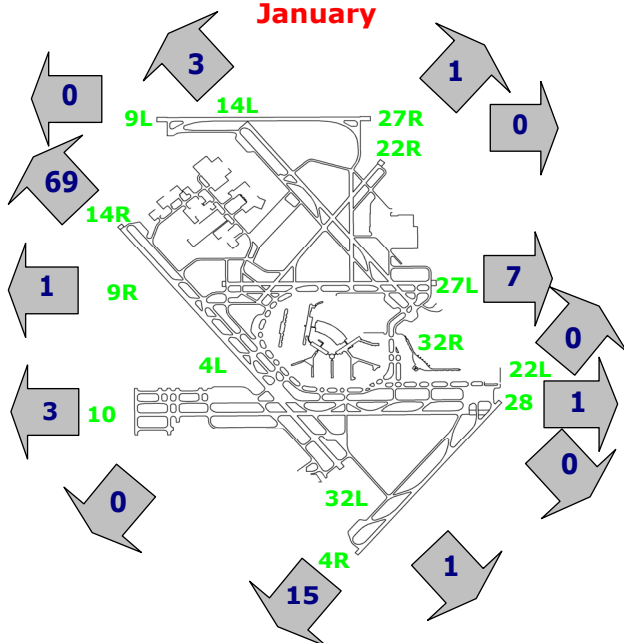


## Arrivals (10 p.m. to 7 a.m.)



## Percentage Departure Utilization

January



## Percentage Arrival Utilization

January

