

Fly Quiet Adherence Report
4th Quarter 2004



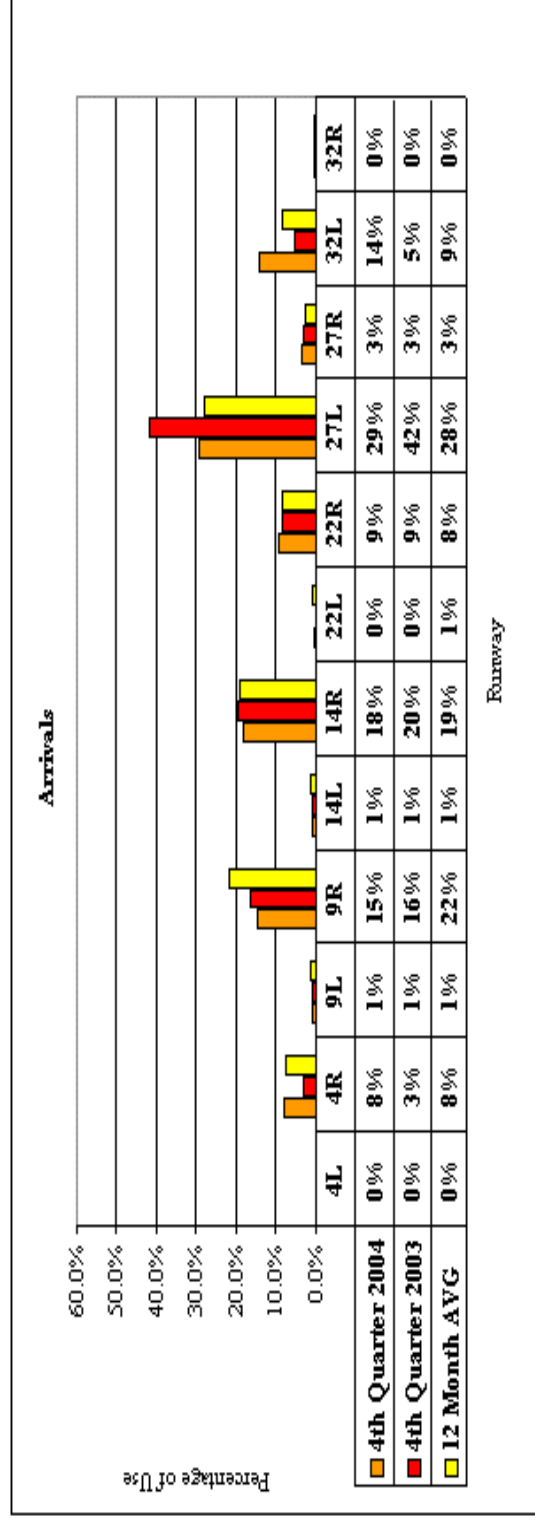
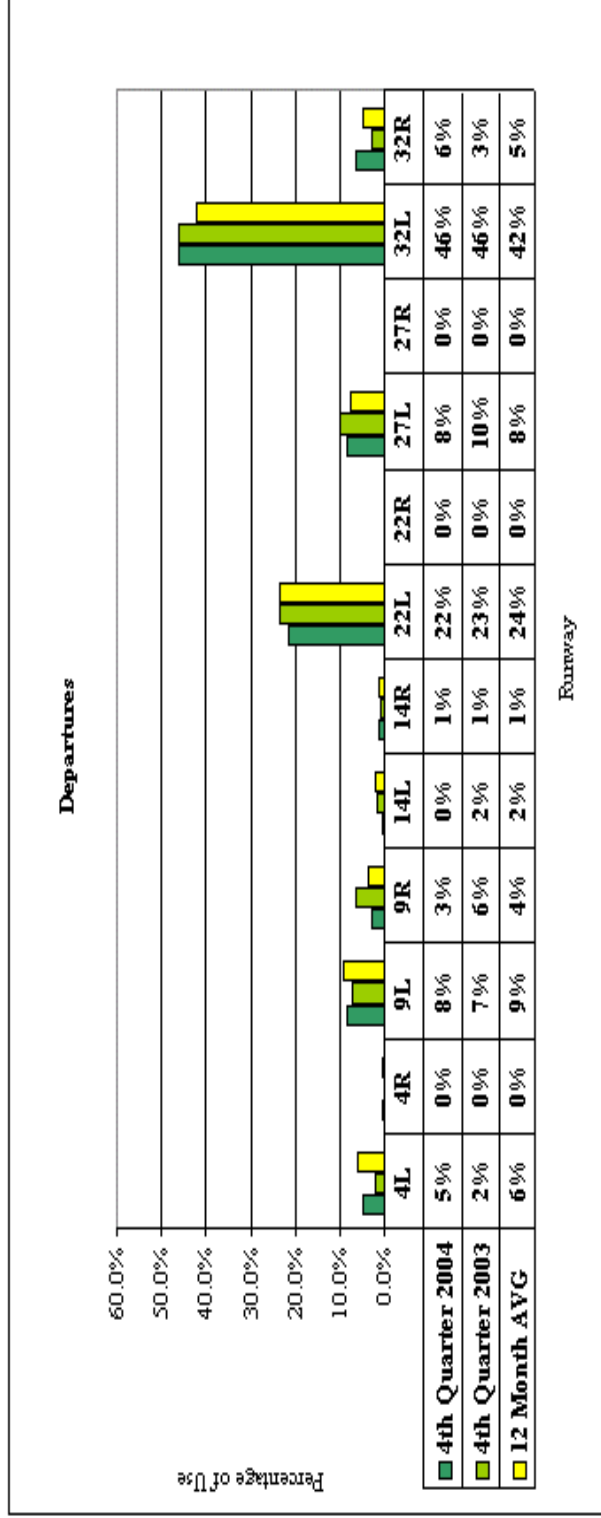
Chicago O'Hare International Airport

Visit the Community Resource Center on the Internet at
<http://www.flychicago.org>



**Chicago O'Hare International Airport
Period: 4th Quarter 2004**

Quarterly Nighttime Runway Use (10 p.m. to 7 a.m.)



Source: Chicago Airport Noise Monitoring System



Quarterly Aircraft Ground Run-ups

Chicago O'Hare International Airport
Period: 4th Quarter 2004

All Airlines - Run-ups

Location	4thQuarter 2004		4thQuarter 2003		12 Month Avg. ¹	
	Run-ups	Percentage	Run-ups	Percentage	Run-ups	Percentage
GRE	160	74%	131	73%	126	71%
9R Hold Pad	51	24%	48	27%	48	27%
32L Hold Pad	5	2%	1	1%	3	2%
Total	216	100%	180	100%	177	100%

Location	4thQuarter 2004		4thQuarter 2003		12 Month Avg. ¹	
	Run-ups	Percentage	Run-ups	Percentage	Run-ups	Percentage
GRE	77	83%	51	89%	50	79%
9R Hold Pad	13	14%	6	11%	12	19%
32L Hold Pad	3	3%	0	0%	1	2%
Total	93	100%	57	100%	63	100%

Location	4thQuarter 2004		4thQuarter 2003		12 Month Avg. ¹	
	Run-ups	Percentage	Run-ups	Percentage	Run-ups	Percentage
GRE	12	100%	35	100%	14	93%
9R Hold Pad	0	0%	0	0%	1	7%
32L Hold Pad	0	0%	0	0%	0	0%
Total	12	100%	35	100%	15	100%

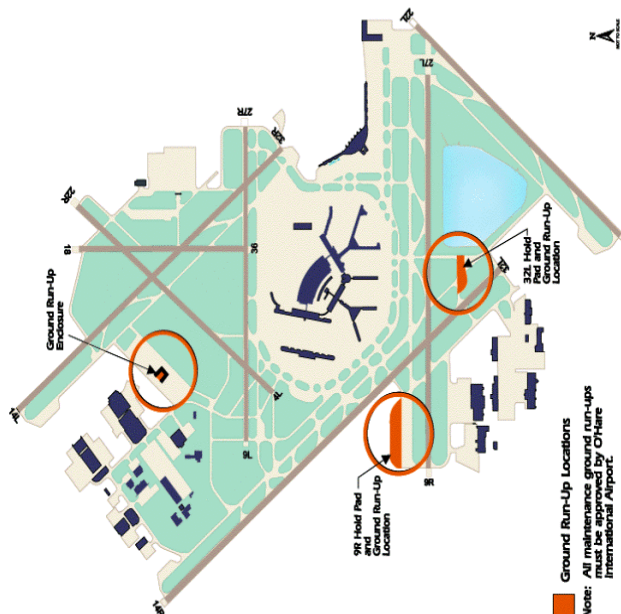
Location	4thQuarter 2004		4thQuarter 2003		12 Month Avg. ¹	
	Run-ups	Percentage	Run-ups	Percentage	Run-ups	Percentage
GRE	27	49%	25	57%	27	52%
9R Hold Pad	28	51%	19	43%	24	46%
32L Hold Pad	0	0%	0	0%	1	2%
Total	55	100%	44	100%	52	100%

Location	4thQuarter 2004		4thQuarter 2003		12 Month Avg. ¹	
	Run-ups	Percentage	Run-ups	Percentage	Run-ups	Percentage
GRE	20	67%	18	50%	20	67%
9R Hold Pad	9	30%	18	50%	9	30%
32L Hold Pad	1	3%	0	0%	1	3%
Total	30	100%	36	100%	30	100%

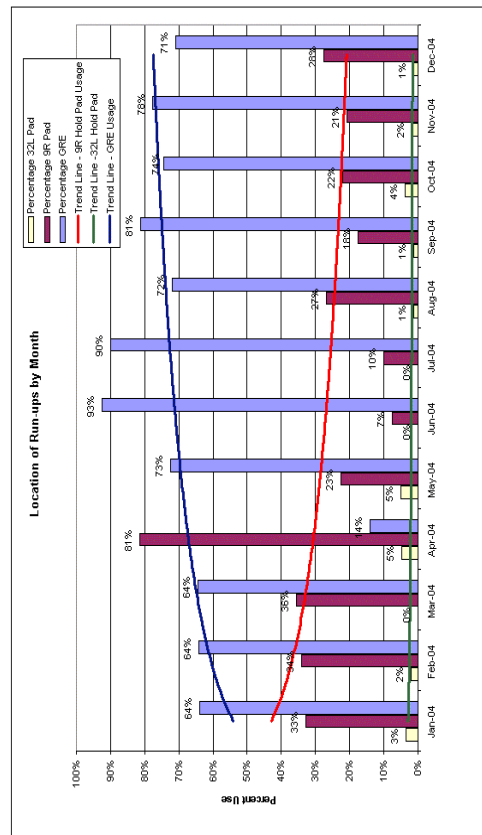
Location	4thQuarter 2004		4thQuarter 2003		12 Month Avg. ¹	
	Run-ups	Percentage	Run-ups	Percentage	Run-ups	Percentage
GRE	24	92%	2	25%	15	88%
9R Hold Pad	1	4%	5	63%	2	12%
32L Hold Pad	1	4%	1	13%	0	0%
Total	26	100%	8	100%	17	100%

1. 12 Month Average equals the average of 1Q 2004, 2Q 2004, 3Q 2004 and 4Q 2004.

Source: Chicago Department of Aviation, Ground Run-up Logs



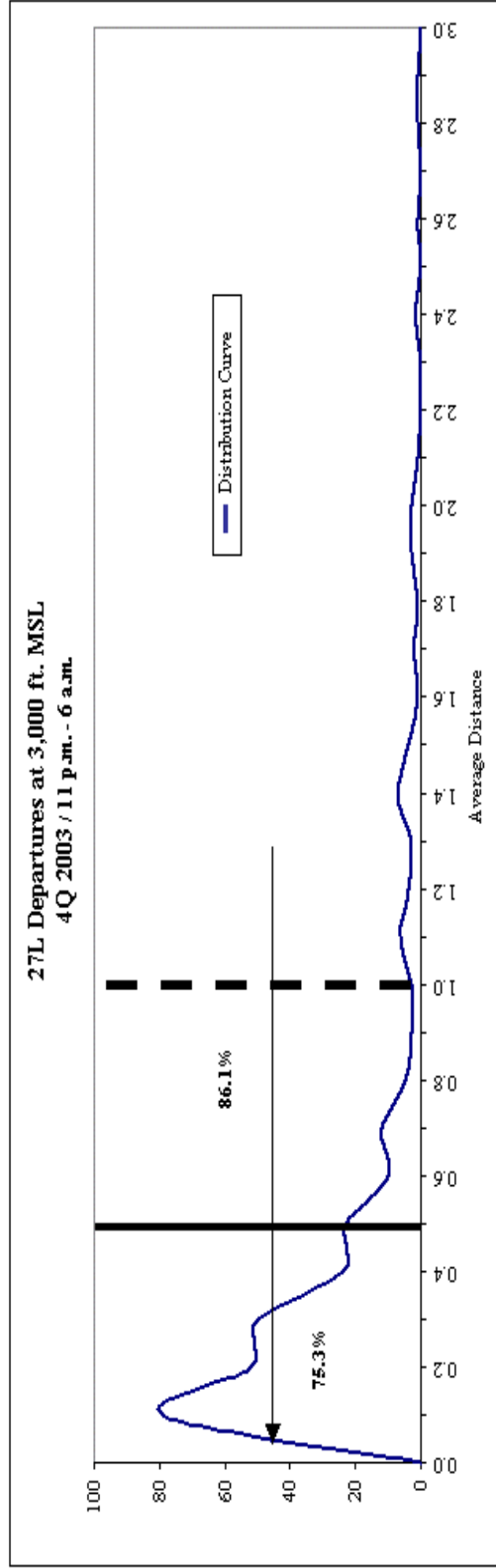
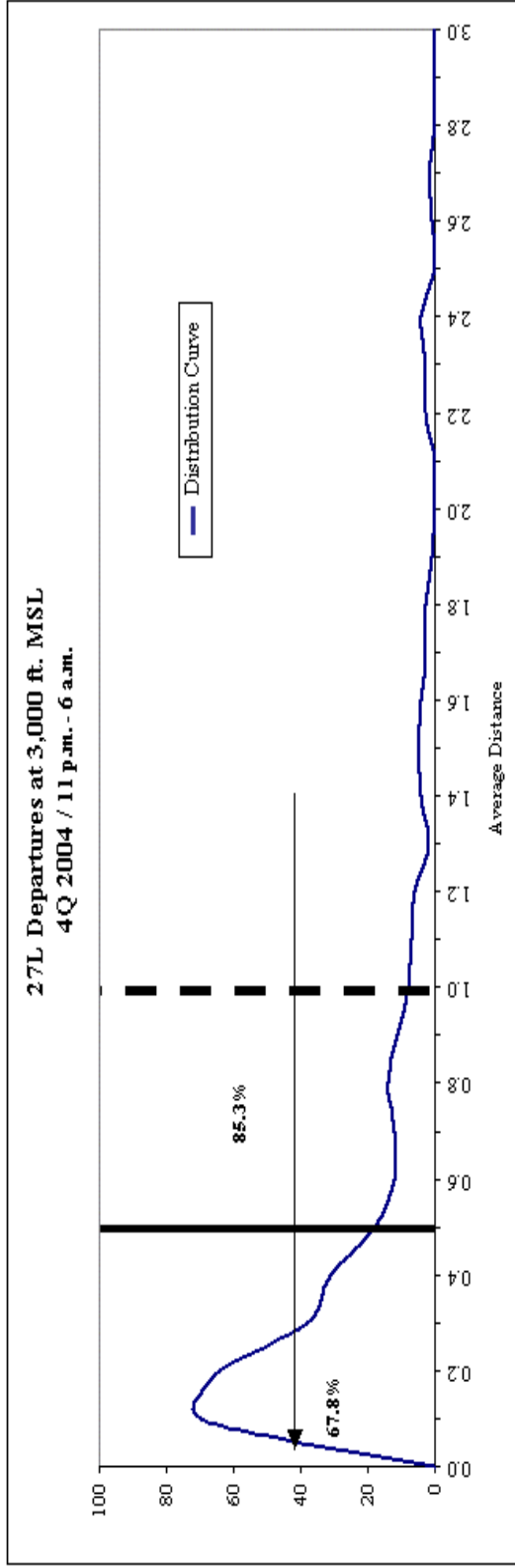
Ground Run-Up Locations
Note: All maintenance ground run-ups must be approved by O'Hare International Airport.





Airline	4th Quarter 2004 11 p.m. - 6 a.m.		4th Quarter 2003 11 p.m. - 6 a.m.	
	Departures	Average Distance	Departures	Average Distance
American Airlines	45	0.58	21	0.50
Asiana Airlines	3	0.08	3	0.44
Airborne Express	13	0.35	14	0.51
Air France	2	1.78	10	0.24
Air Jamaica Limited	--	--	--	--
America West Airlines	--	--	1	1.01
United Express	18	1.13	18	1.66
Continental Express	--	--	--	--
Chautauqua/United Express	7	1.01	1	0.33
China Cargo Airlines	--	--	3	0.10
Cathay Pacific	4	0.36	4	0.61
CTT	3	1.31	1	2.78
DHL	17	0.34	9	0.50
Lufthansa German Airlines	1	0.45	4	0.24
American Eagle	19	0.38	4	1.16
Eva Air	--	--	--	--
Federal Express	24	0.39	42	0.30
USA 3000 Airlines	3	0.60		0.00
Japan Air Lines	4	0.26	6	0.29
Korean Air	7	0.25	10	0.20
Trans States/United Express	7	0.64	--	--
TACA	17	0.55		--
Mexicana	39	0.33	39	0.32
Nippon Cargo Airlines	--	--	4	0.11
Northwest Airlines	8	0.22	11	0.33
Polar Air Cargo	8	0.20	21	0.17
SkyWest/United Express	13	0.70	--	--
United Airlines	20	0.60	13	0.40
UPS	8	0.55	13	0.19
USAirways	8	0.29	--	--
Overall	298	0.56	252	0.54

Preferential Flight Track Summary
 Runway 27L Departures



Nighttime Hours 11 p.m. to 6 a.m.: In 4Q 2004, 67.8% of departures were within 1/2 nautical mile and 85.3% were within 1 nautical mile of the preferred flight track.
 In 4Q 2003, 75.3% of departures were within 1/2 nautical mile and 86.1% were within 1 nautical mile of the preferred flight track.

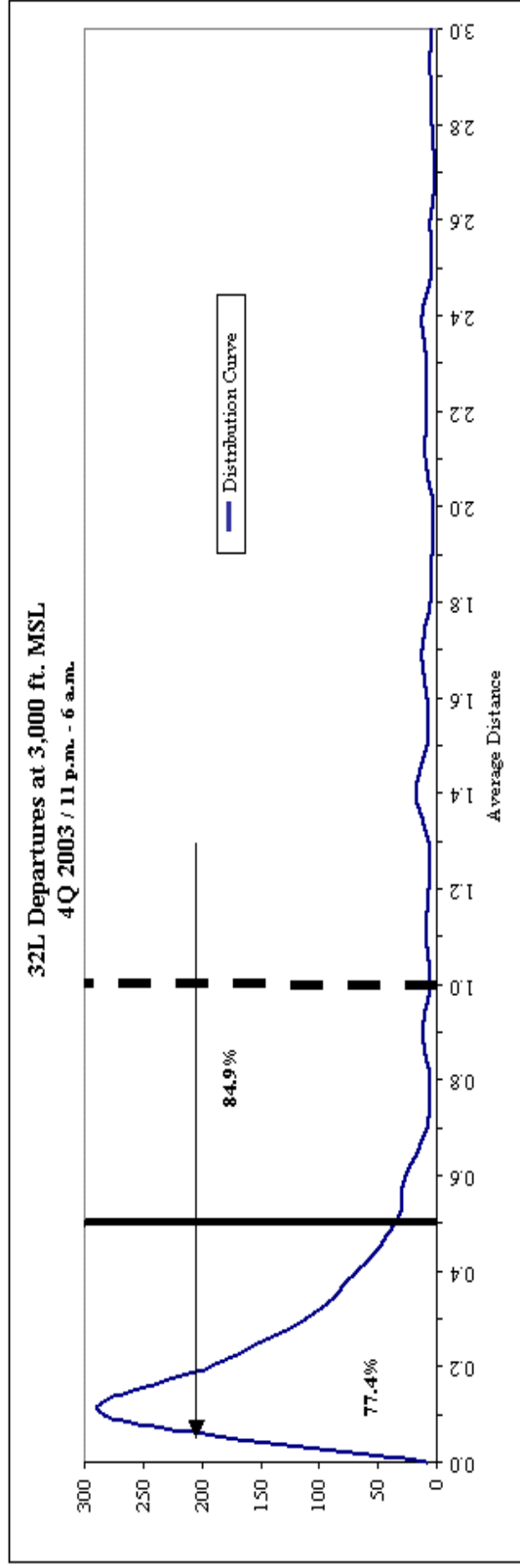
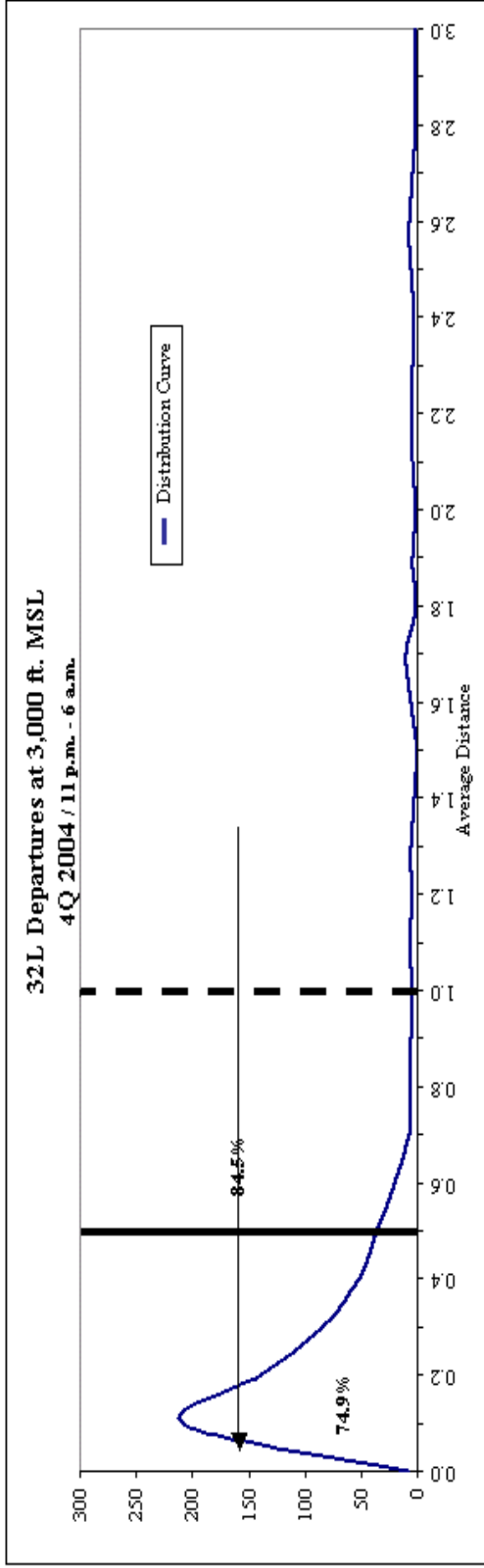


Airline	4th Quarter 2004 11 p.m. - 6 a.m.	
	Departures	Average Distance
American Airlines	128	0.63
Asiana Airlines	22	0.15
Airborne Express	31	0.48
Air France	52	0.68
Air Jamaica Limited	--	--
America West Airlines	6	0.74
United Express	54	0.48
Continental Express	--	--
Chautauqua/United Express	13	0.51
China Cargo Airlines	17	0.19
Cathay Pacific	31	0.37
CTT	24	0.35
DHL	23	0.44
Lufthansa German Airlines	24	0.20
American Eagle	25	0.50
Eva Air	15	0.07
Federal Express	224	0.49
USA 3000 Airlines	4	0.24
Japan Air Lines	50	0.17
Korean Air	41	0.18
Trans States/United Express	36	0.84
TACA	11	0.45
Mexicana	44	0.37
Nippon Cargo Airlines	30	0.19
Northwest Airlines	75	0.15
Polar Air Cargo	48	0.20
SkyWest/United Express	25	0.93
United Airlines	137	0.83
UPS	28	0.45
USAirways	29	0.55
Overall	1247	0.42

4th Quarter 2003 11 p.m. - 6 a.m.	
Departures	Average Distance
128	0.88
22	0.19
31	0.21
52	0.62
--	--
5	0.86
54	0.99
--	--
--	--
7	0.12
25	0.29
5	0.21
24	0.15
18	0.26
34	1.02
--	--
156	0.31
--	--
24	0.16
27	0.11
--	--
--	--
27	0.29
23	0.18
54	0.21
61	0.17
--	--
53	0.95
56	0.15
1	0.06
887	0.38



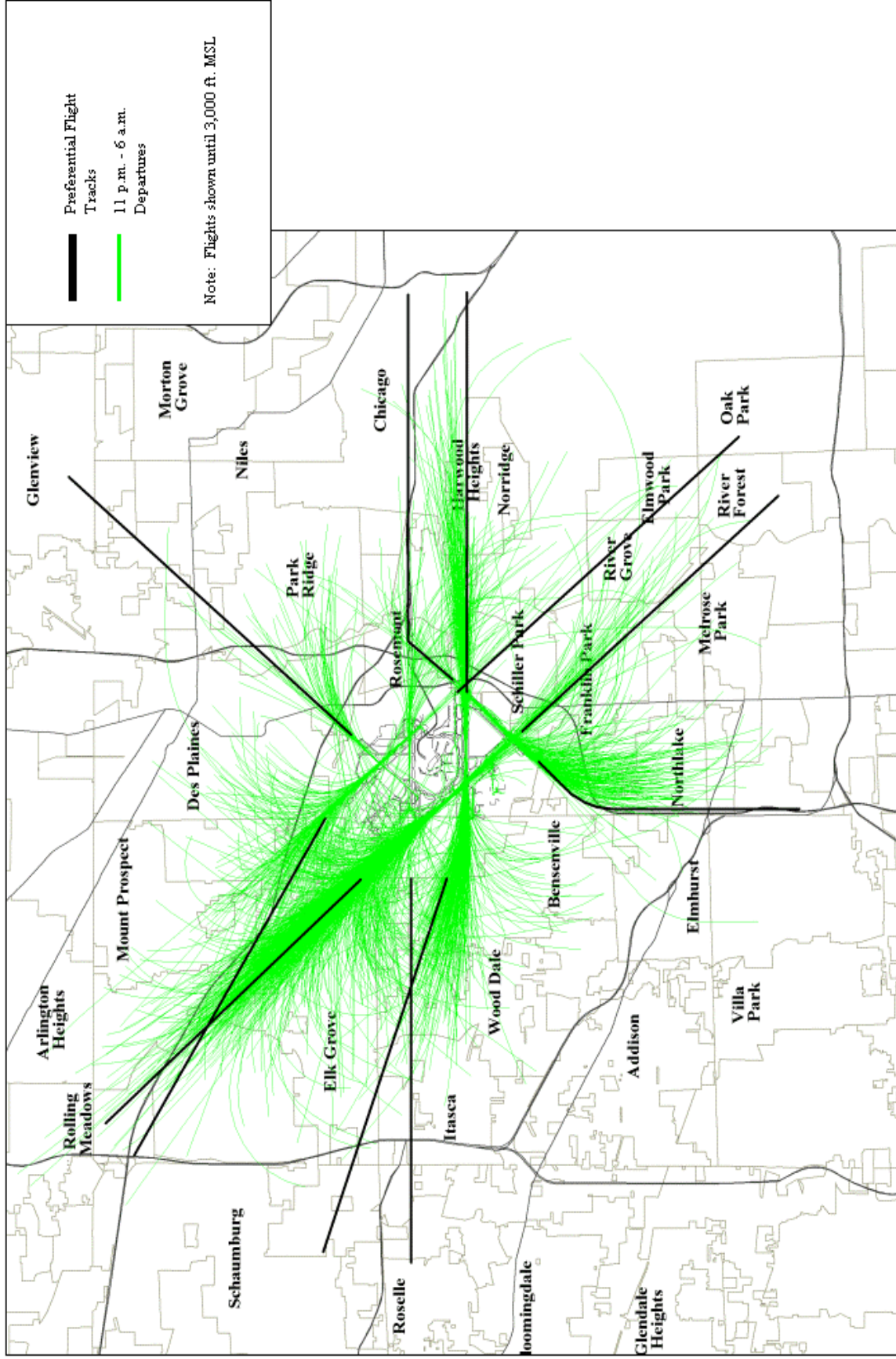
Chicago O'Hare International Airport Preferential Flight Track Summary
 Period: 4th Quarter 2004 Runway 32L Departures



Fly Quiet Mode Hours: In 4Q 2004, 74.9% of departures were within 1/2 nautical mile and 84.5% were within 1 nautical mile of the preferred flight track.
 In 3Q 2003, 77.4% of departures were within 1/2 nautical mile and 84.9% were within 1 nautical mile of the preferred flight track.

**Chicago O'Hare International Airport
Period: 4th Quarter 2004**

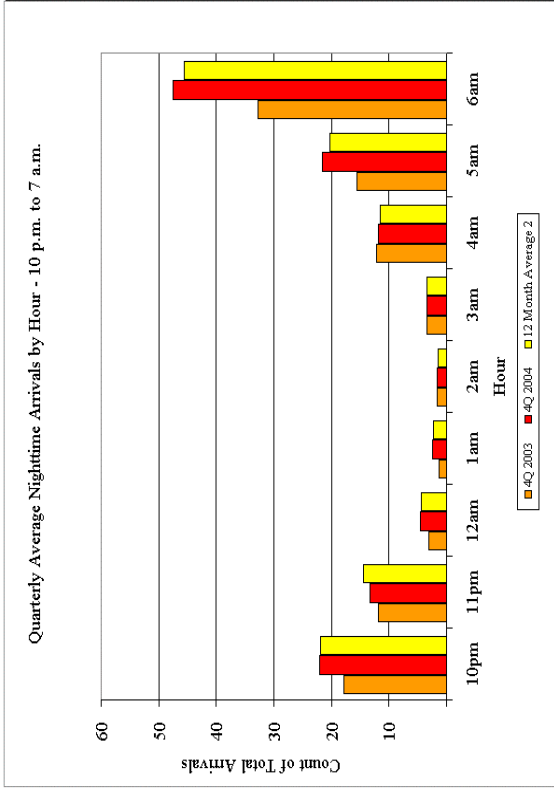
Nighttime Preferential Flight Track Compliance (11 p.m. - 6 a.m.)





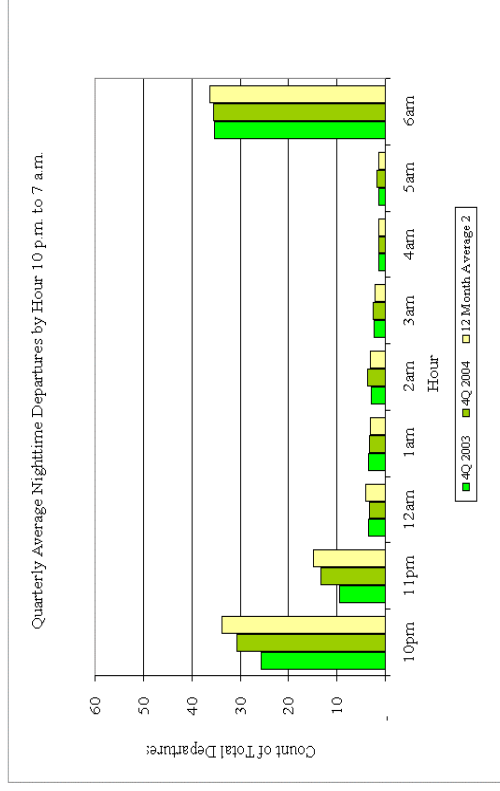
Arrivals

Quarter	Quarterly Average Nighttime Arrivals by Hour - 10 p.m. to 7 a.m.											Total*	Stage 3 Jets
	10pm	11pm	12am	1am	2am	3am	4am	5am	6am	7am	8am		
4Q 2003	18	12	3	1	2	3	12	16	33	99	100%		
1Q 2004	21	12	4	1	1	3	10	16	36	105	100%		
2Q 2004	23	17	5	2	1	3	11	20	46	129	100%		
3Q 2004	22	15	5	3	2	3	13	23	53	139	100%		
4Q 2004	22	13	5	2	2	3	12	22	47	128	100%		
12 Month Average ²	22	14	4	2	1	3	12	20	46	125	100%		



Departures

Quarter	Quarterly Average Nighttime Departures by Hour - 10 p.m. to 7 a.m.											Total*	Stage 3 Jets
	10pm	11pm	12am	1am	2am	3am	4am	5am	6am	7am	8am		
4Q 2003	26	9	3	3	3	2	1	1	35	85	100%		
1Q 2004	32	14	3	3	3	2	1	1	35	94	100%		
2Q 2004	37	17	5	3	3	2	1	1	36	106	100%		
3Q 2004	35	16	4	2	3	3	2	1	39	105	100%		
4Q 2004	31	13	3	3	4	2	1	2	35	95	100%		
12 Month Average ²	34	15	4	3	3	2	1	1	36	100	100%		



1. Data Represents Total Operations Per Quarter as measured by Airport Noise Monitoring System

2. 12 Month Average equals the average of 1Q 2004, 2Q 2004, 3Q 2004 and 4Q 2004.

* Totals may not add due to rounding.

Source: Chicago Airport Noise Monitoring System



Quarterly Nighttime Noise Complaints (10 p.m. to 7 a.m.)

Community	# of Complaints			Percentage of Complaints			# of Callers			Percentage of Callers		
	4th Quarter 2004	4th Quarter 2003	12 Month Avg. 2	4th Quarter 2004	4th Quarter 2003	12 Month Avg. 2	4th Quarter 2004	4th Quarter 2003	12 Month Avg. 2	4th Quarter 2004	4th Quarter 2003	12 Month Avg. 2
Arlington Heights	4	13	3	2%	1%	1%	3	6	3	3%	4%	2%
Beansville	1	6	6	0%	0%	2%	1	4	4	1%	3%	3%
Bloomington	0	0	0	0%	0%	0%	0	0	0	0%	0%	0%
Carol Stream	0	0	0	0%	0%	0%	0	0	0	0%	0%	0%
Chicago	26	43	33	11%	3%	10%	12	21	18	0%	16%	13%
Des Plaines	32	21	35	14%	3%	11%	13	13	13	13%	10%	9%
Downers Grove	1	4	3	0%	0%	1%	1	1	2	1%	1%	1%
Elk Grove Village	3	22	15	1%	1%	5%	3	14	9	3%	10%	6%
Elmhurst	8	2	15	3%	2%	5%	7	2	10	7%	1%	7%
Elmwood Park	0	11	8	0%	0%	2%	0	1	2	0%	1%	1%
Franklin Park	15	15	15	6%	2%	5%	9	10	10	9%	7%	7%
Gary, IN	15	20	8	6%	0%	2%	1	2	1	1%	1%	1%
Glenview	0	1	0	0%	0%	0%	0	1	0	0%	1%	0%
Harwood Heights	46	107	69	19%	2%	21%	7	11	13	7%	8%	9%
Hillside	16	22	14	7%	1%	4%	2	2	2	2%	1%	1%
Hinsdale	0	0	0	0%	0%	0%	0	0	0	0%	0%	0%
Hoffman Estates	0	0	0	0%	0%	0%	0	0	0	0%	0%	0%
Inverness	0	0	0	0%	0%	0%	0	0	0	0%	0%	0%
Itasca	2	0	2	1%	1%	0%	2	0	2	2%	0%	1%
Lake Zurich	0	1	0	0%	0%	0%	0	1	0	0%	1%	0%
Lombard	2	1	2	1%	0%	1%	1	1	2	1%	1%	1%
Meinah	0	0	0	0%	0%	0%	0	0	0	0%	0%	0%
Melrose Park	11	11	19	5%	1%	6%	2	7	4	2%	5%	3%
Mount Prospect	0	0	2	0%	0%	1%	0	0	2	0%	0%	1%
Niles	0	0	2	0%	0%	1%	0	0	1	0%	0%	1%
Norridge	4	5	8	2%	1%	2%	3	2	4	3%	1%	3%
Northlake	3	0	2	1%	0%	1%	1	0	1	1%	0%	1%
Oak Park	2	1	1	1%	0%	0%	1	1	1	1%	1%	1%
Palatine	3	1	4	1%	1%	1%	2	1	3	2%	1%	2%
Park Ridge	18	36	19	8%	4%	6%	14	12	13	14%	9%	10%
River Forest	0	0	1	0%	0%	0%	0	0	1	0%	0%	1%
River Grove	0	0	0	0%	0%	0%	0	0	0	0%	0%	0%
Rolling Meadows	10	7	9	4%	1%	3%	2	2	3	2%	1%	2%
Roselle	0	4	3	0%	0%	1%	0	3	2	0%	2%	2%
Rosemont	0	0	0	0%	0%	0%	0	0	0	0%	0%	0%
Schaumburg	0	1	1	0%	0%	0%	0	1	0	0%	1%	0%
Schiller Park	1	5	2	0%	0%	1%	1	3	2	1%	2%	1%
Wood Dale	0	7	9	0%	0%	3%	0	2	5	0%	1%	4%
Other 1	14	15	14	6%	2%	4%	9	10	9	9%	7%	6%
Total	237	382	322	100%	100%	25%	97	134	139	100%	100%	100%

1. Other: Alsopwood, Morton Grove, St. Charles, Stone Park, Villa Park.
2. 12 Month Average equals average of 10/2004, 20/2004, 30/2004 and 40/2004.
Source: Chicago Airport Noise Monitoring System

**Chicago O'Hare International Airport
Period: 4th Quarter 2004**

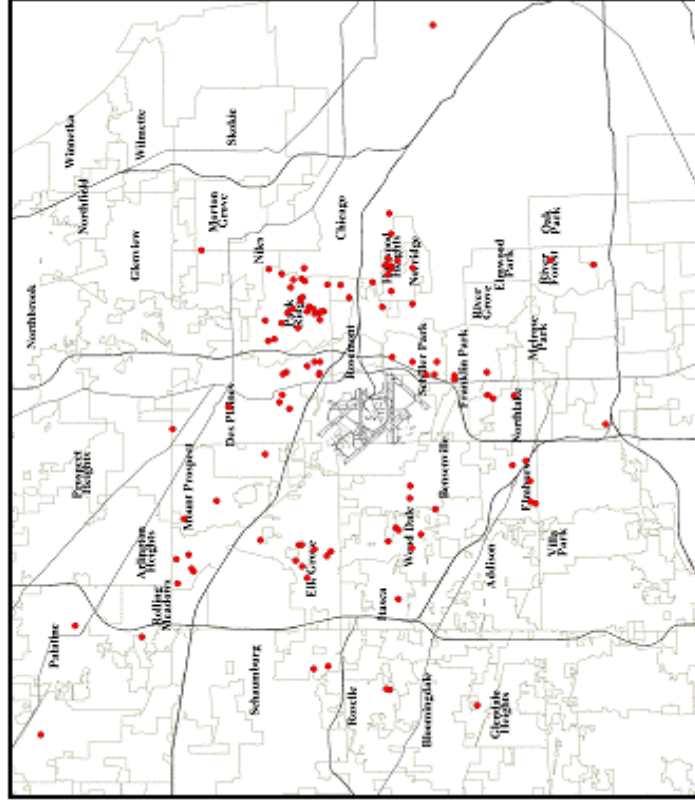
Quarterly Nighttime Noise Complaint Locations (10 p.m. to 7 a.m.)



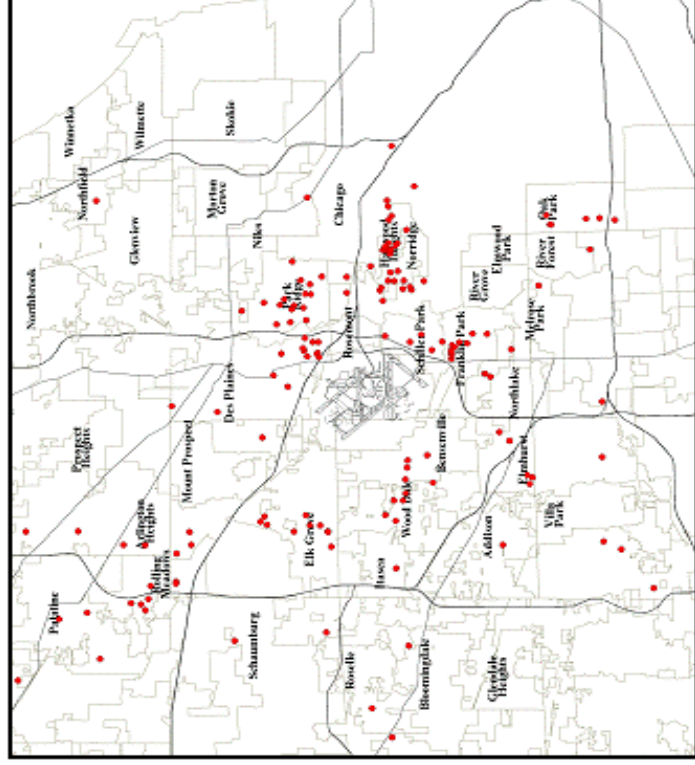
Legend

- Location of Nighttime Noise Complaints

4th Quarter 2004 Nighttime Complaint Locations:



4th Quarter 2003 Nighttime Complaint Locations:



Note: Not all callers are located due to lack of address information or are located outside the extent of the map.

Chicago O'Hare International Airport

Period: 4th Quarter 2004

Noise Monitor	Community	4th Quarter 2004		4th Quarter 2003		12 Month Average	
		Aircraft Leq ¹	Community Leq ¹	Aircraft Leq ¹	Community Leq ¹	Aircraft Leq ¹	Community Leq ¹
1	Arlington Heights	53.8	56.1	53.3	53.1	53.2	55.3
2	Melrose Park	48.1	56.2	48.4	54.7	48.0	55.2
3	Bensenville	51.7	58.2	50.8	58.2	53.0	58.5
4	Schiller Park	50.1	56.7	48.6	55.7	50.0	57.0
5	Chicago	48.3	54.1	48.6	56.3	48.5	55.0
6	Chicago	47.4	52.1	46.7	51.6	47.2	52.3
7	Des Plaines	51.2	55.6	48.1	54.1	49.9	54.5
8	Des Plaines	54.4	58.4	51.8	54.9	53.9	57.1
9	Des Plaines	58.6	61.4	60.5	68.7	57.0	59.8
10	Rolling Meadows	53.0	56.3	52.4	55.7	52.3	55.7
11	Chicago	48.0	53.9	47.7	54.3	49.8	55.2
12	Elk Grove	50.8	52.5	51.3	51.8	57.5	74.1
13	Elk Grove	66.8	67.9	66.6	61.6	66.3	66.3
14	Elk Grove	56.8	58.3	56.7	53.8	56.5	57.1
15	Franklin Park	52.0	56.9	48.7	56.0	51.2	56.3
16	Franklin Park	62.7	68.2	59.1	64.6	61.2	67.1
17	Harwood Heights	58.4	59.8	58.7	56.6	57.8	59.2
19	Stone Park	50.7	57.3	49.0	56.1	50.6	57.2
20	Mount Prospect	53.4	55.2	51.5	54.2	52.8	54.8
21	Mount Prospect	47.8	50.7	47.0	51.7	47.5	50.3
22	Norridge	60.7	61.4	60.0	56.8	59.6	61.1
23	Northlake	56.4	59.5	55.7	56.3	56.1	58.6
24	Park Ridge	46.8	51.5	45.2	54.0	47.0	51.5
25	Park Ridge	49.9	55.2	47.4	53.2	49.6	54.5
26	Park Ridge	46.8	51.3	44.7	50.2	47.7	51.4
27	Rosemont	56.5	62.5	54.5	60.8	55.8	61.7
28	Schiller Park	70.6	71.6	71.1	64.3	70.6	70.7
32	Wood Dale	55.7	60.6	55.6	56.4	56.5	60.9
34	Elk Grove	49.4	52.8	49.7	53.0	49.0	52.3
35	Unincorp. Cook	54.6	58.8	50.9	54.4	52.5	56.7
37	Mount Prospect	45.3	51.6	44.9	64.2	45.8	50.9

1. Leq (Equivalent Sound Level): The average sound energy level during a stated period of time.
Red represents an increase of 1 dB or more from same quarter previous year (13 monitors). **Green** represents a decrease of 1dB or more from same quarter previous year (1 monitor).
Source: Chicago Airport Noise Monitoring System