

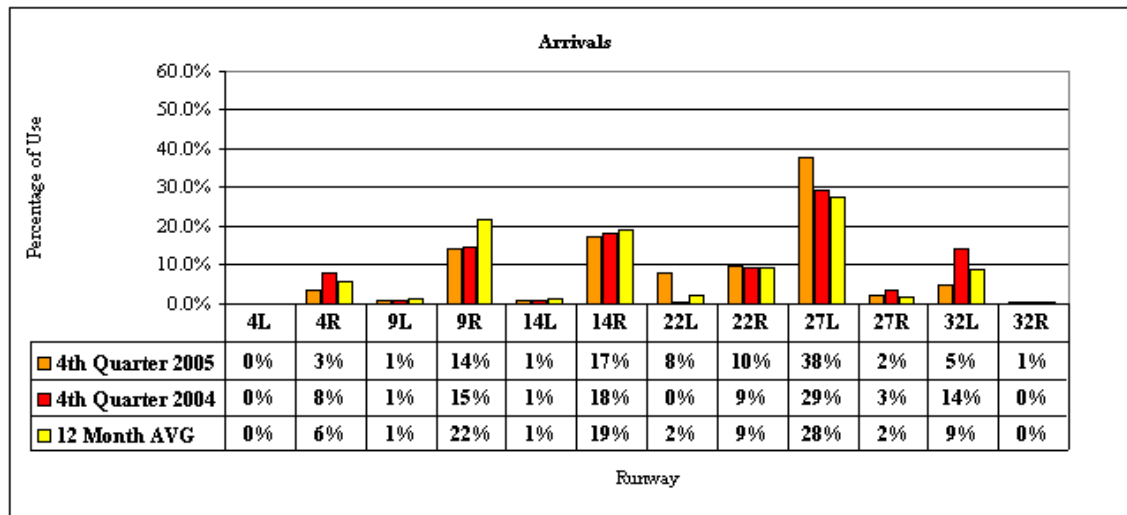
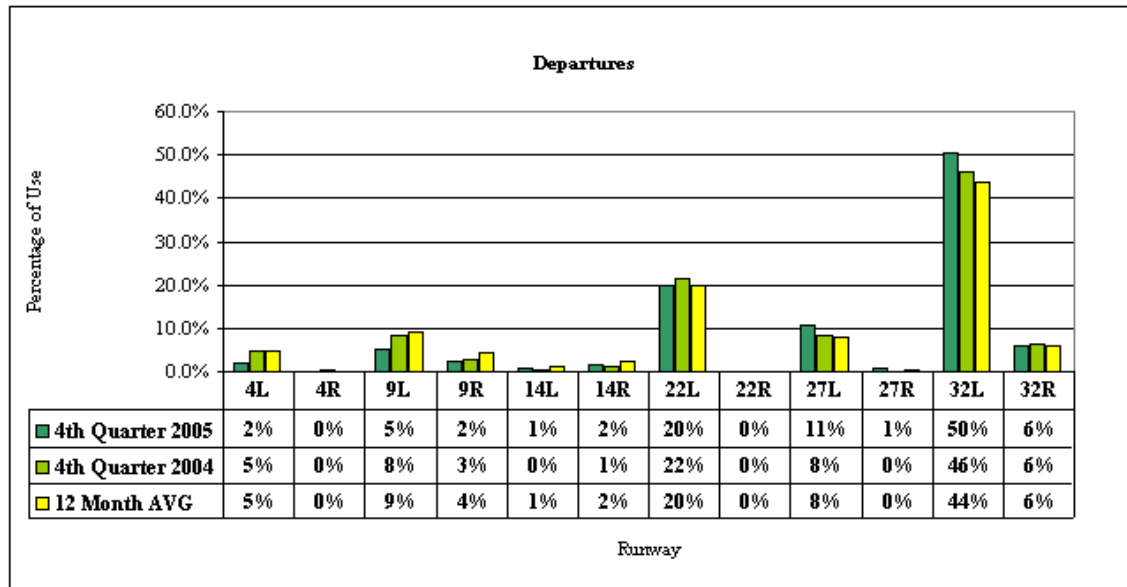
*Fly Quiet Adherence Report
4th Quarter 2005*

Chicago O'Hare International Airport



City of Chicago Department of Aviation

*Visit the Community Resource Center on the Internet at
<http://www.chicagoairports.com>*



Source: Chicago Airport Noise Monitoring System



All Airlines - Run-ups

Location	4th Quarter 2005		4th Quarter 2004		12 Month Avg. ¹	
	Run-ups	Percentage	Run-ups	Percentage	Run-ups	Percentage
GRE	146	80%	160	74%	170	77%
9R Hold Pad	36	20%	51	24%	49	22%
32L Hold Pad	0	0%	5	2%	3	1%
Total	182	100%	216	100%	222	100%

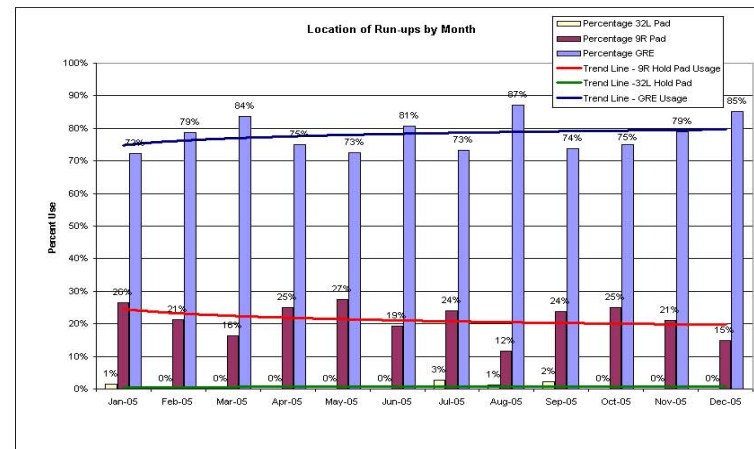
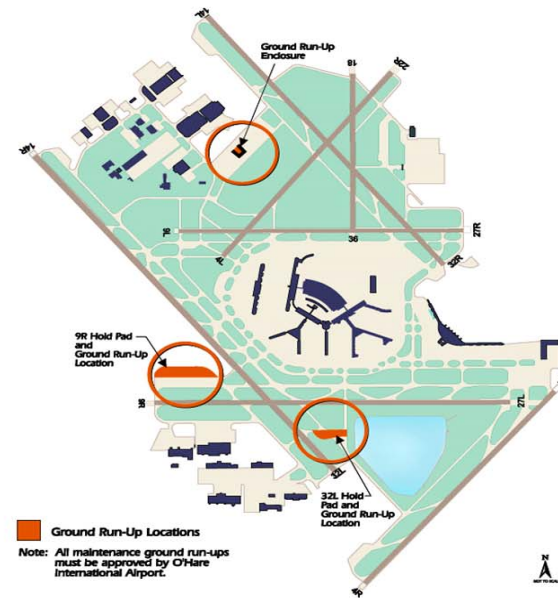
Location	4th Quarter 2005		4th Quarter 2004		12 Month Avg. ¹	
	Run-ups	Percentage	Run-ups	Percentage	Run-ups	Percentage
AA American	53	78%	77	83%	69	81%
9R Hold Pad	15	22%	13	14%	15	18%
32L Hold Pad	0	0%	3	3%	1	1%
Total	68	100%	93	100%	85	100%

Location	4th Quarter 2005		4th Quarter 2004		12 Month Avg. ¹	
	Run-ups	Percentage	Run-ups	Percentage	Run-ups	Percentage
American Eagle	23	100%	12	100%	15	94%
9R Hold Pad	0	0%	0	0%	1	6%
32L Hold Pad	0	0%	0	0%	0	0%
Total	23	100%	12	100%	16	100%

Location	4th Quarter 2005		4th Quarter 2004		12 Month Avg. ¹	
	Run-ups	Percentage	Run-ups	Percentage	Run-ups	Percentage
nwa NORTHWEST AIRLINES	35	73%	27	49%	36	67%
9R Hold Pad	13	27%	28	51%	18	33%
32L Hold Pad	0	0%	0	0%	0	0%
Total	48	100%	55	100%	54	100%

Location	4th Quarter 2005		4th Quarter 2004		12 Month Avg. ¹	
	Run-ups	Percentage	Run-ups	Percentage	Run-ups	Percentage
UNITED	24	75%	20	67%	20	59%
9R Hold Pad	8	25%	9	30%	13	38%
32L Hold Pad	0	0%	1	3%	1	3%
Total	32	100%	30	100%	34	100%

Location	4th Quarter 2005		4th Quarter 2004		12 Month Avg. ¹	
	Run-ups	Percentage	Run-ups	Percentage	Run-ups	Percentage
Others	11	100%	24	92%	35	88%
9R Hold Pad	0	0%	1	4%	4	10%
32L Hold Pad	0	0%	1	4%	1	3%
Total	11	100%	26	100%	40	100%

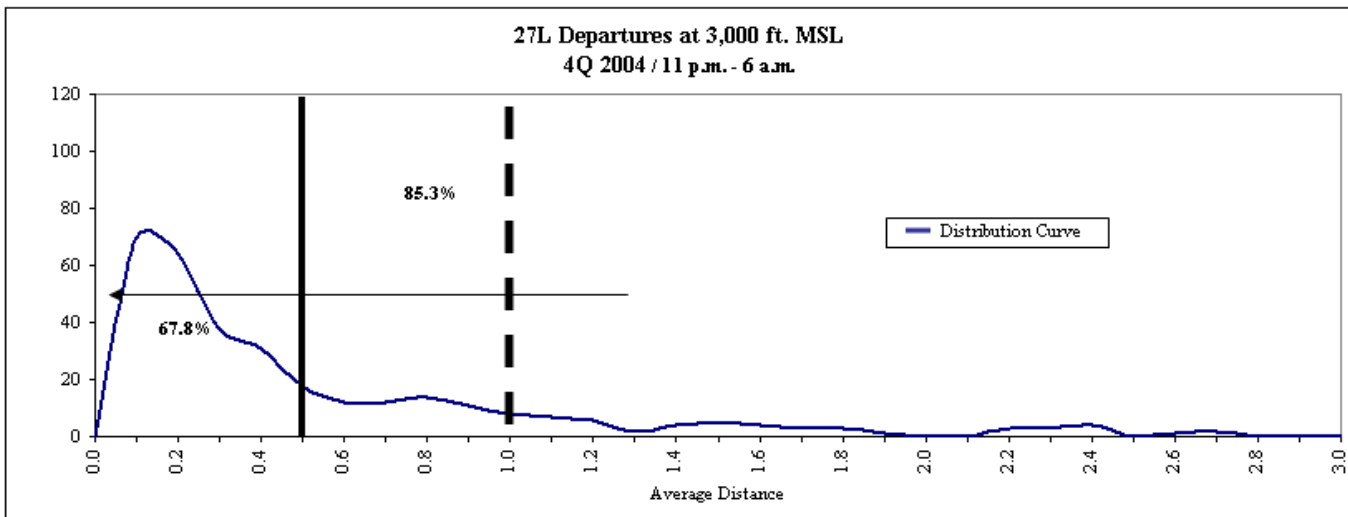
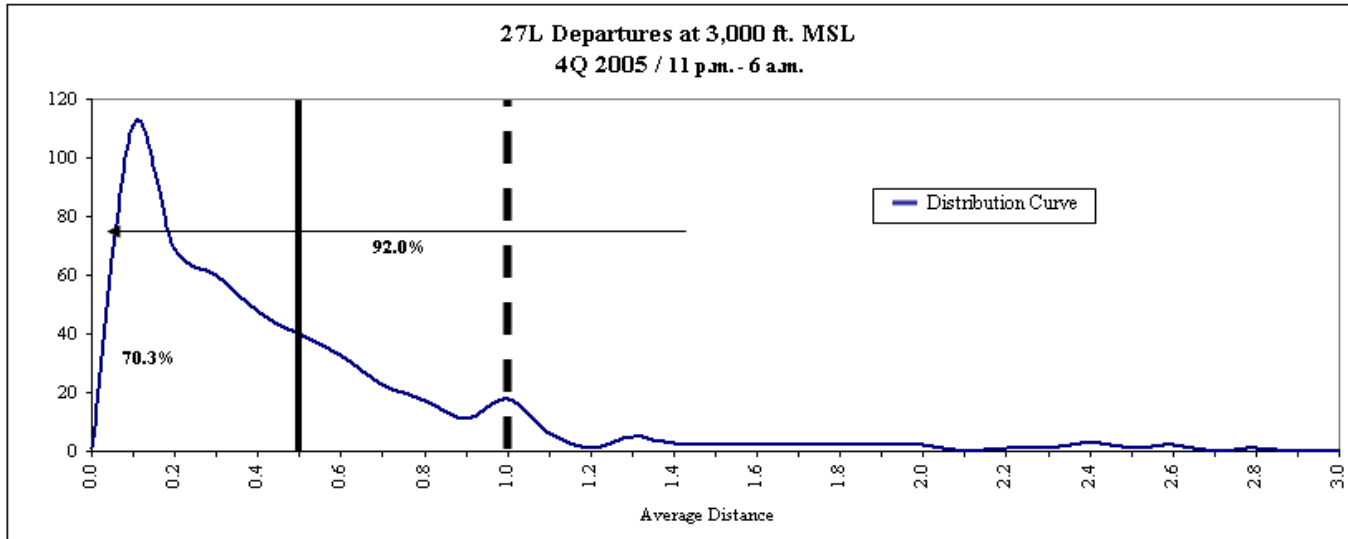


1. 12 Month Average equals the average of 1Q 2005, 2Q 2005, 3Q 2005 and 4Q 2005.
 Source: Chicago Department of Aviation, Ground Run-up Logs



Airline	4th Quarter 2005 11 p.m. - 6 a.m.	
	Departures	Average Distance
American Airlines	30	0.62
Asiana Airlines	4	0.22
Airborne Express	19	0.48
Air France	4	0.36
Mesa Airlines/United Express	12	0.53
America West Airlines	7	0.41
Air Wisconsin/United Express	8	0.89
British Airways	2	0.52
Air China	2	0.28
China Cargo Airlines	3	0.10
Continental Airlines	5	0.21
Comair/Delta Connection	5	0.41
Cathay Pacific	11	0.34
Custom Air Transport	7	0.77
Delta Airlines	3	0.76
DHL	2	1.68
American Eagle	21	0.65
Eva Air	5	0.09
Federal Express	44	0.43
USA 3000 Airlines	3	0.42
Japan Air Lines	12	0.38
Korean Air	8	0.23
Trans States/United Express	2	1.58
Mexicana	107	0.28
Nippon Cargo Airlines	7	0.37
Northwest Airlines	12	0.34
Polar Air Cargo	15	0.17
Scandinavian Air System	1	1.42
SkyWest/United Express	11	0.90
TACA International Airlines	17	0.32
United Airlines	38	0.60
UPS	11	0.35
Overall	438	0.53

4th Quarter 2004 11 p.m. - 6 a.m.	
Departures	Average Distance
45	0.58
3	0.08
13	0.35
2	1.78
--	--
--	--
18	1.13
2	0.61
2	0.46
--	--
--	--
1	0.26
4	0.36
3	1.31
--	--
17	0.34
19	0.38
--	--
24	0.39
3	0.60
4	0.26
7	0.25
7	0.64
39	0.33
--	--
8	0.22
8	0.20
4	0.18
13	0.70
17	0.55
20	0.60
8	0.55
291	0.52

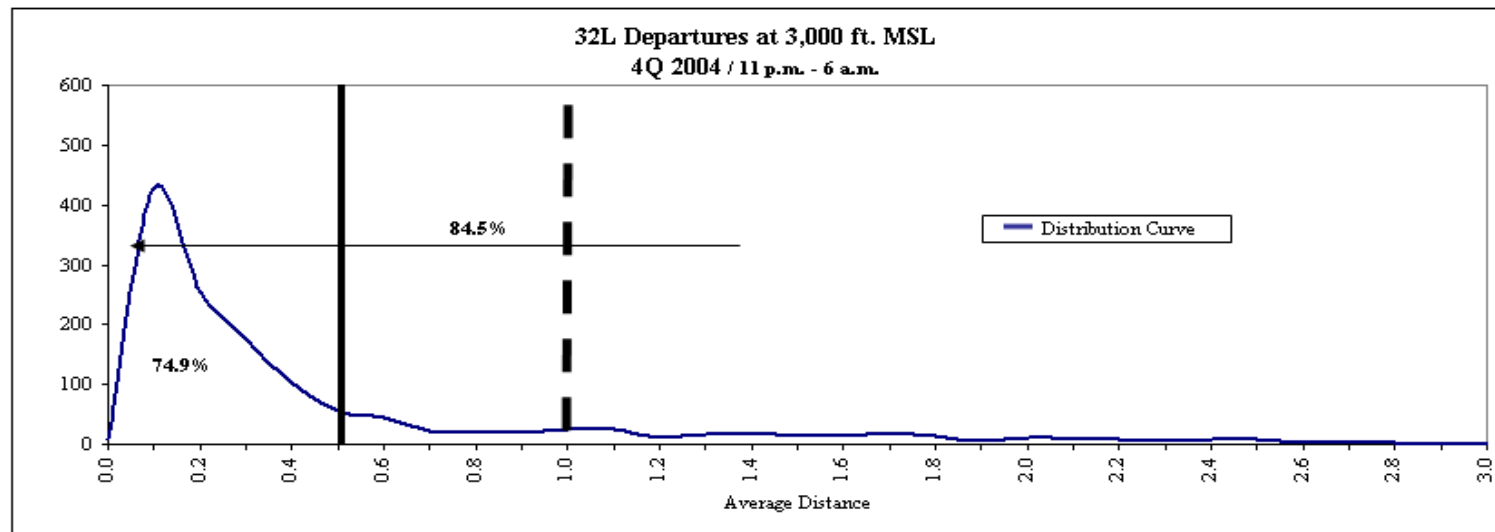
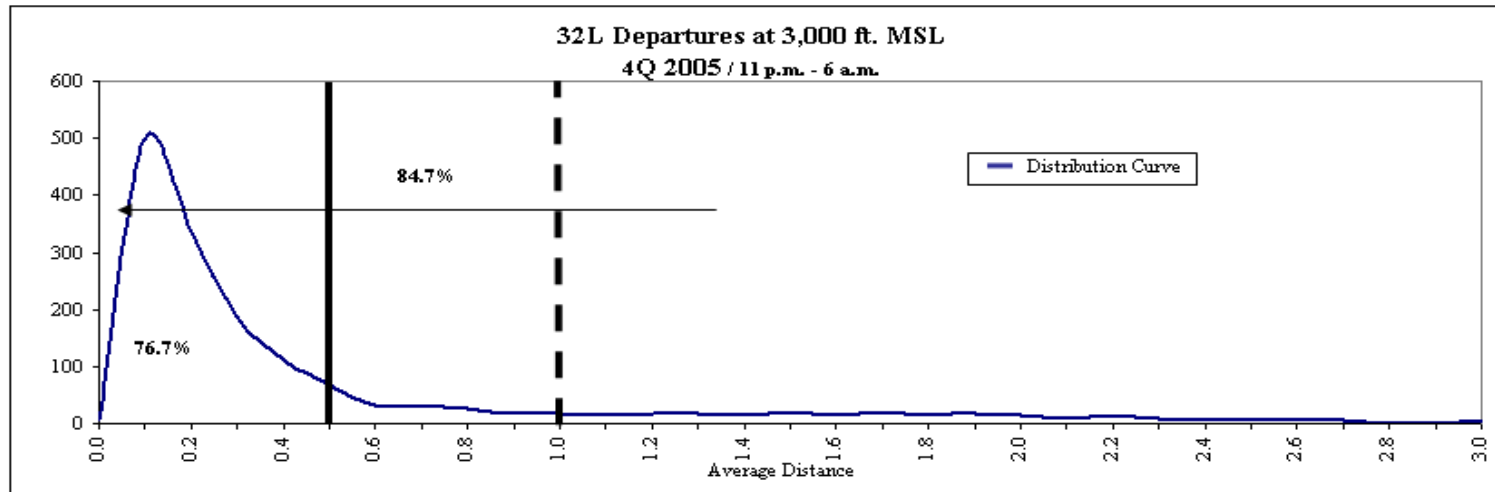


Nighttime Hours 11 p.m. to 6 a.m.: In 4Q 2005, 70.3% of departures were within 1/2 nautical mile and 92.0% were within 1 nautical mile of the preferred flight track.
In 4Q 2004, 67.8% of departures were within 1/2 nautical mile and 85.3% were within 1 nautical mile of the preferred flight track.



Airline	4th Quarter 2005	
	11 p.m. - 6 a.m.	
	Departures	Average Distance
American Airlines	108	0.63
Asiana Airlines	53	0.18
Airborne Express	46	0.40
Air France	60	0.37
Mesa Airlines/United Express	45	0.56
America West Airlines	19	0.47
Air Wisconsin/United Express	5	0.83
British Airways	4	0.27
China Airlines	15	0.42
Air China	14	0.17
Chautauqua/United Express	4	1.55
China Cargo Airlines	13	0.17
Continental Airlines	7	0.27
Comair/Delta Connection	17	0.31
Cathay Pacific	40	0.54
Custom Air Transport	30	0.51
Delta Airlines	20	0.33
DHL	13	0.37
Lufthansa	2	0.30
American Eagle	89	0.81
Eva Air	12	0.11
Federal Express	237	0.34
USA 3000 Airlines	8	0.06
Japan Air Lines	58	0.18
Korean Air	44	0.18
Trans States/United Express	13	1.35
Mexicana	86	0.17
Nippon Cargo Airlines	40	0.26
Northwest Airlines	76	0.20
Polar Air Cargo	32	0.20
Scandinavian Air System	6	0.29
SkyWest/United Express	55	0.95
TACA International Airlines	12	0.14
United Airlines	160	0.92
UPS	37	0.35
Overall	1480	0.43

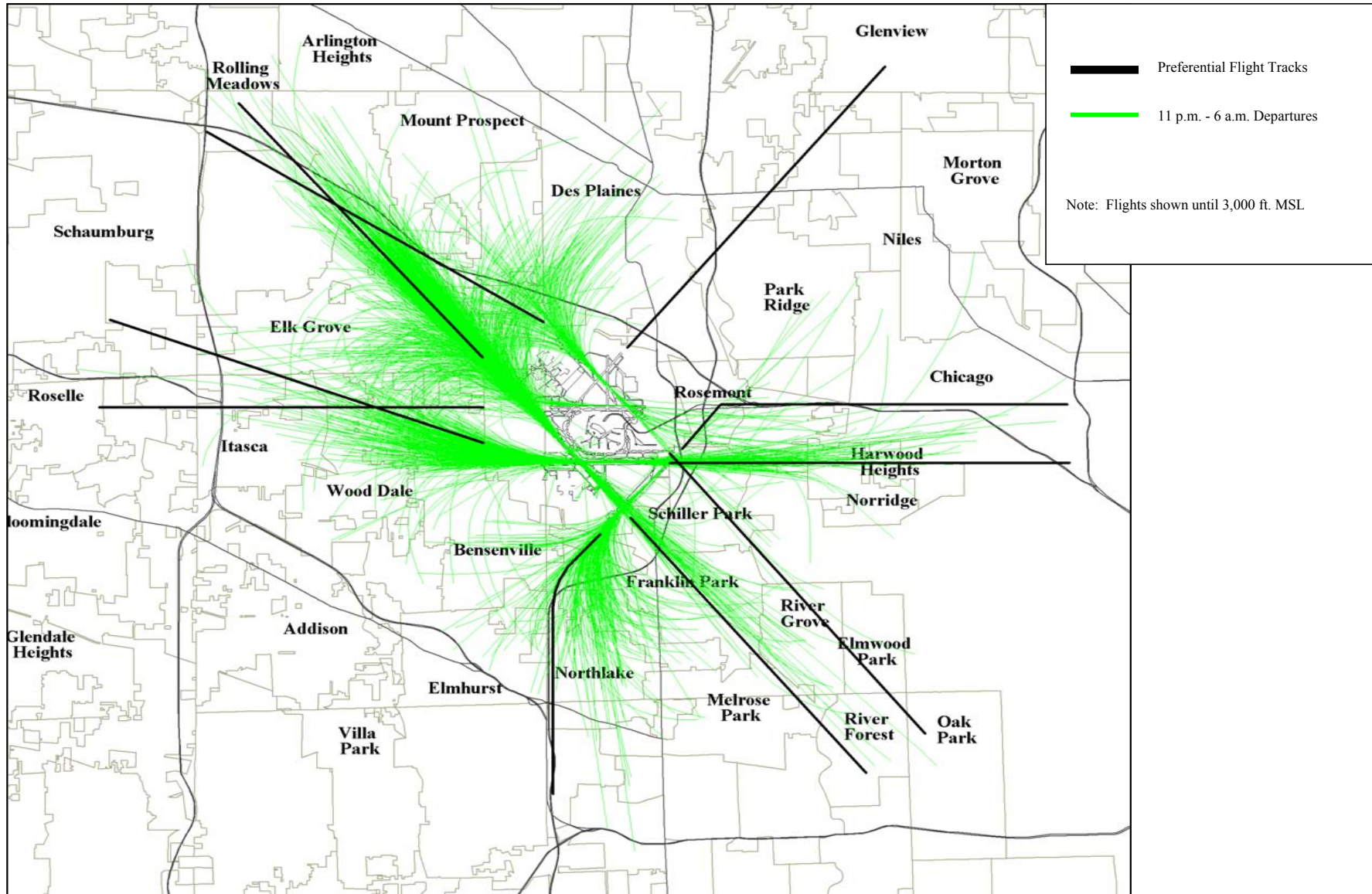
4th Quarter 2004	
11 p.m. - 6 a.m.	
Departures	Average Distance
128	0.63
22	0.15
31	0.48
52	0.68
9	1.21
6	0.74
54	0.48
4	0.24
5	0.27
13	0.16
13	0.51
17	0.19
--	--
--	--
31	0.37
24	0.35
--	--
23	0.44
24	0.20
25	0.50
15	0.07
224	0.49
4	0.24
50	0.17
41	0.18
36	0.84
44	0.37
30	0.19
75	0.15
48	0.20
4	0.08
25	0.93
6	0.45
137	0.83
28	0.45
1248	0.41



Nighttime Hours 11 p.m. to 6 a.m.: In 4Q 2005, 76.7% of departures were within 1/2 nautical mile and 84.7% were within 1 nautical mile of the preferred flight track.
In 4Q 2004, 74.9% of departures were within 1/2 nautical mile and 84.5% were within 1 nautical mile of the preferred flight track.

Chicago O'Hare International Airport
Period: 4th Quarter 2005

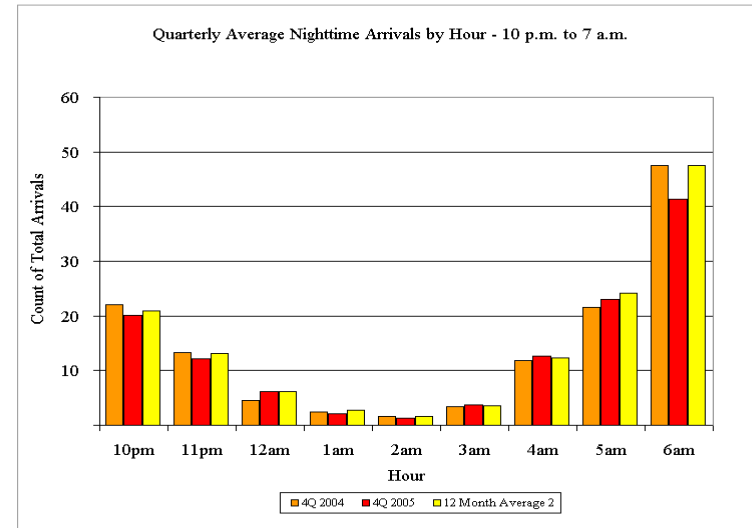
Nighttime Preferential Flight Track Compliance (11 p.m. - 6 a.m.)





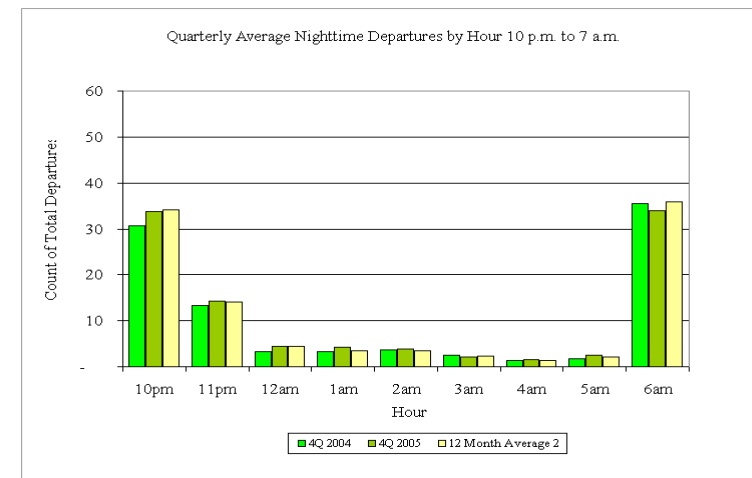
Arrivals

Quarter	Quarterly Average Nighttime Arrivals by Hour - 10 p.m. to 7 a.m.										
	10pm	11pm	12am	1am	2am	3am	4am	5am	6am	Total *	Stage 3 Jets
4Q 2004	22	13	5	2	2	3	12	22	47	128	100%
1Q 2005	23	14	7	3	2	3	12	24	45	131	100%
2Q 2005	21	14	6	3	2	4	11	26	55	141	100%
3Q 2005	20	12	6	3	2	4	14	25	50	135	100%
4Q 2005	20	12	6	2	1	4	13	23	41	123	100%
12 Month Average ²	21	13	6	3	2	4	12	24	48	132	100%



Departures

Quarter	Quarterly Average Nighttime Departures by Hour - 10 p.m. to 7 a.m.										
	10pm	11pm	12am	1am	2am	3am	4am	5am	6am	Total *	Stage 3 Jets
4Q 2004	31	13	3	3	4	2	1	2	35	95	100%
1Q 2005	32	16	5	3	3	2	1	2	37	102	100%
2Q 2005	34	13	4	3	3	3	1	2	39	102	100%
3Q 2005	37	14	5	3	4	3	2	1	34	102	100%
4Q 2005	34	14	4	4	4	2	1	2	34	101	100%
12 Month Average ²	34	14	4	3	4	2	1	2	36	101	100%



1. Data Represents Total Operations Per Quarter as measured by Airport Noise Monitoring System

2. 12 Month Average equals the average of 1Q 2005, 2Q 2005, 3Q 2005 and 4Q 2005.

* Total may not add due to rounding.

Source: Chicago Airport Noise Monitoring System

Chicago O'Hare International Airport
Period: 4th Quarter 2005

Quarterly Nighttime Noise Complaints (10 p.m. to 7 a.m.)



Community	# of Complaints			Percentage of Complaints			# of Callers			Percentage of Callers		
	4th Quarter 2005	4th Quarter 2004	12 Month Avg. ²	4th Quarter 2005	4th Quarter 2004	12 Month Avg. ²	4th Quarter 2005	4th Quarter 2004	12 Month Avg. ²	4th Quarter 2005	4th Quarter 2004	12 Month Avg. ²
Arlington Heights	3	4	4	2%	1%	2%	2	3	3	4%	3%	3%
Bensenville	4	1	3	2%	1%	2%	3	1	3	6%	1%	3%
Bloomington	2	0	0	1%	0%	0%	1	0	0	2%	0%	0%
Carol Stream	0	0	0	0%	0%	0%	0	0	0	0%	0%	0%
Chicago	16	26	22	10%	4%	11%	9	12	11	17%	12%	12%
Des Plaines	8	32	26	5%	2%	13%	4	13	11	8%	13%	11%
Downers Grove	0	1	0	0%	0%	0%	0	1	0	0%	1%	0%
Elk Grove Village	5	3	4	3%	2%	2%	4	3	3	8%	3%	3%
Elmhurst	1	8	7	1%	0%	3%	1	7	6	2%	7%	6%
Elmwood Park	0	15	4	0%	0%	2%	0	9	2	0%	9%	2%
Franklin Park	9	15	20	6%	2%	10%	5	1	11	9%	1%	11%
Gary, IN	57	0	5	35%	0%	2%	1	0	1	2%	0%	1%
Glenview	1	46	12	1%	0%	6%	1	7	2	2%	7%	2%
Harwood Heights	3	16	14	2%	1%	7%	2	2	4	4%	2%	4%
Hillside	9	0	5	6%	0%	2%	1	0	2	2%	0%	2%
Hinsdale	0	0	0	0%	0%	0%	0	0	0	0%	0%	0%
Hoffman Estates	0	0	0	0%	0%	0%	0	0	0	0%	0%	0%
Inverness	0	2	1	0%	0%	0%	0	2	1	0%	2%	1%
Itasca	0	0	1	0%	0%	1%	0	0	1	0%	0%	1%
Lake Zurich	0	2	1	0%	0%	1%	0	1	1	0%	1%	1%
Lombard	3	0	1	2%	0%	1%	1	0	1	2%	0%	1%
Medinah	0	11	3	0%	0%	1%	0	2	1	0%	2%	1%
Melrose Park	8	0	5	5%	1%	3%	2	0	2	4%	0%	2%
Mount Prospect	1	0	1	1%	0%	0%	1	0	1	2%	0%	1%
Niles	0	4	2	0%	0%	1%	0	3	1	0%	3%	1%
Norridge	13	3	4	8%	2%	2%	4	1	2	8%	1%	2%
Northlake	1	2	2	1%	0%	1%	1	1	2	2%	1%	2%
Oak Park	0	3	2	0%	0%	1%	0	2	1	0%	2%	1%
Palatine	1	18	6	1%	0%	3%	1	14	4	2%	14%	4%
Park Ridge	10	0	11	6%	2%	6%	5	0	6	9%	0%	6%
River Forest	0	0	3	0%	0%	1%	0	0	2	0%	0%	2%
River Grove	0	10	3	0%	0%	1%	0	2	1	0%	2%	1%
Rolling Meadows	4	0	3	2%	0%	1%	1	0	1	2%	0%	1%
Roselle	0	0	0	0%	0%	0%	0	0	0	0%	0%	0%
Rosemont	0	0	0	0%	0%	0%	0	0	0	0%	0%	0%
Schaumburg	0	1	1	0%	0%	0%	0	1	1	0%	1%	1%
Schiller Park	2	0	1	1%	1%	1%	2	0	1	4%	0%	1%
Wood Dale	0	14	8	0%	0%	4%	0	9	5	0%	9%	5%
Other 1	1	0	14	1%	0%	7%	1	0	8	2%	0%	8%
Total	162	237	194	100%	100%	22%	53	97	96	100%	100%	100%

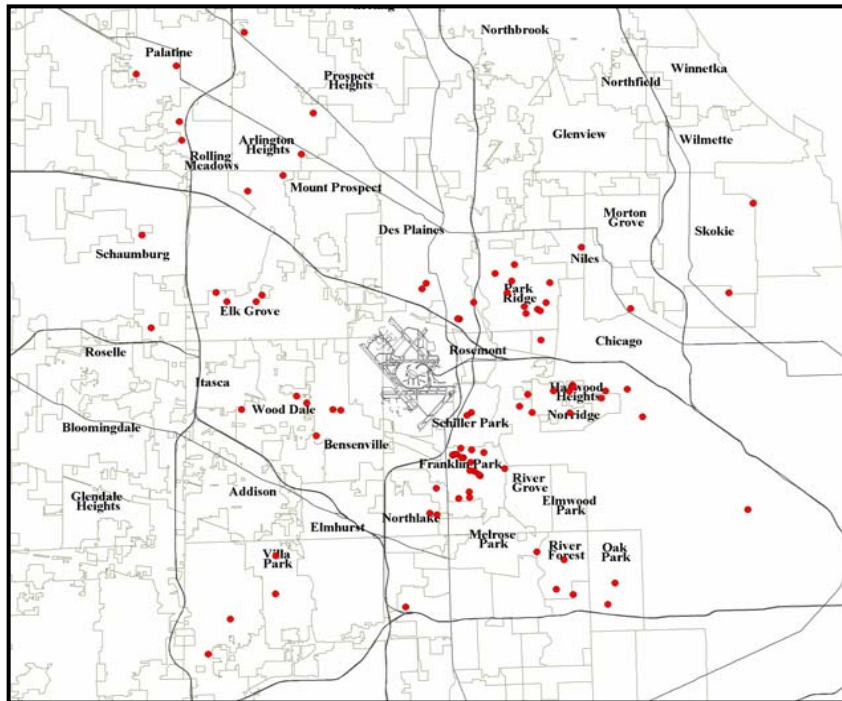
¹ Other: Evanston
² 12 Month Average equals average of 1Q 2005, 2Q 2005, 3Q 2005 and 4Q 2005
Source: Chicago Airport Noise Monitoring System



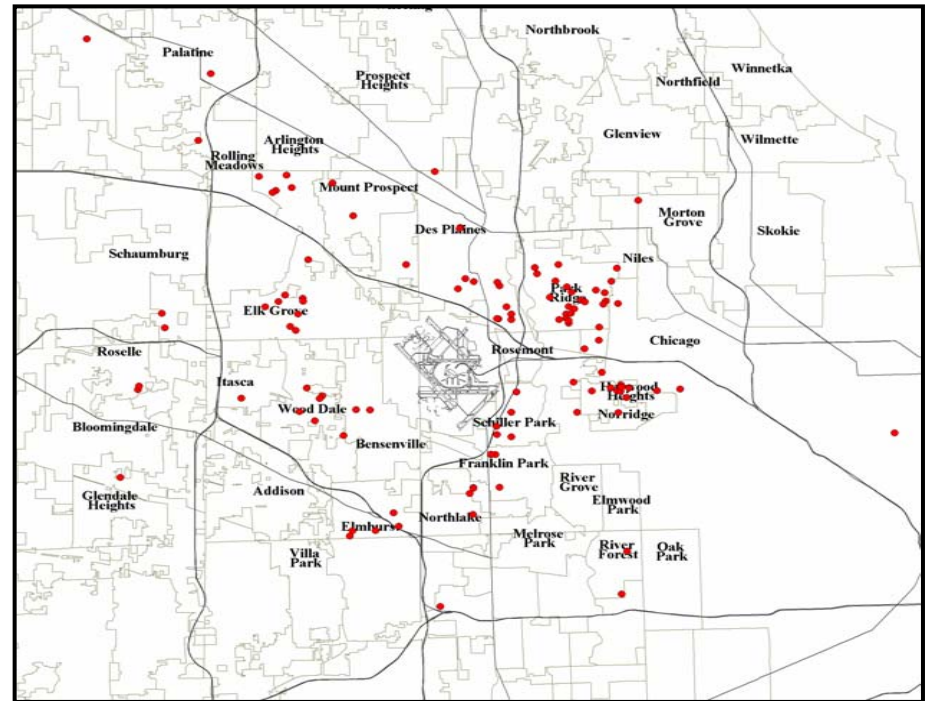
Legend

● Location of Nighttime Noise Complaints

4th Quarter 2005 Nighttime Complaint Locations:



4th Quarter 2004 Nighttime Complaint Locations:



Note: Not all callers are located due to lack of address information or are located outside the extent of the map.



Noise Monitor	Community	<u>4th Quarter 2005</u>		<u>4th Quarter 2004</u>		<u>12 Month Average</u>	
		<u>Aircraft Leq¹</u>	<u>Community Leq¹</u>	<u>Aircraft Leq¹</u>	<u>Community Leq¹</u>	<u>Aircraft Leq¹</u>	<u>Community Leq¹</u>
1	Arlington Heights	53.9	52.9	53.8	56.1	53.8	54.6
2	Melrose Park	48.2	54.8	48.1	56.2	48.0	55.2
3	Bensenville	52.3	56.8	51.7	58.2	52.0	57.7
4	Schiller Park	49.1	60.5	50.1	56.7	52.9	58.6
5	Chicago	47.1	53.6	48.3	54.1	51.2	56.1
6	Chicago	42.0	51.5	47.4	52.1	45.6	52.2
7	Des Plaines	52.0	53.7	51.2	55.6	51.0	54.9
8	Des Plaines	51.3	55.0	54.4	58.4	55.0	57.3
9*	Des Plaines	--	--	58.6	61.4	56.7	56.8
10	Rolling Meadows	50.8	55.7	53.0	56.3	50.6	56.8
11	Chicago	47.3	51.2	48.0	53.9	50.4	55.0
12	Elk Grove	51.4	47.8	50.8	52.5	51.0	54.1
13	Elk Grove	66.9	71.2	66.8	67.9	67.1	68.3
14	Elk Grove	56.8	52.7	56.8	58.3	56.9	56.6
15	Franklin Park	50.5	55.3	52.0	56.9	52.3	56.6
16	Franklin Park	61.3	66.0	62.7	68.2	62.5	66.7
17	Harwood Heights	59.9	54.6	58.4	59.8	58.2	57.5
19	Stone Park	54.1	68.2	50.7	57.3	51.9	63.1
20	Mount Prospect	53.6	51.3	53.4	55.2	53.3	53.6
21	Mount Prospect	47.8	48.4	47.8	50.7	48.2	51.4
22	Norridge	61.6	54.3	60.7	61.4	60.2	58.5
23	Northlake	54.8	56.0	56.4	59.5	55.5	57.8
24	Park Ridge	45.1	49.9	46.8	51.5	46.9	52.2
25	Park Ridge	47.5	55.6	49.9	55.2	49.4	54.6
26	Park Ridge	44.8	49.6	46.8	51.3	47.6	51.1
27	Rosemont	52.0	59.6	56.5	62.5	55.9	61.4
28	Schiller Park	69.6	63.3	70.6	71.6	69.9	68.6
32	Wood Dale	57.2	59.1	55.7	60.6	55.8	59.3
34	Elk Grove	51.0	50.9	49.4	52.8	49.4	51.7
35	Unincorp. Cook	62.4	63.1	54.6	58.8	60.6	62.4
37	Mount Prospect	45.3	49.4	45.3	51.6	45.2	66.6

* Site number 9 was removed due to community request.

1. Leq (Equivalent Sound Level): The average sound energy level during a stated period of time.

Red represents an increase of 1 dB or more from same quarter previous year (5 monitors). Green represents a decrease of 1dB or more from same quarter previous year (13 monitors).

Source: Chicago Airport Noise Monitoring System