

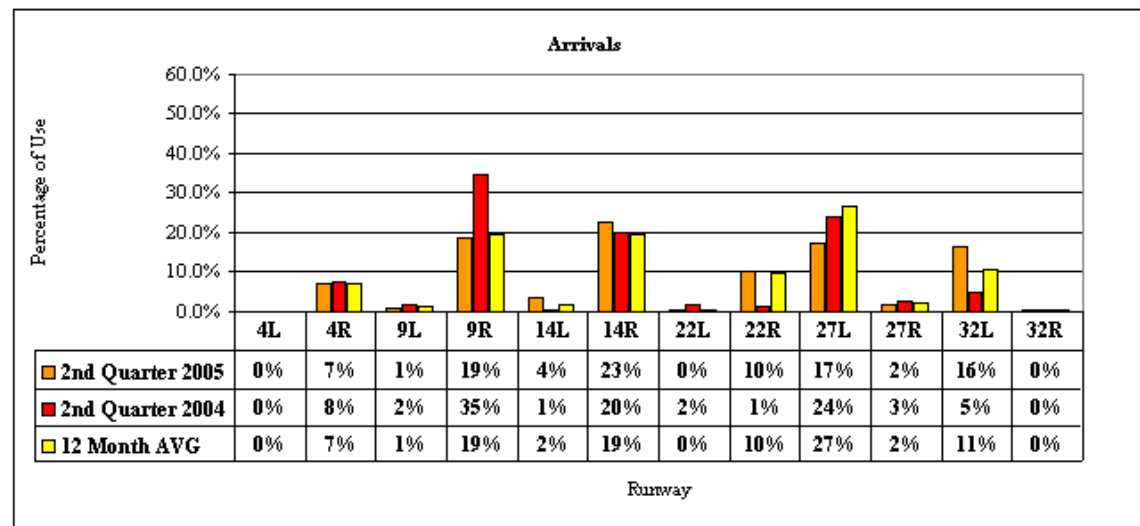
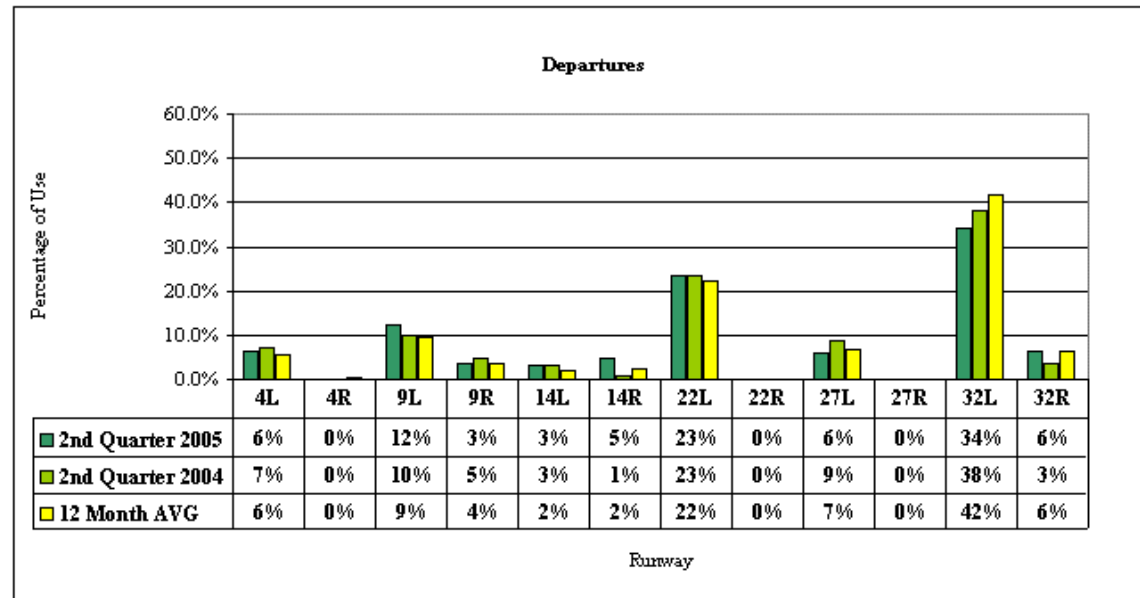
*Fly Quiet Adherence Report  
2nd Quarter 2005*

*Chicago O'Hare International Airport*



*City of Chicago Department of Aviation*

*Visit the Community Resource Center on the Internet at  
<http://www.chicagoairports.com>*



Source: Chicago Airport Noise Monitoring System

# Chicago O'Hare International Airport

## Period: 2nd Quarter 2005

# Quarterly Aircraft Ground Run-ups



### All Airlines - Run-ups

Location	2nd Quarter 2005		2nd Quarter 2004		12 Month Avg. <sup>1</sup>	
	Run-ups	Percentage	Run-ups	Percentage	Run-ups	Percentage
GRE	171	76%	60	55%	169	77%
9R Hold Pad	53	24%	47	43%	48	22%
32L Hold Pad	0	0%	3	3%	2	1%
<b>Total</b>	<b>224</b>	<b>100%</b>	<b>110</b>	<b>100%</b>	<b>219</b>	<b>100%</b>

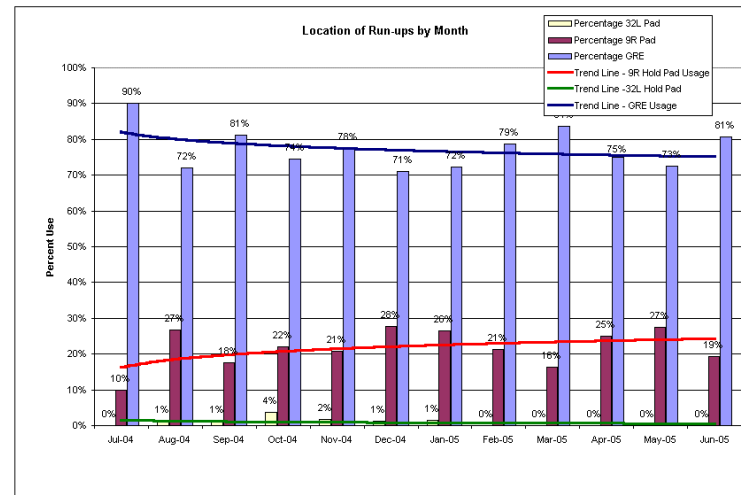
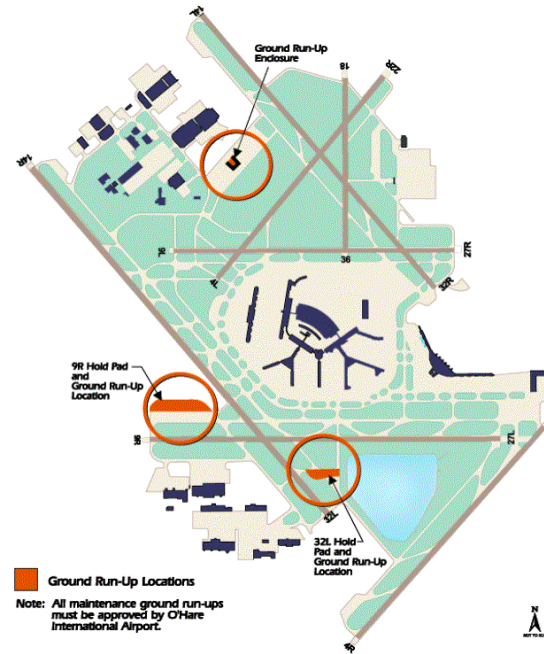
Location	2nd Quarter 2005		2nd Quarter 2004		12 Month Avg. <sup>1</sup>	
	Run-ups	Percentage	Run-ups	Percentage	Run-ups	Percentage
AA American	49	82%	26	70%	62	79%
9R Hold Pad	11	18%	10	27%	15	19%
32L Hold Pad	0	0%	1	3%	1	1%
<b>Total</b>	<b>60</b>	<b>100%</b>	<b>37</b>	<b>100%</b>	<b>78</b>	<b>100%</b>

Location	2nd Quarter 2005		2nd Quarter 2004		12 Month Avg. <sup>1</sup>	
	Run-ups	Percentage	Run-ups	Percentage	Run-ups	Percentage
American Eagle	18	90%	10	83%	13	93%
9R Hold Pad	2	10%	2	17%	1	7%
32L Hold Pad	0	0%	0	0%	0	0%
<b>Total</b>	<b>20</b>	<b>100%</b>	<b>12</b>	<b>100%</b>	<b>14</b>	<b>100%</b>

Location	2nd Quarter 2005		2nd Quarter 2004		12 Month Avg. <sup>1</sup>	
	Run-ups	Percentage	Run-ups	Percentage	Run-ups	Percentage
nwa Northwest Airlines	40	66%	18	42%	35	64%
9R Hold Pad	21	34%	23	53%	20	36%
32L Hold Pad	0	0%	2	5%	0	0%
<b>Total</b>	<b>61</b>	<b>100%</b>	<b>43</b>	<b>100%</b>	<b>55</b>	<b>100%</b>

Location	2nd Quarter 2005		2nd Quarter 2004		12 Month Avg. <sup>1</sup>	
	Run-ups	Percentage	Run-ups	Percentage	Run-ups	Percentage
UNITED	16	52%	1	10%	24	69%
9R Hold Pad	15	48%	9	90%	10	29%
32L Hold Pad	0	0%	0	0%	1	3%
<b>Total</b>	<b>31</b>	<b>100%</b>	<b>10</b>	<b>100%</b>	<b>35</b>	<b>100%</b>

Location	2nd Quarter 2005		2nd Quarter 2004		12 Month Avg. <sup>1</sup>	
	Run-ups	Percentage	Run-ups	Percentage	Run-ups	Percentage
Others	48	92%	5	63%	33	92%
9R Hold Pad	4	8%	3	38%	3	8%
32L Hold Pad	0	0%	0	0%	0	0%
<b>Total</b>	<b>52</b>	<b>100%</b>	<b>8</b>	<b>100%</b>	<b>36</b>	<b>100%</b>



1. 12 Month Average equals the average of 3Q 2004, 4Q 2004, 1Q 2005 and 2Q 2005.

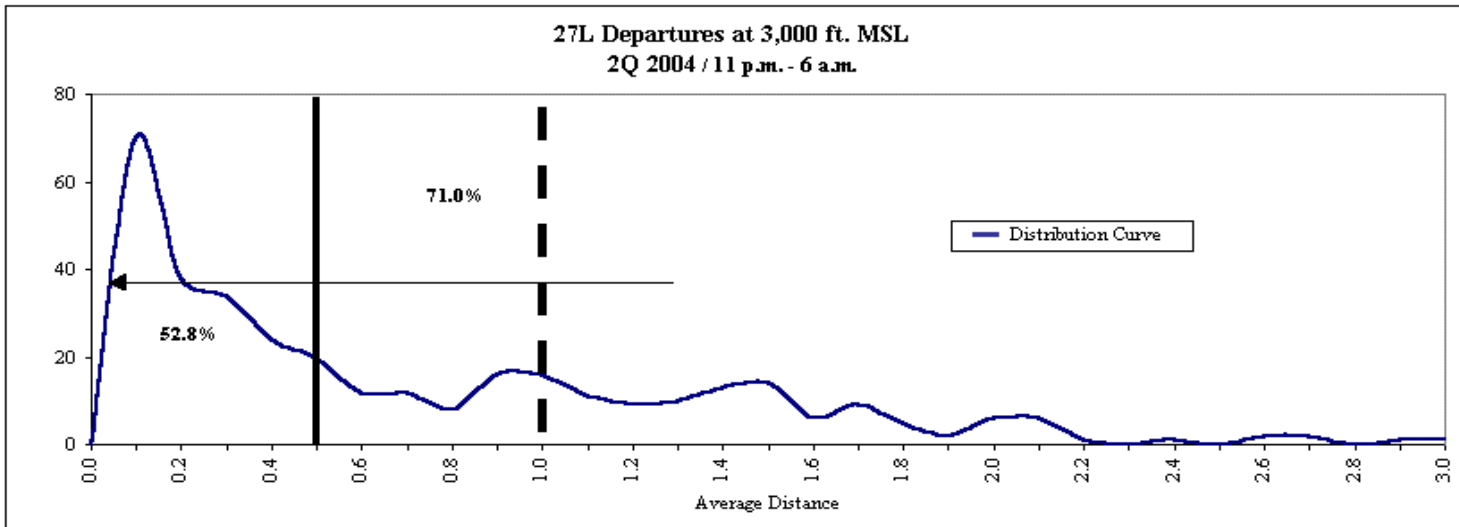
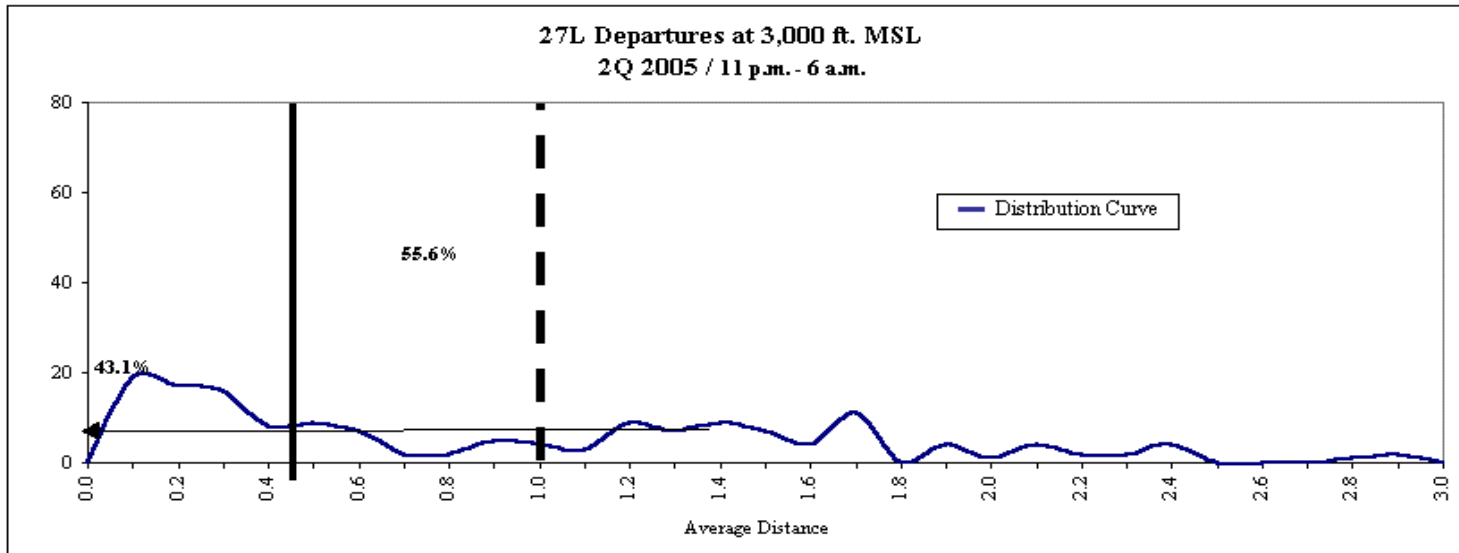
Source: Chicago Department of Aviation, Ground Run-up Logs

Preferential Flight Track Summary  
 Runway 27L Departures



Airline	2nd Quarter 2005 11 p.m. - 6 a.m.		2nd Quarter 2004 11 p.m. - 6 a.m.	
	Departures	Average Distance	Departures	Average Distance
American Airlines	27	1.39	51	0.85
Asiana Airlines	--	--	4	0.16
Airborne Express	--	--	10	0.47
Air France	--	--	4	0.37
Mesa Airlines/United Express	2	0.18	3	0.73
America West Airlines	--	--	2	0.68
Air Wisconsin/United Express	3	1.01	13	0.77
Continental Express	--	--	--	--
China Airlines	2	0.59	1	0.48
Air China	--	--	4	0.09
Chautauqua/United Express	2	2.55	--	--
China Cargo Airlines	2	0.69	--	--
Continental Airlines	1	0.08	--	--
Comair/Delta Connection	--	--	--	--
Cathay Pacific	--	--	3	0.56
China Southern Airlines	--	--	5	0.21
Custom Air Transport	--	--	2	0.94
Delta Airlines	3	1.13	1	1.52
DHL	3	0.20	4	0.25
Lufthansa	--	--	3	0.20
American Eagle	13	1.28	15	0.72
Eva Air	1	0.17	--	--
Federal Express	11	0.87	35	0.72
USA 3000 Airlines	1	0.56	--	--
Independence Air	3	0.43	--	--
Japan Air Lines	1	2.34	6	0.34
Korean Air	--	--	5	0.08
Trans States/United Express	3	1.02	--	--
LOT Polish Airlines	--	--	1	0.30
TACA	7	0.35	--	--
Mexicana	16	0.20	22	0.21
Nippon Cargo Airlines	2	0.37	7	0.54
Northwest Airlines	2	0.12	7	0.38
Polar Air Cargo	6	0.26	11	0.15
Scandinavian Air System	--	--	1	1.50
SkyWest/United Express	8	1.41	--	--
Transmeridian Airlines	--	--	1	0.10
United Airlines	27	1.07	80	1.09
UPS	4	0.96	13	0.43
USAirways	2	1.44	--	--
Overall	152	0.83	314	0.53

Preferential Flight Track Summary  
 Runway 27L Departures

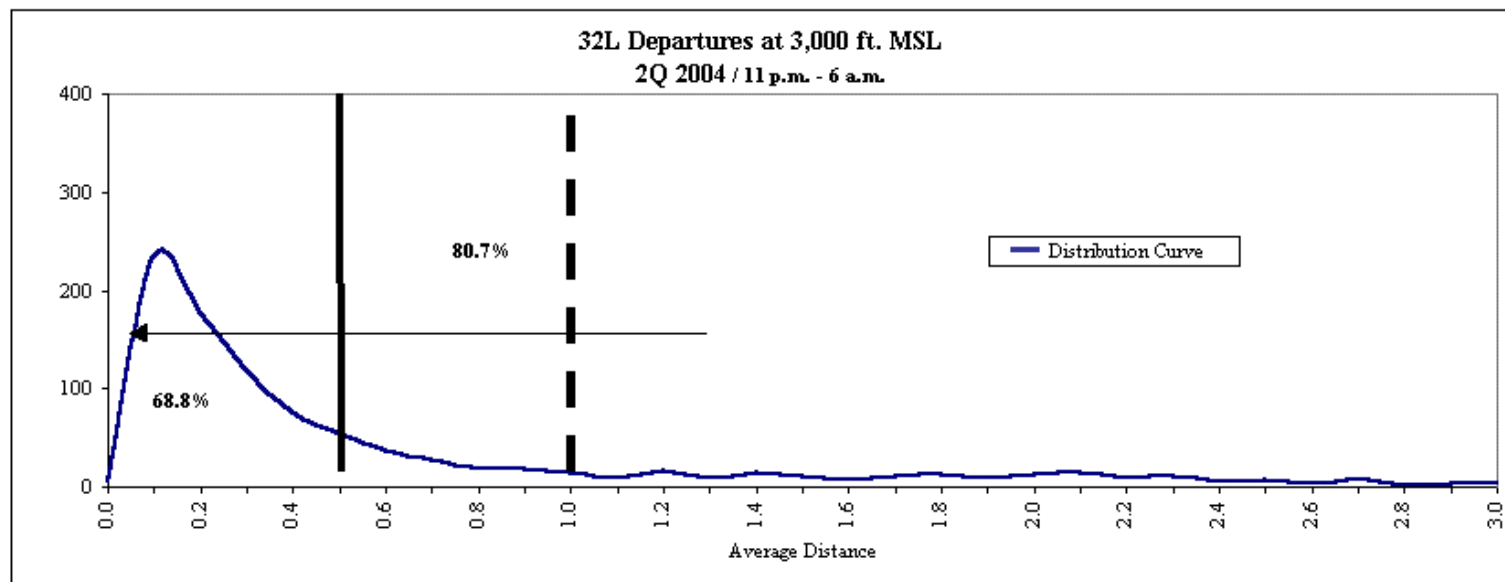
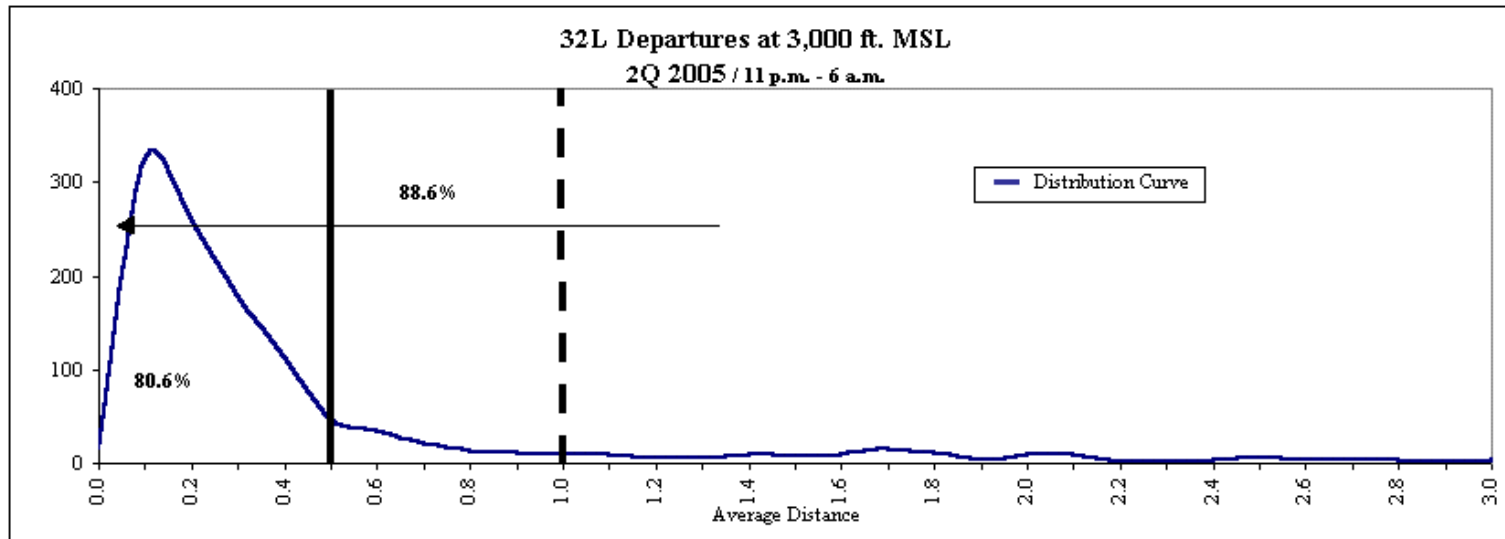


Nighttime Hours 11 p.m. to 6 a.m.: In 2Q 2005, 43.1% of departures were within 1/2 nautical mile and 55.6% were within 1 nautical mile of the preferred flight track.  
 In 2Q 2004, 52.8% of departures were within 1/2 nautical mile and 71.0% were within 1 nautical mile of the preferred flight track.

# Preferential Flight Track Summary Runway 32L Departures



Airline	2nd Quarter 2005 11 p.m. - 6 a.m.		2nd Quarter 2004 11 p.m. - 6 a.m.	
	Departures	Average Distance	Departures	Average Distance
American Airlines	65	0.83	101	0.99
Asiana Airlines	31	0.20	9	0.13
Airborne Express	26	0.39	15	0.26
Air France	48	0.41	36	0.47
Mesa Airlines/United Express	6	0.48	11	0.55
America West Airlines	2	0.99	3	0.76
Air Wisconsin/United Express	13	0.53	29	0.59
Continental Express	1	2.47	--	--
China Airlines	6	0.09	--	--
Air China	11	0.25	6	0.19
Chautauqua/United Express	14	0.36	1	0.64
China Cargo Airlines	16	0.19	2	0.20
Continental Airlines	29	0.54	8	0.87
Comair/Delta Connection	2	0.93	2	0.14
Cathay Pacific	33	0.25	28	0.28
China Southern Airlines	15	0.10	12	0.15
Custom Air Transport	22	0.30	2	0.27
Delta Airlines	2	0.18	2	0.41
DHL	19	0.19	20	0.21
Lufthansa	1	0.38	20	0.32
American Eagle	30	0.96	40	0.84
Eva Air	8	0.11	--	--
Federal Express	201	0.35	104	0.35
USA 3000 Airlines	3	0.40	--	--
Independence Air	21	0.37	--	--
Japan Air Lines	50	0.31	20	0.24
Korean Air	42	0.20	32	0.17
Trans States/United Express	6	0.70	2	0.98
LOT Polish Airlines	4	0.20	3	0.14
TACA	16	0.17	--	--
Mexicana	52	0.23	35	0.12
Nippon Cargo Airlines	35	0.35	20	0.57
Northwest Airlines	76	0.21	43	0.27
Polar Air Cargo	33	0.22	30	0.21
Scandinavian Air System	1	0.01	1	0.18
SkyWest/United Express	9	0.95	--	--
Transmeridian Airlines	5	0.16	1	0.24
United Airlines	105	0.84	151	0.98
UPS	11	0.36	37	0.33
USAirways	10	0.77	4	1.22
Overall	1080	0.45	830	0.43



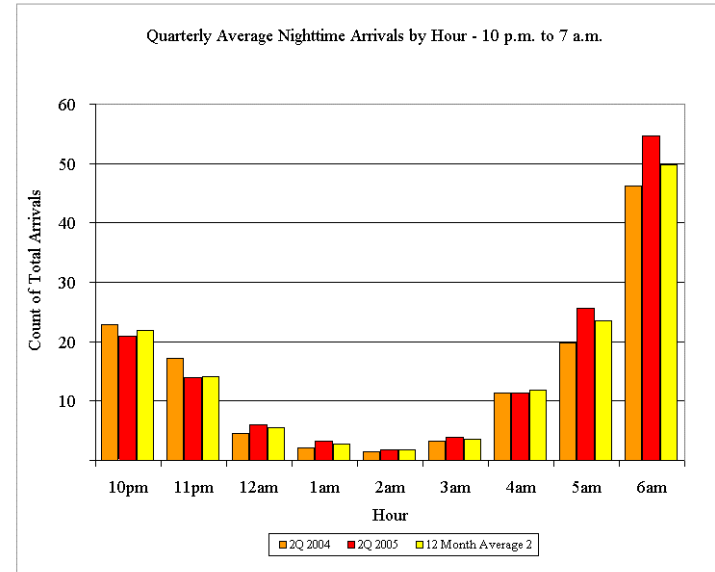
Nighttime Hours 11 p.m. to 6 a.m.: In 2Q 2005, 80.6% of departures were within 1/2 nautical mile and 88.6% were within 1 nautical mile of the preferred flight track.  
In 2Q 2004, 68.8% of departures were within 1/2 nautical mile and 80.7% were within 1 nautical mile of the preferred flight track.





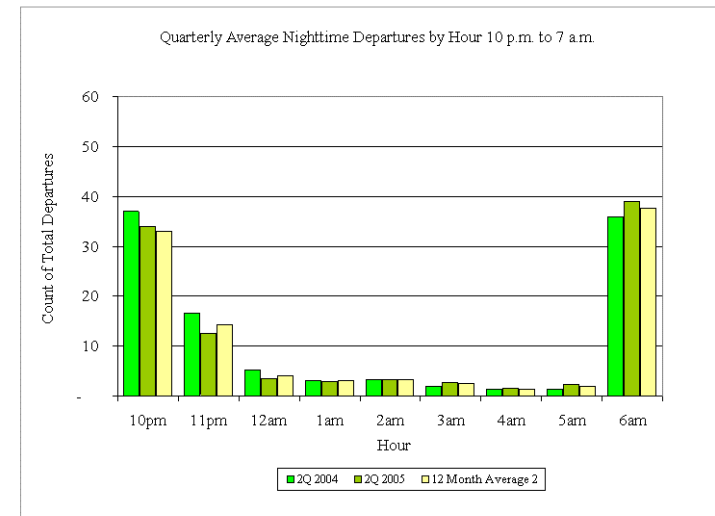
## Arrivals

Quarterly Average Nighttime Arrivals by Hour - 10 p.m. to 7 a.m.												
Quarter	10pm	11pm	12am	1am	2am	3am	4am	5am	6am	Total *	Stage 3 Jets	
2Q 2004	23	17	5	2	1	3	11	20	46	129	100%	
3Q 2004	22	15	5	3	2	3	13	23	53	139	100%	
4Q 2004	22	13	5	2	2	3	12	22	47	128	100%	
1Q 2005	23	14	7	3	2	3	12	24	45	131	100%	
2Q 2005	21	14	6	3	2	4	11	26	55	141	100%	
12 Month Average <sup>2</sup>	22	14	6	3	2	4	12	24	50	135	100%	



## Departures

Quarterly Average Nighttime Departures by Hour - 10 p.m. to 7 a.m.												
Quarter	10pm	11pm	12am	1am	2am	3am	4am	5am	6am	Total *	Stage 3 Jets	
2Q 2004	37	17	5	3	3	2	1	1	36	106	100%	
3Q 2004	35	16	4	2	3	3	2	1	39	105	100%	
4Q 2004	31	13	3	3	4	2	1	2	35	95	100%	
1Q 2005	32	16	5	3	3	2	1	2	37	102	100%	
2Q 2005	34	13	4	3	3	3	1	2	39	102	100%	
12 Month Average <sup>2</sup>	33	14	4	3	3	2	1	2	38	101	100%	



1. Data Represents Total Operations Per Quarter as measured by Airport Noise Monitoring System

2. 12 Month Average equals the average of 3Q 2004, 4Q 2004, 1Q 2005 and 2Q 2005.

\* Total may not add due to rounding

Source: Chicago Airport Noise Monitoring System

**Chicago O'Hare International Airport**  
**Period: 2nd Quarter 2005**

**Quarterly Nighttime Noise Complaints (10 p.m. to 7 a.m.)**



Community	# of Complaints			Percentage of Complaints			# of Callers			Percentage of Callers		
	2nd Quarter 2005	2nd Quarter 2004	12 Month Avg. <sup>2</sup>	2nd Quarter 2005	2nd Quarter 2004	12 Month Avg. <sup>2</sup>	2nd Quarter 2005	2nd Quarter 2004	12 Month Avg. <sup>2</sup>	2nd Quarter 2005	2nd Quarter 2004	12 Month Avg. <sup>2</sup>
Arlington Heights	5	5	4	2%	1%	1%	5	7	3	4%	3%	2%
Bensenville	5	11	7	2%	1%	2%	3	6	3	2%	3%	3%
Bloomington	0	0	0	0%	0%	0%	0	0	0	0%	0%	0%
Carol Stream	0	0	0	0%	0%	0%	0	0	0	0%	0%	0%
Chicago	20	46	38	9%	3%	11%	12	29	15	10%	12%	12%
Des Plaines	17	52	43	8%	1%	12%	5	21	12	4%	9%	10%
Downers Grove	0	4	2	0%	0%	1%	0	0	1	0%	0%	0%
Elk Grove Village	4	22	13	2%	1%	4%	4	12	5	3%	5%	4%
Elmhurst	1	7	15	0%	0%	4%	1	11	9	1%	5%	7%
Elmwood Park	0	9	6	0%	0%	2%	0	0	2	0%	0%	2%
Franklin Park	45	0	25	20%	7%	7%	27	16	13	22%	7%	11%
Gary, IN	2	2	5	1%	0%	1%	1	1	1	1%	0%	1%
Glenview	0	0	12	0%	0%	3%	0	0	2	0%	0%	1%
Harwood Heights	17	85	56	8%	2%	16%	6	25	8	5%	11%	7%
Hillside	7	19	11	3%	1%	3%	2	2	2	2%	1%	1%
Hinsdale	0	0	0	0%	0%	0%	0	0	0	0%	0%	0%
Hoffman Estates	0	0	0	0%	0%	0%	0	0	0	0%	0%	0%
Inverness	0	1	1	0%	0%	0%	0	0	1	0%	0%	0%
Itasca	1	1	1	0%	0%	0%	1	3	1	1%	1%	0%
Lake Zurich	2	0	1	1%	1%	0%	2	1	1	2%	0%	1%
Lombard	2	0	2	1%	1%	1%	2	8	2	2%	3%	1%
Medinah	0	0	3	0%	0%	1%	0	2	1	0%	1%	0%
Melrose Park	4	20	14	2%	1%	4%	3	6	3	2%	3%	2%
Mount Prospect	0	7	3	0%	0%	1%	0	1	1	0%	0%	1%
Niles	1	5	3	0%	0%	1%	1	1	2	1%	0%	1%
Norridge	8	16	9	4%	1%	2%	3	7	2	2%	3%	2%
Northlake	4	3	3	2%	1%	1%	3	0	2	2%	0%	1%
Oak Park	4	0	3	2%	0%	1%	1	7	1	1%	3%	1%
Palatine	5	2	8	2%	1%	2%	2	5	5	2%	2%	4%
Park Ridge	26	36	21	12%	3%	6%	12	23	7	10%	10%	6%
River Forest	8	2	3	4%	1%	1%	5	1	2	4%	0%	1%
River Grove	0	0	3	0%	0%	1%	0	0	1	0%	0%	1%
Rolling Meadows	7	4	8	3%	1%	2%	2	7	3	2%	3%	2%
Roselle	0	7	3	0%	0%	1%	0	3	2	0%	1%	1%
Rosemont	0	0	0	0%	0%	0%	0	0	0	0%	0%	0%
Schaumburg	1	0	1	0%	0%	0%	1	1	1	1%	0%	1%
Schiller Park	3	5	2	1%	1%	1%	2	6	1	2%	3%	1%
Wood Dale	3	12	14	1%	1%	4%	3	11	6	2%	5%	5%
Other 1	18	10	17	8%	3%	5%	13	11	9	11%	5%	7%
<b>Total</b>	<b>220</b>	<b>393</b>	<b>356</b>	<b>100%</b>	<b>100%</b>	<b>31%</b>	<b>122</b>	<b>234</b>	<b>123</b>	<b>100%</b>	<b>100%</b>	<b>100%</b>

1. Other: Barrington, Bartlett, Lincolnwood, Oak Lawn, Palos Hills, St. Charles, Villa Park, Western Springs.

2. 12 Month Average equals average of 3Q 2004, 4Q 2004, 1Q 2005 and 2Q 2005.

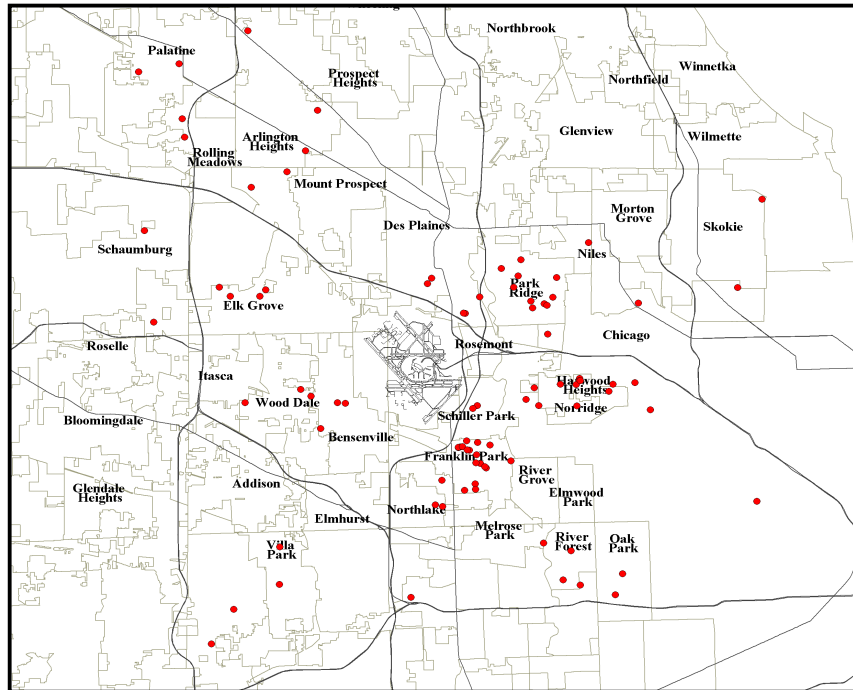
Source: Chicago Airport Noise Monitoring System



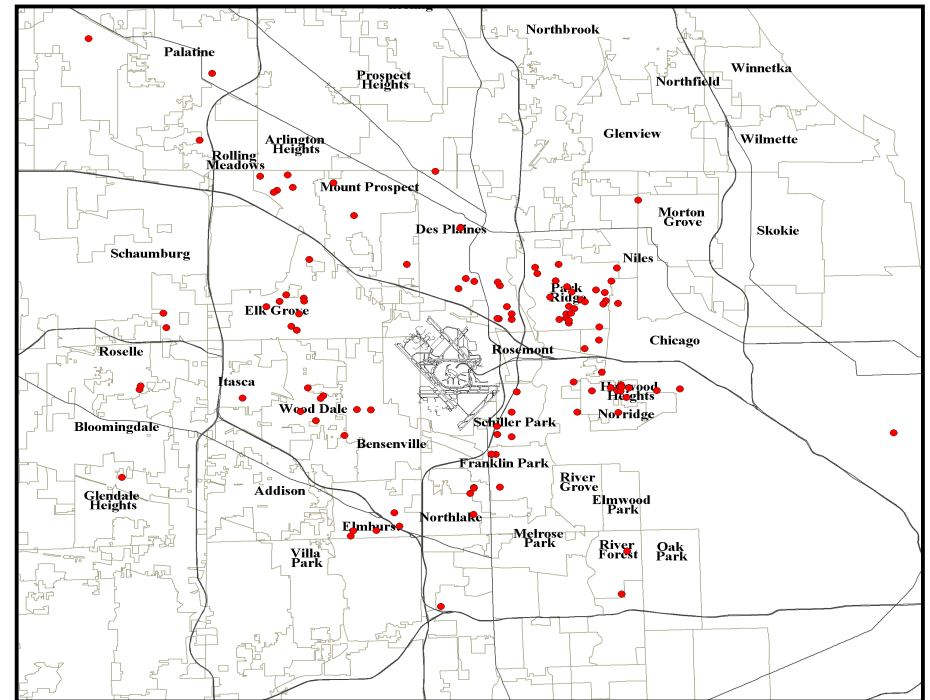
**Legend**

● Location of Nighttime Noise Complaints

2nd Quarter 2005 Nighttime Complaint Locations:



2nd Quarter 2004 Nighttime Complaint Locations:



Note: Not all callers are located due to lack of address information or are located outside the extent of the map.



Noise Monitor	Community	<u>2nd Quarter 2005</u>		<u>2nd Quarter 2004</u>		<u>12 Month Average</u>	
		<u>Aircraft Leq<sup>1</sup></u>	<u>Community Leq<sup>1</sup></u>	<u>Aircraft Leq<sup>1</sup></u>	<u>Community Leq<sup>1</sup></u>	<u>Aircraft Leq<sup>1</sup></u>	<u>Community Leq<sup>1</sup></u>
1	Arlington Heights	54.1	56.3	53.0	56.2	53.7	55.3
2	Melrose Park	49.7	55.4	48.6	54.7	47.9	55.6
3	Bensenville	50.2	57.9	55.4	59.8	51.5	57.9
4	Schiller Park	56.9	59.7	50.0	56.9	53.1	57.8
5	Chicago	50.4	55.2	47.3	54.5	49.5	55.2
6	Chicago	48.3	53.2	47.0	52.3	47.8	52.6
7	Des Plaines	49.9	56.1	49.3	54.7	50.9	55.3
8	Des Plaines	57.8	59.8	54.1	57.7	55.6	58.1
9	Des Plaines	58.9	61.7	55.3	59.8	58.4	60.8
10	Rolling Meadows	50.3	57.2	51.1	55.8	52.2	56.1
11	Chicago	53.6	58.6	51.4	55.2	50.8	56.4
12	Elk Grove	51.7	58.0	41.3	62.1	51.0	54.2
13	Elk Grove	67.1	68.1	65.2	66.6	67.0	67.0
14	Elk Grove	57.0	58.5	56.7	58.2	56.9	57.5
15	Franklin Park	55.2	59.3	50.3	56.2	52.7	57.2
16	Franklin Park	64.4	67.8	57.7	67.0	62.8	67.3
17	Harwood Heights	55.9	57.8	57.5	59.3	57.8	59.0
19	Stone Park	51.3	58.3	50.5	56.8	51.0	57.5
20	Mount Prospect	53.2	54.9	52.8	55.0	53.1	54.9
21	Mount Prospect	47.3	54.2	47.9	51.2	47.9	51.7
22	Norridge	57.7	58.8	60.1	61.0	59.4	60.8
23	Northlake	56.3	59.6	55.2	59.0	56.4	58.7
24	Park Ridge	48.1	52.6	46.7	52.1	47.8	51.7
25	Park Ridge	51.9	55.4	50.4	55.1	50.3	54.6
26	Park Ridge	50.0	52.5	49.7	52.9	48.3	51.5
27	Rosemont	57.7	63.1	56.6	62.1	56.6	62.1
28	Schiller Park	68.0	69.2	69.9	71.0	70.2	70.1
32	Wood Dale	51.3	58.7	55.3	59.5	55.6	59.9
34	Elk Grove	48.1	52.6	48.3	52.7	48.8	52.1
35	Unincorp. Cook	58.9	62.4	52.8	56.4	55.9	60.1
37	Mount Prospect	44.4	57.1	47.3	51.9	45.2	53.4

1. Leq (Equivalent Sound Level): The average sound energy level during a stated period of time.

Red represents an increase of 1 dB or more from same quarter previous year (17 monitors). Green represents a decrease of 1 dB or more from same quarter previous year (6 monitors).

Source: Chicago Airport Noise Monitoring System