

Runway Use Report

Chicago O'Hare International Airport

Period: February 2010

Time of Day: All hours



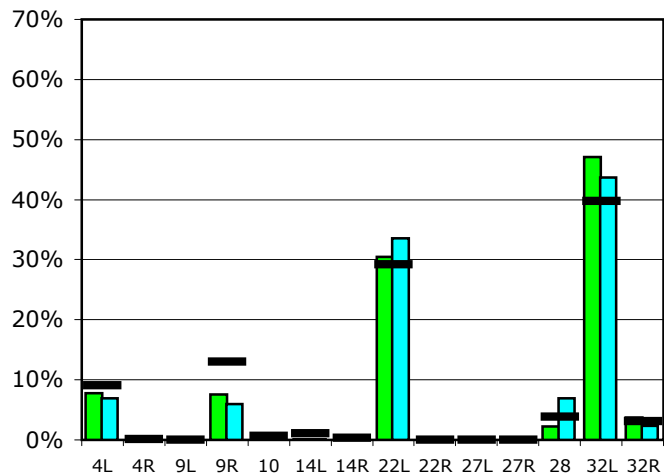
Runway Use (All hours)

Source: Airport Noise Management System (ANMS)

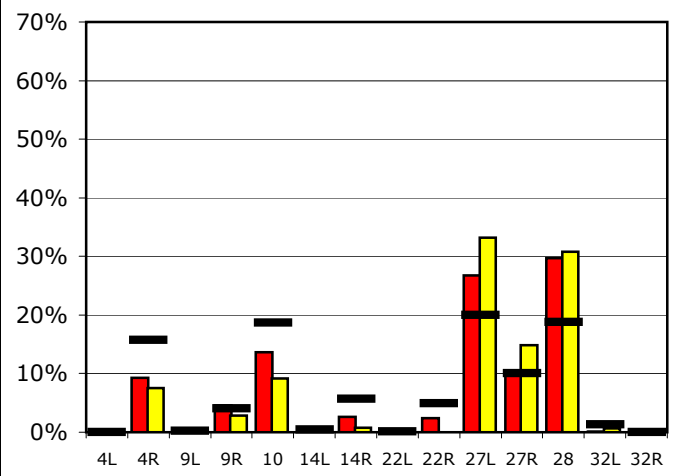
Runway Utilization

	4L	4R	9L	9R	10	14L	14R	22L	22R	27L	27R	28	32L	32R
Average Daily Departures														
February 2010	77	0	0	75	10	1	1	302	0	0	0	22	468	37
January 2010	67	0	0	58	4	1	0	325	0	0	0	67	424	23
12 Month Avg.	92	1	0	132	6	11	3	298	0	0	0	39	405	32
Average Daily Arrivals														
February 2010	0	101	2	50	148	6	29	0	26	291	110	322	1	1
January 2010	0	80	0	30	97	3	8	0	0	350	156	325	6	0
12 Month Avg.	0	174	2	45	206	4	62	1	55	221	111	208	14	0

Departures (All hours)

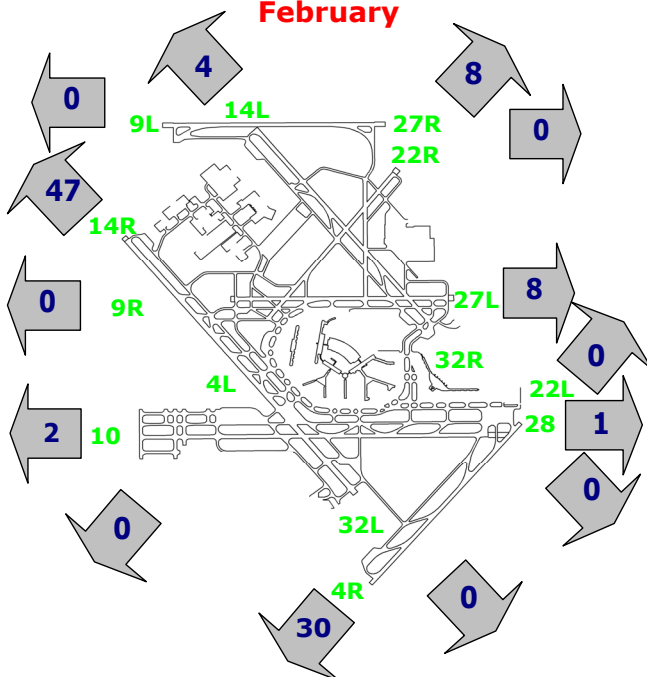


Arrivals (All hours)



Percentage Departure Utilization

February



Percentage Arrival Utilization

February

