

Runway Use Report

Chicago O'Hare International Airport

Period: December 2009

Time of Day: All hours



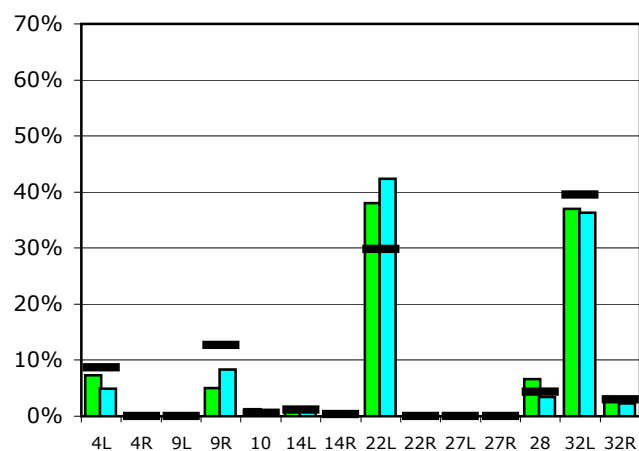
Runway Use (All hours)

Source: Airport Noise Management System (ANMS)

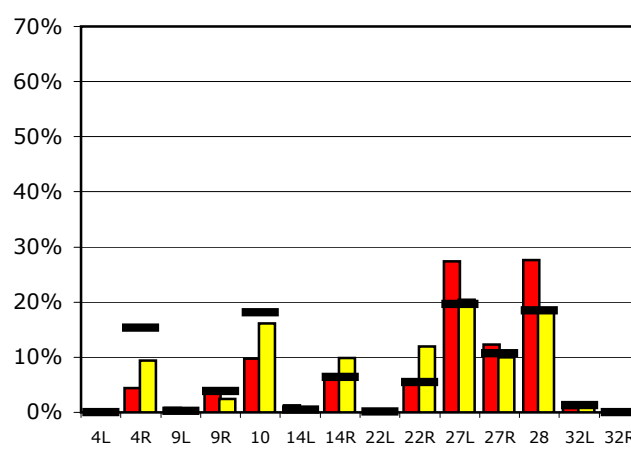
Runway Utilization

	4L	4R	9L	9R	10	14L	14R	22L	22R	27L	27R	28	32L	32R	
Average Daily Departures															
December 2009	68	0	0	47	11	9	3	352	0	1	0	61	342	32	
November 2009	46	0	0	78	6	13	4	400	0	1	0	32	342	21	
12 Month Avg.	89	1	0	129	6	12	3	305	0	0	0	45	404	30	
Average Daily Arrivals															
December 2009	0	46	8	38	102	13	66	0	57	285	128	286	9	0	
November 2009	0	102	0	26	175	3	106	1	129	221	108	201	12	0	
12 Month Avg.	0	169	2	42	201	5	70	2	61	216	118	204	14	0	

Departures (All hours)

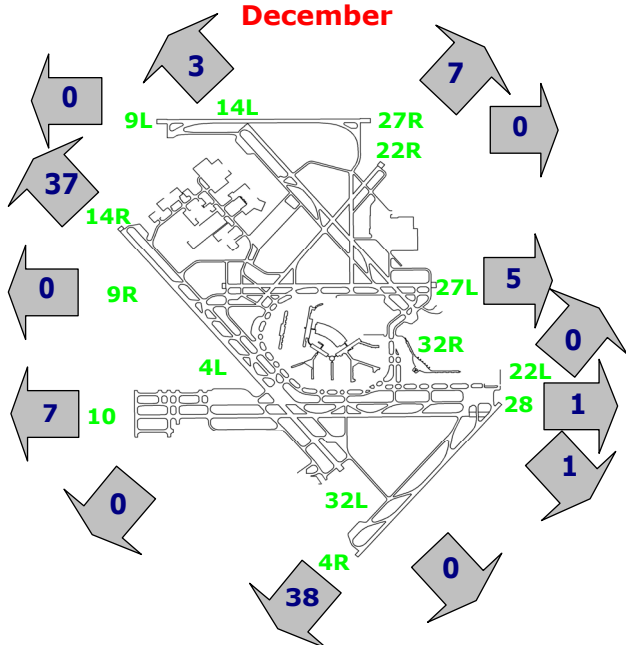


Arrivals (All hours)



Percentage Departure Utilization

December



Percentage Arrival Utilization

December

