

Runway Use Report

Chicago O'Hare International Airport

Period: December 2009

Time of Day: 10:00 p.m. to 7:00 a.m.



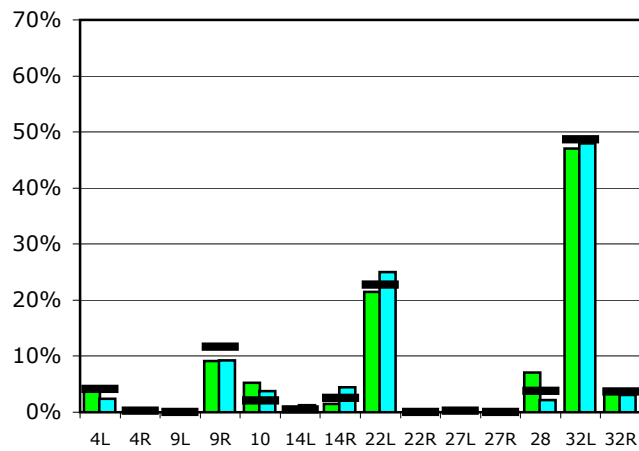
Runway Use (10 p.m. to 7 a.m.)

Source: Airport Noise Management System (ANMS)

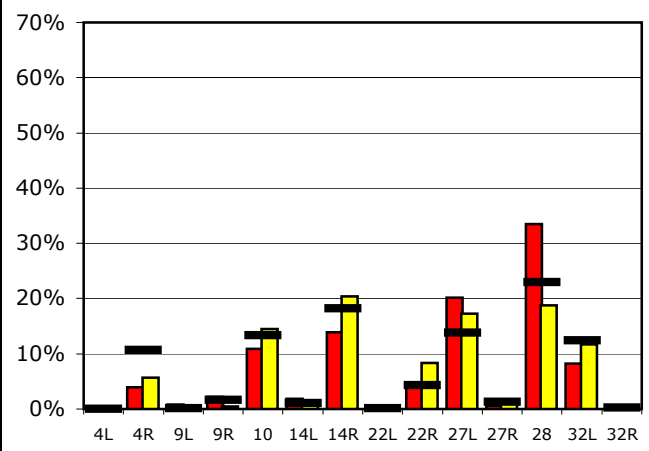
Runway Utilization

	4L	4R	9L	9R	10	14L	14R	22L	22R	27L	27R	28	32L	32R
Average Daily Departures														
December 2009	4	0	0	7	4	0	1	18	0	0	0	6	38	3
November 2009	2	0	0	6	2	1	3	16	0	0	0	1	30	2
12 Month Avg.	3	0	0	10	2	0	2	19	0	0	0	3	40	3
Average Daily Arrivals														
December 2009	0	4	1	2	11	2	15	0	4	21	1	35	9	0
November 2009	0	6	0	0	15	2	21	0	9	18	1	19	12	0
12 Month Avg.	0	12	0	2	15	1	21	0	5	16	2	26	14	0

Departures (10 p.m. to 7 a.m.)

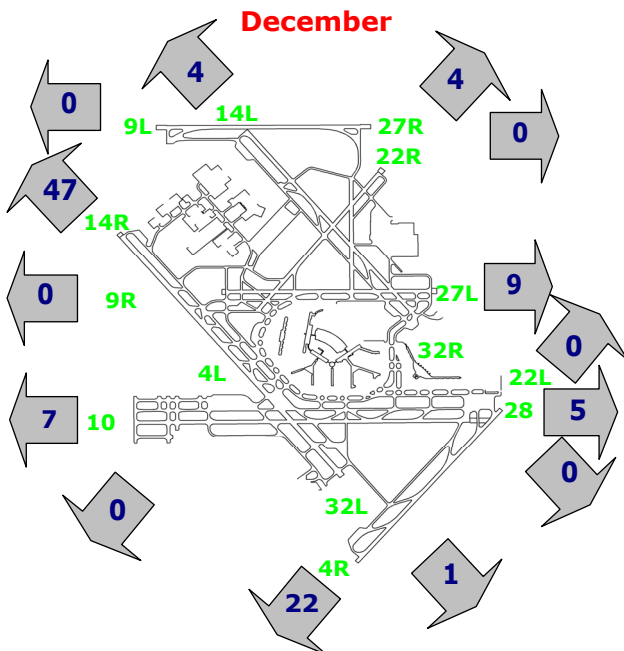


Arrivals (10 p.m. to 7 a.m.)



Percentage Departure Utilization

December



Percentage Arrival Utilization

December

