

Runway Use Report

Chicago O'Hare International Airport

Period: December 2008

Time of Day: All hours



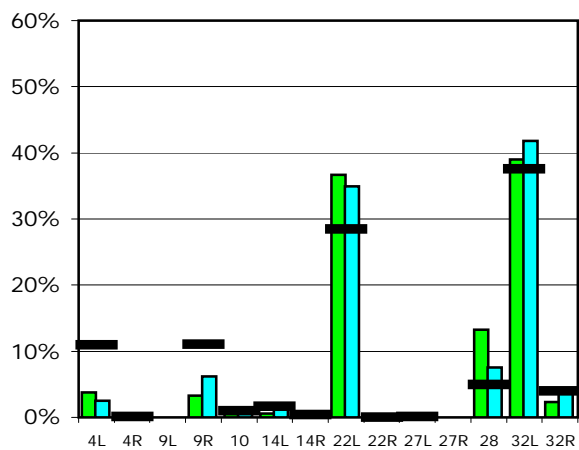
Runway Use (All hours)

Source: Airport Noise Management System (ANMS)

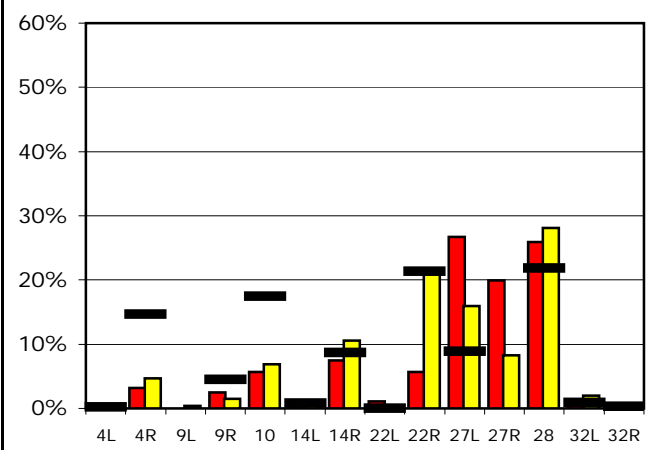
Runway Utilization¹

		4L	4R	9L	9R	10	14L	14R	22L	22R	27L	27R	28	32L	32R
Average Daily Departures															
December 2008	■	38	0	0	33	6	6	2	367	0	2	0	133	390	24
November 2008	■	26	0	0	65	6	22	2	365	0	1	0	79	437	42
12 Month Avg.	■	116	1	n/a	117	10	18	4	301	0	1	n/a	52	397	42
Average Daily Arrivals															
December 2008	■	0	33	0	26	59	9	78	12	59	278	207	270	5	4
November 2008	■	0	50	5	16	75	8	115	0	227	173	90	305	22	0
12 Month Avg.	■	2	162	n/a	49	192	9	96	0	236	98	n/a	241	10	3

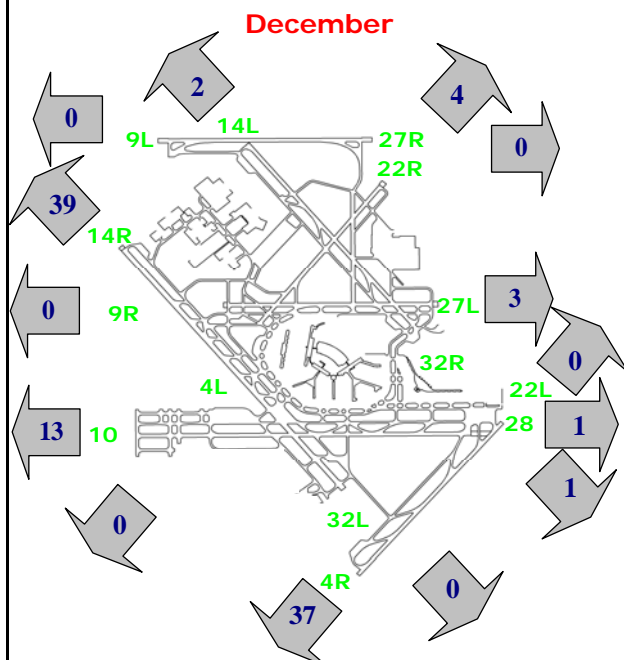
Departures (All hours)



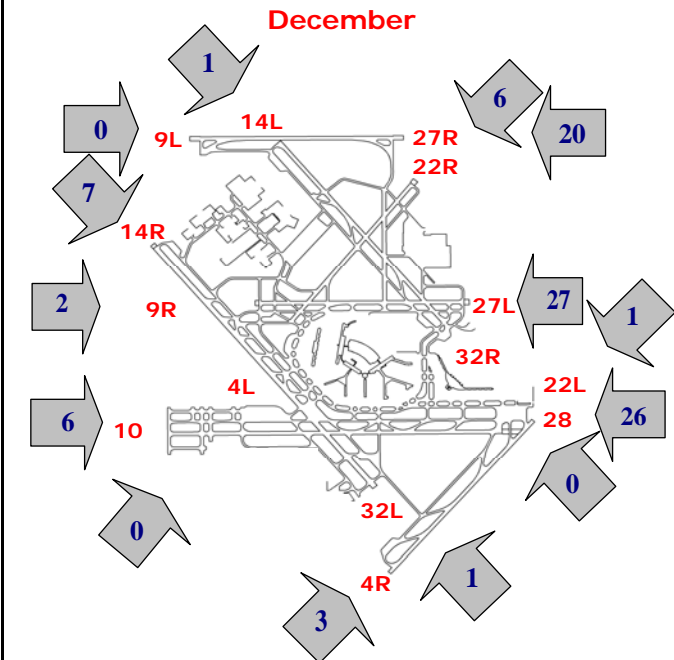
Arrivals (All hours)



Percentage Departure Utilization



Percentage Arrival Utilization



¹ Runway 9L/27R was commissioned on November 20, 2008