

Runway Use Report

Chicago O'Hare International Airport

Period: August 2009

Time of Day: All hours

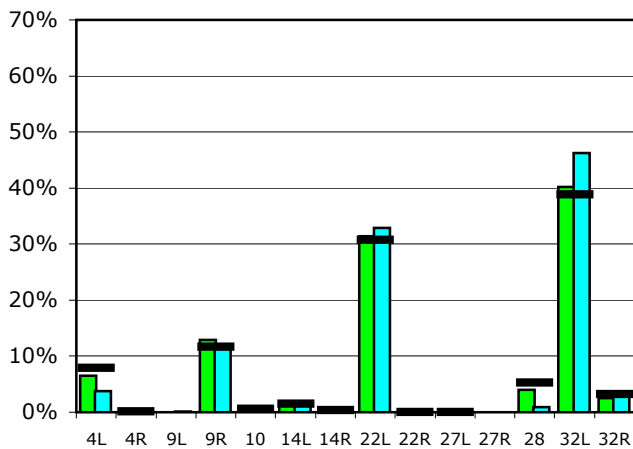


Runway Use (All hours)

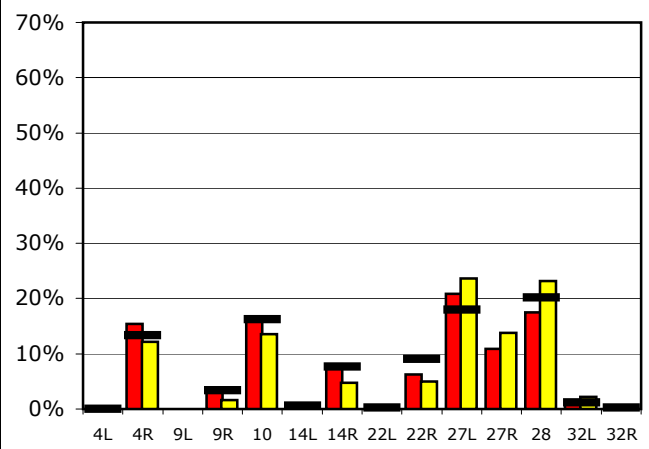
Source: Airport Noise Management System (ANMS)

		Runway Utilization ¹													
		4L	4R	9L	9R	10	14L	14R	22L	22R	27L	27R	28	32L	32R
Average Daily Departures															
August 2009		71	0	0	140	1	20	6	342	0	0	0	43	437	28
July 2009		40	0	1	122	1	13	3	355	0	0	0	10	500	36
12 Month Avg.		83	1	n/a	122	6	16	3	324	0	0	n/a	55	409	34
Average Daily Arrivals															
August 2009		0	176	0	35	189	3	94	1	71	239	125	200	13	0
July 2009		0	139	0	19	156	0	55	0	58	271	157	265	25	2
12 Month Avg.		0	147	n/a	38	179	7	85	3	100	199	n/a	223	12	2

Departures (All hours)

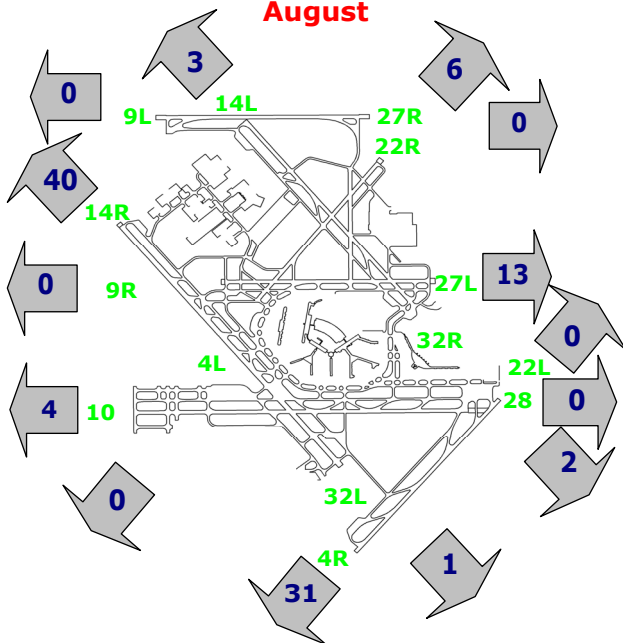


Arrivals (All hours)



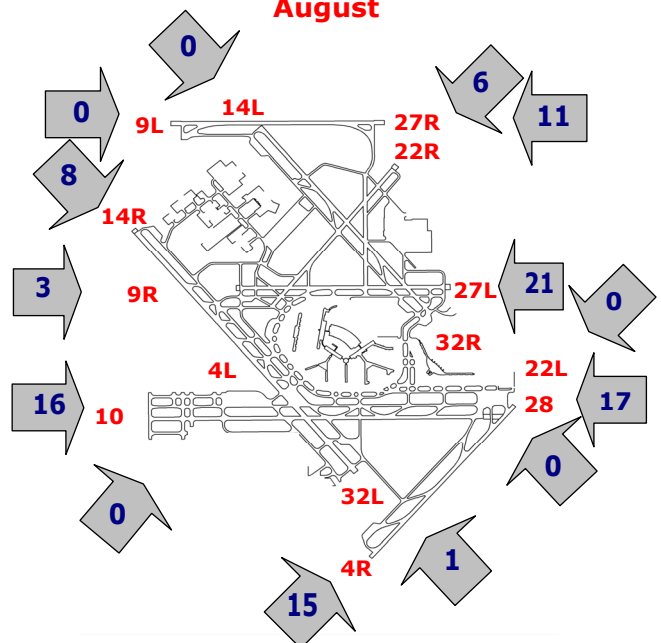
Percentage Departure Utilization

August



Percentage Arrival Utilization

August



¹ Runway 9L/27R was commissioned on November 20, 2008