

Runway Use Report

Chicago O'Hare International Airport

Period: August 2009

Time of Day: 10:00 p.m. to 7:00 a.m.

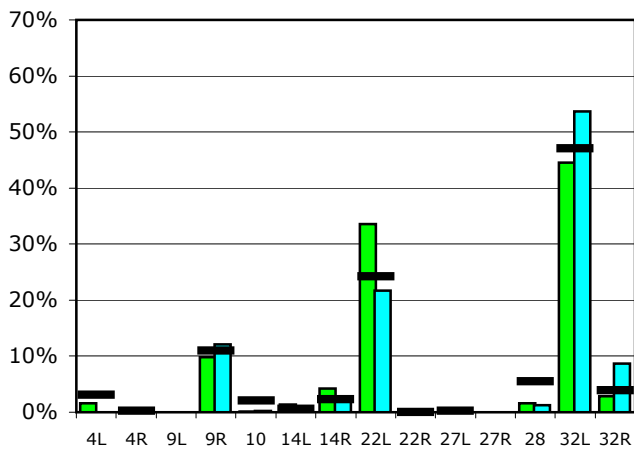


Runway Use (10 p.m. to 7 a.m.)

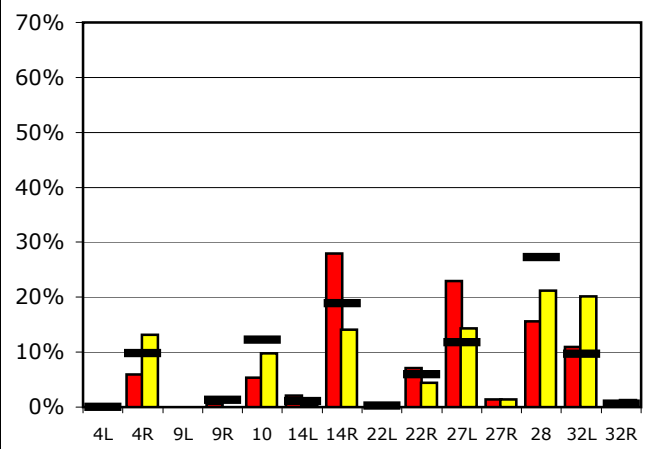
Source: Airport Noise Management System (ANMS)

		Runway Utilization ¹													
		4L	4R	9L	9R	10	14L	14R	22L	22R	27L	27R	28	32L	32R
Average Daily Departures															
August 2009		1	0	0	9	0	1	4	31	0	0	0	1	41	3
July 2009		0	0	0	10	0	0	2	18	0	0	0	1	44	7
12 Month Avg.		3	0	n/a	10	2	0	2	21	0	0	n/a	5	41	3
Average Daily Arrivals															
August 2009		0	7	0	1	7	3	34	0	9	28	2	19	13	0
July 2009		0	16	0	0	12	0	17	0	5	17	2	26	25	2
12 Month Avg.		0	11	n/a	1	14	1	22	0	7	14	n/a	31	11	1

Departures (10 p.m. to 7 a.m.)

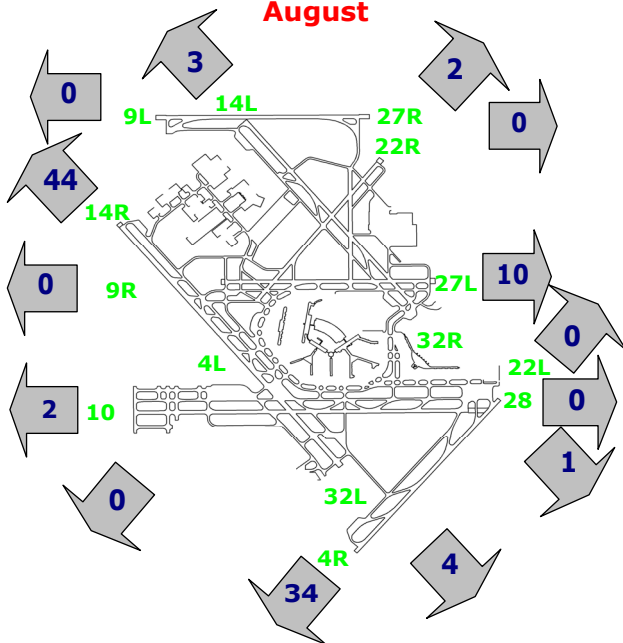


Arrivals (10 p.m. to 7 a.m.)



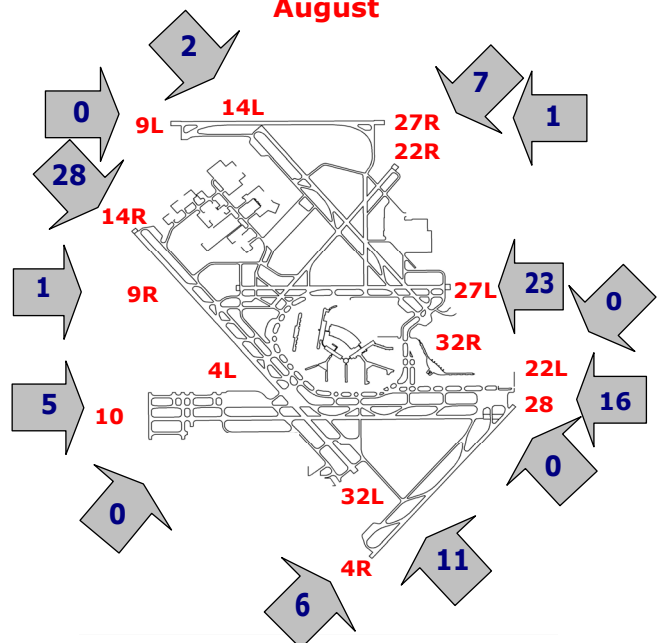
Percentage Departure Utilization

August



Percentage Arrival Utilization

August



¹ Runway 9L/27R was commissioned on November 20, 2008