

Runway Use Report

Chicago O'Hare International Airport

Period: August 2008

Time of Day: All hours



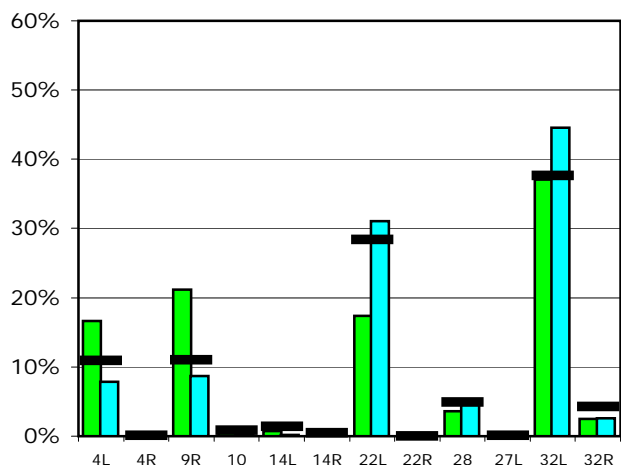
Runway Use (All hours)

Source: Airport Noise Management System (ANMS)

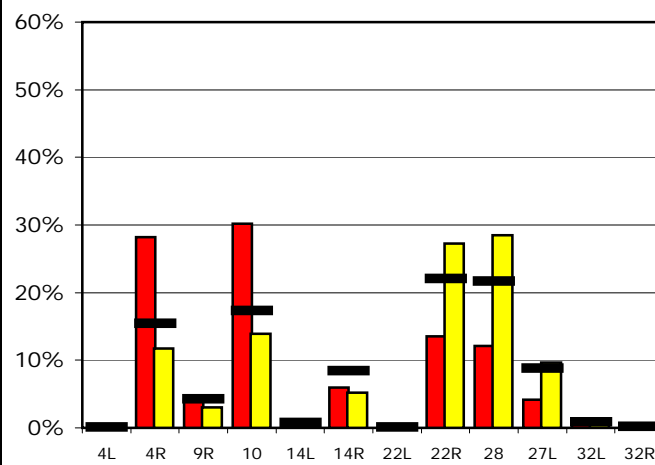
Runway Utilization

	4L	4R	9R	10	14L	14R	22L	22R	28	27L	32L	32R
Average Daily Departures												
August 2008	213	0	272	7	10	4	223	0	46	0	475	32
July 2008	94	0	103	4	2	2	370	0	54	0	532	31
12 Month Avg.	129	1	130	10	17	5	335	0	58	1	444	50
Average Daily Arrivals												
August 2008	0	382	57	409	0	81	1	183	164	57	19	1
July 2008	2	145	37	172	1	65	0	338	353	119	7	0
12 Month Avg.	1	191	53	214	9	104	1	272	268	108	11	3

Departures (All hours)

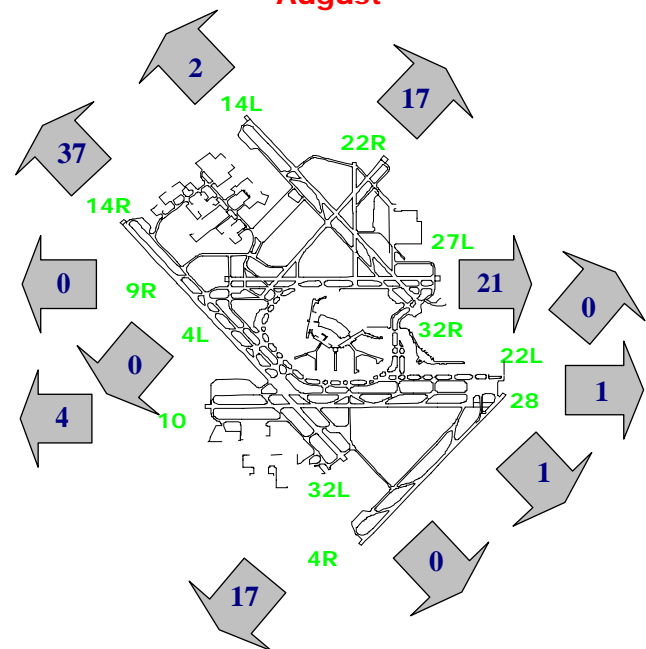


Arrivals (All hours)



Percentage Departure Utilization

August



Percentage Arrival Utilization

August

