

Runway Use Report

Chicago O'Hare International Airport

Period: April 2010

Time of Day: All hours



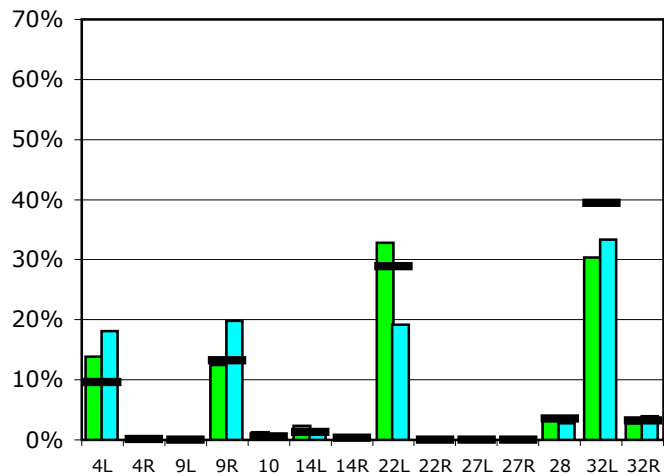
Runway Use (All hours)

Source: Airport Noise Management System (ANMS)

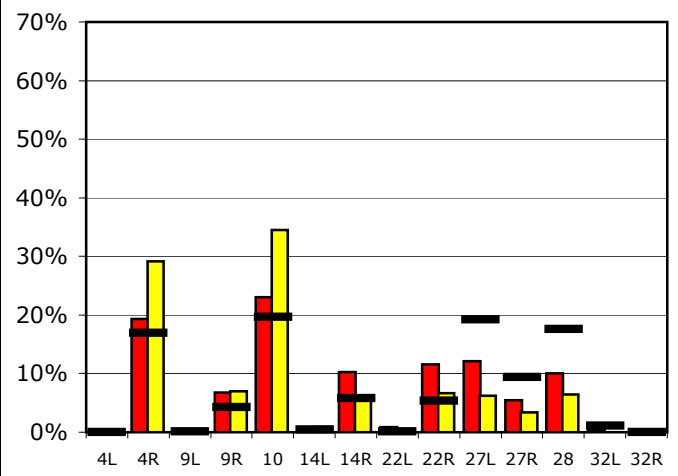
Runway Utilization

	4L	4R	9L	9R	10	14L	14R	22L	22R	27L	27R	28	32L	32R
Average Daily Departures														
April 2010	144	0	0	129	13	24	3	339	0	1	0	37	314	29
March 2010	177	0	0	193	9	17	1	187	0	0	0	27	325	38
12 Month Avg.	97	1	0	133	6	13	3	292	0	0	0	35	398	32
Average Daily Arrivals														
April 2010	0	225	0	79	270	3	120	10	136	142	64	117	3	0
March 2010	0	334	0	79	395	11	65	1	76	71	38	74	0	0
12 Month Avg.	0	189	1	48	218	5	64	1	59	214	104	196	12	0

Departures (All hours)

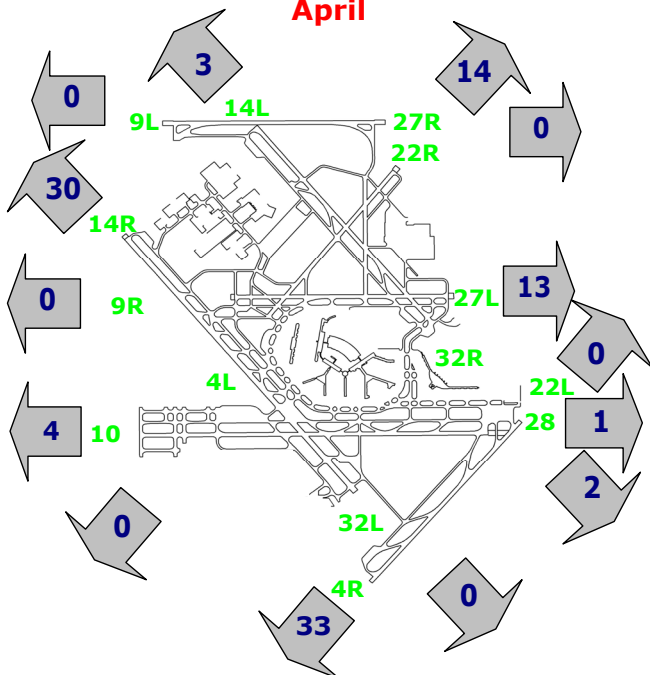


Arrivals (All hours)



Percentage Departure Utilization

April



Percentage Arrival Utilization

April

