

Runway Use Report

Chicago O'Hare International Airport

Period: April 2010

Time of Day: 10:00 p.m. to 7:00 a.m.



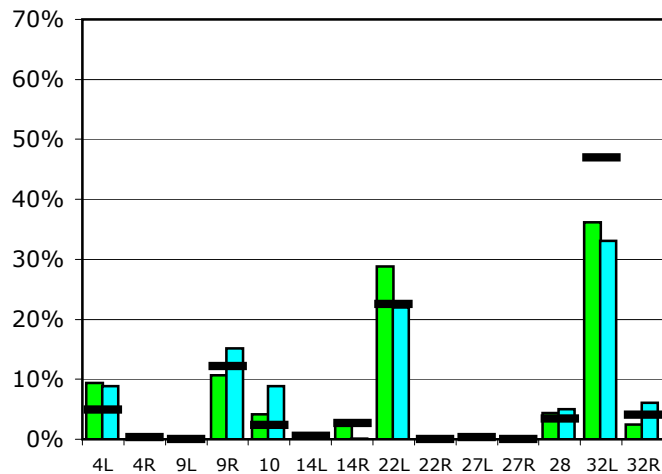
Runway Use (10 p.m. to 7 a.m.)

Source: Airport Noise Management System (ANMS)

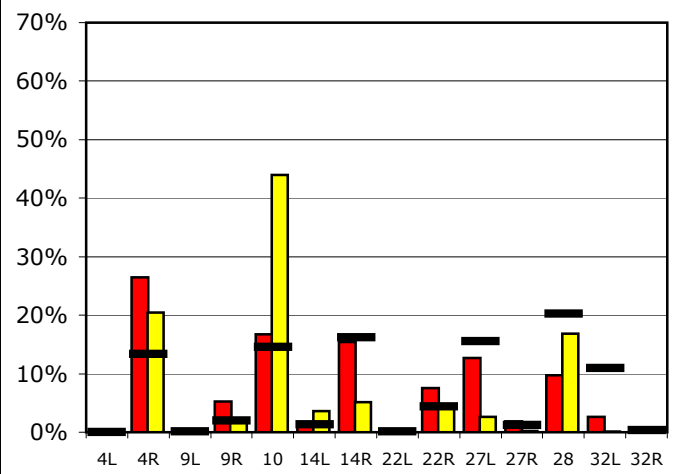
Runway Utilization

	4L	4R	9L	9R	10	14L	14R	22L	22R	27L	27R	28	32L	32R
Average Daily Departures														
April 2010	9	0	0	10	4	1	3	27	0	0	0	4	34	2
March 2010	7	0	0	12	7	0	0	18	0	0	0	4	26	5
12 Month Avg.	4	0	0	10	2	0	2	18	0	0	0	3	38	3
Average Daily Arrivals														
April 2010	0	33	0	6	21	2	19	0	9	16	2	12	3	0
March 2010	0	24	0	2	52	4	6	0	6	3	0	20	0	0
12 Month Avg.	0	15	0	2	16	2	18	0	5	17	1	23	12	0

Departures (10 p.m. to 7 a.m.)

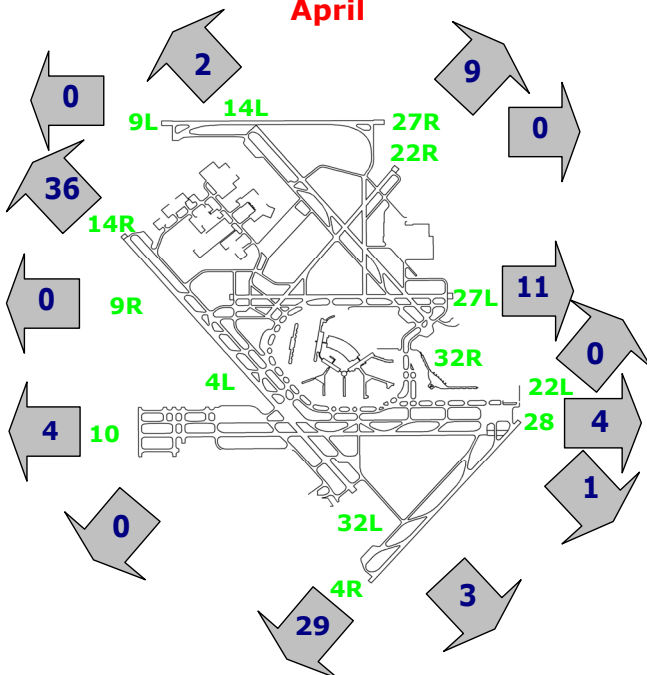


Arrivals (10 p.m. to 7 a.m.)



Percentage Departure Utilization

April



Percentage Arrival Utilization

April

