

Runway Use Report

Chicago O'Hare International Airport

Period: April 2009

Time of Day: All hours



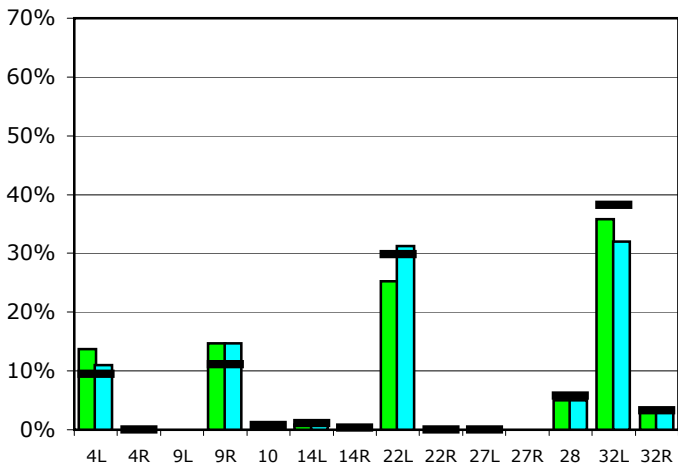
Runway Use (All hours)

Source: Airport Noise Management System (ANMS)

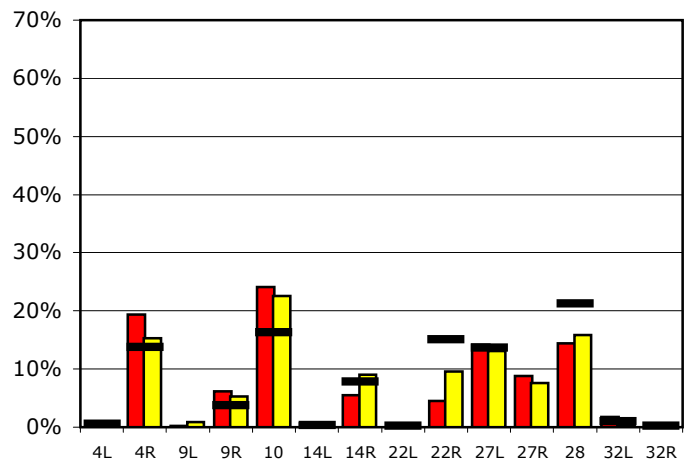
Runway Utilization¹

| | 4L | 4R | 9L | 9R | 10 | 14L | 14R | 22L | 22R | 27L | 27R | 28 | 32L | 32R |
|---------------------------------|-----|-----|-----|-----|-----|-----|-----|-----|-----|-----|-----|-----|-----|-----|
| Average Daily Departures | | | | | | | | | | | | | | |
| April 2009 | 145 | 0 | 0 | 155 | 11 | 9 | 2 | 267 | 0 | 0 | 0 | 53 | 377 | 35 |
| March 2009 | 116 | 0 | 0 | 155 | 13 | 17 | 1 | 329 | 0 | 0 | 0 | 52 | 338 | 33 |
| 12 Month Avg. | 103 | 1 | n/a | 121 | 9 | 12 | 4 | 325 | 0 | 0 | n/a | 63 | 416 | 35 |
| Average Daily Arrivals | | | | | | | | | | | | | | |
| April 2009 | 0 | 215 | 2 | 68 | 269 | 7 | 61 | 4 | 50 | 158 | 99 | 160 | 20 | 0 |
| March 2009 | 0 | 170 | 10 | 58 | 250 | 2 | 100 | 6 | 106 | 145 | 85 | 176 | 3 | 0 |
| 12 Month Avg. | 7 | 157 | n/a | 42 | 185 | 4 | 89 | 2 | 171 | 155 | n/a | 242 | 11 | 2 |

Departures (All hours)

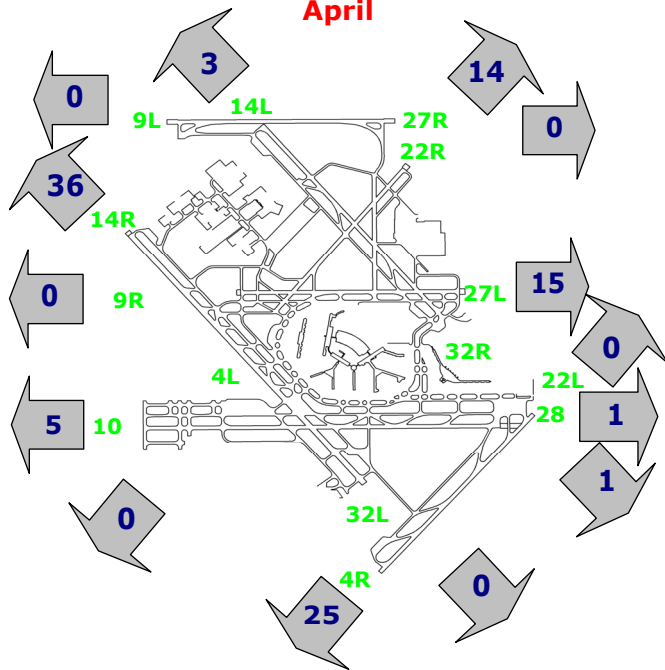


Arrivals (All hours)



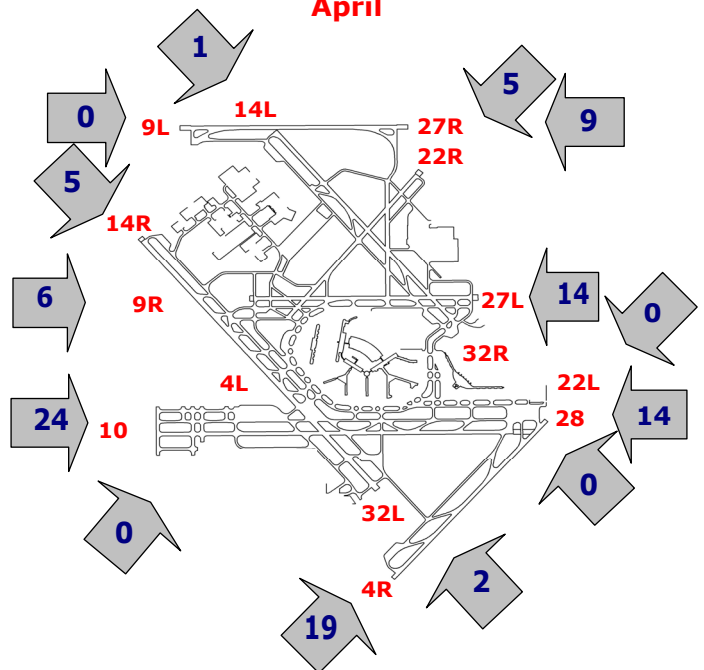
Percentage Departure Utilization

April



Percentage Arrival Utilization

April



¹ Runway 9L/27R was commissioned on November 20, 2008