

Runway Use Report

Chicago O'Hare International Airport

Period: April 2009

Time of Day: 10:00 p.m. to 7:00 a.m.



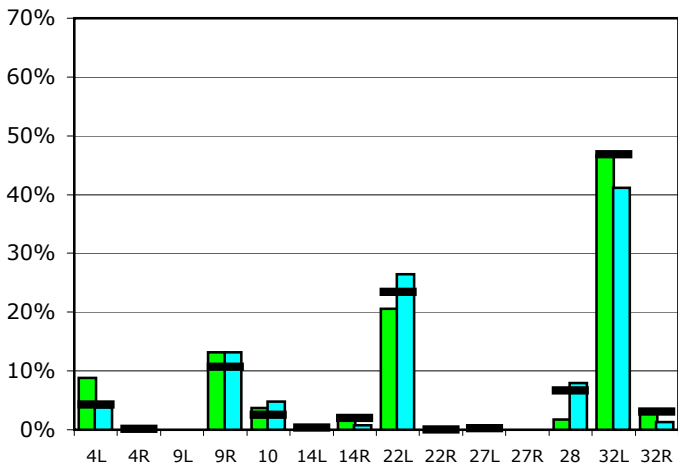
Runway Use (10 p.m. to 7 a.m.)

Source: Airport Noise Management System (ANMS)

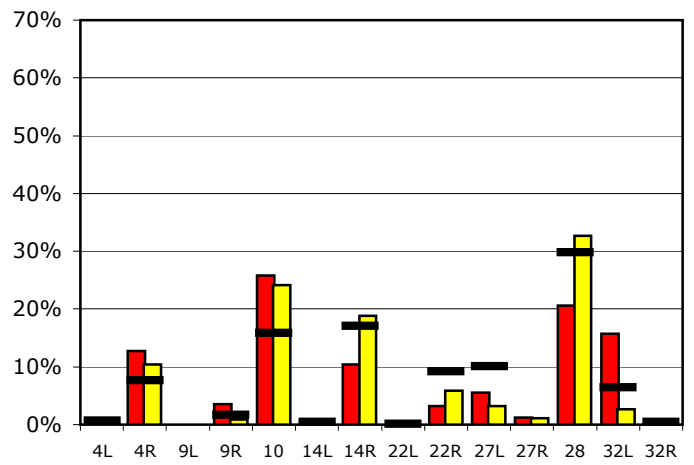
Runway Utilization¹

	4L	4R	9L	9R	10	14L	14R	22L	22R	27L	27R	28	32L	32R
Average Daily Departures														
April 2009	8	0	0	12	3	0	2	18	0	0	0	2	42	3
March 2009	3	0	0	12	4	0	1	24	0	0	0	7	37	1
12 Month Avg.	4	0	n/a	10	2	0	2	22	0	0	n/a	6	45	3
Average Daily Arrivals														
April 2009	0	16	0	4	32	1	13	0	4	7	1	26	20	0
March 2009	0	12	0	1	29	0	23	0	7	4	1	39	3	0
12 Month Avg.	1	9	n/a	2	19	0	21	0	11	12	n/a	37	8	1

Departures (10 p.m. to 7 a.m.)

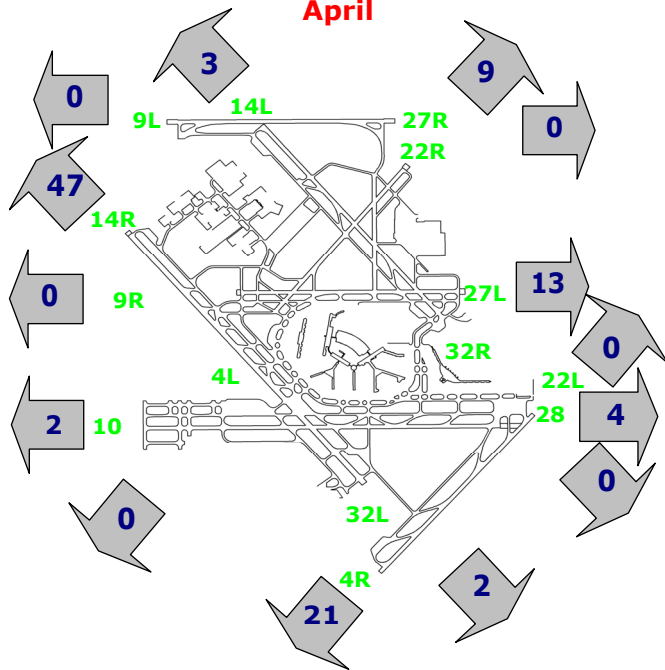


Arrivals (10 p.m. to 7 a.m.)



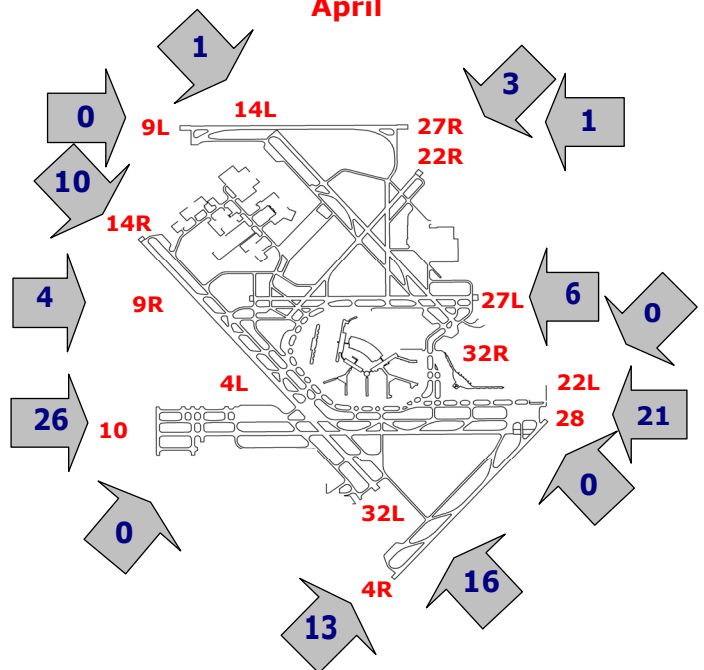
Percentage Departure Utilization

April



Percentage Arrival Utilization

April



¹ Runway 9L/27R was commissioned on November 20, 2008