

*Fly Quiet Adherence Report
4th Quarter 2003*

Chicago O'Hare International Airport



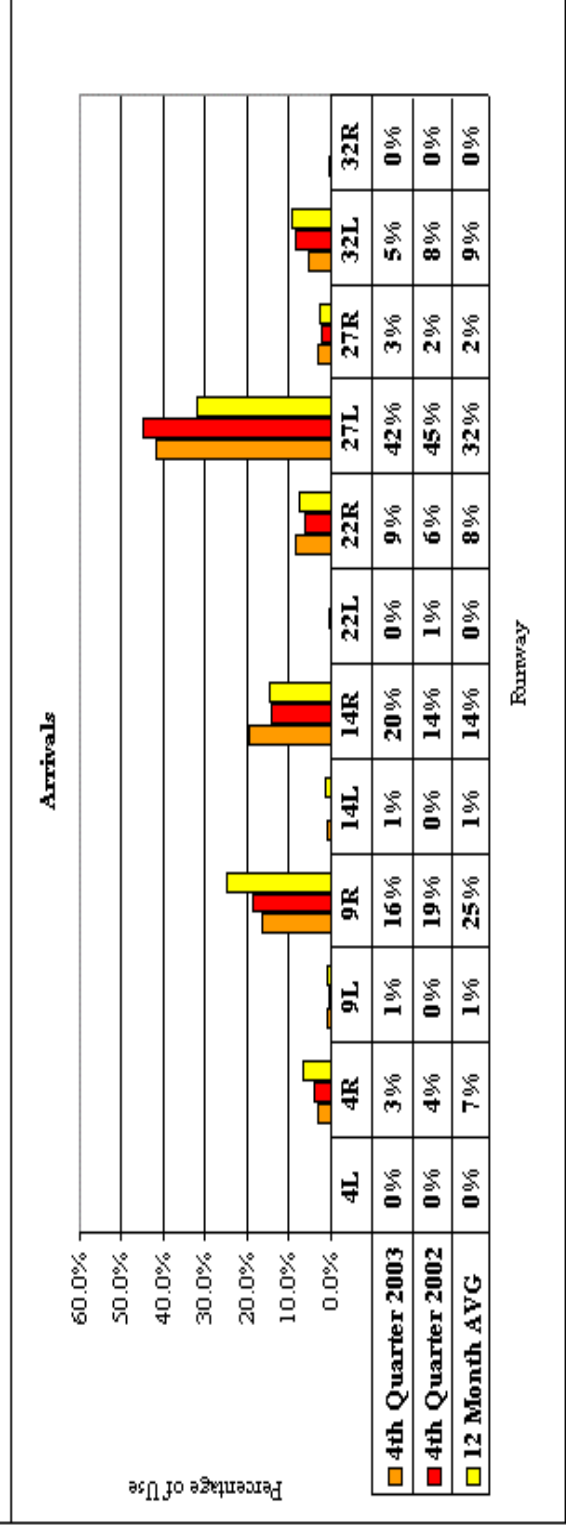
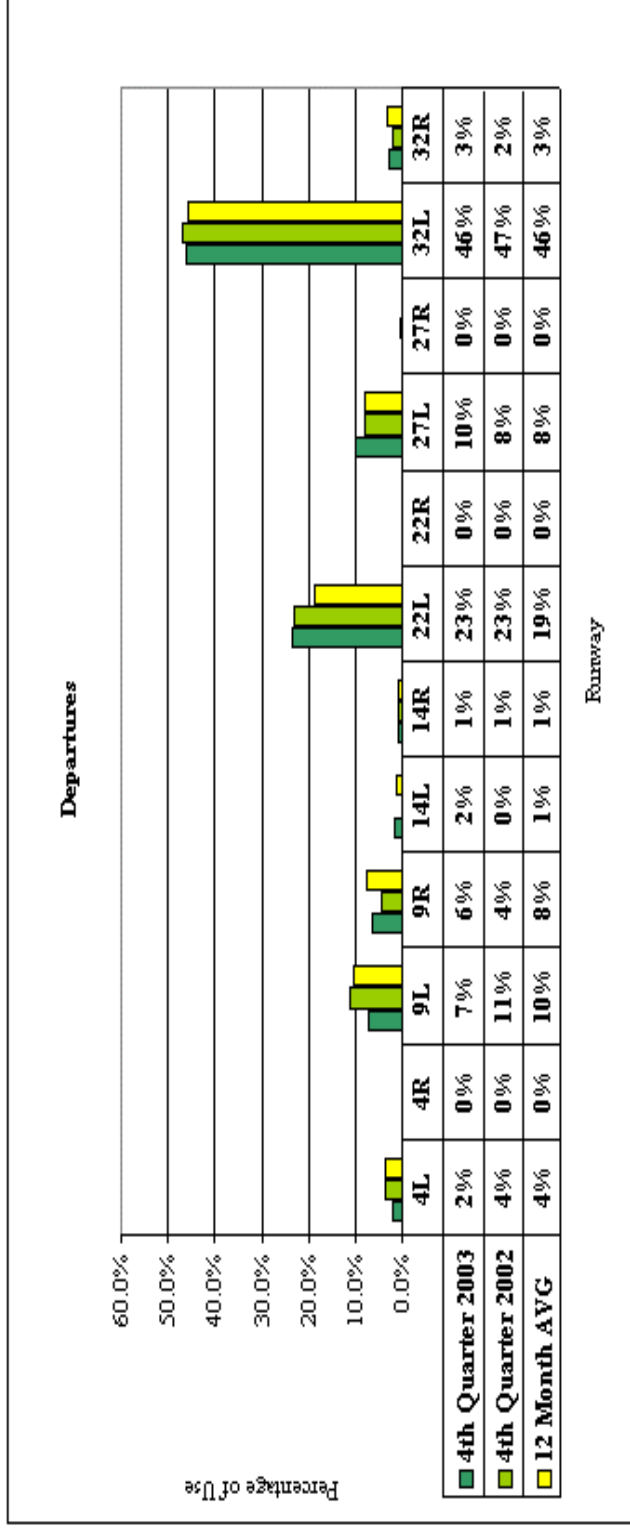
City of Chicago Department of Aviation

*Visit the Community Resource Center on the Internet at
<http://www.chicagoairports.com>*



**Chicago O'Hare International Airport
Period: 4th Quarter 2003**

Quarterly Nighttime Runway Use (10 p.m. to 7 a.m.)



Source: Chicago Airport Noise Monitoring System

Chicago O'Hare International Airport
Period: 4th Quarter 2003



Quarterly Aircraft Ground Run-ups

All Airlines - Run-ups

| Location | 4th Quarter 2003 | | 4th Quarter 2002 | | 12 Month Avg. ¹ | |
|--------------|------------------|-------------|------------------|-------------|----------------------------|-------------|
| | Run-ups | Percentage | Run-ups | Percentage | Run-ups | Percentage |
| GRE | 131 | 73% | 172 | 74% | 171 | 72% |
| 9R Hold Pad | 48 | 27% | 55 | 24% | 62 | 26% |
| 32L Hold Pad | 1 | 1% | 5 | 2% | 3 | 1% |
| Total | 180 | 100% | 232 | 100% | 236 | 100% |

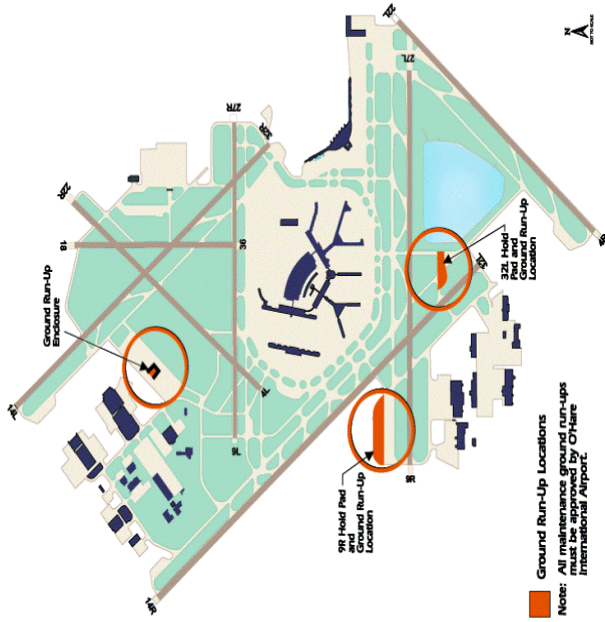
| Location | 4th Quarter 2003 | | 4th Quarter 2002 | | 12 Month Avg. ¹ | |
|--------------|------------------|-------------|------------------|-------------|----------------------------|-------------|
| | Run-ups | Percentage | Run-ups | Percentage | Run-ups | Percentage |
| GRE | 51 | 89% | 78 | 89% | 79 | 85% |
| 9R Hold Pad | 6 | 11% | 10 | 11% | 13 | 14% |
| 32L Hold Pad | 0 | 0% | 0 | 0% | 1 | 1% |
| Total | 57 | 100% | 88 | 100% | 93 | 100% |

| Location | 4th Quarter 2003 | | 4th Quarter 2002 | | 12 Month Avg. ¹ | |
|--------------|------------------|-------------|------------------|-------------|----------------------------|-------------|
| | Run-ups | Percentage | Run-ups | Percentage | Run-ups | Percentage |
| GRE | 35 | 100% | 21 | 95% | 20 | 100% |
| 9R Hold Pad | 0 | 0% | 0 | 0% | 0 | 0% |
| 32L Hold Pad | 0 | 0% | 1 | 5% | 0 | 0% |
| Total | 35 | 100% | 22 | 100% | 20 | 100% |

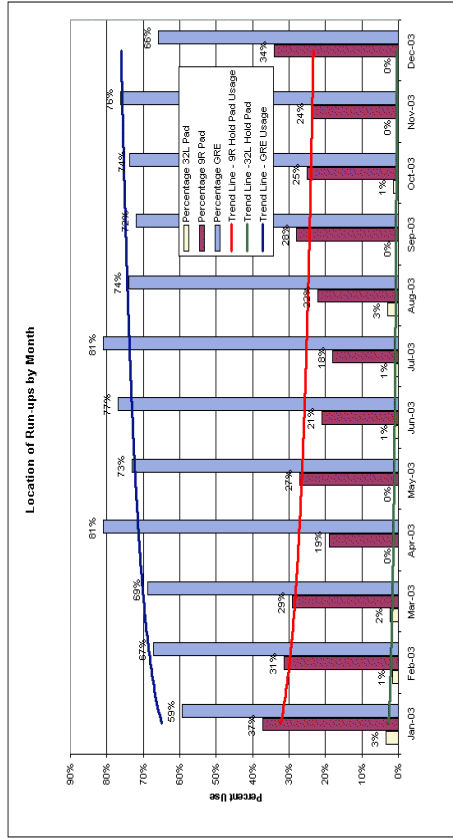
| Location | 4th Quarter 2003 | | 4th Quarter 2002 | | 12 Month Avg. ¹ | |
|--------------|------------------|-------------|------------------|-------------|----------------------------|-------------|
| | Run-ups | Percentage | Run-ups | Percentage | Run-ups | Percentage |
| GRE | 25 | 57% | 40 | 66% | 35 | 56% |
| 9R Hold Pad | 19 | 43% | 20 | 33% | 26 | 42% |
| 32L Hold Pad | 0 | 0% | 1 | 2% | 1 | 2% |
| Total | 44 | 100% | 61 | 100% | 62 | 100% |

| Location | 4th Quarter 2003 | | 4th Quarter 2002 | | 12 Month Avg. ¹ | |
|--------------|------------------|-------------|------------------|-------------|----------------------------|-------------|
| | Run-ups | Percentage | Run-ups | Percentage | Run-ups | Percentage |
| GRE | 18 | 50% | 30 | 65% | 28 | 61% |
| 9R Hold Pad | 18 | 50% | 16 | 35% | 17 | 37% |
| 32L Hold Pad | 0 | 0% | 0 | 0% | 1 | 2% |
| Total | 36 | 100% | 46 | 100% | 46 | 100% |

| Location | 4th Quarter 2003 | | 4th Quarter 2002 | | 12 Month Avg. ¹ | |
|--------------|------------------|-------------|------------------|-------------|----------------------------|-------------|
| | Run-ups | Percentage | Run-ups | Percentage | Run-ups | Percentage |
| GRE | 2 | 25% | 3 | 20% | 8 | 53% |
| 9R Hold Pad | 5 | 63% | 9 | 60% | 6 | 40% |
| 32L Hold Pad | 1 | 13% | 3 | 20% | 1 | 7% |
| Total | 8 | 100% | 15 | 100% | 15 | 100% |



Ground Run-Up Locations
Note: All maintenance ground run-ups must be approved by O'Hare International Airport.



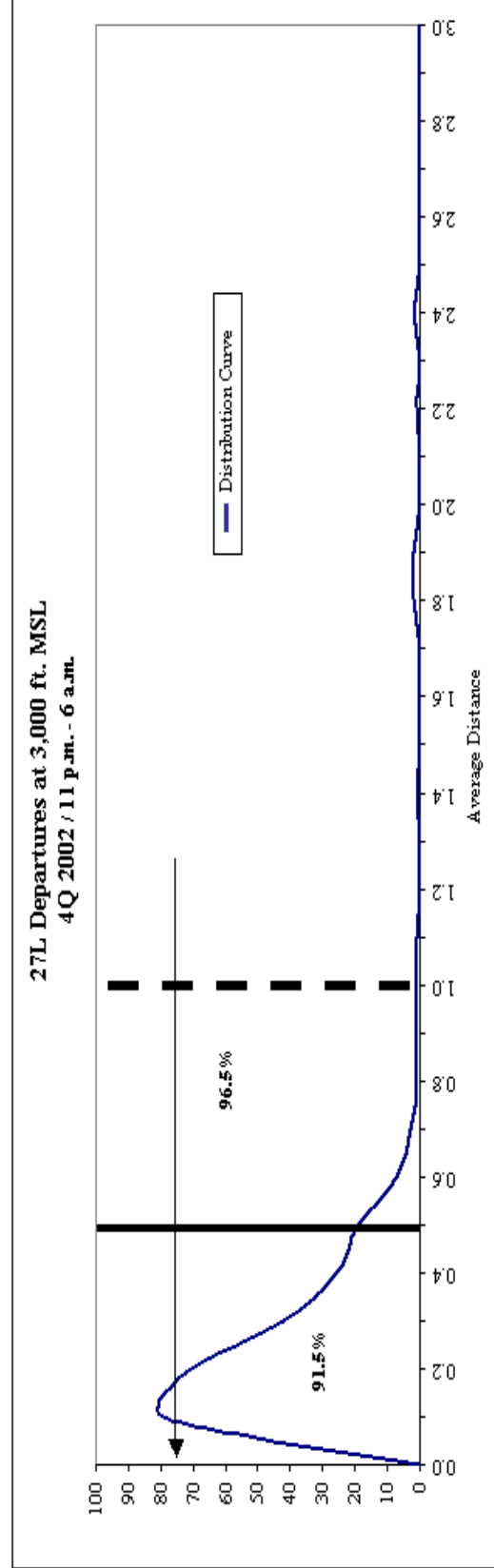
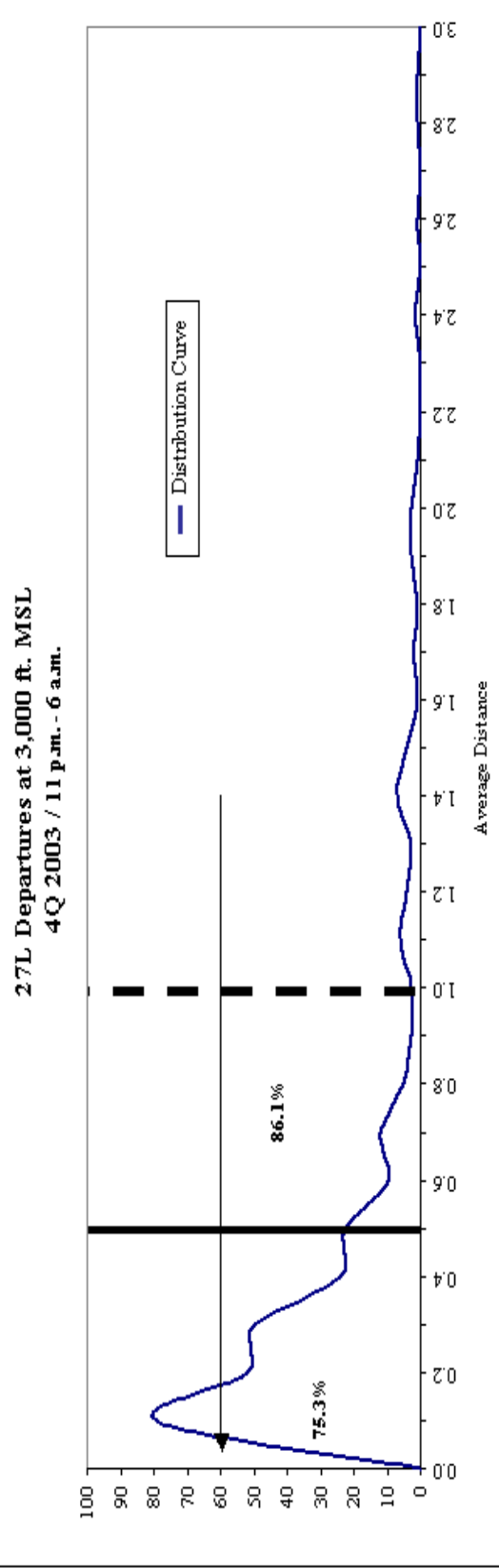
1. 12 Month Average equals the average of 1Q 2003, 2Q 2003, 3Q 2003 and 4Q 2003.

Source: Chicago Department of Aviation, Ground Run-up Logs

Preferential Flight Track Summary
 Runway 27L Departures



| Airline | 4th Quarter 2003 11 p.m. - 6 a.m. | | 4th Quarter 2002 11 p.m. - 6 a.m. | |
|-----------------------------|--------------------------------------|------------------|--------------------------------------|------------------|
| | Departures | Average Distance | Departures | Average Distance |
| American Airlines | 21 | 0.50 | 17 | 0.32 |
| Asiana Airlines | 3 | 0.44 | 4 | 0.46 |
| Airborne Express | 14 | 0.51 | 13 | 0.33 |
| Air France | 10 | 0.24 | 8 | 0.16 |
| Air Jamaica Limited | -- | -- | 2 | 1.17 |
| America West Airlines | 1 | 1.01 | 1 | 0.33 |
| United Express | 18 | 1.66 | -- | -- |
| ACA/United Express | 8 | 0.35 | 2 | 0.25 |
| Atlantic Southeast Airlines | 2 | 1.01 | -- | -- |
| China Airlines | 1 | 0.34 | -- | -- |
| Air China | 3 | 0.28 | 2 | 1.14 |
| China Cargo Airlines | 3 | 0.10 | -- | -- |
| Kalitta Cargo | 3 | 0.23 | 2 | 0.18 |
| Continental Airlines | 1 | 0.25 | -- | -- |
| Cathay Pacific | 4 | 0.61 | 7 | 0.19 |
| Delta Air Lines | 1 | 0.01 | -- | -- |
| DHL | 9 | 0.50 | 4 | 0.20 |
| Lufthansa German Airlines | 4 | 0.24 | 1 | 0.17 |
| American Eagle | 4 | 1.16 | 2 | 0.12 |
| Federal Express | 42 | 0.30 | 32 | 0.31 |
| Atlas Air | 3 | 0.67 | 3 | 0.15 |
| Japan Air Lines | 6 | 0.29 | 5 | 0.27 |
| Korean Air | 10 | 0.20 | 12 | 0.14 |
| Mexicana | 39 | 0.32 | 47 | 0.18 |
| Nippon Cargo Airlines | 4 | 0.11 | 2 | 0.51 |
| Spirit Airlines | 6 | 0.68 | 1 | 0.32 |
| Northwest Airlines | 11 | 0.33 | 4 | 0.21 |
| Ryan International | 21 | 0.17 | 29 | 0.27 |
| Polar Air Cargo | 4 | 0.22 | 7 | 0.21 |
| Scandinavian Airlines | -- | -- | -- | -- |
| United Airlines | 13 | 0.40 | 4 | 0.41 |
| UPS | 13 | 0.19 | 9 | 0.20 |
| USAirways | -- | -- | -- | -- |
| Overall | 282 | 0.44 | 220 | 0.33 |



Nighttime Hours 11 p.m. to 6 a.m.: In 4Q 2003, 75.3% of departures were within 1/2 nautical mile and 86.1% were within 1 nautical mile of the preferred flight track.
In 4Q 2002, 91.5% of departures were within 1/2 nautical mile and 96.5% were within 1 nautical mile of the preferred flight track.

Chicago O'Hare International Airport
 Period: 4th Quarter 2003

Preferential Flight Track Summary
 Runway 32L Departures



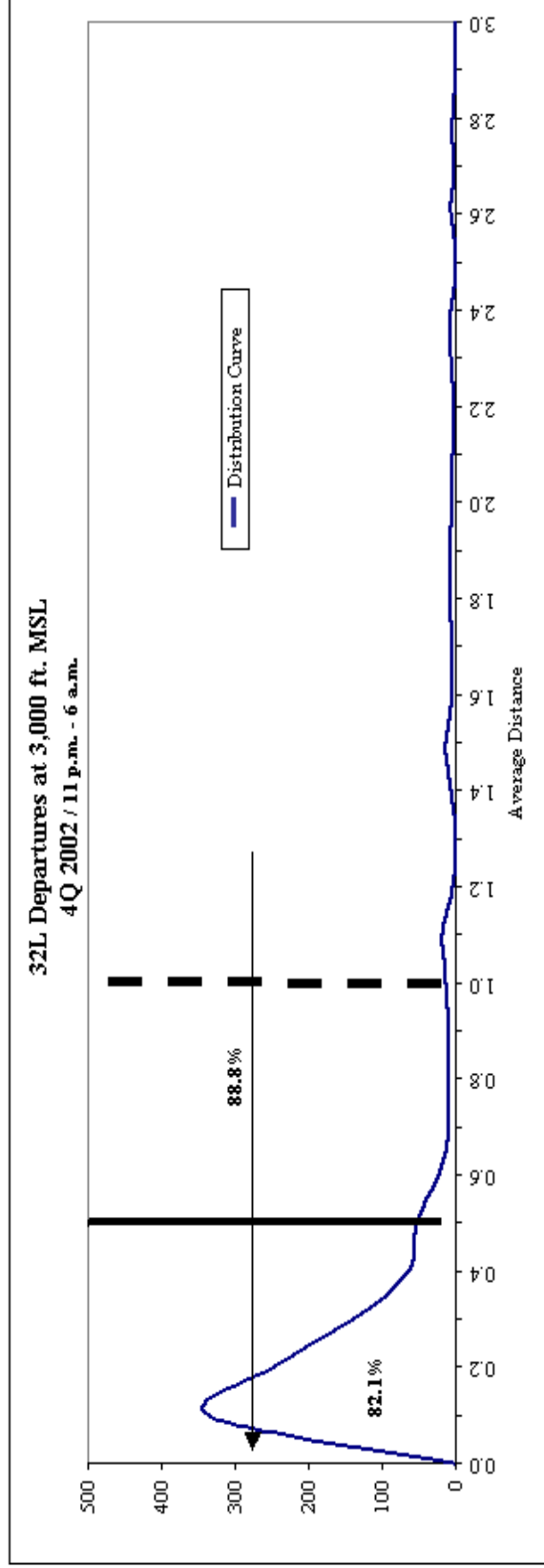
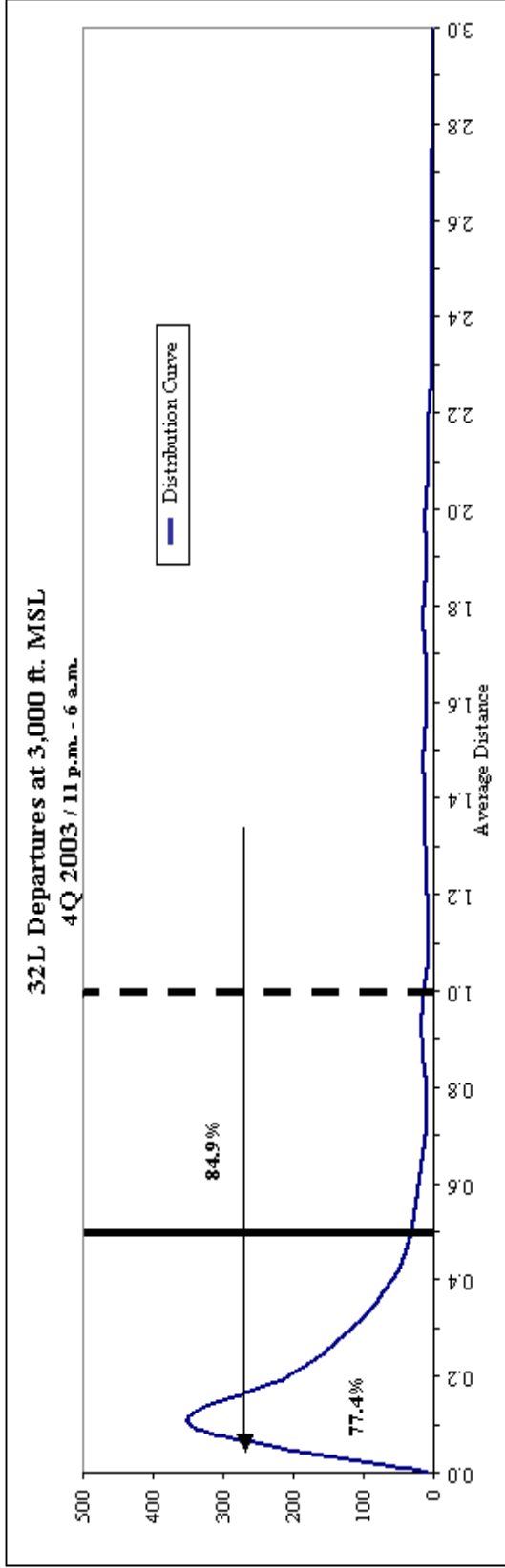
| Airline | 4th Quarter 2003 | |
|-----------------------------|------------------|------------------|
| | Departures | Average Distance |
| American Airlines | 90 | 0.88 |
| Asiana Airlines | 17 | 0.19 |
| Airborne Express | 37 | 0.21 |
| Air France | 35 | 0.62 |
| Air Jamaica Limited | -- | -- |
| America West Airlines | 5 | 0.86 |
| United Express | 41 | 0.99 |
| ACA/United Express | 53 | 0.72 |
| Atlantic Southeast Airlines | -- | -- |
| China Airlines | 5 | 0.08 |
| Air China | 19 | 0.21 |
| China Cargo Airlines | 7 | 0.12 |
| Kalitta Cargo | 7 | 0.14 |
| Continental Airlines | 6 | 0.32 |
| Cathay Pacific | 25 | 0.29 |
| Delta Air Lines | 1 | 0.04 |
| DHL | 24 | 0.15 |
| Lufthansa German Airlines | 18 | 0.26 |
| American Eagle | 34 | 1.02 |
| Federal Express | 156 | 0.31 |
| Atlas Air | 14 | 0.40 |
| Japan Air Lines | 24 | 0.16 |
| Korean Air | 27 | 0.11 |
| Mexicana | 27 | 0.29 |
| Nippon Cargo Airlines | 23 | 0.18 |
| Spirit Airlines | 10 | 0.87 |
| Northwest Airlines | 54 | 0.21 |
| Ryan International | 61 | 0.17 |
| Polar Air Cargo | 11 | 0.21 |
| Scandinavian Airlines | 2 | 0.05 |
| United Airlines | 53 | 0.95 |
| UPS | 56 | 0.15 |
| USAirways | 1 | 0.06 |
| Overall | 943 | 0.36 |

| Airline | 4th Quarter 2002 | |
|-----------------------------|------------------|------------------|
| | Departures | Average Distance |
| American Airlines | 86 | 0.80 |
| Asiana Airlines | 11 | 0.14 |
| Airborne Express | 29 | 0.30 |
| Air France | 38 | 0.45 |
| Air Jamaica Limited | 1 | 0.07 |
| America West Airlines | 5 | 0.23 |
| United Express | 3 | 0.61 |
| ACA/United Express | 27 | 0.88 |
| Atlantic Southeast Airlines | -- | -- |
| China Airlines | 2 | 0.13 |
| Air China | 14 | 0.24 |
| China Cargo Airlines | 0 | 0.00 |
| Kalitta Cargo | 2 | 0.20 |
| Continental Airlines | 4 | 0.12 |
| Cathay Pacific | 37 | 0.33 |
| Delta Air Lines | -- | -- |
| DHL | 27 | 0.21 |
| Lufthansa German Airlines | 22 | 0.23 |
| American Eagle | 29 | 1.00 |
| Federal Express | 180 | 0.24 |
| Atlas Air | 12 | 0.17 |
| Japan Air Lines | 27 | 0.20 |
| Korean Air | 45 | 0.15 |
| Mexicana | 17 | 0.15 |
| Nippon Cargo Airlines | 5 | 0.51 |
| Spirit Airlines | 10 | 0.54 |
| Northwest Airlines | 63 | 0.23 |
| Ryan International | 53 | 0.19 |
| Polar Air Cargo | 26 | 0.52 |
| Scandinavian Airlines | 1 | 0.05 |
| United Airlines | 73 | 1.01 |
| UPS | 47 | 0.13 |
| USAirways | 1 | 0.06 |
| Overall | 897 | 0.33 |



Chicago O'Hare International Airport Preferential Flight Track Summary Runway 32L Departures

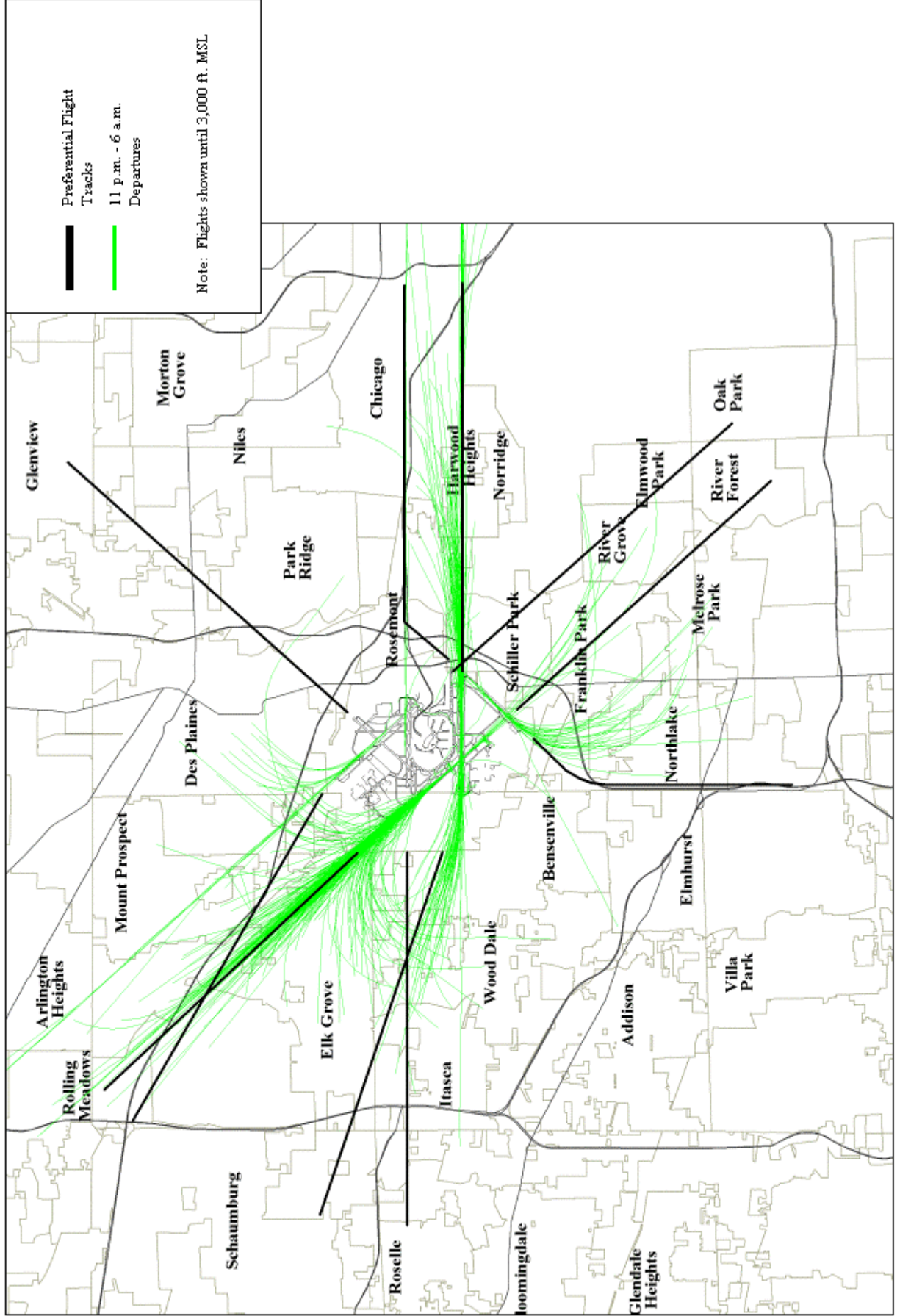
Period: 4th Quarter 2003



Fly Quiet Mode Hours: In 4Q 2003, 77.4% of departures were within 1/2 nautical mile and 84.9% were within 1 nautical mile of the preferred flight track.
In 4Q 2002, 75.1% of departures were within 1/2 nautical mile and 81.3% were within 1 nautical mile of the preferred flight track.

Chicago O'Hare International Airport
Period: 4th Quarter 2003

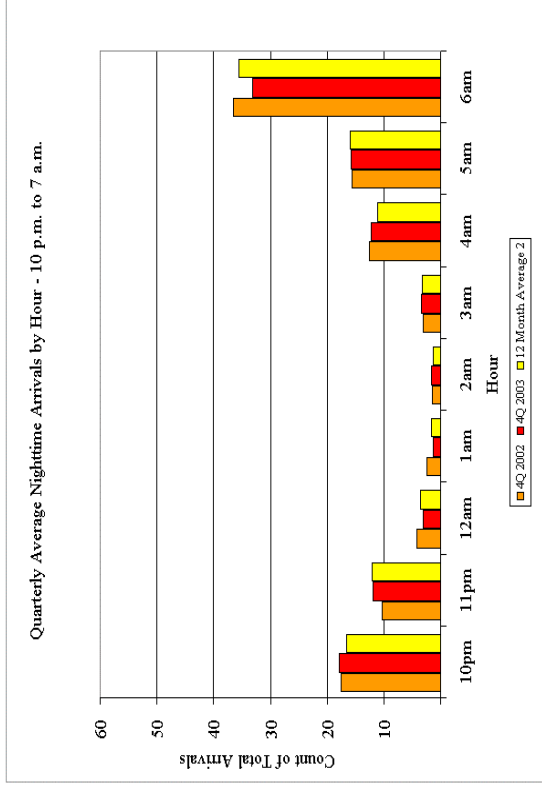
Nighttime Preferential Flight Track Compliance (11 p.m. - 6 a.m.)



Quarterly Nighttime Operations by Hour

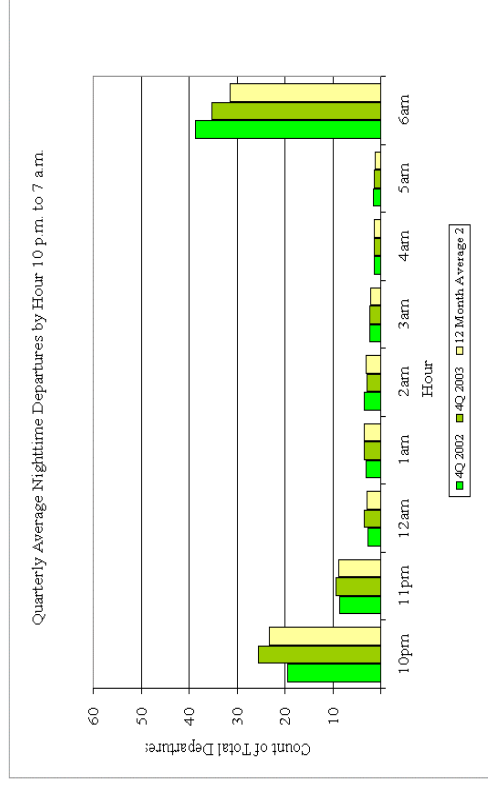
Arrivals

| Quarter | Quarterly Average Nighttime Arrivals by Hour - 10 p.m. to 7 a.m. | | | | | | | | | | | Total * | Stage 3 Jets |
|-------------------------------|--|------|------|-----|-----|-----|-----|-----|-----|-----|------|---------|--------------|
| | 10pm | 11pm | 12am | 1am | 2am | 3am | 4am | 5am | 6am | | | | |
| 4Q 2002 | 17 | 10 | 4 | 2 | 1 | 3 | 13 | 16 | 36 | 103 | 100% | | |
| 1Q 2003 | 15 | 11 | 4 | 2 | 1 | 3 | 11 | 13 | 31 | 91 | 100% | | |
| 2Q 2003 | 16 | 11 | 3 | 2 | 1 | 3 | 11 | 17 | 40 | 104 | 100% | | |
| 3Q 2003 | 17 | 14 | 4 | 2 | 1 | 3 | 10 | 18 | 39 | 109 | 100% | | |
| 4Q 2003 | 18 | 12 | 3 | 1 | 2 | 3 | 12 | 16 | 33 | 100 | 100% | | |
| 12 Month Average ² | 17 | 12 | 3 | 2 | 1 | 3 | 11 | 16 | 36 | 101 | 100% | | |



Departures

| Quarter | Quarterly Average Nighttime Departures by Hour - 10 p.m. to 7 a.m. | | | | | | | | | | | Total * | Stage 3 Jets |
|-------------------------------|--|------|------|-----|-----|-----|-----|-----|-----|----|------|---------|--------------|
| | 10pm | 11pm | 12am | 1am | 2am | 3am | 4am | 5am | 6am | | | | |
| 4Q 2002 | 20 | 9 | 3 | 3 | 3 | 2 | 1 | 2 | 39 | 81 | 100% | | |
| 1Q 2003 | 20 | 8 | 3 | 3 | 3 | 2 | 1 | 2 | 31 | 72 | 100% | | |
| 2Q 2003 | 21 | 8 | 2 | 3 | 3 | 2 | 1 | 1 | 29 | 72 | 100% | | |
| 3Q 2003 | 26 | 10 | 3 | 4 | 3 | 2 | 1 | 1 | 29 | 79 | 100% | | |
| 4Q 2003 | 26 | 9 | 3 | 3 | 3 | 2 | 1 | 1 | 35 | 85 | 100% | | |
| 12 Month Average ² | 23 | 9 | 3 | 3 | 3 | 2 | 1 | 1 | 31 | 77 | 100% | | |



1. Data Represents Total Operations Per Quarter as measured by Airport Noise Monitoring System

2. 12 Month Average equals the average of 1Q 2003, 2Q 2003, 3Q 2003, and 4Q 2003.

* Total may not add due to rounding.

Source: Chicago Airport Noise Monitoring System



Chicago O'Hare International Airport
 Period: 4th Quarter 2003

Quarterly Nighttime Noise Complaints (10 p.m. to 7 a.m.)

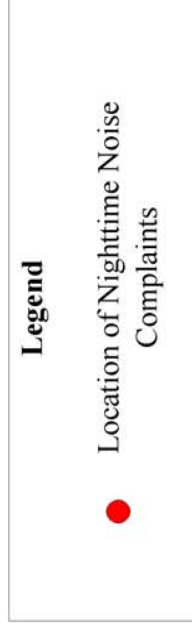
| Community | # of Complaints | | | Percentage of Complaints | | | # of Callers | | | Percentage of Callers | | |
|-------------------|------------------|------------------|-----------------|--------------------------|------------------|-----------------|------------------|------------------|-----------------|-----------------------|------------------|-----------------|
| | 4th Quarter 2003 | 4th Quarter 2002 | 12 Month Avg. 1 | 4th Quarter 2003 | 4th Quarter 2002 | 12 Month Avg. 1 | 4th Quarter 2003 | 4th Quarter 2002 | 12 Month Avg. 1 | 4th Quarter 2003 | 4th Quarter 2002 | 12 Month Avg. 1 |
| Arlington Heights | 13 | 10 | 9 | 3% | 1% | 2% | 6 | 9 | 5 | 4% | 3% | 3% |
| Bensenville | 6 | 9 | 7 | 2% | 1% | 2% | 4 | 6 | 4 | 3% | 2% | 2% |
| Bloomingtondale | 0 | 0 | 0 | 0% | 0% | 0% | 0 | 0 | 0 | 0% | 0% | 0% |
| Carol Stream | 0 | 0 | 0 | 0% | 0% | 0% | 0 | 0 | 0 | 0% | 0% | 0% |
| Chicago | 43 | 59 | 43 | 11% | 3% | 11% | 21 | 24 | 20 | 16% | 8% | 12% |
| Des Plaines | 21 | 38 | 26 | 5% | 2% | 7% | 13 | 19 | 14 | 10% | 6% | 8% |
| Downers Grove | 4 | 0 | 1 | 1% | 0% | 0% | 1 | 0 | 0 | 1% | 0% | 0% |
| Elk Grove Village | 22 | 43 | 24 | 6% | 2% | 6% | 14 | 23 | 13 | 10% | 7% | 8% |
| Elmhurst | 2 | 86 | 9 | 1% | 0% | 2% | 2 | 30 | 7 | 1% | 10% | 4% |
| Elmwood Park | 11 | 0 | 3 | 3% | 0% | 0% | 1 | 0 | 1 | 1% | 0% | 0% |
| Franklin Park | 15 | 38 | 27 | 4% | 1% | 7% | 10 | 24 | 14 | 7% | 8% | 8% |
| Gary, IN | 20 | 21 | 15 | 5% | 0% | 4% | 2 | 5 | 1 | 1% | 2% | 1% |
| Glenview | 1 | 1 | 2 | 0% | 0% | 0% | 1 | 1 | 1 | 1% | 0% | 1% |
| Harwood Heights | 107 | 85 | 92 | 28% | 2% | 24% | 11 | 28 | 18 | 8% | 9% | 11% |
| Hillside | 22 | 7 | 12 | 6% | 0% | 3% | 2 | 2 | 2 | 1% | 1% | 1% |
| Hinsdale | 0 | 0 | 0 | 0% | 0% | 0% | 0 | 0 | 0 | 0% | 0% | 0% |
| Hoffman Estates | 0 | 0 | 0 | 0% | 0% | 0% | 0 | 0 | 0 | 0% | 0% | 0% |
| Inverness | 0 | 0 | 0 | 0% | 0% | 0% | 0 | 0 | 0 | 0% | 0% | 0% |
| Itasca | 0 | 18 | 4 | 0% | 0% | 1% | 0 | 10 | 2 | 0% | 3% | 1% |
| Lake Zurich | 1 | 2 | 1 | 0% | 0% | 0% | 1 | 1 | 1 | 1% | 0% | 0% |
| Lombard | 1 | 8 | 4 | 0% | 0% | 1% | 1 | 5 | 3 | 1% | 2% | 2% |
| Medinah | 0 | 12 | 3 | 0% | 0% | 1% | 0 | 7 | 2 | 0% | 2% | 1% |
| Melrose Park | 11 | 5 | 12 | 3% | 1% | 3% | 7 | 3 | 6 | 5% | 1% | 3% |
| Mount Prospect | 0 | 2 | 1 | 0% | 0% | 0% | 0 | 2 | 1 | 0% | 1% | 0% |
| Niles | 0 | 3 | 1 | 0% | 0% | 0% | 0 | 3 | 1 | 0% | 1% | 1% |
| Norridge | 5 | 45 | 7 | 1% | 0% | 2% | 2 | 20 | 4 | 1% | 6% | 2% |
| Northlake | 0 | 9 | 1 | 0% | 0% | 0% | 0 | 4 | 1 | 0% | 1% | 0% |
| Oak Park | 1 | 6 | 5 | 0% | 0% | 1% | 1 | 4 | 4 | 1% | 1% | 2% |
| Palatine | 1 | 6 | 2 | 0% | 0% | 1% | 1 | 5 | 2 | 1% | 2% | 1% |
| Park Ridge | 36 | 69 | 27 | 9% | 2% | 7% | 12 | 28 | 14 | 9% | 9% | 9% |
| River Forest | 0 | 4 | 1 | 0% | 0% | 0% | 0 | 3 | 1 | 0% | 1% | 0% |
| River Grove | 0 | 1 | 1 | 0% | 0% | 0% | 0 | 1 | 1 | 0% | 0% | 0% |
| Rolling Meadows | 7 | 9 | 6 | 2% | 0% | 1% | 2 | 6 | 4 | 1% | 2% | 2% |
| Roselle | 4 | 8 | 6 | 1% | 0% | 1% | 3 | 6 | 3 | 2% | 2% | 2% |
| Rosemont | 0 | 1 | 0 | 0% | 0% | 0% | 0 | 1 | 0 | 0% | 0% | 0% |
| Schaumburg | 1 | 0 | 1 | 0% | 0% | 0% | 1 | 0 | 1 | 1% | 0% | 0% |
| Schiller Park | 5 | 13 | 8 | 1% | 0% | 2% | 3 | 6 | 4 | 2% | 2% | 3% |
| Wood Dale | 7 | 39 | 15 | 2% | 0% | 4% | 2 | 9 | 7 | 1% | 3% | 4% |
| Other | 15 | 20 | 17 | 4% | 1% | 4% | 10 | 13 | 10 | 7% | 4% | 6% |
| Total | 382 | 677 | 389 | 100% | 100% | 20% | 134 | 308 | 167 | 100% | 100% | 100% |

1. 12 Month Average equals average of 10, 2003; 20, 2003; 30, 2003 and 40, 2003.
 Source: Chicago Airport Noise Monitoring System

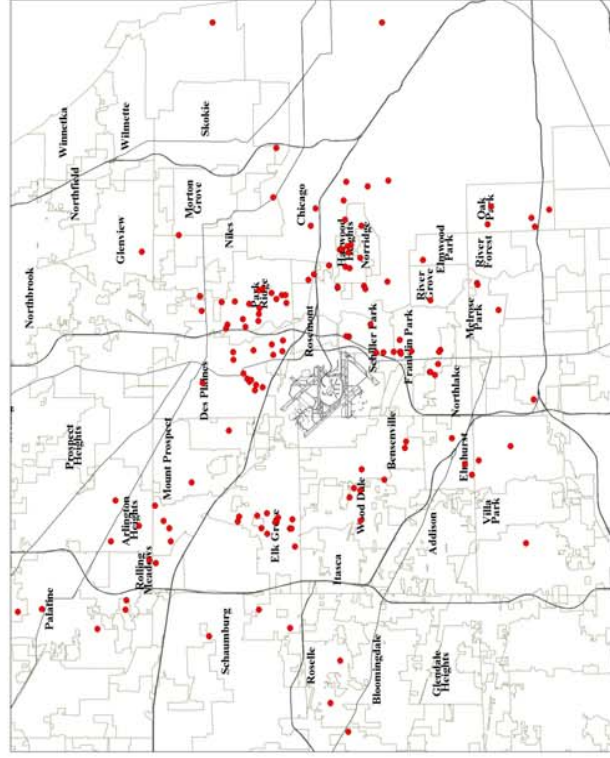
**Chicago O'Hare International Airport
 Period: 4th Quarter 2003**



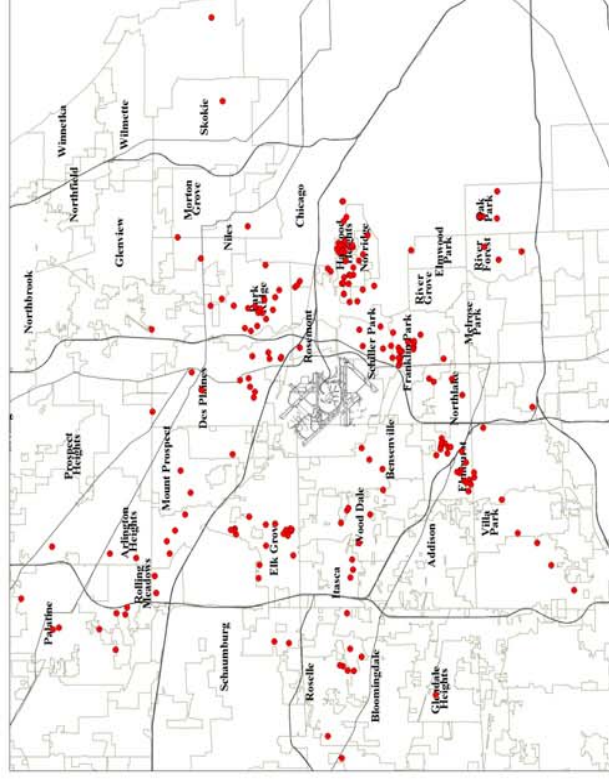
Quarterly Nighttime Noise Complaint Locations (10 p.m. to 7 a.m.)



4th Quarter 2003 Nighttime Complaint Locations:



4th Quarter 2002 Nighttime Complaint Locations:



Note: Not all callers are located due to lack of address information or are located outside the extent of the map.



Quarterly Nighttime Noise Complaint Locations (10 p.m. to 7 a.m.)

| Noise Monitor | Community | 4th Quarter 2003 | | 4th Quarter 2002 | | 12 Month Average | |
|---------------|-------------------|---------------------------|----------------------------|---------------------------|----------------------------|---------------------------|----------------------------|
| | | Aircraft Leq ¹ | Community Leq ¹ | Aircraft Leq ¹ | Community Leq ¹ | Aircraft Leq ¹ | Community Leq ¹ |
| 1 | Arlington Heights | 53.5 | 55.8 | 53.7 | 55.9 | 53.0 | 54.4 |
| 2 | Melrose Park | 47.3 | 54.1 | 47.6 | 54.3 | 47.7 | 54.4 |
| 3 | Bensenville | 51.4 | 58.4 | 51.1 | 58.0 | 50.9 | 57.9 |
| 4 | Schiller Park | 49.3 | 56.5 | 48.9 | 56.7 | 49.0 | 56.0 |
| 5 | Chicago | 48.8 | 54.1 | 47.3 | 53.7 | 48.3 | 54.6 |
| 6 | Chicago | 46.9 | 51.7 | 46.9 | 51.3 | 46.9 | 51.5 |
| 7 | Des Plaines | 49.1 | 54.6 | 47.4 | 54.4 | 48.4 | 54.3 |
| 8 | Des Plaines | 50.5 | 56.4 | 51.7 | 56.5 | 51.5 | 56.2 |
| 9 | Des Plaines | 55.4 | 59.5 | 55.3 | 59.8 | 57.2 | 64.0 |
| 10 | Rolling Meadows | 53.0 | 56.5 | 52.3 | 55.8 | 52.2 | 55.4 |
| 11 | Chicago | 47.6 | 52.7 | 47.7 | 52.5 | 47.8 | 53.7 |
| 12 | Elk Grove | 49.6 | 57.1 | 52.3 | 53.8 | 63.8 | 71.1 |
| 13 | Elk Grove | 66.3 | 67.5 | 67.0 | 68.1 | 66.5 | 65.9 |
| 14 | Elk Grove | 56.2 | 57.6 | 57.1 | 58.3 | 56.6 | 56.4 |
| 15 | Franklin Park | 49.2 | 55.3 | 49.1 | 55.4 | 48.6 | 55.2 |
| 16 | Franklin Park | 59.8 | 66.9 | 60.1 | 66.6 | 59.2 | 66.0 |
| 17 | Harwood Heights | 59.2 | 60.5 | 59.2 | 60.3 | 58.3 | 58.2 |
| 19 | Stone Park | 53.6 | 65.5 | 49.9 | 56.7 | 50.2 | 60.7 |
| 20 | Mount Prospect | 52.6 | 55.0 | 52.5 | 54.4 | 52.3 | 54.0 |
| 21 | Mount Prospect | 46.5 | 50.1 | 46.7 | 49.6 | 47.1 | 50.6 |
| 22 | Norridge | 60.9 | 62.2 | 61.0 | 61.7 | 60.1 | 59.5 |
| 23 | Northlake | 54.8 | 58.8 | 55.4 | 58.4 | 54.4 | 57.3 |
| 24 | Park Ridge | 44.5 | 51.0 | 44.6 | 50.6 | 45.3 | 52.2 |
| 25 | Park Ridge | 48.7 | 55.0 | 49.3 | 54.5 | 48.7 | 54.0 |
| 26 | Park Ridge | 43.7 | 50.3 | 43.5 | 50.5 | 45.2 | 50.7 |
| 27 | Rosemont | 54.1 | 61.3 | 54.5 | 61.6 | 55.0 | 61.2 |
| 28 | Schiller Park | 71.6 | 72.6 | 71.2 | 72.2 | 70.7 | 70.2 |
| 32 | Wood Dale | 57.7 | 61.1 | 55.7 | 57.6 | 56.3 | 60.3 |
| 34 | Elk Grove | 49.8 | 52.9 | 50.5 | 53.2 | 52.4 | 57.6 |
| 35 | Unincorp. Cook | 51.9 | 55.7 | 52.6 | 56.5 | 50.1 | 54.6 |
| 37 | Mount Prospect | 45.0 | 50.1 | 44.7 | 50.0 | 44.8 | 58.7 |

1. Leq (Equivalent Sound Level): The average sound energy level during a stated period of time.

Red represents an increase of 1 dB or more from same quarter previous year (5 monitors). Green represents a decrease of 1dB or more from same quarter previous year (2 monitors).

Source: Chicago Airport Noise Monitoring System