

***Fly Quiet Adherence Report
1st Quarter 2004***

Chicago O'Hare International Airport



City of Chicago Department of Aviation

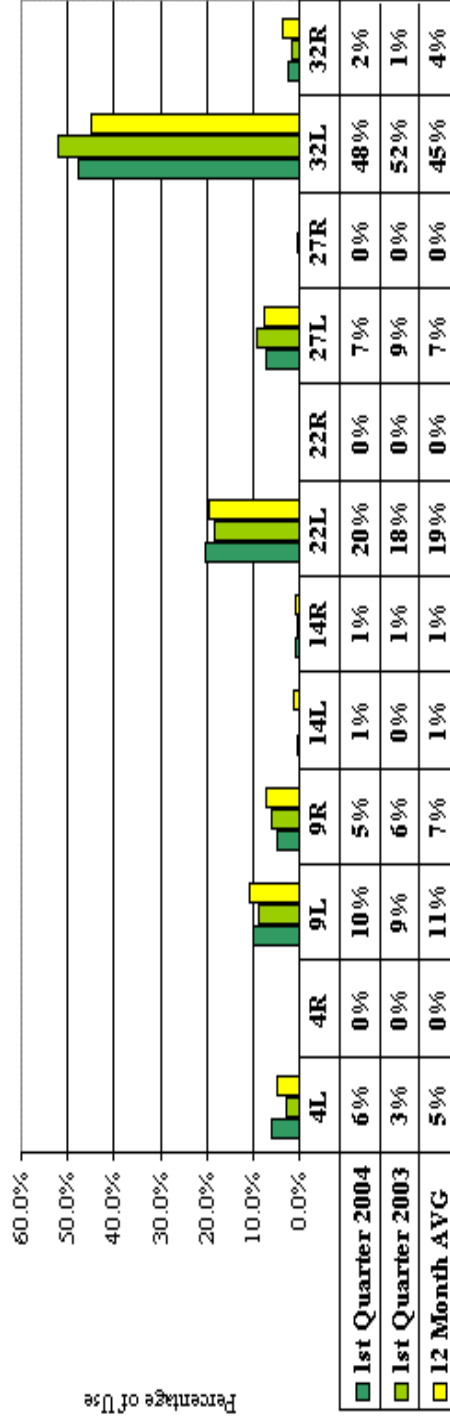
*Visit the Community Resource Center on the Internet at
<http://www.chicagoairports.com>*

Chicago O'Hare International Airport
 Period: 1st Quarter 2004



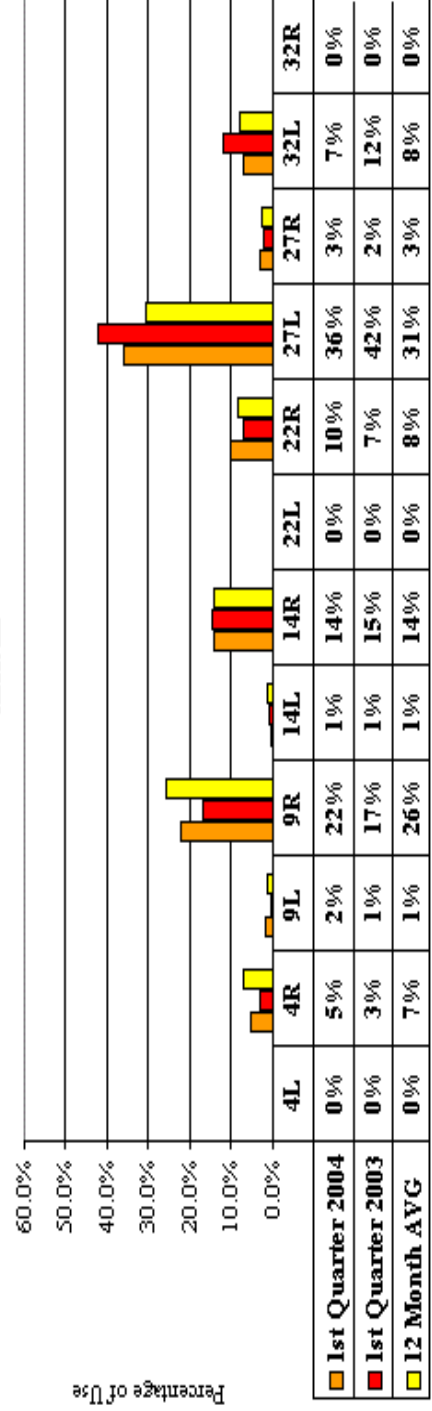
Quarterly Nighttime Runway Use (10 p.m. to 7 a.m.)

Departures



Runway

Arrivals



Runway

Chicago O'Hare International Airport Period: 2nd Quarter 2003

Quarterly Aircraft Ground Run-ups



All Airlines - Run-ups

Location	2nd Quarter 2004		2nd Quarter 2003		12 Month Avg. ¹	
	Run-ups	Percentage	Run-ups	Percentage	Run-ups	Percentage
GRE	100	65%	144	66%	140	73%
9R Hold Pad	51	33%	70	32%	50	26%
32L Hold Pad	3	2%	5	2%	2	1%
Total	154	100%	219	100%	192	100%

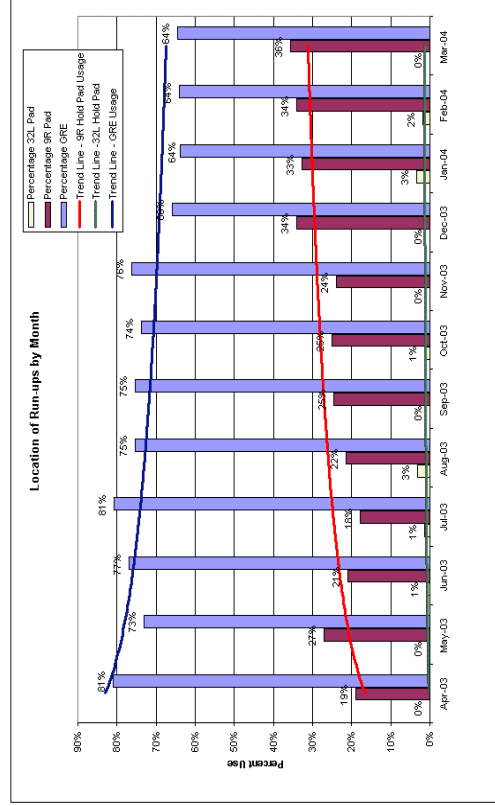
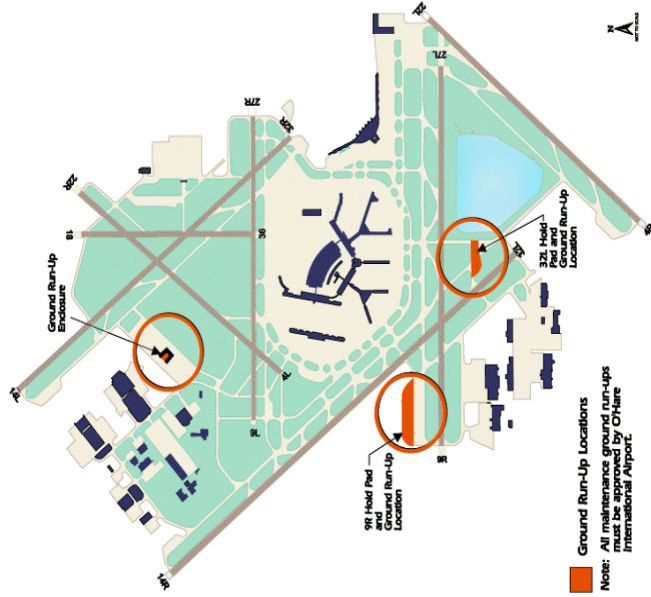
Location	2nd Quarter 2004		2nd Quarter 2003		12 Month Avg. ¹	
	Run-ups	Percentage	Run-ups	Percentage	Run-ups	Percentage
GRE	40	80%	72	82%	59	86%
9R Hold Pad	10	20%	14	16%	10	14%
32L Hold Pad	0	0%	2	2%	0	0%
Total	50	100%	88	100%	69	100%

Location	2nd Quarter 2004		2nd Quarter 2003		12 Month Avg. ¹	
	Run-ups	Percentage	Run-ups	Percentage	Run-ups	Percentage
GRE	19	95%	20	95%	21	100%
9R Hold Pad	1	5%	1	5%	0	0%
32L Hold Pad	0	0%	0	0%	0	0%
Total	20	100%	21	100%	21	100%

Location	2nd Quarter 2004		2nd Quarter 2003		12 Month Avg. ¹	
	Run-ups	Percentage	Run-ups	Percentage	Run-ups	Percentage
GRE	17	40%	20	44%	32	58%
9R Hold Pad	23	55%	24	53%	22	40%
32L Hold Pad	2	5%	1	2%	1	2%
Total	42	100%	45	100%	55	100%

Location	2nd Quarter 2004		2nd Quarter 2003		12 Month Avg. ¹	
	Run-ups	Percentage	Run-ups	Percentage	Run-ups	Percentage
GRE	17	55%	24	50%	21	58%
9R Hold Pad	14	45%	23	48%	15	42%
32L Hold Pad	0	0%	1	2%	0	0%
Total	31	100%	48	100%	36	100%

Location	2nd Quarter 2004		2nd Quarter 2003		12 Month Avg. ¹	
	Run-ups	Percentage	Run-ups	Percentage	Run-ups	Percentage
GRE	7	64%	8	47%	8	80%
9R Hold Pad	3	27%	8	47%	2	20%
32L Hold Pad	1	9%	1	6%	0	0%
Total	11	100%	17	100%	10	100%



1. 12 Month Average equals the average of 2Q 2003, 3Q 2003, 4Q 2003 and 1Q 2004.

Source: Chicago Department of Aviation, Ground Run-up Logs

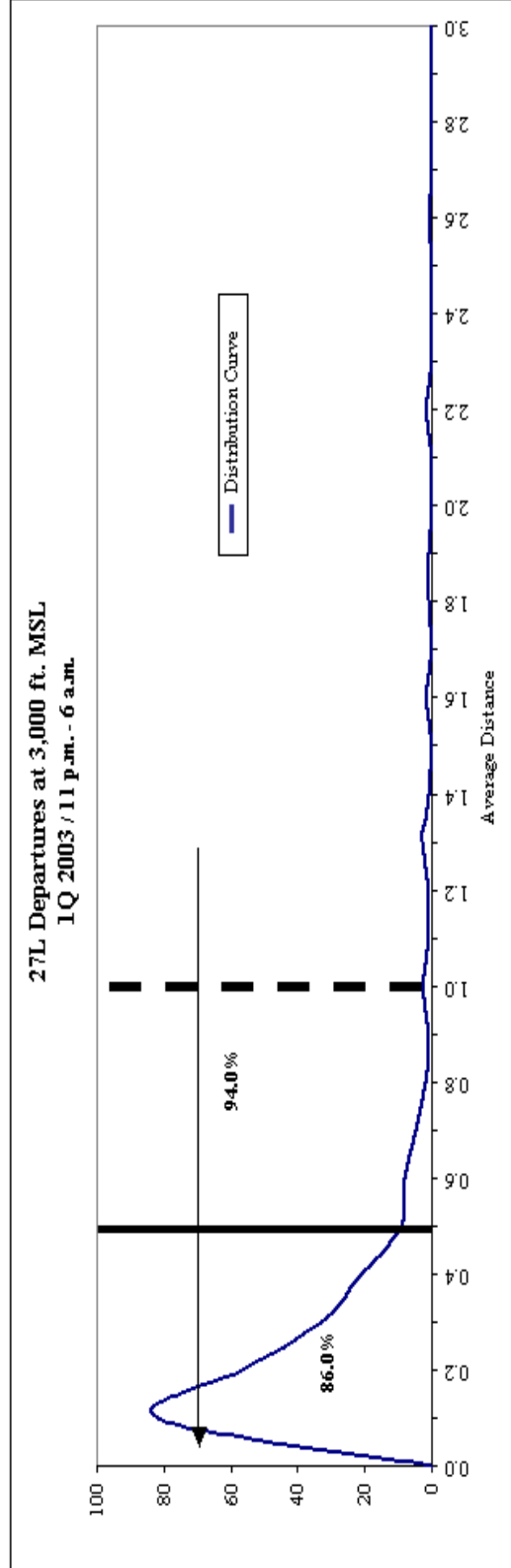
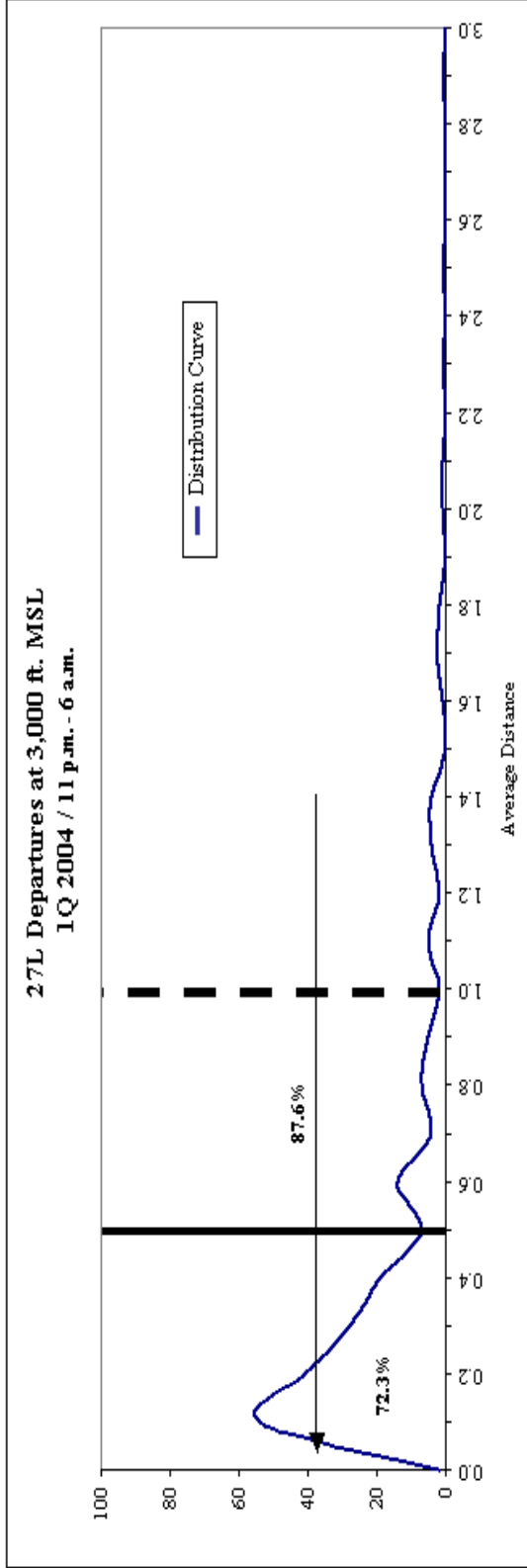
Chicago O'Hare International Airport
 Period: 1st Quarter 2004

Preferential Flight Track Summary
 Runway 27L Departures



Airline	1st Quarter 2004 11 p.m. - 6 a.m.		1st Quarter 2003 11 p.m. - 6 a.m.	
	Departures	Average Distance	Departures	Average Distance
American Airlines	12	0.90	9	0.71
Asiana Airlines	2	0.56	2	0.02
Airborne Express	7	0.19	11	0.35
Air France	7	0.27	5	0.22
Mesa Airlines	1	0.33	--	--
America West Airlines	1	0.16	2	0.16
United Express	1	2.01	--	--
United Express	10	0.29	5	0.17
China Airlines	--	--	2	0.24
Air China	4	0.22	1	0.54
China Cargo Airlines	1	0.17	--	--
Continental Airlines	--	0.00	--	--
Cathay Pacific	6	0.29	2	0.21
Delta Air Lines	--	--	--	--
DHL	1	0.32	2	0.07
Lufthansa German Airlines	--	--	1	0.15
American Eagle	3	1.36	2	0.08
Federal Express	20	0.34	19	0.27
Japan Air Lines	2	0.34	1	0.29
Korean Air	7	0.19	9	0.16
Trans States Airlines	--	--	--	--
Mexicana	50	0.38	55	0.26
Nippon Cargo Airlines	3	0.41	--	--
Northwest Airlines	2	0.90	--	--
Spirit Airlines	9	0.40	4	0.31
Polar Air Cargo	17	0.21	31	0.22
Ryan Aviation Corporation	9	0.38	9	0.70
Scandinavian Airlines	1	0.21	--	--
United Airlines	10	0.74	2	0.06
UPS	10	0.72	10	0.31
USAirways	--	--	--	--
Overall	196	0.47	184	0.26

Preferential Flight Track Summary Runway 27L Departures



Nighttime Hours 11 p.m. to 6 a.m.: In 1Q 2004, 72.3% of departures were within 1/2 nautical mile and 87.6% were within 1 nautical mile of the preferred flight track.
In 1Q 2003, 86.0% of departures were within 1/2 nautical mile and 94.0% were within 1 nautical mile of the preferred flight track.

Chicago O'Hare International Airport
 Period: 1st Quarter 2004

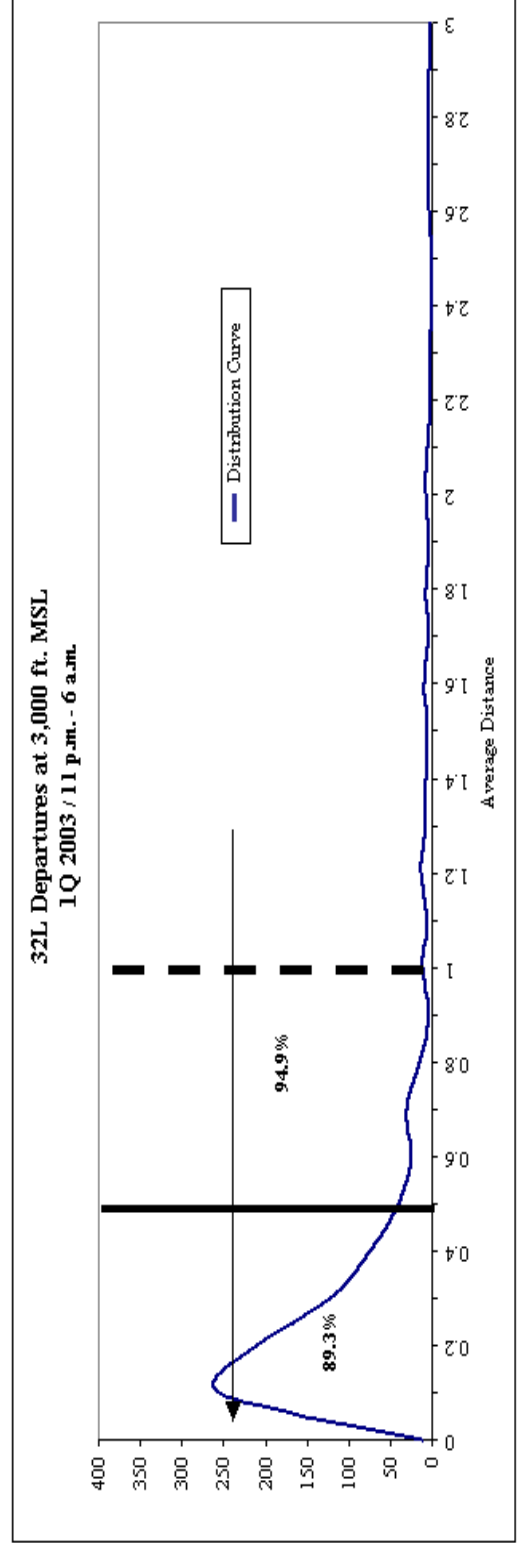
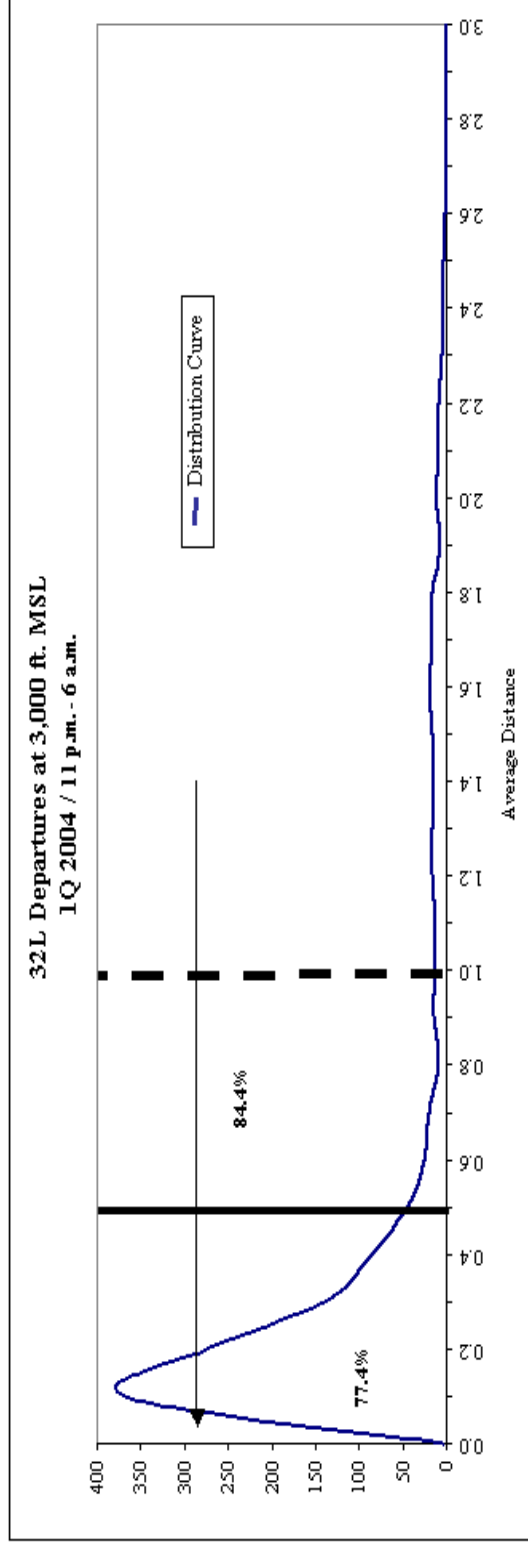
Preferential Flight Track Summary
 Runway 32L Departures



Airline	1st Quarter 2004	
	Departures	Average Distance 11 p.m. - 6 a.m.
American Airlines	161	0.81
Asiana Airlines	11	0.18
Airborne Express	43	0.27
Air France	28	0.38
Mesa Airlines	5	0.30
America West Airlines	6	0.46
United Express	63	0.51
United Express	101	0.51
China Airlines	6	0.07
Air China	16	0.24
China Cargo Airlines	5	0.11
Continental Airlines	3	0.25
Cathay Pacific	24	0.32
Delta Air Lines	--	--
DHL	26	0.26
Lufthansa German Airlines	16	0.20
American Eagle	34	1.06
Federal Express	160	0.33
Japan Air Lines	19	0.14
Korean Air	32	0.17
Trans States Airlines	3	0.82
Mexicana	24	0.16
Nippon Cargo Airlines	22	0.16
Northwest Airlines	30	0.37
Spirit Airlines	39	0.19
Polar Air Cargo	43	0.16
Ryan Aviation Corporation	33	0.19
Scandinavian Airlines	4	0.13
United Airlines	113	0.74
UPS	54	0.21
USAirways	--	--
Overall	1124	0.33

Airline	1st Quarter 2003	
	Departures	Average Distance 11 p.m. - 6 a.m.
American Airlines	60	0.46
Asiana Airlines	8	0.10
Airborne Express	27	0.21
Air France	37	0.34
Mesa Airlines	7	0.00
America West Airlines	1	0.26
United Express	1	0.16
United Express	43	0.21
China Airlines	1	0.28
Air China	9	0.17
China Cargo Airlines	--	--
Continental Airlines	7	0.11
Cathay Pacific	33	0.35
Delta Air Lines	1	0.09
DHL	25	0.19
Lufthansa German Airlines	24	0.19
American Eagle	27	0.43
Federal Express	179	0.29
Japan Air Lines	20	0.16
Korean Air	41	0.13
Trans States Airlines	--	--
Mexicana	19	0.29
Nippon Cargo Airlines	7	0.16
Northwest Airlines	9	0.26
Spirit Airlines	47	0.20
Polar Air Cargo	38	0.15
Ryan Aviation Corporation	37	0.21
Scandinavian Airlines	2	1.23
United Airlines	36	0.49
UPS	56	0.15
USAirways	3	0.30
Overall	804	0.26

Preferential Flight Track Summary
 Runway 32L Departures



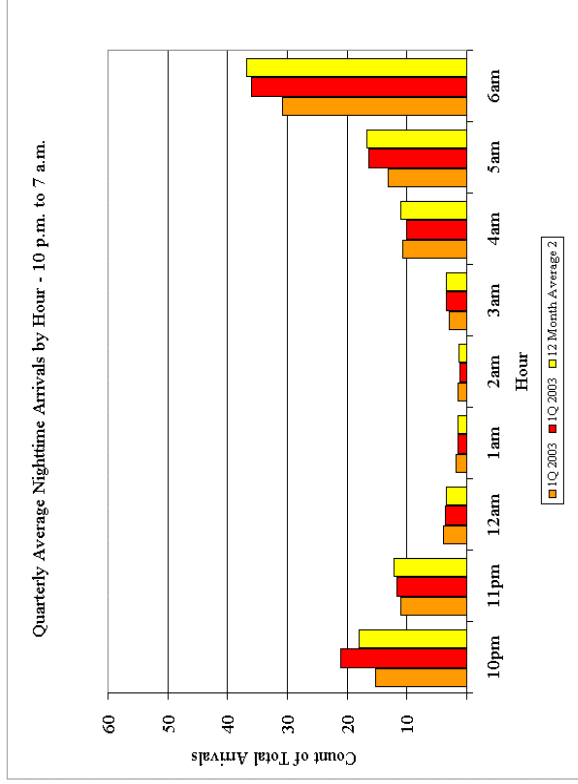
Nighttime Hours 11 p.m. to 6 a.m.: In 1Q 2004, 77.4% of departures were within 1/2 nautical mile and 84.4% were within 1 nautical mile of the preferred flight track.
 In 1Q 2003, 89.3% of departures were within 1/2 nautical mile and 94.9% were within 1 nautical mile of the preferred flight track.



Quarterly Nighttime Operations by Hour

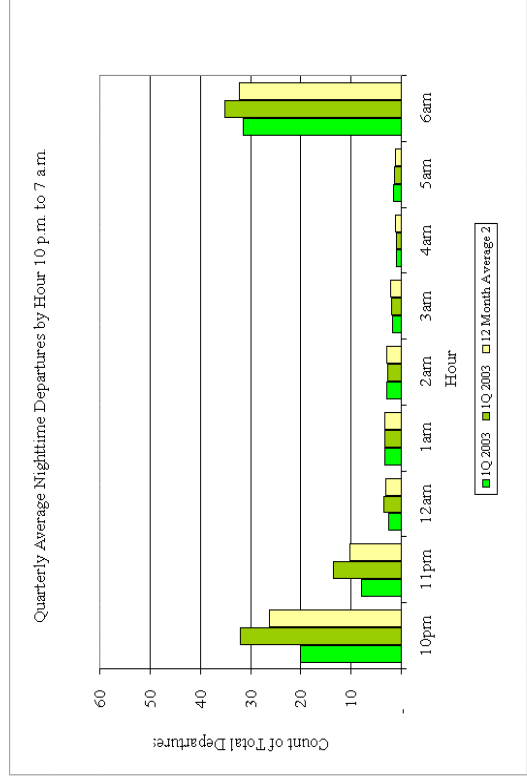
Arrivals

Quarter	Quarterly Average Nighttime Arrivals by Hour - 10 p.m. to 7 a.m.											Total *	Stage 3 Jets
	10pm	11pm	12am	1am	2am	3am	4am	5am	6am				
1Q 2003	15	11	4	2	1	3	11	13	31	91	100%		
2Q 2003	16	11	3	2	1	3	11	17	40	104	100%		
3Q 2003	17	14	4	2	1	3	10	18	39	109	100%		
4Q 2003	18	12	3	1	2	3	12	16	33	99	100%		
1Q 2003	21	12	4	1	1	3	10	16	36	105	100%		
12 Month Average²	18	12	3	2	1	3	11	17	37	104	100%		



Departures

Quarter	Quarterly Average Nighttime Departures by Hour - 10 p.m. to 7 a.m.											Total *	Stage 3 Jets
	10pm	11pm	12am	1am	2am	3am	4am	5am	6am				
1Q 2003	20	8	3	3	2	1	2	1	2	31	72	100%	
2Q 2003	21	8	2	3	3	2	1	1	29	72	100%		
3Q 2003	26	10	3	4	3	2	1	1	29	79	100%		
4Q 2003	26	9	3	3	3	2	1	1	35	85	100%		
1Q 2003	32	14	3	3	3	2	1	1	35	94	100%		
12 Month Average²	26	10	3	3	3	2	1	1	32	83	100%		



1. Data Represents Total Operations Per Quarter as measured by Airport Noise Monitoring System

2. 12 Month Average equals the average of 2Q 2003, 3Q 2003, 4Q 2003 and 1Q 2004.

* Total may not add due to rounding.

Source: Chicago Airport Noise Monitoring System



Quarterly Nighttime Noise Complaints (10 p.m. to 7 a.m.)

Community	# of Complaints			Percentage of Complaints			# of Callers			Percentage of Callers		
	1st Quarter 2004	1st Quarter 2003	12 Month Avg. ²	1st Quarter 2004	1st Quarter 2003	12 Month Avg. ²	1st Quarter 2004	1st Quarter 2003	12 Month Avg. ²	1st Quarter 2004	1st Quarter 2003	12 Month Avg. ²
Arlington Heights	3	3	9	1%	2%	2%	3	2	6	3%	3%	3%
Bensenville	4	1	7	2%	2%	2%	3	1	5	3%	1%	3%
Bloomington	0	0	0	0%	0%	0%	0	0	0	0%	0%	0%
Carol Stream	0	0	0	0%	0%	0%	0	0	0	0%	0%	0%
Chicago	18	20	43	9%	8%	11%	13	7	21	14%	10%	12%
Des Plaines	17	11	27	8%	4%	7%	6	6	14	7%	9%	8%
Downers Grove	2	0	2	1%	1%	0%	2	0	1	2%	0%	0%
Elk Grove Village	18	11	26	9%	5%	7%	9	7	14	10%	10%	8%
Elmhurst	0	0	9	0%	0%	2%	0	0	7	0%	0%	4%
Elmwood Park	22	0	9	11%	1%	2%	1	0	1	1%	0%	0%
Franklin Park	8	8	27	4%	4%	7%	7	3	15	8%	4%	8%
Gary, IN	0	8	13	0%	0%	3%	0	1	1	0%	1%	1%
Glenview	0	2	1	0%	0%	0%	0	1	1	0%	1%	1%
Harwood Heights	56	51	93	27%	6%	23%	10	8	18	11%	12%	11%
Hillside	7	6	13	3%	1%	3%	2	1	2	2%	1%	1%
Hinsdale	0	0	0	0%	0%	0%	0	0	0	0%	0%	0%
Hoffman Estates	0	0	0	0%	0%	0%	0	0	0	0%	0%	0%
Inverness	0	0	0	0%	0%	0%	0	0	0	0%	0%	0%
Itasca	2	1	4	1%	1%	1%	2	1	2	2%	1%	1%
Lake Zurich	1	0	1	0%	1%	0%	1	0	1	1%	0%	0%
Lombard	0	1	4	0%	0%	1%	0	1	3	0%	1%	2%
Medinah	1	4	2	0%	1%	1%	1	3	1	1%	4%	1%
Melrose Park	15	3	15	7%	3%	4%	5	2	7	5%	3%	4%
Mount Prospect	0	0	1	0%	0%	0%	0	0	1	0%	0%	0%
Niles	2	0	2	1%	1%	0%	2	0	2	2%	0%	1%
Norridge	5	2	7	2%	2%	2%	4	2	4	4%	3%	2%
Northlake	0	1	1	0%	0%	0%	0	0	1	0%	0%	0%
Oak Park	0	1	5	0%	0%	1%	0	1	4	0%	1%	2%
Palatine	3	3	2	1%	2%	1%	3	3	2	3%	4%	1%
Park Ridge	3	5	27	1%	2%	7%	3	4	14	3%	6%	8%
River Forest	0	0	1	0%	0%	0%	0	0	1	0%	0%	0%
River Grove	0	1	0	0%	0%	0%	0	1	0	0%	1%	0%
Rolling Meadows	5	4	6	2%	1%	1%	2	3	3	2%	4%	2%
Roselle	0	2	5	0%	0%	1%	0	1	3	0%	1%	1%
Rosemont	0	0	0	0%	0%	0%	0	0	0	0%	0%	0%
Schaumburg	0	0	1	0%	0%	0%	0	0	0	0%	0%	0%
Schiller Park	1	8	6	0%	1%	2%	1	3	4	1%	4%	2%
Wood Dale	6	3	16	3%	4%	4%	6	2	8	7%	3%	5%
Other 1	9	10	16	4%	4%	4%	6	4	10	7%	6%	6%
Total	208	169	399	100%	100%	54%	92	68	173	100%	100%	100%

1. Other: Algonquin, Lombard, Norwood Park, Villa Park, Woodridge
 2. 12 Month Average equals average of 2Q 2002, 3Q 2002, 4Q 2002, and 1Q 2003.
 Source: Chicago Airport Noise Monitoring System



Quarterly Nighttime Permanent Noise Monitor Data (10 p.m. to 7 a.m.)

Noise Monitor	Community	1st Quarter 2004		1st Quarter 2003		12 Month Average	
		Aircraft Leq ¹	Community Leq ¹	Aircraft Leq ¹	Community Leq ¹	Aircraft Leq ¹	Community Leq ¹
1	Arlington Heights	52.0	55.1	52.2	50.5	53.0	55.1
2	Melrose Park	47.4	54.1	45.7	52.8	48.0	54.6
3	Bensenville	51.9	58.0	49.7	55.7	51.5	58.3
4	Schiller Park	48.7	56.4	49.3	55.2	48.8	56.3
5	Chicago	46.4	53.1	46.5	51.4	48.2	54.8
6	Chicago	45.8	51.1	45.0	48.8	47.1	51.9
7	Des Plaines	47.7	54.3	47.1	53.1	48.5	54.5
8	Des Plaines	51.2	56.5	50.0	54.3	51.8	56.6
9	Des Plaines	53.7	58.9	54.1	57.2	57.2	64.1
10	Rolling Meadows	50.6	55.2	51.1	52.4	52.1	55.9
11	Chicago	48.3	53.2	46.7	52.1	48.1	54.0
12	Elk Grove	53.0	60.0	51.5	47.8	64.5	75.8
13	Elk Grove	65.0	67.0	66.2	62.5	66.2	66.7
14	Elk Grove	55.2	57.0	55.5	51.4	56.5	57.2
15	Franklin Park	50.4	55.6	47.0	53.5	49.4	55.7
16	Franklin Park	59.0	67.0	58.7	65.7	59.3	66.3
17	Harwood Heights	57.7	59.5	57.6	53.4	58.3	59.2
19	Stone Park	49.5	56.7	47.4	55.6	50.5	60.8
20	Mount Prospect	51.9	54.4	51.9	49.8	52.3	54.7
21	Mount Prospect	45.8	50.0	45.9	46.9	47.1	51.1
22	Norridge	60.0	61.2	59.7	53.1	60.1	60.6
23	Northlake	54.3	58.6	53.5	55.6	54.6	58.0
24	Park Ridge	44.6	51.3	42.8	50.0	45.6	52.4
25	Park Ridge	47.7	53.8	46.1	52.0	48.9	54.3
26	Park Ridge	45.0	50.2	43.1	48.5	45.5	51.0
27	Rosemont	54.5	60.9	53.5	59.2	55.2	61.5
28	Schiller Park	71.4	72.3	70.8	65.8	70.9	71.4
32	Wood Dale	58.4	63.6	57.2	53.6	56.7	62.0
34	Elk Grove	48.8	52.4	49.5	48.7	52.3	57.8
35	Unincorp. Cook	51.7	56.1	48.4	52.7	50.8	55.4
37	Mount Prospect	44.0	49.6	44.0	48.6	44.8	58.7

1. Leq (Equivalent Sound Level): The average sound energy level during a stated period of time.
 Red represents an increase of 1 dB or more from same quarter previous year (13 monitors). Green represents a decrease of 1dB or more from same quarter previous year (1 monitors).
 Source: Chicago Airport Noise Monitoring System